



2014 NGS Grand Champion – Broadview Unity, Rob Beynon
2104 NGS Reserve Grand Champion – Broadview Umma, Rob Beynon



Guernsey News

December 2014

Guernsey News

December 2014

Canadian Fieldman: Rob Forster
Email: rforster@guernseycanada.ca
Phone: 905-648-9640

Canadian Guernsey Association
7660 Mill Rd. Guelph, ON, N1H 6J1
Phone: 519-836-2141, Fax: 519-763-6582
Email: info@guernseycanada.ca
Administrator: Jessie Weir

President's Report

As most of you know on Sept 2nd my barn burnt down. It was devastating to watch the barn that has housed our cattle for 3 generations burn to the ground. The days following were very difficult but we were very blessed to have so many friends supporting us. We managed to save our herd but we did have a few injuries and stress related problems throughout the herd. As devastating as that day was it could have been so much worse. Thank God no one was hurt. Our milking herd is only 5 miles up the road and the rest of the herd is across the road from my home farm. Our silos were saved so I am trucking feed to the cows every day and I only lost about a quarter of my hay and half my straw.

Now after 3 months we are into a routine but no 2 days are the same. Some days, time goes too fast and others it can't go fast enough. We are finally starting the process of rebuilding and are working our way through the red tape of government, insurance, contractors etc. Hopefully we will be into our new barn next spring. I would like to thank everyone for all the thoughts, prayers and help we have received. It has truly been overwhelming. We have felt the support of our Guernsey family from around the world and it is very much appreciated.

I am trying to keep up to date on the Guernsey news and I would to congratulate all the breeders that took animals to the shows this year especially to Frank and Debbie Gordon who brought heifers from New Brunswick to Ontario for the National Show before continuing on to Madison. A year I'm sure they will never forget.

As always please let Rob Forster know if you have any extra cattle to sell. They are in high demand and the waiting list is getting longer. Also the first bull in our new young sire syndicate program, Lindrian Grumpy Pilot, has been released. Contact your Semex rep for semen.

As this year draws to a close I would like to wish everyone a Merry Christmas and a Happy New Year. As they say in the movies, may the odds be ever in your favour.

Sincerely
Scott Gordon



Address Change :

**The new home for the
Association is:**

**7660 Mill Road, Guelph,
ON, N1H 6J1**

Picture
Contest



Please continue to forward your candid Guernsey pictures to the office. The winner of the picture contest will have their winning picture on the cover of the next Journal.

This year has been a banner year for the Guernsey breed! Our Canadian Guernseys have excelled in the show ring and sales ring during the year. The latest being the journey of Guernsey View WII's Amy owned by Cedar Ridge Farms of Keswick Ridge, NB. She was named Reserve Champion calf at the provincial all-breeds 4-H show. The judge (Don Dubois from Alta Genetics) was so impressed with the calf that he encouraged the Gordons to take her to World Dairy Expo. On her way to Expo, Frank and Debbie Gordon along with Amy (and 2 other calves) made a stop at the Canadian National Show to win the calf class and she was named Reserve Junior Champion. Amy then carried on to Madison, Wisconsin for World Dairy Expo. She placed third in the winter calf class and was consigned to the International Guernsey Classic Sale and proceeded to top the sale, selling for \$8000 to Ros-Sue-Kim Guernseys of Gackle, North Dakota. In all, Amy travelled 3450 kms to reach her final destination. Her new owners are extremely excited about their recent purchase and plan on growing their Guernsey herd with Amy as the foundation animal. Also, good luck to Aaron Henhoeffler who is the proud new owner of the other 2 animals that made the trip with Amy to the National Show.

The National Guernsey Show was truly national this year as for the first time we had a Frank and Debbie Gordon exhibit at the show. Our show numbers were down slightly but quality was forever present. The animals finishing at the top of their classes would provide stiff competition at any other show! Many thanks to Seth Johnson for judging, Marie McNabb for announcing, Jessie Weir for scorekeeping, Harry Emmott for his ringman duties, Penny Bartlett for helping with handing out ribbons, Frank Robinson for photographing class winners and portraits following the show and of course, our exhibitors. The show is not a success without the help and participation of many hands.

Once again, EastGen provided the Association with an opportunity to showcase a Semex sired daughter at the Outdoor Farm Show in Woodstock, ON. Thanks to Maplehurst Farm for helping promote the breed at this show and to Jim Biggar for the invitation. We are looking forward to promoting once again at the Canadian Dairy Expo in Stratford, ON in February.

The Canadian Guernsey Association was proud to announce the official release of our first syndicated bull. Lindrian Grumpy Pilot-ET took flight on November 1 with semen released to syndicate members from Canada and the U.S. Take a look at the flyer in this newsletter to appreciate what this bull has to offer! Contact your Semex representative to order.

Interest in the breed has been growing at an incredible rate. Take a look at the Canadian Guernsey Association, Guernsey Solutions and Global Guernsey Marketing facebook pages and see for yourself. The Global Guernsey Marketing page reaches almost 2400 people from over 40 countries!

As usual, demand for animals is high. Contact me if you have anything available.

From my family to yours, have a healthy and safe holiday season and of course Merry Christmas!

Rob Forster

Canadian Guernsey Fieldman
(905) 648-9640
rforster@guernseycanada.ca

Tattoo Letter for 2015 is C

Excellents January - November 2014

Excellents January - November 2014

GUCANF7868072	BROADVIEW TULIP 2	EX	92 2E	ROB BEYNON	ON
GUCANF9648349	BROADVIEW UNITY	EX	92 1E	ROB BEYNON	ON
GUCANF9594167	MAPLEHURST AARONS BIANCA	EX	91 2E	KEN D FORSTER	ON
GUCANF9648377	BROADVIEW WHISKEY	EX	91 1E	ROB BEYNON	ON
GUCANF7433743	MAPLEHURST BOLEROS GIGGLES	EX	90 3E	KEN D FORSTER	ON
GUCANF7776244	DON HAVEN WARDEN VENUS	EX	90 3E	JOHN W GORDON	ON
GUCANF9648347	BROADVIEW UMMA	EX	90 2E	ROB BEYNON	ON
GUCANF7433780	MAPLEHURST DECISION OPHELIA	EX	90 2E	KEN D FORSTER	ON
GUCANF7433738	MAPLEHURST BOLERO WHISKEY	EX	90 1E	KEN D FORSTER	ON
GUCANF9648349	BROADVIEW UNITY	EX	90 1E	ROB BEYNON	ON
GUCANF7433778	MAPLEHURST LOUIE FALLON	EX	90 1E	KEN D FORSTER	ON
GUCANF10941339	GUERNSEY VIEW SNOWBELLE WILLA	EX	90 1E	CEDAR RIDGE FARMS LTD	NB
GUCANF9594205	MAPLEHURST LES BETTE	EX	90 1E	KEN D FORSTER	ON
GUCANF9723850	LINDRIAN PAMPER BEAR ET 200	EX	90 1E	JOHN & LINDA TAMIS	BC
GUCANF10996370	COMFORT FARMS MEGAN	EX	90 1E	COMFORT FARMS LTD	ON

Very Good Two Year Olds November 2014

GUCANF11356175	MAPLEHURST JUDGEMENT GLORY	VG2	87	KEN D FORSTER	ON
GUCANF11553848	EBY MANOR D L INDY	VG2	87	EBY MANOR LTD	ON
GUCANF9989553	BROADVIEW ZOOBY	VG2	87	ROB BEYNON	ON
GUCANF11356177	MAPLEHURST CASPIAN AMOUR	VG2	87	KEN D FORSTER	ON
GUCANF11356180	MAPLEHURST PIES ROSALINGA	VG2	87	KEN D FORSTER	ON
GUCANF9594223	MAPLEHURST JUDGMENT ROSIE	VG2	87	KEN D FORSTER	ON
GUCANF11356179	MAPLEHURST JUDGMENT LAVISH	VG2	86	KEN D FORSTER	ON
GUCANF11356181	MAPLEHURST YB FAME	VG2	86	KEN D FORSTER	ON
GUCANF11356185	MAPLEHURST NITRO GLISSEN	VG2	86	KEN D FORSTER	ON
GUCANF11356191	MAPLEHURST PINTO WIWI	VG2	86	KEN D FORSTER	ON
GUCANF11259762	GUERNSEY VIEW UPTON'S ZENDA	VG2	86	ROBERT FORSTER	ON
GUCANF9989553	BROADVIEW ZOOBY	VG2	86	ROB BEYNON	ON
GUCANF11356193	MAPLEHURST LES MAYA	VG2	85	KEN D FORSTER	ON
GUCANF11553846	EBY MANOR PRADA PORCHA	VG2	85	EBY MANOR LTD	ON
GUCANF11009747	LINDRIAN GRUMPY PIPPY	VG2	85	JOHN & LINDA TAMIS	BC
GUCANF9989557	BROADVIEW APPLE	VG2	85	ROB BEYNON	ON
GUCANF9989558	BROADVIEW ACORN	VG2	85	ROB BEYNON	ON
GUCANF10996419	COMFORT FARMS ASTELL	VG2	85	COMFORT FARMS LTD	ON

Please contact Rob Forster with possible young sire pedigrees for consideration for the syndicate Young Sire Program.

Promotion Committee Report

Hi Folks,

Hope you all have your crops off and the cattle tucked cozy in the barns for winter.

The Facebook 'page' and 'group' are both doing well. The page having 546 "likes" from all over the world from Greece to Australia. Our group is doing well and has 68 members, of which most are members or family members to the association. If you are on Facebook and interested in Guernsey talk I suggest joining the "Global Guernsey Marketing" page. There is interest in the breed we just need the animals to fill the demand (which you all already know).

This year's fair experience was excellent for promoting the breed (at least at the fairs we were at). Fairs are where the

people get to meet and greet with the farmers and their cattle. It is a HUGE promotion as a whole for the dairy industry and we should always be striving to better our displays and keep the welcoming smiles on our faces. I find great encouragement when a person asked to pet the cows and overcome their fears because it's the first time they've ever done so. It is especially gratifying to have a city person say "wow! You must love your animals they are so well cared for" which I respond; I really do!

Merry Christmas!

Emilia (Amy) Lindsay

World Dairy Expo Guernsey Show Results



Grand Champion Female: Flambeau Manor RO Lauren-ET, Exhibited by Gary Van Doorn, Tony, Wis.

Reserve Grand Champion Female: Adams Creek MM Anisa-ET, Exhibited by Eli and Kendra Nicley, Lyn Tormoehlen and Brandon Potter, Lebanon, Ind.

Grand Champion Female of the Junior Show: Idle Gold Stud Humorous, Exhibited by Jillian K Jensen, Comstock, Wis.

Reserve Grand Champion Female of the Junior Show: Dix-Lee Kojack Fawn, Exhibited by Whitney Yerina, Phillipsburg, Mo.

Premier Breeder: Austin & Landen Knapp, Knapp's Guernseys, Epworth, Iowa

Premier Exhibitor: Austin & Landen Knapp, Knapp's Guernseys, Epworth, Iowa

Premier Sire: Millborne Tiller Fayes Flame-ET

ANNUAL MEETING

CANADIAN GUERNSEY ASSOCIATION
&
GUERNSEY CATTLE BREEDERS' OF ONTARIO

Invite you to attend our
ANNUAL MEETING

To be held on Thursday, April 2, 2015
10:30 a.m.

EastGen, Meeting Room, New Address 7660 Mill Road, Guelph, ON
Complimentary lunch 12:00 Noon

RSVP to: info@guernseycanada.ca or 519-836-2141

By: March 19, 2015

Amendments are due to the office by February 2, 2015





Taureaux Guernsey Bulls

Newly Proven Bulls by LPI		Top 5 LPI Bulls		Bulls with Biggest LPI Change		Sires of Top 25 LPI Bulls (Average LPI)	
Nouvellement Éprouvés selon IPV		5 Meilleurs selon l'IPV		Taureaux avec changement d'IPV important		Pères des 25 Meilleurs (Moyenne d'IPV)	
Milk / Lait (kg)		Fat / Gras (kg)		Protein / Protéine (kg)		Conformation	
5 CASPIAN	JONAH 978	1 LEWIS 2 DOUBLE L 3 BINGO 4 JORDAN 5 CASPIAN	+ 1241 + 1237 - 1089 - 1038 N 978	JUDGMENT -150 660	ENHANCER TILLER ROYAL OAK	20% 950 8% 778 8% 705	
1 LEWIS	+ 1107	1 BINGO	- 46	1 LEWIS	0 26	1 BILLY JO	0 12
2 ABRAHAM	+ 745	2 KRUNCH	0 36	2 BINGO	- 25	2 LEVI	- 11
3 BINGO	- 702	3 AARON	+ 35	3 CASPIAN	N 22	3 FAYETTE	0 10
4 CASPIAN	N 682	4 DOUBLE L	0 34	4 ABRAHAM	0 19	4 GARRETT	0 9
5 BANGER	- 679	5 LEWIS	0 32	5 JORDAN	0 16	4 MAGICMAN	0 9
				5 LANE	0 16		
				5 JB	- 16		

Vaches Guernsey Cows

Top 5 LPI Cows		Sires of Top 400 LPI Cows		Dams of Top 400 LPI Cows		New Top LPI Cows	
5 Meilleures Vaches selon l'IPV		Pères des 400 Meilleures selon l'IPV		Mères des 400 Meilleures selon l'IPV		Meilleures Nouvelles Vaches selon l'IPV	
Milk / Lait (kg)		Fat / Gras (kg)		Protein / Protéine (kg)		Conformation	
1 GLEN HAVEN LEWIS LANA	+ 1511	DOUBLE L	6.75% 1013	MAPLEHURST WARDEN BIANCA	6	12 COMFORT FARMS ASTELL	1254
2 MAPLEHURST AARONS BIANCA	+ 1387	LEWIS	6.00% 1084	LINDRIAN GARRETT PIPPY 465	5	14 LINDRIAN GRUMPY PIPPY	1252
3 LINDRIAN PIPPY TWO	+ 1347	WARDEN	6.00% 931	LINDRIAN PIZZAZ	4	19 COMFORT FARMS AZURE	1216
4 MAPLEHURST WARDEN BIANCA	0 1319	AARON	5.75% 1006	EBY MANOR WARDEN SELESTE	4	66 MAPLEHURST PIES ROSALINGA	1076
5 EBY MANOR LEWIS SECELIA	+ 1318	YOGIBEAR	5.00% 944	LINDRIAN MAGICMAN POPPY	4		
				MAPLEHURST ROGER BREANNE	4		
				EBY MANOR WARDEN ISABORA	4		
				MAPLEHURST DIPLOMAT'S BID	4		
Milk / Lait (kg)		Fat / Gras (kg)		Protein / Protéine (kg)		Conformation	
1 BIG SPRING REWARD KATIE	- 1760	LINDRIAN AARON PENNY TWO	0 58	1 MAPLEHURST SHARP'S GINA	0 43	1 SUN SET MAGIC NATALIE	- 14
2 MAPLEHURST TRUMPET'S WILEMINA	0 1727	MAPLEHURST AARONS BIANCA	0 57	2 MAPLEHURST GINGER	0 42	1 SUN SET MAGICMAN NATALIE-ANN	0 14
3 GLEN HAVEN LEWIS LANA	0 1475	EBY MANOR ANGELO DANIELLE	+ 55	3 GLEN HAVEN LEWIS LANA	0 41	3 BROADVIEW ZOOBY	N 13
4 BIG SPRING LEWIS JAMACIA	+ 1397	GLEN HAVEN LEWIS LANA	0 54	4 MAPLEHURST LEWIS BREA	+ 36	3 EBY MANOR TILLER WESLIE	- 13
5 BONNIEGLEN ICYCAL CHOCKY	- 1342	EBY MANOR LES DORA	+ 53	5 EBY MANOR ANGELO WHITNEY	0 35	3 SUN SET MISSION NATALENA	- 13
				5 EBY MANOR ANGELO DANIELLE	+ 35	3 EBY MANOR DYNASTY WESTIN	0 13
				5 BIG SPRING LEWIS JAMACIA	+ 35	3 BIG SPRING MAGIC JOY	0 13
						3 SPRING WALK TF NATALIE	- 13
						3 ELM SPRING R ROSALIE	0 13

Production Records (January - November 2014) Ranked by composite Milk, Fat & Protein

Yearlings

1	GUCANF11233238	CALLUMLEA JUDGEMENT ALICIA	PB	G	78	1	11	328	7271	293	4.0	215	3.0	266	214	222	702	KENNETH MCNABB	ON
2	GUCANF106836797	SEROL YOGIBEAR BESSICARI	PB	GP	82	1	11	382	6601	341	5.2	228	3.5	227	237	221	685	FERME SEROL SENC	QC
3	GUCANF11009722	LINDRIAN PIPPIE ONE ET	PB	GP	83	1	11	341	6382	314	4.9	239	3.7	219	217	230	666	JOHN & LINDA TAMIS	BC
4	GUCANF10996403	COMFORT FARMS SIERRA	PB	GP	80	1	10	330	6279	263	4.2	209	3.3	234	195	220	649	COMFORT FARMS LTD	ON
5	GUCANF11356183	MAPLEHURST AARONS LOLA	PB	VG	86	1	11	331	5992	265	4.4	194	3.2	221	193	200	614	ROBERT FORSTER	ON
6	GUCANF10996406	COMFORT FARMS SERENA	PB	G	75	1	11	312	5662	275	4.9	207	3.7	201	195	207	603	COMFORT FARMS LTD	ON
7	GUCANF10996391	COMFORT FARMS SINDY	87	G	72	1	11	342	6088	272	4.5	198	3.2	214	192	196	602	COMFORT FARMS LTD	ON
8	GUCANF11009703	LINDRIAN PATSIE MOREY 243	PB	GP	80	1	10	372	5821	258	4.4	206	3.5	208	184	206	598	JOHN & LINDA TAMIS	BC
9	GUCANF107424388	BONNIEGLEN DYNAMIC SHARON	75			1	11	247	6019	283	4.7	203	3.4	206	195	195	596	ROBERT MASON	QC
10	GUCANF11356185	MAPLEHURST NITRO GLISSEN	PB	VG	86	1	7	368	4916	242	4.9	172	3.5	192	191	189	572	KEN D FORSTER	ON

Jr. 2 Yr Old

1	GUCANF9594220	MAPLEHURST PIES AMAZING LOVE	PB	VG	87	2	3	488	8913	396	4.4	278	3.1	298	264	260	822	KEN D FORSTER	ON
2	GUCANF11009724	LINDRIAN PIPPY TWO ET	PB	GP	83	2	1	316	7926	413	5.2	287	3.6	262	275	266	803	JOHN & LINDA TAMIS	BC
3	GUCANF9594215	MAPLEHURST AARONS TREASURE	PB	VG	85	2	4	406	7519	392	5.2	265	3.5	248	258	245	751	KEN D FORSTER	ON
4	GUCANF11120520	EBY MANOR LEWIS FIESTA	PB	GP	83	2	3	353	7380	336	4.5	244	3.3	259	235	242	736	EBY MANOR LTD	ON
5	GUCANF11120514	EBY MANOR VANCE FRAN	PB	VG	85	2	4	442	7837	370	4.7	244	3.1	260	245	226	731	EBY MANOR LTD	ON
6	GUCANF10941352	GUERNSEY VIEW RETA'S EXPORT	PB	GP	82	2	5	454	7934	361	4.5	262	3.3	256	233	238	727	CEDAR RIDGE FARMS LTD	NB
7	GUCANF11120513	EBY MANOR VANCE JODI	75			2	3	336	7596	338	4.5	256	3.4	250	224	237	711	EBY MANOR LTD	ON
8	GUCANF10941344	GUERNSEY VIEW ROSE'S EXPECT	PB	GP	80	2	3	607	7322	318	4.3	231	3.1	257	222	229	708	CEDAR RIDGE FARMS LTD	NB
9	GUCANF11255595	BEAVERWOOD CASPIAN'S BEATRICE	PB			2	4	324	7955	330	4.2	270	3.4	253	210	241	704	GARY WEST	NB
10	GUCANF11120523	EBY MANOR VANCE TILLY	PB	GP	80	2	0	307	6683	341	5.1	224	3.4	237	240	224	701	EBY MANOR LTD	ON

Sr. 2 Yr Old

1	GUCANF11120492	EBY MANOR YOGI BETH	PB	VG	85	2	11	290	7661	375	4.9	257	3.4	246	238	231	715	EBY MANOR LTD	ON
2	GUCANF10913650	EBY MANOR YOGI SAPPHIRA	PB	G	79	2	11	317	7295	413	5.7	262	3.6	225	253	226	704	EBY MANOR LTD	ON
3	GUCANF11120497	EBY MANOR YOGI WINNY	PB	VG	85	2	9	316	7361	376	5.1	251	3.4	237	239	226	702	EBY MANOR LTD	ON
4	GUCANF10996388	COMFORT FARMS MIYA	PB	GP	80	2	7	424	7162	317	4.4	221	3.1	243	211	210	664	COMFORT FARMS LTD	ON
5	GUCANF10848148	BEAVERWOOD MINT'S MAISIE	PB			2	6	493	6877	333	4.8	256	3.7	218	211	227	656	GARY WEST	NB
6	GUCANF10848152	BEAVERWOOD MOREY'S ELIZA	PB			2	8	406	7386	288	3.9	235	3.2	240	185	214	639	GARY WEST	NB
7	GUCANF10848142	BEAVERWOOD LEGION'S ISLA	PB			2	9	334	6548	336	5.1	248	3.8	203	209	216	628	GARY WEST	NB
8	GUCANF10996379	COMFORT FARMS MARILLA	PB	G	78	2	11	354	6801	298	4.4	222	3.3	224	192	206	622	COMFORT FARMS LTD	ON
9	GUCANF10941353	GUERNSEY VIEW URMA'S EXPENSE	PB	VG	86	2	7	331	6278	333	5.3	216	3.4	206	216	198	620	CEDAR RIDGE FARMS LTD	NB
10	GUCANF10848151	BEAVERWOOD MOREY'S LILY	PB			2	7	412	7508	278	3.7	229	3.0	237	176	203	616	GARY WEST	NB

Jr. 3 Yr Old

1	GUCANF9723850	LINDRIAN PAMPER BEAR ET 200 ET	PB	EX	90	3	1	317	9682	618	6.4	385	4.0	289	370	324	983	JOHN & LINDA TAMIS	BC
2	GUCANF9723849	LINDRIAN PIPER BEAR ET 199 ET	PB	VG	87	3	4	464	9805	500	5.1	372	3.8	303	305	323	931	JOHN & LINDA TAMIS	BC
3	GUCANF9594209	MAPLEHURST ARCHIE WISDOM	PB	VG	89	3	0	373	8932	415	4.7	303	3.4	280	256	268	804	KEN D FORSTER	ON
4	GUCANF106501405	BONNIEGLEN AARON SHERRY	75	G	79	3	1	327	9549	377	4.0	325	3.4	281	220	269	770	ROBERT MASON	QC
5	GUCANF10941339	GUERNSEY VIEW SNOWBELLE WILLA	PB	EX	90	3	2	339	9019	416	4.6	303	3.4	268	246	253	767	CEDAR RIDGE FARMS LTD	NB
6	GUCANF9594205	MAPLEHURST LES BETTE	PB	EX	90	3	2	337	7486	420	5.6	247	3.3	239	266	223	728	KEN D FORSTER	ON
7	GUCANF10913633	BIG SPRING STONE WISFUL	PB	GP	84	3	5	544	8423	402	4.8	303	3.6	245	234	246	725	EBY MANOR LTD	ON
8	GUCANF10941335	GUERNSEY VIEW TOPS WHISTLER	PB	GP	80	3	3	339	8660	371	4.3	287	3.1	259	220	241	720	CEDAR RIDGE FARMS LTD	NB
9	GUCANF9863496	GUERNSEY VIEW DAWN'S WENDY	PB	G	73	3	2	535	8373	374	4.5	261	3.1	259	227	227	713	CEDAR RIDGE FARMS LTD	NB
10	GUCANF9594204	MAPLEHURST SKIPPER HUNDEW ET	PB	VG	87	3	1	300	7224	373	5.2	262	3.6	232	238	236	706	KEN D FORSTER	ON

Sr. 3 Yr Old

1	GUCANF10913640	EBY MANOR YOGI WAYWARD ET	PB	VG	86	3	7	456	8081	371	4.6	261	3.2	251	228	227	706	EBY MANOR LTD	ON
2	GUCANF9863497	GUERNSEY VIEW PORKY'S WALLIS	PB	VG	85	3	8	406	8561	363	4.2	278	3.2	255	214	232	701	CEDAR RIDGE FARMS LTD	NB
3	GUCANF9594194	MAPLEHURST AARONS REWARD ET	PB	VG	86	3	6	332	7381	395	5.3	276	3.7	222	235	234	691	KEN D FORSTER	ON
4	GUCANF9827898	DON HAVEN NEON VIBRANT	PB	VG	88	3	11	306	8350	349	4.2	265	3.2	254	210	226	690	JOHN W GORDON	ON
5	GUCANF9925643	MAPLEHURST LEWIS MICHELLE	PB	VG	85	3	10	439	8527	396	4.6	287	3.4	238	219	224	681	NATIONAL MUSEUM OF SCIENCE	ON
6	GUCANF9648377	BROADVIEW WHISKY	PB	EX	91	3	9	393	7252	390	5.4	255	3.5	223	236	220	679	ROB BEYNON	ON
7	GUCANF10848132	BEAVERWOOD YOGIBEAR'S WORRY	PB			3	8	344	7486	342	4.6	247	3.3	231	209	215	655	GARY WEST	NB
8	GUCANF8661646	ASHAWAY LS YESTERDAY	87			3	8	317	7123	337	4.7	252	3.5	224	208	223	655	DAVID BYERLAY	ON
9	GUCANF10996362	COMFORT FARMS DELTA	PB	GP	83	3	7	442	7219	323	4.5	247	3.4	228	201	219	648	COMFORT FARMS LTD	ON
10	GUCANF9863499	GUERNSEY VIEW STAR'S WELCOME	PB	GP	80	3	7	429	7846	349	4.5	249	3.2	228	202	204	634	CEDAR RIDGE FARMS LTD	NB

4 Yr Old

1	GUCANF9723801	LINDRIAN PARTY CHALLENGE ET ET	PB	GP	81	4	5	448	9383	492	5.2	336	3.6	268	278	269	815	JOHN & LINDA TAMIS	BC
2	GUCANF9594185	MAPLEHURST ARCHIE'S TRINKET	PB	VG	85	4	4	398	8912	354	4.0	334	3.8	271	212	285	768	KEN D FORSTER	ON
3	GUCANF9612262	EBY MANOR BLUE SPRUCE IVA	PB	VG	85	4	1	391	8918	475	5.3	331	3.7	246	262	257	765	EBY MANOR LTD	ON
4	GUCANF7924812	GUERNSEY VIEW LEANNE'S TESS	PB	GP	80	4	7	797	8646	398	4.6	294	3.4	260	236	249	745	CEDAR RIDGE FARMS LTD	NB
5	GUCANF9594166	MAPLEHURST ROYALTY EMMA BETH	PB	VG	87	4	9	358	9413	436	4.6	304	3.2	258	238	234	730	KEN D FORSTER	ON
6	GUCANF9612278	EBY MANOR LES DORA	PB	VG	87	4	1	360	7903	443	5.6	292	3.7	231	253	239	723	EBY MANOR LTD	ON
7	GUCANF9612272	EBY MANOR AARON SAMANTHA	PB	GP	82	4	1	342	8535	387	4.5	275	3.2	257	230	233	720	EBY MANOR LTD	ON
8	GUCANF9589106	BEAVERWOOD G.L.'S USOA	PB	GP	83	4	9	448	9338	382	4.1	290	3.1	256	209	223	688	GARY WEST	NB
9	GUCANF9612270	EBY MANOR ROYALTY IDEAL	PB	GP	81	4	0	315	8068	367	4.5	286	3.5	235	212	234	681	EBY MANOR LTD	ON
10	GUCANF7924815	GUERNSEY VIEW PORKY'S UNICORN	PB	GP	81	4	10	377	9129	370	4.0	295	3.2	249	202	227	678	CEDAR RIDGE FARMS LTD	NB

5 Yr Old

1	GUCANF7541898	LINDRIAN PARADE LEVI 118	PB	VG	85	5	7	410	10601	501	4.7	387	3.6	296	275	302	873	JOHN & LINDA TAMIS	BC
2	GUCANF95																		

RANK RANG	LPI RK TC A.I. CODE IPV RC CT CODE	NUMBER NUMERO	NAME NOM	HERDS TROUP	DAUS FILLES	TDR REL RJT FTAB	MILK LAIT	RK RC	PROT RC	FAT% %GRAS	PROT% %PROT	SCS CCS	CONF CONF	RK RC	HL DV	DF FF										
																	26 99	-0.20	-0.14	106	2.86	1	40	MS/SM	-1	105
1	1241	99 D	007GU00366	603342	15	41	771	85	1107	99	32	90	26	99	-0.20	-0.14	106	2.86	1	40 <td>MS/SM</td> <td>-1</td> <td>105</td> <td>105</td> <td>MSP/VT</td> <td>108</td>	MS/SM	-1	105	105	MSP/VT	108
			Lactation 1				332	85	907	38	25				-0.08	-0.12	107	2.96			FL/PM	5			MT/TT	103
			Lactation 2				253	83	1186	29	26				-0.25	-0.16	100	2.93			DS/PL	-3			CA/AV	105
			Lactation 3				186	82	1203	30	27				-0.26	-0.16	107	2.69			UD/PP	5D			DCA/AFV	100
2	1237	99 D	200GU00109	604312	26	71	1054	89	155	63	34	90	6	72	0.41	0.02	101	2.53	7	89 <td>MS/SM</td> <td>12</td> <td>111</td> <td>97</td> <td>MSP/VT</td> <td>109</td>	MS/SM	12	111	97	MSP/VT	109
			Lactation 1				511	89	45	27	1				0.36	-0.01	99	2.66			FL/PM	1			MT/TT	99
			Lactation 2				286	87	190	37	9				0.44	0.03	103	2.53			DS/PL	-1			CA/AV	98
			Lactation 3				257	86	194	38	10				0.43	0.04	101	2.41			UD/PP	7S			DCA/AFV	101
3	1089	99 D	200GU00111	604588	10	20	402	76	702	99	46	99	25	99	0.22	-0.01	97	2.81	-6	7 <td>MS/SM</td> <td>-5</td> <td>103</td> <td>99</td> <td>MSP/VT</td> <td>103</td>	MS/SM	-5	103	99	MSP/VT	103
			Lactation 1				168	75	881	52	29				0.14	-0.05	92	2.82			FL/PM	-1			MT/TT	104
			Lactation 2				134	74	749	47	26				0.25	0.02	102	2.94			DS/PL	0			CA/AV	105
			Lactation 3				100	71	428	37	14				0.28	0.00	101	2.68			UD/PP	5D			DCA/AFV	100
4	1038	99 D	200GU00001	10027474	18	23	416	76	377	90	31	90	16	90	0.22	0.05	104	3.24	-2	20 <td>MS/SM</td> <td>-2</td> <td>104</td> <td>107</td> <td>MSP/VT</td> <td>106</td>	MS/SM	-2	104	107	MSP/VT	106
			Lactation 1				180	75	293	26	12				0.17	0.01	103	3.26			FL/PM	-2			MT/TT	101
			Lactation 2				124	73	170	23	12				0.24	0.09	102	3.30			DS/PL	-6			CA/AV	103
			Lactation 3				112	70	456	35	20				0.24	0.06	106	3.17			UD/PP	1D			DCA/AFV	103
5	978	99 I	200GU00119	68022992	10	23	156	66	682	99	21	81	22	99	-0.08	0.01	100	3.45	3	60 <td>MS/SM</td> <td>5</td> <td>99</td> <td>101</td> <td>MSP/VT</td> <td>100</td>	MS/SM	5	99	101	MSP/VT	100
			Lactation 1				144	69	548	19	19				-0.10	-0.02	98	3.47			FL/PM	-2			MT/TT	99
			Lactation 2				12	58	597	19	22				-0.06	0.04	103	3.46			DS/PL	-2			CA/AV	103
			Lactation 3				0	50	565	18	19				-0.07	0.01	100	3.43			UD/PP	5S			DCA/AFV	103
6	963	90 D	028GU00123	202223	48	150	2352	94	-575	9	22	81	-5	45	0.72	0.22	104	2.95	5	75 <td>MS/SM</td> <td>-1</td> <td>104</td> <td>108</td> <td>MSP/VT</td> <td>100</td>	MS/SM	-1	104	108	MSP/VT	100
			Lactation 1				1095	95	-692	11	-9				0.69	0.24	101	3.01			FL/PM	7			MT/TT	99
			Lactation 2				717	94	-498	25	-1				0.69	0.21	104	3.00			DS/PL	3			CA/AV	102
			Lactation 3				540	93	-530	30	-3				0.77	0.19	107	2.84			UD/PP	3D			DCA/AFV	108
7	937	90 D	200GU00400	10032765	17	37	592	82	97	63	36	99	9	81	0.47	0.08	105	2.99	0	32 <td>MS/SM</td> <td>2</td> <td>101</td> <td>100</td> <td>MSP/VT</td> <td>111</td>	MS/SM	2	101	100	MSP/VT	111
			Lactation 1				268	82	215	33	8				0.33	0.00	100	3.20			FL/PM	-1			MT/TT	104
			Lactation 2				172	80	-18	32	8				0.50	0.12	106	2.97			DS/PL	-6			CA/AV	107
			Lactation 3				152	78	111	44	13				0.57	0.12	110	2.81			UD/PP	0			DCA/AFV	95
8	923	90 D	200GU00304	68003311	13	43	656	85	99	63	4	54	2	63	0.00	-0.02	104	3.11	3	60 <td>MS/SM</td> <td>0</td> <td>103</td> <td>110</td> <td>MSP/VT</td> <td>106</td>	MS/SM	0	103	110	MSP/VT	106
			Lactation 1				297	85	96	9	4				0.07	0.00	105	3.09			FL/PM	6			MT/TT	105
			Lactation 2				190	83	-18	-6	0				-0.08	0.01	102	3.23			DS/PL	-1			CA/AV	109
			Lactation 3				169	81	233	10	2				0.01	-0.07	104	3.00			UD/PP	3S			DCA/AFV	109
9	902	90 D	001GU00418	604268	7	26	506	81	-430	36	0	45	-7	45	0.29	0.11	98	2.80	3	60 <td>MS/SM</td> <td>3</td> <td>109</td> <td>106</td> <td>MSP/VT</td> <td>98</td>	MS/SM	3	109	106	MSP/VT	98
			Lactation 1				213	80	-208	10	1				0.31	0.12	100	3.02			FL/PM	4			MT/TT	103
			Lactation 2				174	78	-353	0	-5				0.22	0.09	94	2.71			DS/PL	0			CA/AV	107
			Lactation 3				119	75	-835	-11	-19				0.35	0.12	97	2.66			UD/PP	1S			DCA/AFV	109
10	887	80 I	007GU00302	600974	23	52	992	89	-213	45	15	63	-2	45	0.35	0.08	103	2.86	-7	0 <td>MS/SM</td> <td>-4</td> <td>111</td> <td>110</td> <td>MSP/VT</td> <td>107</td>	MS/SM	-4	111	110	MSP/VT	107
			Lactation 1				405	89	-328	7	-4				0.35	0.11	103	2.87			FL/PM	-6			MT/TT	110
			Lactation 2				303	87	-251	13	-4				0.36	0.06	103	2.87			DS/PL	-9			CA/AV	105
			Lactation 3				284	87	-29	24	3				0.35	0.06	101	2.86			UD/PP	2S			DCA/AFV	109

Provincial and National Averages Used as Benchmarks for Genetic Herd Inventory Reports
Moyennes provinciales et nationales à titre de point de repère pour les rapports d'Inventaire génétique du troupeau

Breed: Guernsey

- December 2014 / Décembre 2014 -

Race: Guernsey

All Active Cows / Toutes les Vaches Actives														
Province	No. Cows	% Inbreeding	Milk	Fat	Protein	% Fat	% Protein	SCS	CONF	Mammary System	Feet & Legs	Dairy Strength	Rump	LPI
	No. Vaches	% Consanguinité	Lait	Gras	Protéine	% Gras	% Protéine	CCS		Système mammaire	Pieds & membres	Puissance laitière	Croupe	IPV
PEI / IPE	1	4.48	-98	10.0	-3.0	0.2	0.0	2.99	2.0	2.0	0.0	-2.0	1.0	657
NB	95	6.73	-171.4	4.3	-3.7	0.2	0.0	2.9	1.5	1.1	0.9	-0.3	0.4	685
QC	4	4.84	-133.3	3.8	-1.5	0.1	0.1	2.93	0.8	0.3	0.8	0	0.3	607
ON	286	7.04	39	8.6	1.8	0.1	0.0	2.93	2.0	1.5	1.1	0.7	1.1	769
BC / CB	17	4.95	-225.9	-6.3	-1.4	0.0	0.1	3.19	3.9	3.6	2.5	1.5	0.5	687
CANADA	403	6.85	-24	6.9	0.3	0.12	0.02	2.93	1.9	1.5	1.1	0.5	0.9	744

Active Cows With Publishable Production Indexes / Vaches Actives avec Indices de Production Publiables														
Province	No. Cows	% Inbreeding	Milk	Fat	Protein	% Fat	% Protein	SCS	CONF	Mammary System	Feet & Legs	Dairy Strength	Rump	LPI
	No. Vaches	% Consanguinité	Lait	Gras	Protéine	% Gras	% Protéine	CCS		Système mammaire	Pieds & membres	Puissance laitière	Croupe	IPV
PEI / IPE	1	4.48	-98	10.0	-3.0	0.2	0.0	2.99	2.0	2.0	0.0	-2.0	1.0	657
NB	76	6.7	-103.9	6.3	-1.6	0.2	0.0	2.92	1.6	1.0	1.0	-0.1	0.5	717
QC	4	4.84	-133.3	3.8	-1.5	0.1	0.1	2.93	0.8	0.3	0.8	0.0	0.3	607
ON	233	7.1	61.5	9.7	2.6	0.1	0.0	2.93	2.0	1.6	1.0	0.7	1.0	786
BC / CB	15	5.26	-133.4	-0.8	0.0	0.1	0.1	3.11	4.4	4.2	2.7	1.9	0.7	741
CANADA	329	6.85	12	8.3	1.5	0.12	0.02	2.94	2.0	1.6	1.1	0.6	0.9	766

Active Cows With Unpublishable Production Indexes / Vaches Actives avec Indices de Production Non-Publiables														
Province	No. Cows	% Inbreeding	Milk	Fat	Protein	% Fat	% Protein	SCS	CONF	Mammary System	Feet & Legs	Dairy Strength	Rump	LPI
	No. Vaches	% Consanguinité	Lait	Gras	Protéine	% Gras	% Protéine	CCS		Système mammaire	Pieds & membres	Puissance laitière	Croupe	IPV
PEI / IPE	0	----	----	----	----	----	----	----	----	----	----	----	----	----
NB	19	6.84	-441.1	-3.6	-12.3	0.24	0.04	2.82	0.9	1.4	0.6	-1.2	0.1	554
QC	0	----	----	----	----	----	----	----	----	----	----	----	----	----
ON	53	6.98	-59.9	3.7	-1.8	0.1	0.01	2.91	1.8	1.2	1.4	0.8	1.4	694
BC / CB	2	2.61	-920	-47.5	-12.0	-0.19	0.38	3.82	0.0	-0.5	1.0	-1.5	-0.5	279
CANADA	74	6.83	-181	0.4	-4.7	0.13	0.03	2.91	1.6	1.2	1.2	0.2	1.0	647

Top 5 Guernsey Herds by LPI

December/Décembre 2014

TOP 5 GUERNSEY HERDS BY LPI / 5 MEILLEURS TROUPEAUX GUERNSEY SELON L'IPV
 (minimum 20 active cows with official LPI) / (minimum de 20 vaches actives avec un IPV officiel)

Rank Rang	LPI IPV	No. Cows No. Vaches	Name of Farm / Owner Nom de la Ferme / Propriétaire	City Ville	Province	Milk Lait	Fat Gras	Protein Protéine	Fat % % Gras	Prot % % Prot	SCS CCS	CONF	MS SM	F&L P&M	DS PL	RP Cr
1	878	58	EBY MANOR FARM LTD.	WATERLOO	ON	193	17	8	0.14	0.02	3.02	2.2	1.4	1.8	1.1	0.6
2	804	44	CEDAR RIDGE FARMS LTD	KESWICK RIDGE	NB	-81	12	0	0.23	0.04	2.89	2.6	1.7	1.7	1.0	0.8
3	767	52	MAPLEHURST FARMS	LYNDEN	ON	43	12	4	0.16	0.03	2.95	1.2	1.0	0.5	0.1	1.1
4	749	48	BROADVIEW	MAPLE	ON	149	7	2	0.01	-0.04	2.93	2.6	2.0	1.0	1.4	2.1
5	745	43	COMFORT FARMS	ST ANNS	ON	-77	2	-2	0.09	0.01	2.83	1.7	2.2	0.0	0.2	-0.6

Coloured Breed Highlights - December 2014 -

Successful Young Sire Graduate Enters Top 5 LPI in Guernseys

Idle Gold J King Caspian (Twin Brook Enhancer Jonah x Royal Oak) hits the scene running as he lands at #5 LPI, #4 Milk, #3 Protein and tied at #8 Fat. He follows the exact same group of LPI leaders including Lewis, Double L, Bingo and Jordan, in that order. For cows, there is also very little change among the Top 5 LPI, still led by Glen Haven Lewis Lana and Maplehurst Aarons Bianca at #1 and #2 LPI, respectively. They are now followed by Lindrian Pippy Two (#3), Maplehurst Warden Bianca (#4) and Eby Manor Lewis Secelia at #5 LPI. Three newly indexed cows reach the Top 20 LPI status including Comfort Farms Astell (#12), Lindrian Grumpy Pippy (#14, sister to Pippy Two) and Comfort Farms Azure (#19, maternal sister to dam of Astell).

*Other interesting reports from CDN can be viewed at:
http://www.cdn.ca/files_ge_articles.php*



In Memory of **Ivor Williams**

Peacefully surrounded by his family on Saturday, November 15, 2014 at the age of 83. David John Ivor Williams, beloved husband of the late Adelle (née Clark). Loving Dad of Neil (Natalie), Jim, Greg (Tanya), and Lori Stephenson (Kevin). Cherished Poppa of Katie and Andrew. Brother of Gwen Moodie and Trevor (Patty). Predeceased by his parents Elwy & Marion Williams. Friends are invited to attend a visitation at the

Alfred Taylor Recreation Centre, 2300 Community Way, North Gower on Tuesday from 1 to 4 and 7 to 9 p.m. where funeral service will be held on Wednesday at 1 pm. Interment Rideauvale Cemetery. Those wishing may make memorial donations to the University of Ottawa Heart Institute or The Ottawa Regional Cancer Foundation.

2015 Newsletter & Journal Schedule

2015 Newsletter & Journal Schedule

May – Journal (copy due April 1st)
 August – Newsletter (copy due July 15th)
 December – Newsletter (copy due November 15th)

Newsletter Advertising Rates

Size	Member Rate	Non Member Rate
Full Page	\$120	\$130
Half Page	\$75	\$90
Quarter Page	\$50	\$60

Colour is available at an additional cost of \$20.

Journal Advertising Rates

Size	Member Rate	Non Member Rate
Full Page	\$240	\$420
Half Page	\$150	\$240
Third Page	\$120	\$180
Quarter Page	\$100	\$150
Front Cover	\$360	n/a

All advertisements in the Journal are in full colour.

Canadian Guernsey Association
 7660 Mill Road
 Guelph, ON, N1H 6J1
 Email: info@guernseycanada.ca
 Phone: 519-836-2141
 Fax: 519-763-6582

CLASSIFICATION SCHEDULE Dec 2014 – Feb 2015

Early December

On – Perth
On – mid round: Wellington
Qc – Riviere Du Loup, Temiscouata, Rimouski
Qc – mid round: Chateauguay, Beauharnois, Shefford, Richmond, Missisquoi
Saskatchewan: Mid Round

Mid December

On – mid round: Northern Ontario, Thunder Bay
Qc – Matapedia, Bonaventure, Matane

Early January

On – Leeds
On – mid round: Dundas, Glengarry, Stormont, Prescott, Niagara, Wentworth, Brant, Haldimand, Norfolk, Carleton, Russell
Qc – Arthabaska, Megantic, Wolfe,
Qc – mid round: Sherbrooke, Stanstead
BC – Lower & Central Fraser Valley, Richmond, Delta

Mid January

On – Renfrew, Bruce
Qc – Lotbiniere, Nicolet, Yamaska
Qc – midround: Brome, Compton
BC – Upper Fraser Valley, Okanagan, Vancouver Island

Late January

On – Grenville, Lanark, Grey, Huron
Qc – Drummond

Early February

On – Halton, York, Peel, Simcoe, Dufferin, Ontario
Qc – Bagot, Richelieu, Vercheres, Rouville, St. Hyacinthe, Pontiac
Qc – mid round: Frontenac, Beauce, Levis, Quebec, Montmorency

Mid February

Qc - Abitibi, Temiscamingue, Labelle, Papineau, Gatineau, Argenteuil, Deux Montagnes, Terrebonne

Qc – mid round: Dorchester
Alberta: Mid Round

Late February

Qc – L'Assomption, Montcalm, Joliette, Berthier, Maskinonge, St. Maurice, Laviolette
Qc – mid round: Bellechasse, Montmagny, L'Islet
Manitoba: Mid Round



FEBRUARY 4 – 5, 2015

**STRATFORD ROTARY COMPLEX,
STRATFORD, ONTARIO CANADA**

YOUR Canadian Dairy Showcase!



**COW COLISEUM
WELCOME | BIENVENUE | WELKOM**

13,900 Attendees

91% Active Dairy Producers!



CANADIAN DAIRY NETWORK (CDN) RESEAU LAITIER CANADIEN

DECEMBER 2014 PA

TOP LPI COW REPORT / RAPPORT DES MEILLEURES VACHES SELON L'IPV

BREED/RACE: GUERNSEY

RANK	RANG	LPI	IPV	RC	COW	COW NAME	NOM DE LA VACHE	BIRTH D	SIRE	DAM	L CALV	D JEL	L HERD	LAC	TDR	SUP	REL	MILK	RC	FAT	RC	PROT	RC	PROT	RC	FAT	PROT	CONF	RC	SCS	ACT
		%		%				DATE	PERE	MERE	D	VEL	D	JEL	D	TROUP	LAC	RUT	SUP	FIAB	LAIT	RC	GRAS	RC	FAT	RC	PROT	CONF	RC	CCS	ACT
1	1511	99	7966671		GLEN HAVEN LEWIS LANA	603342	07-12	603342	7388455	10-11	46	05-25214	2	11	11	51	51	1475	99	54	99	41	99	-0.11	-0.12	1	43	2.84			
2	1387	99	9594167		MAPLEHURST AARONS BIANCA	604670	08-07	604670	10000677	12-12	274	05-30154	3	28	28	62	62	557	89	57	99	26	98	0.46	0.08	6	87	2.91	Y		
3	1347	99	1009724		LINDRIAN PIPPY TWO	604312	11-11	604312	8838476	13-12	294	05-88385	1	8	8	53	53	148	64	44	98	13	88	0.56	0.10	9	97	2.60	Y		
4	1319	99	10000677		MAPLEHURST WARDEN BIANCA	20223	06-06	20223	199698	01-02	298	05-30154	3	26	26	72	72	787	95	40	95	24	98	-0.08	-0.05	7	92	3.03			
5	1318	99	8860662		EBY MANOR LEWIS SECELIA	603342	06-01	603342	8665234	10-12	276	05-30167	3	28	28	63	63	726	93	30	95	22	96	-0.01	-0.03	6	87	2.81			
6	1317	99	9984882		EBY LAWN DELTA BEV	604643	08-08	604643	7766138	12-12	272	05-30167	3	28	28	59	59	971	97	46	99	34	99	0.07	0.01	1	43	3.24	Y		
7	1297	99	9863492		GUERNSEY VIEW TINA'S WINNIE	604229	09-04	604229	7924802	13-08	301	04-97491	3	25	25	60	60	270	72	44	98	30	99	0.46	0.25	4	73	3.57			
8	1296	99	8508427		GUERNSEY VIEW KIT'S RUBY	603342	05-02	603342	10034496	09-08	36	04-97491	3	18	18	58	58	851	95	29	94	26	98	-0.09	-0.04	4	73	2.98			
9	1281	99	7389455		GLEN HAVEN DOUBLE BUBBLE	604312	03-10	604312	200304	07-12	298	05-25214	2	24	24	61	61	822	95	42	98	25	98	0.10	-0.04	3	61	2.66			
10	1270	99	10913653		EBY MANOR AARON INDIGO	604670	10-03	604670	9612236	13-07	305	05-30167	2	20	20	57	57	923	97	52	99	29	99	0.17	-0.04	3	61	2.99	Y		
11	1258	98	9863477		GUERNSEY VIEW NIKKI'S UNITY	604229	08-11	604229	9508412	13-06	290	04-97491	3	25	25	60	60	374	80	22	87	20	95	0.08	0.05	7	92	2.91	Y		
12	1254	98	10996419		COMFORT FARMS ASTELL	604312	12-06	604312	9598055	14-06	92	05-30151	1	3	3	43	43	244	71	29	94	12	86	0.27	0.05	9	97	2.73	Y		
13	1253	98	9612230		EBY MANOR DL LEAH	604312	07-08	604312	8860622	11-05	285	05-30167	2	20	20	59	59	-344	25	45	98	9	78	0.90	0.30	2	52	2.58			
14	1252	98	11009747		LINDRIAN GRUMPY PIPPY	604960	12-06	604960	8838476	14-05	145	05-88385	1	4	4	47	47	303	76	43	98	18	93	0.34	0.03	5	80	2.83	Y		
15	1251	98	8265750		LINDRIAN PIZZAZ	20213	01-08	20213	8171601	05-11	301	05-88385	3	23	23	76	76	331	96	35	96	22	96	-0.04	-0.11	7	92	2.61			
16	1238	98	8860676		EBY MANOR ANGELO WHITNEY	8531567	06-06	8531567	8454049	10-09	294	05-30167	3	28	28	55	55	673	92	42	98	35	99	0.19	0.16	1	43	3.17	Y		
17	1219	98	9723812		LINDRIAN AARON PENNY TWO	604670	09-01	604670	8265750	12-04	270	05-88385	2	14	14	58	58	682	93	58	99	22	96	0.42	-0.02	5	80	2.67			
18	1218	97	9723811		LINDRIAN AARON PENNY ONE	604670	09-01	604670	8265750	13-05	276	05-29659	3	24	18	55	55	566	90	46	99	17	93	0.31	-0.03	5	80	2.69	Y		
19	1216	97	10996420		COMFORT FARMS AZURE	604312	12-06	604312	9598018	14-06	101	05-30151	1	4	4	47	47	148	64	20	85	8	75	0.20	0.14	8	95	2.72	Y		
20	1215	97	9612262		EBY MANOR BLUE SPRUCE IVA	68012543	08-11	68012543	8980680	13-01	279	05-30167	3	26	26	58	58	312	75	39	98	22	96	0.38	0.17	2	52	3.04			
21	1208	97	68009960		FROSTED BEAUTY HILLPOINT JEWEL	603341	06-02	603341	3062230	10-02	302	05-30167	2	20	20	62	62	533	88	43	98	20	95	0.30	0.02	3	61	3.06	Y		
22	1204	97	7433732		MAPLEHURST LEWIS BREA	603342	05-05	603342	8531552	09-07	280	04-97491	2	16	16	62	62	1270	99	25	90	36	99	-0.39	-0.09	1	43	2.92			
23	1196	97	9612278		EBY MANOR LES DORA	604826	09-07	604826	8860673	13-09	300	05-30167	3	30	30	59	59	264	72	53	99	22	96	0.62	0.18	-1	25	2.83	Y		
24	1191	97	8860673		EBY MANOR ANGELO DANIELLE	8531567	06-05	8531567	10033581	11-02	287	05-30167	3	29	29	58	58	589	90	55	99	35	99	0.43	0.19	-3	13	3.08	Y		
25	1188	97	11120501		EBY MANOR LEWIS KATIE	603342	10-08	603342	9612257	13-11	294	05-30167	2	20	20	57	57	1329	99	50	99	32	99	-0.08	-0.16	0	34	2.96	Y		
26	1185	96	7433778		MAPLEHURST LOUIE FALLON	68003311	07-01	68003311	8531531	11-11	279	05-30154	3	27	27	64	64	224	69	33	96	14	89	0.35	0.09	1	43	3.17	Y		
27	1184	96	8838476		LINDRIAN GARRETT PIPPY 465	10006170	04-01	10006170	8171601	08-07	281	05-88385	3	23	23	69	69	-120	43	28	93	5	67	0.50	0.13	11	99	2.70			
28	1180	96	11028525		BIG SPRING LEWIS JAMACIA	603342	10-03	603342	7679997	14-06	88	05-23515	3	18	18	45	45	1397	99	32	95	35	99	-0.37	-0.16	-1	25	2.91	Y		
29	1178	96	9723850		LINDRIAN PAMPER BEAR ET 200	604917	09-12	604917	8838476	14-03	186	05-88385	3	22	22	60	60	-122	43	30	95	7	73	0.54	0.16	10	98	2.92	Y		
30	1176	96	9612272		EBY MANOR AARON SAMANTHA	604670	09-05	604670	8860662	13-06	272	05-30167	3	28	28	60	60	910	96	35	96	24	98	-0.05	-0.09	4	73	2.98	Y		
31	1165	96	7911202		CALLUMLEA LANE SHELBY	8531580	06-03	8531580	7477257	10-08	267	05-30007	3	27	27	62	62	1169	98	45	98	30	99	-0.06	-0.13	2	52	2.82			
32	1160	96	7433741		MAPLEHURST LES VOLTS	604826	05-10	604826	10035147	11-02	281	05-30154	3	32	32	61	61	552	89	34	96	19	94	0.16	0.00	6	87	2.86	Y		
33	1158	96	9612277		EBY MANOR LEWIS SUMMER	603342	09-07	603342	8665234	14-03	211	05-30167	3	26	26	61	61	-70	48	28	93	11	84	0.47	0.18	3	61	2.88	Y		
34	1157	95	11259744		GUERNSEY VIEW TINA'S YANCEY	604229	11-04	604229	7924802	13-05	285	04-97491	1	8	8	50	50	131	62	28	93	18	93	0.31	0.14	5	80	3.26	Y		
35	1152	95	9668875		EBY LAWN LUKURY FLOWER	602751	07-11	602751	8892101	12-06	20	05-30167	3	20	20	56	56	1177	99	20	85	28	99	-0.42	-0.16	4	73	3.11			
36	1150	95	8280355		BROADVIEW NIBBLE	603229	03-04	603229	10034286	07-10	304	05-30148	2	17	17	58	58	743	94	28	93	23	97	-0.05	-0.02	3	61	3.07			
37	1149	95	9598036		COMFORT FARMS SHAYNA	604312	08-09	604312	7645044	12-10	283	05-30151	3	29	29	59	59	-384	23	21	86	-6	34	0.57	0.11	8	95	2.61	Y		
38	1145	95	1003331		MAPLEHURST GARTH'S GALATEA	603300	09-09	603300	10019226	04-02	26	05-30154	3	18	18	58	58	963	97	22	87	28	99	-0.20	-0.02	2	52	2.92			
39	1141	95	10019226		MAPLEHURST SHARP'S GINA	601474	07-08	601474	200627	02-04	300	05-30154	3	26	26	62	62	1245	99	21	86	43	99	-0.45	0.03	-4	9	3.00			
40	1139	95	8676623		REDGOLD TRADITION'S PARFAIT	20221	04-10	20221	8676602	09-01	304																				

TOP 50 GUERNSEY HEIFERS BY LPI PARENT AVERAGE (PA LPI) - DECEMBER 2014 GENETIC EVALUATIONS
50 MEILLEURES GÉNÉSSES GUERNSEY SELON LA MOYENNE DES PARENTS POUR L'IPV (IPV WP) - ÉVALUATIONS GÉNÉTIQUES DÉCEMBRE 2014

(Based on heifers born in the past 30 months from dams with an official LPI and sires with an official or MACLE LPI / Basée sur les génisses nées dans les 30 derniers mois issues de mères avec un IPV officiel ou MACÉ)

HEIFER PARENT AVERAGES AND OTHER INFORMATION / MOYENNES DES PARENTS DES GÉNÉSSES ET D'AUTRES RENSEIGNEMENTS		SIRE INFORMATION / RENSEIGNEMENTS DU PÈRE												DAM INFORMATION / RENSEIGNEMENTS DE LA MÈRE											
RANK / RANG	LPI IPV	REGISTRATION / ENREGISTREMENT	NAME / NOM	AGE / ÂGE	MLK / LAIT	FAT / GRAS	PROTEIN / PROTÉINE	%FAT / %GRAS	%PROT / %PROT	CONF / CONF	SCS / CSS	MS / MS	FAL / PAM	DS / PL	RP / CR	REGISTRATION / ENREGISTREMENT	NAME / NOM	SEWEN CODE / CODE DE SEMENCE	LPI IPV	REGISTRATION / ENREGISTREMENT	NAME / NOM	LPI IPV	REGISTRATION / ENREGISTREMENT	NAME / NOM	LPI IPV
1	1261	CAN 11632403	LINDRIAN PETITE ALSTAR	22	557	34	15	0.13	-0.06	2.85	7	7	5	4	2	USA 604761	SNIDERS RONALDS ALSTAR	0007GU000398	1337 M	CAN 8838476	LINDRIAN GARRETT PIPPY 485	1337 M	CAN 8838476	LINDRIAN GARRETT PIPPY 485	1184
2	1254	CAN 11553948	EBY MANOR D L INDY	30	539	43	18	0.29	-0.01	2.76	5	7	2	2	-5	USA 604312	PINE RIDGE DOUBLE L-ET	0200GU001009	1237 D	CAN 10913653	EBY MANOR AARON INDIGO	1237 D	CAN 10913653	EBY MANOR AARON INDIGO	1270
3	1215	CAN 11632414	LINDRIAN PAY STAR	02	686	34	17	0.04	-0.09	2.91	6	4	4	4	2	USA 604761	SNIDERS RONALDS ALSTAR	0007GU000398	1337 M	CAN 8723849	LINDRIAN PIPER BEAR ET 199	1337 M	CAN 8723849	LINDRIAN PIPER BEAR ET 199	1083
4	1179	CAN 11902286	COMFORT FARMS AZELIA	6	336	33	12	0.25	0.00	2.80	8	9	1	1	1	USA 68006130	GOLDEN J LES GEORGE	0001GU000434	1141 M	CAN 10996420	COMFORT FARMS AZURE	1141 M	CAN 10996420	COMFORT FARMS AZURE	1216
5	1160	CAN 11632405	LINDRIAN GEO PAM	25	201	38	11	0.42	0.06	2.90	9	8	3	4	3	USA 68006130	GOLDEN J LES GEORGE	0001GU000434	1141 M	CAN 9723850	LINDRIAN PAMPER BEAR ET 200	1141 M	CAN 9723850	LINDRIAN PAMPER BEAR ET 200	1178
6	1156	CAN 11902281	COMFORT FARMS SHAYLA	15	256	17	11	0.09	-0.03	2.90	7	7	2	3	1	USA 604751	TROTACRE JAY MR LUXURY	0007GU000309	1163 M	CAN 9588036	COMFORT FARMS SHAYNA	1163 M	CAN 9588036	COMFORT FARMS SHAYNA	1149
7	1145	CAN 11553955	EBY MANOR D L JULIE	28	692	22	11	-0.09	0.05	2.88	5	7	1	-3	-3	USA 604312	PINE RIDGE DOUBLE L-ET	0200GU001009	1237 D	CAN 9612223	EBY MANOR VISA JOAN	1237 D	CAN 9612223	EBY MANOR VISA JOAN	1053
8	1113	CAN 11632443	LINDRIAN PAGEANA	15	771	37	18	0.05	-0.11	2.81	4	3	2	-1	4	USA 68006130	GOLDEN J LES GEORGE	0001GU000434	1141 M	CAN 11009891	LINDRIAN PALANIE 231	1141 M	CAN 11009891	LINDRIAN PALANIE 231	1085
9	1111	CAN 11681888	GUERNSEY VIEW YALES ANICA	24	302	39	10	0.37	-0.01	2.80	5	6	0	-3	0	USA 68006130	GOLDEN J LES GEORGE	0001GU000434	1141 M	CAN 11259743	GUERNSEY VIEW WHITNEY'S YALE	1141 M	CAN 11259743	GUERNSEY VIEW WHITNEY'S YALE	1081
10	1109	CAN 11632455	LINDRIAN PRINA BLUE	07	311	32	13	0.23	-0.01	2.88	7	6	5	2	1	USA 604761	JENS GOLD C BLUE SPRUCE-ET	0001GU000436	966 M	CAN 11009747	LINDRIAN GRUMPY PIPPY	966 M	CAN 11009747	LINDRIAN GRUMPY PIPPY	1252
11	1084	CAN 11259767	GUERNSEY VIEW BIANCAS ZOEV	01	286	22	19	0.12	0.12	2.96	4	7	0	2	1	USA 604229	COULLEE CREST LUXURY SPIDER-ET	0001GU000415	1177 M	CAN 10493739	MAPLEHURST GOLDEN BIANCA	1177 M	CAN 10493739	MAPLEHURST GOLDEN BIANCA	990
12	1076	CAN 10996422	COMFORT FARMS GOLD	15	189	23	1	0.47	0.11	2.64	5	8	1	-1	-4	USA 604312	PINE RIDGE DOUBLE L-ET	0200GU001009	1237 D	CAN 10996377	COMFORT FARMS GOLDLOCKS	1237 D	CAN 10996377	COMFORT FARMS GOLDLOCKS	915
13	1073	CAN 11902271	COMFORT FARMS JENICE	22	889	31	25	-0.12	-0.07	2.88	-2	-3	1	1	-3	USA 68001358	SPRING WALK ICY/CEBERG-ET	0001GU000433	1226 M	CAN 9598049	COMFORT FARMS JENNAH	1226 M	CAN 9598049	COMFORT FARMS JENNAH	920
13	1073	CAN 11858942	GUERNSEY VIEW ULTIMATES ANDY	07	206	29	10	0.30	0.04	2.88	4	6	1	-1	-6	USA 604312	PINE RIDGE DOUBLE L-ET	0200GU001009	1237 D	CAN 7324814	GUERNSEY VIEW MISSY'S ULTIMATE	1237 D	CAN 7324814	GUERNSEY VIEW MISSY'S ULTIMATE	908
15	1072	CAN 11632452	LINDRIAN B S PAMELA	07	84	26	7	0.33	0.06	2.92	10	9	4	7	1	USA 68012543	JENS GOLD C BLUE SPRUCE-ET	0001GU000436	966 M	CAN 9723850	LINDRIAN PAMPER BEAR ET 200	966 M	CAN 9723850	LINDRIAN PAMPER BEAR ET 200	1178
16	1065	CAN 11858950	GUERNSEY VIEW WHIS AMY	25	134	15	7	0.13	0.04	2.86	9	8	2	4	5	USA 604960	GOLDEN J RONALD GRUMPY	0007GU000405	1214 M	CAN 10941334	GUERNSEY VIEW NIKKIS WII	1214 M	CAN 10941334	GUERNSEY VIEW NIKKIS WII	915
17	1063	CAN 11902290	COMFORT FARMS SCARLET	15	163	35	11	0.40	0.07	2.92	4	3	-1	-1	3	USA 68006130	GOLDEN J LES GEORGE	0001GU000434	1141 M	CAN 10996406	COMFORT FARMS SERENA	1141 M	CAN 10996406	COMFORT FARMS SERENA	965
18	1058	CAN 11788433	REDNGOLD G ALASKA	04	57	20	7	0.25	0.06	2.80	5	6	0	-1	2	USA 604960	GOLDEN J RONALD GRUMPY	0007GU000405	1214 M	CAN 9598044	REDNGOLD J YUKONGOLD	1214 M	CAN 9598044	REDNGOLD J YUKONGOLD	902
19	1057	CAN 11553965	EBY MANOR GEO LILLIAN	16	146	40	9	0.49	0.06	2.95	6	6	-1	2	3	USA 68006130	GOLDEN J LES GEORGE	0001GU000434	1141 M	CAN 10913631	EBY MANOR AARON LILLY	1141 M	CAN 10913631	EBY MANOR AARON LILLY	972
20	1049	CAN 11591083	BROADVIEW CAROL 3RD	13	510	28	21	0.07	0.10	2.85	0	-4	4	3	6	USA 6801358	SPRING WALK ICY/CEBERG-ET	0001GU000433	1226 M	CAN 9989536	BROADVIEW YOLANDA	1226 M	CAN 9989536	BROADVIEW YOLANDA	871
21	1036	CAN 11858946	GUERNSEY VIEW TINAS AUTUMN	04	330	23	18	0.11	0.10	3.01	5	6	1	7	4	USA 604229	COULLEE CREST LUXURY SPIDER-ET	0001GU000415	1177 M	CAN 10941334	GUERNSEY VIEW NIKKIS WII	1177 M	CAN 10941334	GUERNSEY VIEW NIKKIS WII	915
22	1036	CAN 11858946	GUERNSEY VIEW TINAS AUTUMN	11	330	23	18	0.11	0.10	3.01	5	6	1	7	4	USA 604229	COULLEE CREST LUXURY SPIDER-ET	0001GU000415	1177 M	CAN 10941334	GUERNSEY VIEW NIKKIS WII	1177 M	CAN 10941334	GUERNSEY VIEW NIKKIS WII	1106
23	1025	CAN 9989567	BROADVIEW ARLE	06	201	31	7	0.32	0.00	2.64	2	5	0	-2	-4	USA 604312	PINE RIDGE DOUBLE L-ET	0200GU001009	1237 D	CAN 9648687	BROADVIEW W/ASABI	1237 D	CAN 9648687	BROADVIEW W/ASABI	813
24	1024	CAN 11858963	GUERNSEY VIEW YALES BLESSING	20	185	27	6	0.27	-0.01	2.83	6	6	2	4	-5	USA 68012543	JENS GOLD C BLUE SPRUCE-ET	0001GU000436	966 M	CAN 11259743	GUERNSEY VIEW WHITNEY'S YALE	966 M	CAN 11259743	GUERNSEY VIEW WHITNEY'S YALE	1081
25	1022	CAN 11356239	MAPLEHURST GARY ROSETTA	04	711	18	22	-0.18	-0.05	3.13	5	6	1	6	2	USA 68013855	GOLDEN J SKIPPER GARY	0007GU000428	968 M	CAN 11356180	MAPLEHURST PIES ROSALINGA	968 M	CAN 11356180	MAPLEHURST PIES ROSALINGA	1076
26	1017	CAN 11667341	GUERNSEY VIEW CAMEL	01	330	12	8	-0.04	-0.04	2.85	8	6	4	7	5	USA 68012543	JENS GOLD C BLUE SPRUCE-ET	0001GU000436	966 M	CAN 8508412	GUERNSEY VIEW JAYDEN'S NIKKI	966 M	CAN 8508412	GUERNSEY VIEW JAYDEN'S NIKKI	1067
26	1017	CAN 11681871	GUERNSEY VIEW NIKKIS ZENNA-ET	15	330	12	8	-0.04	-0.04	2.85	8	6	4	7	5	USA 68012543	JENS GOLD C BLUE SPRUCE-ET	0001GU000436	966 M	CAN 8508412	GUERNSEY VIEW JAYDEN'S NIKKI	966 M	CAN 8508412	GUERNSEY VIEW JAYDEN'S NIKKI	1067
28	1014	CAN 11681888	GUERNSEY VIEW WISDOMS ZEBRENA	26	97	24	14	0.28	0.16	3.00	2	5	-1	4	0	USA 604229	COULLEE CREST LUXURY SPIDER-ET	0001GU000415	1177 M	CAN 10941332	GUERNSEY VIEW L.C.S WISDOM	1177 M	CAN 10941332	GUERNSEY VIEW L.C.S WISDOM	861
29	1007	CAN 11858960	GUERNSEY VIEW EXPENSE BLOSSOM	12	65	24	5	0.32	0.02	2.78	5	4	2	3	0	USA 68012543	JENS GOLD C BLUE SPRUCE-ET	0001GU000436	966 M	CAN 10941353	COMFORT FARMS MARBLE	966 M	CAN 10941353	COMFORT FARMS MARBLE	1048
30	1005	CAN 11902274	COMFORT FARMS MARGRET	07	84	18	3	0.22	0.01	2.63	5	7	2	-2	-3	USA 604312	PINE RIDGE DOUBLE L-ET	0200GU001009	1237 D	CAN 9589047	COMFORT FARMS MARBLE	1237 D	CAN 9589047	COMFORT FARMS MARBLE	772
31	1004	CAN 11755882	BEAVERWOOD MINT'S PIPER	25	338	11	15	-0.02	0.05	2.84	5	2	4	-1	-2	USA 68017224	SPRING WALK SHERBERT'S MINT	0007GU000434	1177 M	CAN 9589047	BEAVERWOOD MISSION'S URSULA	1177 M	CAN 9589047	BEAVERWOOD MISSION'S URSULA	881
32	1000	CAN 11902285	COMFORT FARMS AVON	09	52	14	7	0.18	0.08	2.64	6	7	-2	1	-1	USA 604960	GOLDEN J RONALD GRUMPY	0007GU000405	1214 M	CAN 9588038	COMFORT FARMS AVA	1214 M	CAN 9588038	COMFORT FARMS AVA	786
33	997	CAN 11009750	LINDRIAN PAPPY GEO	06	260	31	12	0.28	0.05	2.90	5	4	-1	2	4	USA 68006130	GOLDEN J LES GEORGE	0001GU000434	1141 M	CAN 7541808	LINDRIAN PIPPY LAMAR 28	1141 M	CAN 7541808	LINDRIAN PIPPY LAMAR 28	852
34	995	CAN 11681865	GUERNSEY VIEW EXPERT'S ZINNIA	16	331	35	10	0.29	-0.03	2.81	5	4	1	2	2	USA 68006130	GOLDEN J LES GEORGE	0001GU000434	1141 M	CAN 10941350	GUERNSEY VIEW STARS EXPERT	1141 M	CAN 10941350	GUERNSEY VIEW STARS EXPERT	849
35	993	CAN 11553989	EBY MANOR GEO SAPHIRE	09	37	6	6	0.48	0.04	2.86	4	2	0	1	2	USA 68006130	GOLDEN J LES GEORGE	0001GU000434	1141 M	CAN 10913650	EBY MANOR YOGI SAPHIRA	1141 M	CAN 10913650	EBY MANOR YOGI SAPHIRA	845
36	988	CAN 11553984	EBY MANOR GEO RUTHY	12	304	37	11	0.33	0.01	3.05	6	5	2	-1	0	USA 68006130	GOLDEN J LES GEORGE	0001GU000434	1141 M	CAN 9612276	EBY MANOR AARON RUTHY	1141 M	CAN 9612276	EBY MANOR AARON RUTHY	835
37	983	CAN 11591087	BROADVIEW COTTON	27	552	19	15	-0.09	-0.06	3.03	6	5	1	4	0	USA 68013855	GOLDEN J SKIPPER GARY	0007GU000428	968 M	CAN 7868048	BROADVIEW TAFFY	968 M	CAN 7868048	BROADVIEW TAFFY	998
37	983	CAN 11591088	BROADVIEW CANDY 2	27	552	19	15	-0.09	-0.06	3.03	6	5	1	4	0	USA 68013855	GOLDEN J SKIPPER GARY	0007GU000428	968 M	CAN 7868048	BROADVIEW TAFFY	968 M	CAN 7868048	BROADVIEW TAFFY	998
37	983	CAN 11681878	GUERNSEY VIEW WELCOME ANSIE	31	218	22	4	0.19	-0.05	2.86	5	7	2	1	-4	USA 604312	PINE RIDGE DOUBLE L-ET	0200GU001009	1237 D	CAN 9982489	GUERNSEY VIEW STARS WELCOME	1237 D	CAN 9982489	GUERNSEY VIEW STARS WELCOME	729
40	982	CAN 11356241	MAPLEHURST LES FONEY	12	210	17	-2	0.40	0.08	2.93	5	6	3	-2	0	USA 604960	FLAMBEAU MANOR TILLER LES-ET	0001GU000428	881 M	CAN 9594219	MAPLEHURST DELTA FALCON	881 M	CAN 9594219	MAPLEHURST DELTA FALCON	1083
41	976	CAN 11553980	EBY MANOR YOG																						

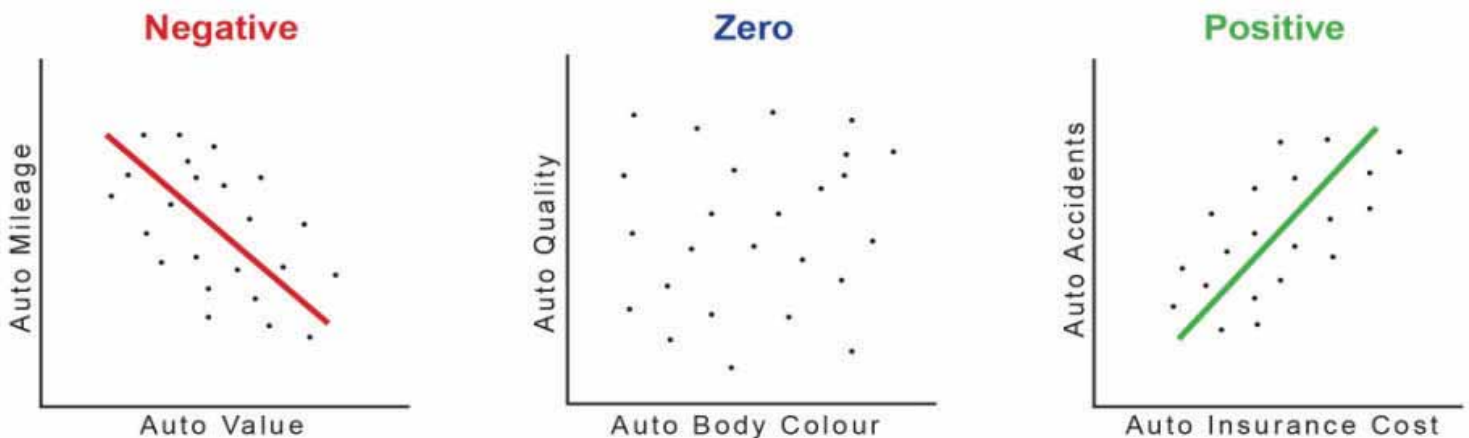
Index Weights: What You See Is Not What You Get!

Did you know traits like milk yield, Conformation, Rump and Calving Ability aren't included in the LPI? Do you feel these traits are important in your sire selection and herd improvement program and SHOULD be included in the LPI formula? Allow us to put your mind at ease - just because some traits aren't included in an index like the LPI doesn't mean you won't make progress for them when selecting for LPI. How is this possible?

Correlations Explained

Examples of correlations can be found everywhere. When a correlation between two things is positive, then as one changes, the other will change in the same direction. In the examples from the auto industry below, as accidents increase, so does the cost of insurance. When a negative correlation exists between two things, then as one increases, the other decreases, as seen below with vehicle mileage and value. In cases when there is no clear relationship between two things, the correlation will be zero, or very close to it.

Figure 1: Examples of Positive, Negative and Zero Correlation



Genetic correlations tell us how much of the genetic influence on two traits is common to both. If the correlation is above zero, this suggests that the two traits are influenced by common genes. Genetic correlations are important because if two traits are genetically correlated, selection for one will cause genetic change for the other as well, and this change could be either desirable or undesirable.

Genetic Correlations and Why They Matter

Estimated genetic correlations among traits, based on official Canadian proofs for Holstein sires, can be seen in Table 1. In this table desirable correlations that are 10% or higher are identified in green while negative correlations below 10% are labeled in red. Basically, correlations that are within 10% from zero are considered not significant. When looking at the box including production traits, it is clear to see that yields are quite highly correlated, especially milk and protein yields, but milk yield is negatively correlated to its components. The same can be seen in the quadrant showing the correlations among the five major type traits, which are all positive. In cases such as these, genetic selection for any one of these traits will also result in a positive correlated response for the others as well.

Table 1: Correlations Among Traits

Trait Name and Abbreviation		FAT	PROT	%F	%P	MR	SCS	HL	MSP	MTP	CA	DCA	DF	BCS	CONF	MS	F&L	DS	RP
Milk Yield	MILK	46%	81%	-47%	-50%	-9%	3%	5%	-10%	6%	12%	1%	-25%	-13%	15%	12%	16%	16%	5%
Fat Yield	FAT		64%	57%	17%	7%	19%	15%	0%	5%	15%	0%	-21%	-17%	22%	18%	22%	19%	9%
Protein Yield	PROT			-12%	10%	-7%	7%	11%	-7%	6%	18%	2%	-21%	-10%	17%	15%	19%	14%	5%
Fat Deviation	%F				63%	16%	16%	11%	9%	-1%	3%	0%	2%	-4%	9%	7%	7%	4%	4%
Protein Deviation	%P					5%	6%	8%	5%	-1%	6%	2%	11%	8%	1%	3%	2%	-7%	-1%
Mastitis Resistance	MR						79%	49%	-17%	-16%	9%	13%	19%	14%	19%	22%	13%	-3%	-1%
Somatic Cell Score	SCS							53%	-24%	-11%	16%	16%	13%	9%	25%	27%	18%	3%	4%
Herd Life	HL								3%	5%	22%	43%	44%	22%	43%	46%	39%	-4%	18%
Milking Speed	MSP									16%	-1%	-3%	-5%	-13%	9%	16%	-2%	-1%	-5%
Temperament	MTP										-6%	0%	2%	-3%	6%	3%	3%	7%	14%
Calving Ability	CA											31%	11%	0%	-7%	2%	4%	-25%	-16%
Daughter Calving Ability	DCA												37%	9%	12%	11%	12%	-3%	11%
Daughter Fertility	DF													25%	-10%	-5%	-7%	-26%	-1%
Body Condition Score	BCS														1%	4%	-1%	-11%	-1%
Conformation	CONF															88%	69%	65%	46%
Mammary System	MS																47%	36%	22%
Feet & Legs	F&L																	36%	23%
Dairy Strength	DS																		46%

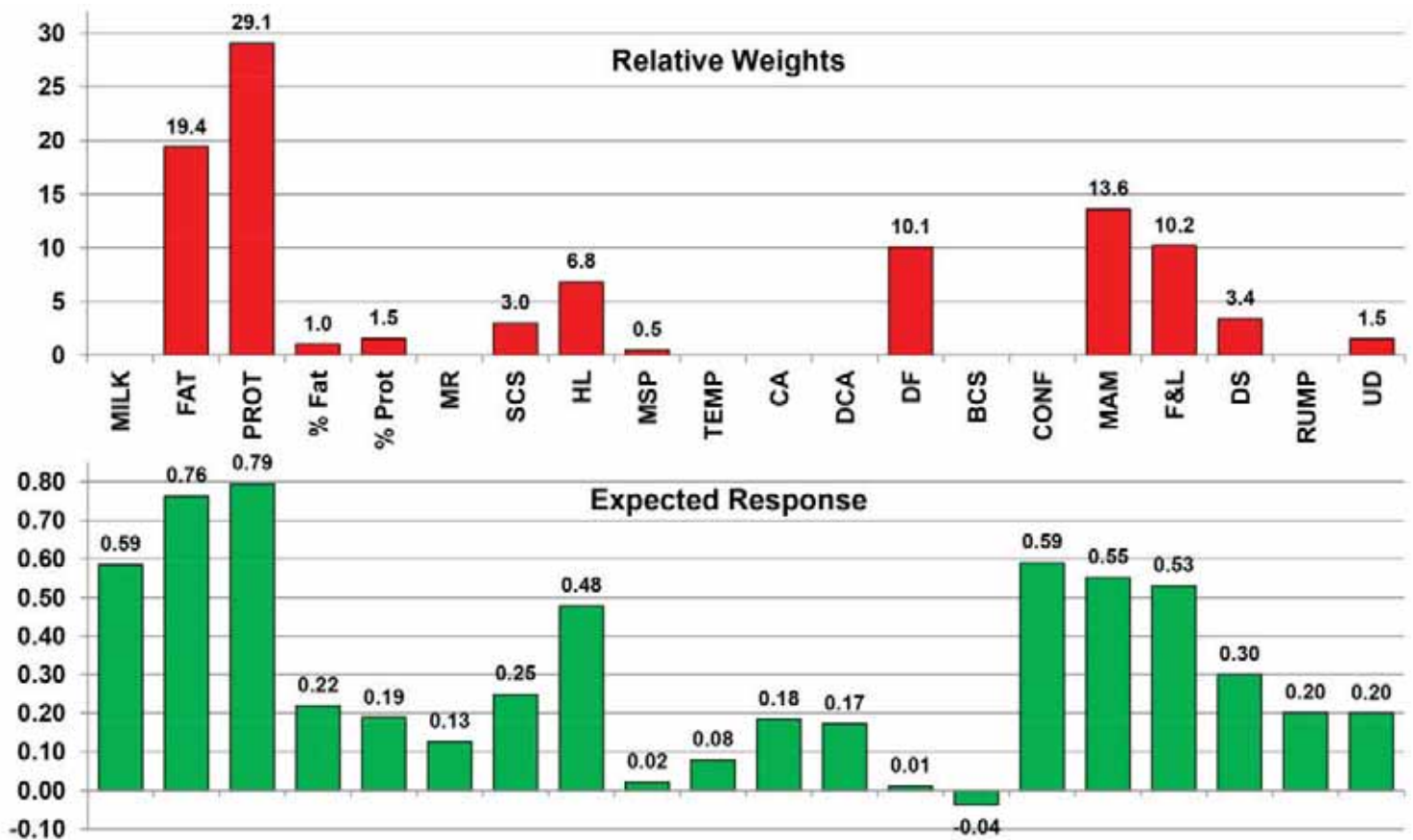
When looking down the column and across the row for Daughter Fertility (DF), you will see that it is negatively correlated with the yields of milk, fat and protein as well as overall Conformation and Dairy Strength. This antagonistic relationship between production yields and fertility is not new. Until fairly recently, dairy cattle breeding schemes in North America and worldwide focused primarily on selection for increased production yields. While great progress was made, an undesirable side effect was reduced fertility in our dairy populations. Not paying attention to the negative correlation between these two traits contributed to the reduced fertility.

Genetic evaluations for Daughter Fertility were first introduced in November 2004 and it became part of the LPI formula soon thereafter in February 2005. As a result of selection decisions based on LPI during the past decade, the downward genetic trend for Daughter Fertility has been brought to a halt while still achieving positive gains for production traits. An index like the LPI allows for simultaneous selection of important traits like production yields and Daughter Fertility such that, with appropriate weights placed on each trait, genetic progress can occur for both despite their negative genetic correlations.

Weights on Traits or Response to Selection?

The LPI is an index made up of weighted traits, with weights adding up to 100. The traits included in the current Holstein LPI formula, and the relative weight on each, are shown in the top portion of Figure 2. The bottom portion presents the response for each trait that is expected based on selection for LPI. The weights placed on the various traits included in the LPI formula don't translate directly into selection response. The reason, again, is because of correlations among traits. Even though traits like milk yield, Conformation, Rump and Calving Ability are not in the LPI formula, selection for LPI will result in progress for them.

Figure 2: LPI Relative Weights and Expected Response to Selection



Our industry spends a great deal of time focusing on which traits get included in the LPI, as well as the relative weights placed on those traits. Clearly, this has led to confusion about breed goals and where we can expect to make progress. Over the upcoming months, discussions about updating the LPI formula as well as consideration of a new profit index will continue. Going forward, extension efforts will focus on the response expected for each trait resulting from selection for an index. After all, index traits and weights look nice on paper, but the response is what will lead to true progress in your herd.

Authors: Lynsay Beavers, Industry Liaison Coordinator, CDN
 Brian Van Doormaal, General Manager, CDN

Date: October 2014

Administrator Message

Moving week at our office has arrived and even though we were made aware of the move well over a year ago, the time has come quickly. I have been fortunate to have worked the past almost 30 years at the same location. So it is with bitter sweet thoughts that I pack the Association and EastGen belongings to move to our new location. The new office space at 7660 Mill Road is beautiful and I am sure we will all adjust quickly to our new surroundings. Change is inevitable and constant so the quicker we make the change into a positive the better.

On a recent board conference call, the new young sire syndicate program was reviewed. The syndicate members have received their allotment of Lindrian Grumpy Pilot semen. For those not syndicate members, contact your Semex representative for semen. The hunt is now on for the next young sire to enter into the program. If you have possible animals for the program please contact Rob Forster.

This year at Canadian Dairy Xpo (CDX), February 4 & 5, 2015, in Stratford there will be a Guernsey cow and yearling heifer on

display on the component breeds live animal display. Please contact the office or Rob if you have animals available for the display or if you wish to volunteer to help at the show.


As you are all aware, the members at the AGM and the board voted to change our registrar to Holstein Canada. The withdrawal letter has been forwarded to CLRC giving our 1 year notice and we will be moving our affiliation as at December 31, 2015 from CLRC to Holstein Canada. Please continue to forward your registrations, transfers and memberships to CLRC for the next year.

May Peace, Joy, Hope, Health and Happiness be yours during this holiday season and throughout the New Year. Best wishes for an amazing 2015!

Season's Greetings,

Jessie
Administrator

Wishing you a Merry Christmas
and a Blessed New Year



Selkirk View Farms
Dave, Sheila, Amy & Andrew
Lindsay
3881 Rainham Rd, R R #1
Selkirk, ON, N0A 1P0

Merry Christmas!



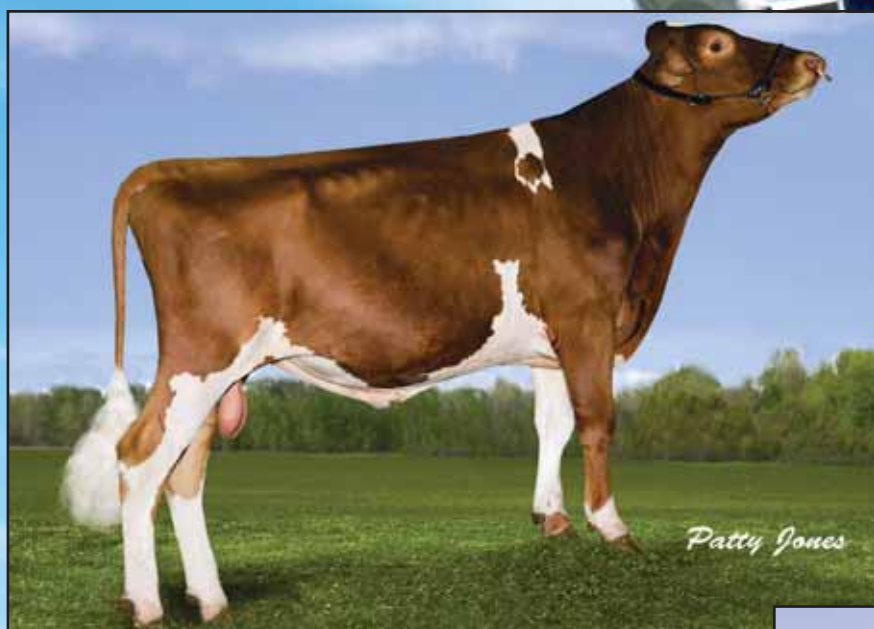
Next year give your cows a gift of a more nutritious feed, contact **Andrew Lindsay** for more details:
home: 905-776-2697
cell: 905-961-4040
email: fieldmilk@sympatico.ca

Let Pilot take flight in your herd

GUCANM11632409

0200GU00307

LINDRIAN GRUMPY PILOT



Lindrian Grumpy Pilot

GRUMPY x GARRETT x MAGICMAN

- Production, Type & Components
- A2A2 Beta Casein
- From a family of proven performers

Pilot's Dam

Lindrian Garrett Pippy 465

EX 92-2E

2277D 155340M 5.5% 8600F 3.7% 5767P LIFE

Her other offspring:

LINDRIAN PIPER BEAR ET 199 VG-87

3-4 365d 24749M 5.2% 1290F 3.9% 957P

LINDRIAN PAMPER BEAR ET 200 EX-90

4-2 305d 27728M 6.9% 1909F 4.0% 1111P proj.

LINDRIAN NEON PIPPY 78 GP-83

2-2 365d 22108M 5.0% 1105F 3.6% 791P

LINDRIAN PIPPY TWO GP-83 (By Double L)

2-1 305d 17461M 5.2% 908F 3.6% 635P

LINDRIAN GRUMPY PIPPY-ET

1-11 305d 18567M 5.6% 1041F 3.3% 613P proj.

LINDRIAN PYTHON at Semex LPI 985



Contact your local
Semex Representative
for more information


Genetics for Life®

**CANADIAN NATIONAL GUERNSEY SHOW RESULTS
SEPTEMBER 19, 2014**



Judge: Seth Johnson, USA

Junior Calf	Sponsored by: Broadview Farms, Robert & Marilyn Beynon, Richmond Hill, ON
1	Maplehurst Gary Rosetta, 11356239 Ken D Forster
2	Selkirk Python Lynette, 8540891 Selkirk View Farms
3	Guernsey View Excite's Buttercup, 11859857 Cedar Ridge Farms Ltd.
Intermediate Calf	Sponsored by: Wentworth Niagara Guernsey Club, St. Anns, ON
1	Guernsey View Wii's Amy, 11859850 Cedar Ridge Farms Ltd.
2	Maplehurst Judgment Kindra, 11356235 Ken D Forster
3	Maplehurst Skipper Hunigi, 11356236 Ken D Forster
4	Comfort Farms Shayla, 11902281 Comfort Farms Ltd.
5	Guernsey View Excess Bess, 11859854 Cedar Ridge Farms Ltd.
Senior Calf	Sponsored by: Yantzi's Feed & Seed, Tavistock, ON
1	Comfort Farms Avatar, 11902280 Comfort Farms Ltd.
2	Maplehurst Python Milkshake, 11356231 Ken D Forster
3	Selkirk Challenge Mercy, 8540886 Selkirk View Farms
4	Selkirk Magicman Yebba, 8540887 Selkirk View Farms
5	Selkirk Les Flunder, 8540888 Selkirk View Farms
Intermediate Yearling	Sponsored by: Upper Canada Cheese Company, Jordan Station, ON
1	Don Haven Cordell Vesta, 11741458 John & Scott Gordon
2	Maplehurst Spiders Mango, 11356216 Ken D Forster
3	Wee Kin Farm Yogi Saffron, Ken D Forster
4	Comfort Farms Lauren, 10996447 Comfort Farms Ltd.
5	Selkirk Magicman Luau, 8540883 Selkirk View Farms
Senior Yearling	Sponsored by: EastGen, Guelph, ON
1	Comfort Farms Sharon 2, 10996431 Comfort Farms Ltd.
2	Don Haven Achieve Vermont, 11463028 John & Scott Gordon
3	Warrindale Ninja Sonya Warrindale Farms
4	Selkirk Trombone Yetta, 8540880 Selkirk View Farms
5	Maplehurst Ninja Fabulous, 11356211 Ken D Forster
Junior Champion	Sponsored by: Terry & Glenda Beckett, Sunderland, ON
	Don Haven Cordell Vesta, 11741458 John & Scott Gordon
Reserve Junior Champion	Sponsored by: Eby Manor Farms Ltd, Waterloo, ON
	Guernsey View Wii's Amy, 11859850 Cedar Ridge Farms Ltd.
Junior Herd	Sponsored by: Conestogo Agri Systems Inc., Alma, ON
1	Ken D Forster
2	Comfort Farms Ltd.
3	Selkirk View Farms
4	Cedar Ridge Farms Ltd.
Junior Showmanship	Sponsored by: Metro Highlands Club, New Hamburg, ON
1	Eric Klassen
2	Jocelyn Forster
3	Torrin Kozman
4	Marty Dykstra
5	Elyssa Schweyer
6	Hanna Gordon
7	Ben Montgomery
8	Ian Klassen
9	Abby Cocking
10	Sarah Verhey
11	Kayla Gordon
12	Ainsley Schweyer
13	Evan Schweyer
PeeWee Showmanship	Sponsored by: Metro Highlands Club, New Hamburg, ON
	Ava Forster Will Schweyer
Dry Cow	Sponsored by: Genex, Guelph, ON
1	Maplehurst Les Marzipan, 9594210 Ken D Forster
2	Maplehurst Dynamic Laugh, 9594203 Ken D Forster
3	Running Spring Sunny, 9595848 Morris & Penny Bartlett
4	Comfort Farms Haydn, 10996408 Comfort Farms Ltd.
5	Selkirk Visa Flute, 8540868 Selkirk View Farms
2 Year Old	Sponsored by: Ken D. Forster, Lynden, ON
1	Maplehurst Les Maya, 11356193 Ken D Forster
2	Broadview Zooby, 9989553 Rob Beynon
3	Guernsey View Upton's Zenda, 11259762 Ken D Forster
4	Comfort Farms Astell, 10996419 Comfort Farms Ltd.

**CANADIAN NATIONAL GUERNSEY SHOW RESULTS
SEPTEMBER 19, 2014**

3 Year Old	Sponsored by: Dundas Animal Hospital, Dundas, ON	
1	Don Haven Yogis Vicky, 11194904	John & Scott Gordon
2	Maplehurst Les Patooty, 9594217	Ken D Forster
3	Maplehurst Judgment Rosie, 9594223	Ken D Forster
4	Broadview Yolanda, 9989536	Rob Beynon
5	Maplehurst Archie Wisdom, 9594209	Ken D Forster
6	Maplehurst Turley Patricia, 9594218	Ken D Forster
7	Comfort Farms La Shandra, 10996383	Comfort Farms Ltd.
8	Comfort Farms Miel, 10996380	Comfort Farms Ltd.
9	Selkirk Challenge Miss Molly, 8540867	Selkirk View Farms
4 Year Old	Sponsored by: W S Feed & Supplies, Conestogo, ON	
1	Maplehurst Mentor Virtue, 9594195	Ken D Forster
2	Maplehurst Les Bette, 9594205	Ken D Forster
3	Comfort Farms Megan, 10996370	Comfort Farms Ltd.
4	Selkirk Spider Marcy, 8540860	Selkirk View Farms
5	Comfort Farms Lyndsay, 10996367	Comfort Farms Ltd.
5 Year Old	Sponsored by: Floradale Feed Mill Ltd, Floradale, ON	
1	Broadview Unity, 9648349	Rob Beynon
2	Broadview Umma, 9648347	Rob Beynon
3	Broadview Tulip 2, 7868072	Rob Beynon
4	Running Spring Sundance, 9595861	Morris & Penny Bartlett
5	Don Haven Warden Venus, 7776244	John & Scott Gordon
6	Maplehurst Bolero Whiskey, 7433738	Ken D Forster
7	Comfort Farms Ava, 9598038	Comfort Farms Ltd.
Breeder's Herd	Sponsored by: Select Sires Generations, Kemptville, ON	
1	Rob Beynon	
2	Ken D Forster	
3	John & Scott Gordon	
4	Comfort Farms Ltd.	
5	Cedar Ridge Farms Ltd.	
6	Selkirk View Farms	
Progeny of Dam	Sponsored by: RKD Web Studios, Guelph, ON	
1	Broadview Petunia 2, 8280395	Rob Beynon
2	Maplehurst Turleys Marissa, 7433708	Ken D Forster
3	Running Spring Sunlight, 8638188	Morris & Penny Bartlett
4	Selkirk Tiller Meadowlark, 8540838	Selkirk View Farms
5	Don Haven Showtime Vesta, 9827891	John & Scott Gordon
Premier Exhibitor	Sponsored by: Bill Luff, Guernsey Island	
	Ken D Forster	
Premier Breeder	Sponsored by: Bill Luff, Guernsey Island	
	Ken D Forster	
Grand Champion Female	Sponsored by: Quality Seeds Ltd., Woodbridge, ON	
	Broadview Unity, 9648349	Rob Beynon
Reserve Grand Champion	Sponsored by: Bruce & Sherry Telfer, Paris, ON	
	Broadview Umma, 9648347	Rob Beynon
Honourable Mention	Don Haven Yogis Vicky, 11194904	John & Scott Gordon
CanWest DHI Award	Sponsored by: CanWest DHI, Guelph, ON	
	Maplehurst Les Marzipan, 9594210	Ken D Forster
Herdsmen Award	Sponsored by: Ken & Marie McNabb, New Hamburg, ON	
	Selkirk View Farms	

EXHIBITOR'S BREAKFAST

Sponsored by: Rob Forster (Guernsey Fieldman), Lynden, ON

EXHIBITOR'S LUNCH

Sponsored by: Genex Canada, Guelph, ON

Sweepstake Certificates

Sponsored by: EastGen, Guelph, ON

Thank you to all our sponsors!

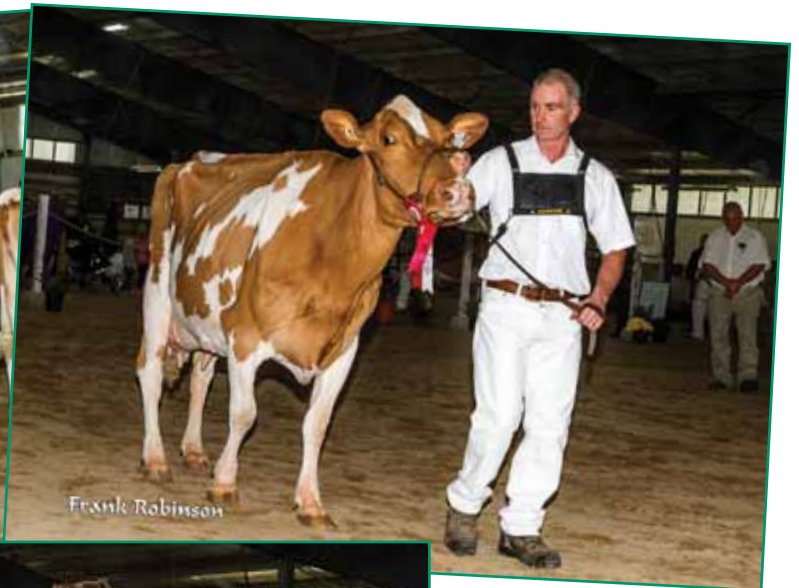
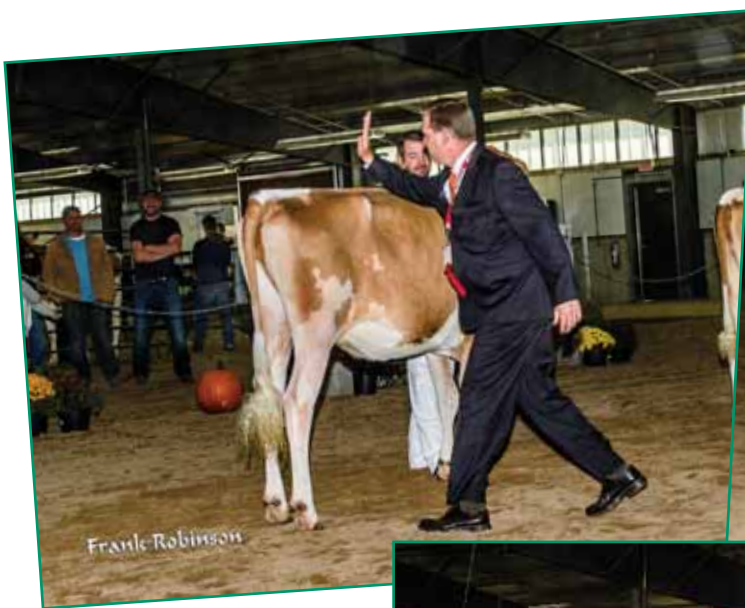
National Show Recap - Judge Seth Johnson

It was a true pleasure to place the 2014 Canadian National Guernsey Show in Ancaster, Ontario. The quality of the show was, as expected, excellent. This was my first chance to see the “new” Ancaster Fairgrounds. You are certainly lucky to have such a great facility hosting your show! I truly enjoyed working with the Guernsey youth in the showmanship classes. It is great to see so many young people participating in the breed.

Junior Champion selection came down to two very different but equally impressive heifers. I admired the width of front end and perfectly straight topline on the Intermediate Yearling heifer and made her Junior Champion. She was closely followed by the wonderful Intermediate Calf. To lapse out of official judging terminology, this calf was simply a beautiful calf from head to tail with tons of eye appeal. Her long neck, balance and stunning bone quality was hard to miss. But, the winner showed more width throughout and appeared stronger through the loin. The Intermediate Calf’s advantage in dairy quality and depth of rear rib made it a very close placing.

I was especially pleased to see that several of the cow classes boasted the largest numbers of the show. The 2-Year-Old and Aged Cow classes really stood out for me. The winning pair in the 2-Year-Old class was the most difficult placing of the day. A young cow built for the long haul beat a more mature cow with the most extreme rib and rear udder in the show. The Aged Cow class had a fantastic trio in the top group. My Grand Champion and Reserve came from this class. The winner used her beautifully balanced dairy frame with a superb udder to win the class. Further, she used her advantage in length, angularity and overall bloom to edge out the Reserve Grand Champion who was taller and wider with stronger pasterns. Both Aged Cows had the advantage in strength of loin and rump structure over the 3-Year-Old that was Honorable Mention Champion. However, she in turn excelled over the other finalists with her dairy quality and open rib.

Seth Johnson



Rockton World's Fair Results

13-Oct-14

Judge: Richard Osborne

Senior Heifer

- | | |
|-------------------------------|---------------|
| 1 Maplehurst Python Milkshake | Ken Forster |
| 2 Maplehurst Gary Rosetta | Ken Forster |
| 3 Maplehurst Judgment Kindra | Ken Forster |
| 4 Comfort Farms Avatar | Comfort Farms |
| 5 Comfort Farms Shayla | Comfort Farms |

Summer Yearling

- | | |
|-----------------------------|---------------|
| 1 Wee Kin Farm Yogi Saffron | Ken Forster |
| 2 Comfort Farms Alexandra | Comfort Farms |

Junior Yearling

- | | |
|---------------------------|---------------------|
| 1 Don Haven Cordell Vesta | John & Scott Gordon |
| 2 Maplehurst Spider Mango | Ken Forster |
| 3 Comfort Farms Lauren | Comfort Farms |

Senior Yearling

- | | |
|-----------------------------|---------------------|
| 1 Don Haven Achieve Vermont | John & Scott Gordon |
| 2 Comfort Farms Sharon | Comfort Farms |
| 3 Maplehurst Ninja Fabulous | Ken Forster |

Junior Champion Don Haven Cordell Vesta John & Scott Gordon

Res. Junior Champion Maplehurst Python Milkshake Ken Forster

Junior Herd

- 1 Ken Forster
- 2 Comfort Farms

2 Year Old

- | | |
|-------------------------------|---------------------|
| 1 Maplehurst Les Maya | Ken Forster |
| 2 Don Haven Yogi Virginia | John & Scott Gordon |
| 3 Guernsey View Upton's Zenda | Rob Forster |

3 Year Old

- | | |
|-----------------------------|---------------------|
| 1 Don Haven Yogi Vicky | John & Scott Gordon |
| 2 Maplehurst Archie Wisdom | Ken Forster |
| 3 Maplehurst Les Patooty | Ken Forster |
| 4 Maplehurst Judgment Rosie | Ken Forster |

4 Year Old

- | | |
|-----------------------------|---------------------|
| 1 Maplehurst Mentor Virtue | Ken Forster |
| 2 Maplehurst Les Bette | Ken Forster |
| 3 Maplehurst Dynamoc Laugh | Ken Forster |
| 4 Don Haven Legion Victoria | John & Scott Gordon |

5 Year Old

- | | |
|-------------------------------|-------------|
| 1 Maplehurst Blue Spruce Kind | Ken Forster |
|-------------------------------|-------------|

Mature Cow

- | | |
|-------------------------------|---------------------|
| 1 Don Haven Warden Venus | John & Scott Gordon |
| 2 Maplehurst Bolero Whiskey | Ken Forster |
| 3 Don Haven Power Viola | John & Scott Gordon |
| 4 Maplehurst Decision Ophelia | Ken Forster |

Breeders Herd

- 1 Ken Forster
- 2 John & Scott Gordon
- 3 Comfort Farms

Grand Champion Don Haven Yogi Vicky John \Scott Gordon
Res. Grand Champion Maplehurst Archie Wisdom Ken Forster

Merry Christmas Guernsey Breeders

