

# GUERNSEY NEWS

SEPTEMBER 2009



PHOTO COURTESY OF : CEDAR RIDGE FARMS, KESWICK RIDGE, NB

## **Administration Office**

**5653 Hwy 6 N  
Guelph, ON  
N1H 6J2**

**Email : [info@guernseycanada.ca](mailto:info@guernseycanada.ca)  
Phone: 519-836-2141  
Fax : 519-763-6582**

## **Fieldman**

**Rob Forster**

**Email: [rforster@guernseycanada.ca](mailto:rforster@guernseycanada.ca)  
Phone: 905-648-9640**

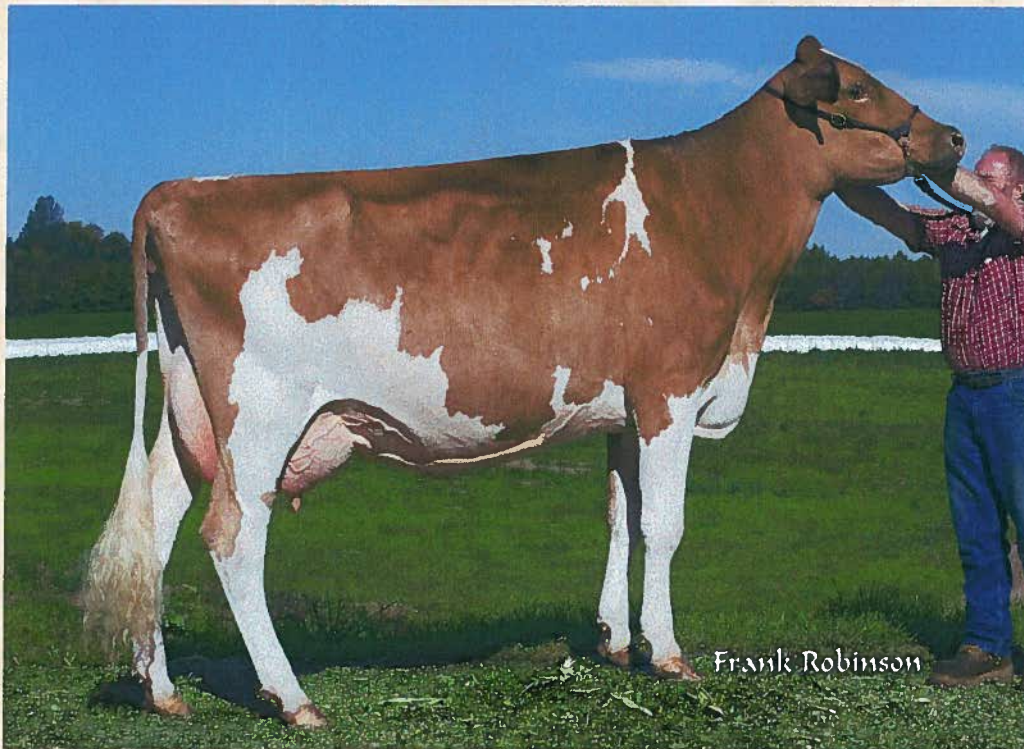


# **CANADIAN NATIONAL GUERNSEY SHOW 2009**

**SEPTEMBER 25, 2009**

**10:00 A.M.  
ANCASTER FAIR GROUNDS  
630 TRINITY RD, JERSEYVILLE, ON**

**Judge: Murray Reissner, Gencor, Guelph, ON**



**MAPLEHURST TILLER HUNIBUN**

**GRAND CHAMPION 2008**



## **2010 World Guernsey Conference**

We are including the program for the conference as supplied by Bill Luff , the program is posted on the Canadian Guernsey website link to the conference.

It is time to think about writing an introduction to your farm. This is for all the farms included in the tours for the conference as well as being optional for all other Guernsey enthusiasts. We would like to put a couple of farms on the website every month to wet the curiosity of the potential conference participants. We have received two of the write ups and are looking forward to having more as soon as possible. These will all go into a booklet for the participants at the conference. All pictures are welcome and we would love to have a family picture as well as farm and cow pictures. So get snapping!!

Sponsorship is moving along, and all 80 packages have been distributed with more being asked for. So far we have commitments from: RLB Accountants, Milverton Vet Clinic, Halwell Mutual Company, Yantzi's Feed Mill, Shurgain, Semex and Dairy Farmers of Ontario. With a total commitment over \$3,500. Please contact anyone you have approached for sponsorship. Follow-up is required and if you could please provide the name of your contact to Marie if you are unable to do so.

We are continuing to look for auction items. Small and large items are being solicited. Please keep in mind that our guests will need to pack these items for travel. If you find anything or have something that you would like to donate that is let unique to Guernseys please let us know!

We have a lot of folks interested in the conference and tours with comments coming in . Thank you to Jim & Ruth Eby for taking our message to the American Guernsey Breeders at the American convention in Texas this July.

If anyone has any questions, please do not hesitate to call and we are always open to suggestions and ideas!

Marie McNabb, 2010 WGC Coordinator.



**DRAFT**

## 13th WORLD GUERNSEY CATTLE FEDERATION CONFERENCE

### CONFERENCE PROGRAMME

#### **Tuesday 13th July**

Delegates arrive at Conference Venue

Registration desk opens

3.00 pm WGCF Executive Board Meeting

5.30 pm Speakers Briefing

7.15 pm President's Reception

#### **Wednesday 14th July**

8:00 am Directors Meeting

9.15 am Official Opening of Conference

9.30 am Presidential Address by WGCF President, John Gordon

9.45 am Opening Address by the Conference Moderator, Neil Petreny, General Manager of CanWest DHI

10:00 am Refreshment Break

10.30 am Keith Woodford– Professor of Farm Management and Agribusiness at Lincoln University New Zealand author of “Devil in the Milk” will discuss the significance Of A2 Milk

12.00 noon Lunch

1.30 pm Dr. Andrew Casebow, Environmentalist, will consider the impact of climate change on the World around us with particular reference to agriculture and dairy farming.

2:30 pm Country Reports

3:30 pm Refreshment Break

4:00 pm Country Reports continue

4:25 pm Dr Maurice Bichard, WGCF Consultant Geneticist will outline areas of global importance of The future of breed development.

5:10 pm Conclusion by Moderator

Evening Dinner, Auction and entertainment at farm

## **Thursday 15th July**

7.15am	Directors breakfast
9.00 am	WGCF Secretary's Report
9.20 am	Flavio Schenkel—Associate Professor GCIL University of Guelph will examine the importance of genetic diversity in farm animals with particular reverence to the Guernsey.
10.40 am	Refreshment break
11.00am	Curt Van Tassel—Research Geneticist USDA Bovine Functional Genomics Laboratory will explain the latest developments in Genomic selection and its future application within the Guernsey breed.
12.30 pm	Lunch
1.45 pm	Dr. Jan Philipsson— Secretary of Interbull will speak on current topics of importance to dairy farmers.
2:30 pm	Workshops 1) Environment—Andrew Casebow 2) Genomic Evaluations—Curt Van Tassel 3) The future of A2 milk—Keith Woodford (Refreshment break served within workshops)
4:45 pm	Workshop Reports
5.30 pm	Conclusion by Moderator
Evening	Buffet Banquet

## **Friday 16th July**

7:15	Optional Directors Breakfast
9.15 am	WGCF Directors Report
9.45 am	Dr. Brian Van Doormaal—General Manager Canadian Dairy Network will discuss issues concerning the global collection and use of conformation, production and health data in the genetic improvement of dairy cattle.
11.15 am	Refreshment break
11:45 pm	Conference Summary by Moderator
12.15 pm	2010 Host Country Presentation
12.45 pm	Closing Address by incoming President
1.00 pm	Conference closes and Lunch





## 2009 Canadian Guernsey Advertising Rates

*Get your ads ready for the 2009 December Journal Issue!*

---

### 2009 GUERNSEY JOURNAL

The Canadian Guernsey Journal is produced once a year in December.  
Submit your ad information and pictures to the Administration office by:

**November 13, 2009**

#### Journal Advertising Rates

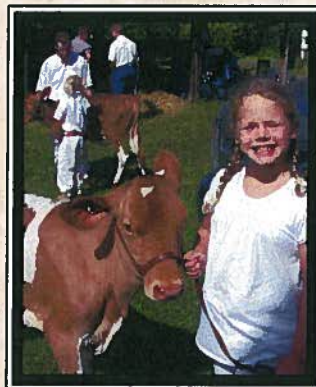
Size	Member Rate	Non Member Rate
Full Page	\$240	\$420
½ page	\$150	\$240
1/3 page	\$120	\$180
¼ page	\$100	\$150
Front Cover	\$360	n/a

**All advertisements in the Journal are in full colour.**

---

**Canadian Guernsey Association**  
5653 Hwy 6 N, RR 5  
Guelph, ON N1H 6J2

**Email: [info@guernseycanada.ca](mailto:info@guernseycanada.ca)**  
**Phone: 519-836-2141**  
**Fax : 519-763-6582**



Photos courtesy of Don Haven Farms—2008 National Show



## For the love of the Guernsey breed

SHARPSVILLE, Pa. — Although every dairy farm is unique, some may consider Ealy's Highland Farm in Mercer County, Pa., to be even more out of the ordinary.

Until about four years ago, Dan and Sherry Ealy were milking Holsteins. Today, their 88-cow herd consists of about 25 percent pure Guernseys, with the rest of the cows either a cross of Guernsey and Holstein, or grade Holsteins.

Confused? You're not the only one.

"A lot of people think we're crazy," admitted Sherry Ealy.

"But the more we go along with this idea, the more confirmation we get — like this is what we're supposed to be doing."

### Background

To understand their decision to transition to another breed, the couple said **it's important to note that they both grew up with Guernseys.**

Sherry's mother and stepfather milked Guernsey cows, and Sherry can still remember showing the grand champion Guernsey at the Mercer County Roundup.

The Highland Farm, which has been in Dan's family since 1898, was home to Guernsey cattle, too.

Harold, Dan's father, decided to transition to Holsteins when he wanted to expand the herd with Dan's sister and brother-in-law in 1991.

Part of the reason for the switch back then, said Harold, was because Guernseys were hard to find in the area and Holsteins were more readily available.

Dan returned to the farm after he graduated college in 1996, and Sherry became an essential part of the operation when they married in 1998.

The next 10 years brought four children — Dalan, Christa, Conner and Renee — to Dan and Sherry, and a growing sense that a change was needed to the way they were dairying.

Dan and Sherry had purchased the cows and equipment from Harold in 2004 and today continue to rent the land and buildings. Although they continued to help part-time until 2005, Dan's sister and her husband decided to move off the farm in 1999, enabling Dan, Sherry and their children to move into the farm house.

With the increasing daily challenges of being a dairy farmer, Sherry came to a life-changing realization shortly after they purchased the cows from her father-in-law.

"If you're going to farm and you don't love it, you better change what you're doing," she said.

For the Ealys, that change was going back to Guernseys.

"We just thought that there must have been a reason why God brought two Guernsey breeders together," Sherry said.



## **Transitioning**

The Ealys purchased a herd of about 40 Guernsey cows, yearlings and calves in October 2004 to begin the switch. The herd came from Bill and Janis Budner and their son George in Daisytown, Pa. Sherry said she and Dan were touched by the kindness and encouragement of the Budner family.

“They gave our kids rope and show halters and feed tubs, and they asked if they could purchase lifetime membership to the [American Guernsey Association](#) for each of the kids,” she said. “It was just so cool for them to believe in us like that.”

Although some of the animals adapted well, others didn't, which is common in many transitions. Only three animals from that original herd of 40 remain at the Ealys today, but they were able to keep the quality genetics through some decedents.

Sherry said it was difficult to find Guernseys that were raised in a freestall operation, so the next step was cross-breeding.

“We know it's going to take us a lot longer to get where we want to be, but it's easier to manage our finances this way,” Sherry said.

Their goal in their breeding program is to keep the width, strength and correctness in feet and legs of the Holsteins while maximizing the dairyness of Guernseys. They hope to be 100 percent Guernsey within 10 years.

The couple believes a Guernsey milking 14,000 pounds of milk is just as profitable as a Holstein milking 20,000 pounds of milk because it takes less feed for the Guernsey to produce that amount than the Holstein.

“Right now, we're feeding for 10 less cows than we actually have,” Dan said.

Since beginning to transition, the Ealys have noticed some improvements in the herd.

The Guernsey-Holstein crosses have a lower somatic cell count, better calving ease and a lower cull rate than the Holsteins. The purebred Guernseys seem to be more tolerant to the heat than the crosses and the Holsteins.

## **Commercial vs. show cow**

The Ealys look forward to continue showing their Guernseys and would eventually like to market them, but they know milk production and longevity needs to be just as important as type.

“I agree with those who say there's a bridge between commercial cows and show cows,” Sherry said.

The Ealys said selecting the genetics and deciding which bulls to mate with certain cows has been a bonding experience for them.

“I've learned how to read proofs and about the aAa program,” Sherry said. “It's definitely fun for me and it's been a marriage builder.”

“There's something really satisfying about being the breeder of your animals,” added Dan.

## Passing the torch

The Ealys hope their four children will develop a fondness for the breed in the same way that they got the Guernsey bug from their parents, and they believe a big part of that interest comes from developing connections with other Guernsey breeders.

Their oldest, 9-year-old Dalan, has been showing his 4-H calves and participating at the state Guernsey convention, and the family is looking forward to September, when they will travel to Harrisburg for the [All-American Dairy Show](#).

## Big dreams

The Ealys are hopeful their show days won't stop at the All-American. Some day, they hope to take animals to the [World Dairy Expo](#) in Wisconsin.

They would also love to sell animals at the Blue Halter Sale in Bedford County and other well-known Guernsey sales around the area.

And Sherry hopes that some of her children, if not all four, remain involved in the dairy industry.

"If in 20 years, we're still milking Guernseys, one of the kids is running a processing plant, and we're putting our grandkids through 4-H, I'd be pretty content," she said.

By Emily Caldwell

As posted in the Farm and Dairy news August 13, 2009

For the love of the Guernsey breed



### PLEASE READ!

In our June Newsletter we asked for your updated information to help us improve our Members Directory. We received very few responses and would like to ask you to please forward the information to the Administration office as soon as possible. The deadline has been extended to: October 16, 2009

Email: [info@guernseycanada.ca](mailto:info@guernseycanada.ca)

Mail: 5653 Hwy 6 N, Guelph, On N1H 6J2

NAME \_\_\_\_\_  
FARM NAME \_\_\_\_\_  
ADDRESS \_\_\_\_\_  
\_\_\_\_\_  
( if you are a R R # please include fire number)  
PHONE NUMBER(S) \_\_\_\_\_  
FAX NUMBER \_\_\_\_\_  
EMAIL \_\_\_\_\_

TOTAL MILKING GUERNSEYS \_\_\_\_\_  
TOTAL GUERNSEYS \_\_\_\_\_



## 2009 PHOTO CONTEST

We are looking for a wide selection of photos that show Guernsey cattle and where they fit into your lives—candid shots that show the great Guernsey Character. The winner of the contest will have their picture profiled on the cover of the December Journal along with a framed picture given out at the Annual Meeting.

### Rules

1. To enter, complete the form below.
2. Entries must be received at the Canadian Guernsey office by November 13, 2009.
3. Submit a CD with your pictures to the office or email to the Administration office as a jpg file attachment.
4. By either signing the form below or by submitting the email, the photographer grants the Canadian Guernsey Association and the Guernsey Cattle Breeders' Association the unrestricted rights to use the photograph(s) for any purpose, including, but not limited to publishing your photograph(s) in print or electronic form, to use the pictures for promotional purposes without compensation, and the right to use the photographers name in a credit along with the photograph. You hereby confirm that you are the photographer and that you own all rights to any photograph(s) which you entered in this contest; accordingly, you hereby agree to compensate the Guernsey Association fully regarding any claims arising out of the use of your photograph(s).
5. By signing the entry form below, or by identifying yourself in the email, the photographer consents to the entry of his or her submission and agrees to abide by the contest rules.

### 2009 GUERNSEY PHOTO CONTEST

\_\_\_\_\_  
Photographer's name

\_\_\_\_\_  
Address

\_\_\_\_\_  
Town, Province

\_\_\_\_\_  
Postal Code

\_\_\_\_\_  
Signature of photographer—your signature confirms your acceptance and compliance with all the contest rules.

SEND TO : Canadian Guernsey Association, 5653 Hwy 6 N. RR #5, Guelph, ON N1H 6J

CD Enclosed

## REMINDER



1. **4-H Awards-** Get your 4-H Awards forms in before your Banquet night!  
(form on our [www.guernseycanada.ca](http://www.guernseycanada.ca) website)
2. **Directory Information-** Update your information refer to the enclosed information sheet in this newsletter. Deadline : October 16, 2009
3. **Journal Ads**—Deadline for this years Journal Ads : Deadline: November 13, 2009
4. **Photo Contest**—Send in your Photos for an opportunity to be on the December Journal Cover! Deadline: November 13, 2009



## Fieldman Report – Summer 2009

The above heading could be a little misleading. Did summer really ever arrive?

Well, in the Guernsey world it did and how! The American Convention sale held on July 12 produced a new record high of \$59000. That final bid was for Moziers Lux Anne of Lavon Farms who has a long list of accomplishments including All-American Sr. 2yr old in 2006 and Sr. 3yr old in 2007. She was also Grand Champion at NGS Louisville in 2007 and sold with a bull contract to Select Sires. The sale averaged \$5003 on 30 lots and choices and \$435 on 65 embryos. There was also Canadian content in this sale as well. A choice of Coulee Crest Skipper daughters from Maplehurst Keanes Morag EX91-2X sold for \$3600 and her Skipper embryos brought \$525. Eby Manor consigned embryos from Eby Manor Garrett Wayward EX92@ 10yr from Skipper that sold for \$575. A Magicman daughter from Eby Manor W Starbrite also sold for \$3000. Canadian Guernsey genetics continues to be a contributor to the large sales south of the border. I am also aware that there are Canadian breeders that joined a syndicate for a Spider son (Skippers full brother) from Dix Lee Tiller Joke who was the top seller at the 2007 American Convention Sale.

Maplehurst Lewis Brea, Guernsey View Kit's Ruby and Guernsey View Kit's Sarah are the top 3 cows on the August LPI listing. Congratulations goes out to the Gordon's of Keswick Ridge, NB for being the proud owner of all these animals.

The National Show is just around the corner! It will be located at a brand new facility with everything under one roof. Initial straw will be provided so be sure to use that extra room to bring an extra animal or two. In my travels this summer I have seen some outstanding cattle that are good prospects to be shown. Even if you are not able to participate in the ring, attend as a spectator to see what the Guernsey breed has to offer and visit with other Guernsey enthusiasts. I hope to see you on September 25<sup>th</sup> for this outstanding parade of Guernseys. Directions can be found on the Ancaster Fair website [www.ancasterfair.ca](http://www.ancasterfair.ca).

Since I have become your fieldman, I have done my best to keep you up to date of all aspects of the Guernsey breed through this newsletter and the information highway also known as the internet. Thus, it is important to the office informed of your contact information if you wish to receive news over the internet or through his newsletter. The internet has become an important tool not only for keeping you informed but for marketing as well. The Canadian Guernsey breeders need to step up to the plate and let everyone know that we have a marketable commodity. The Canadian Guernsey Journal is scheduled to be produced and released before Christmas. This magazine can only maintain its high quality with input from you. Be sure to submit your ad to boast about your Golden Girls.

Submitted by:

Rob Forster  
Canadian Guernsey Fieldman  
[rforster@guernseycanada.ca](mailto:rforster@guernseycanada.ca)  
905-648-9640



## EMBRYOS FOR SALE

Name	Reg #	Score	# Embryos	Sire	Reg #	Milk 305D	%Fat	%Prot	Comments
Marshdene Nobil Mary	10033505	VG-85 (82/86)	7	Sniders Loral Archie	604762	8700	4.9	3.5	Maternal sister-- Marshdene Magic Mary Total Performance Cow @ WDE 2X Followed by 3 generation EX
Ivera Billy Rosa	10033074	EX-80 (92/88)	4	Sniders Option Aaron	604670	10931	4.8	3.5	Proven track record Dam of HM All American summer yearling 2006 5 generations VG or EX
Big Spring Garrett Wayward	10032724	EX-92 (93/91)	14	Coulee Crest Luxury Skipper	604230	8198	4.8	3.4	5X EX raised to 92@ 10yr 3 mo Longevity

CALL ROB FORSTER FOR MORE INFORMATION -905-648-9640

## SEMEN FOR SALE

7 DOSES OF ROYALTY

Contact: Randy Eby Email: ebybrook@wightman.ca

## COMING EVENTS

September 15—Canada's Outdoor Farm Show—Woodstock , ON

September 22—International Plowing Match—New Liskeard, ON

September 25—National Guernsey Show—10:00 AM—Ancaster Fairgrounds, Jerseyville, ON

September 29— World Dairy Expo—Madison WI USA

October 23- Wentworth Niagara Guernsey Club— Annual Banquet & Dance -7 pm -Kolher Agricultural Hall  
Cost \$20/adult \$8/child under 5 free . Music by: "Country Ramblers"

Address: 1084 Kohler Rd (Cty Rd 8) Haldimand. 905-772-3265

For tickets call: Amy Lindsay - 905-776-2697 or Morris Bartlett - 905-765-3893

November 6- Royal Winter Fair

**August 11, 2009**

**Ohio State Fair Guernsey Show Results**

August 9, 2009

Columbus, Ohio

Judge: Bill Wachtel, Ohio

Number Shown: 120

Junior Champion: R-Way Aaron Flirt, R-Way Guernseys, Southington, OH  
Reserve Junior Champion: Mona Lous Levi Misty, Whispering Pines Farm, New Concord, OH

Grand Champion: Spring River Royal Happy, Land of Living Farm, Mechanicsburg, OH

Reserve Grand Champion: Quality Quest Mentor Prize, Ralph & Martha Turley, Orient, OH

Spring Calf (13)

1. Mona Lous Visa Jay, Mandy Brause, Carey, OH; 2. Balmoral Fame Star, Balmoral Farm, Wapakoneta, OH; 3. Mona Lous Tiller Melinda, Don Eberhard Family, Mechanicsburg, OH

Winter Calf (11)

1. R-Way Aaron Flirt, R-Way Guernseys, Southington, OH; 2. Mona Lous Levi Misty, Whispering Pines Farm, New Concord, OH; 3. Mona Lous Altanic Kimmy, Tom Derr, Carey, OH

Fall Calf (14)

1. R-Way Neon Trina, R-Way Guernseys, Southington, OH; 2. Sunrise Hercules Melanie, Don Eberhard Family, Mechanicsburg, OH; 3. Mar Ral Director Misty, Ralph Turley, Orient, OH

Summer Yearling (10)

1. Aldens Silverado Reason, Alden Farms, Danville, OH; 2. Davidson Jetstar Libby Lola, Justin Davidson, Hillsboro, OH; 3. Rae Mar Showtime Finale, Cameron Parker, London, OH

Spring Yearling (8)

1. GR- OH Golden Rae Marquis Honey, Levi Plocher, Salem, OH; 2. Creekwood Farms L Muffy, Don Eberhard Family, Mechanicsburg, OH; 3. Shannon Mission Marrah, Triple J Guernseys, Salem, OH

Winter Yearling (7)

1. Balmoral Skipper Loralie, Balmoral Farm, Wapokoneta, OH; 2. Marodore Missions Yeah, Marodore Farm, Balitmore, OH; 3. Marodore Tillers Lamb, Marodore Farm, Baltimore

Fall Yearling (8)

1. Village Vieux Tiller Lucy, Balmoral Farm, Wapokoneta, OH; 2. Gill Farm Turley Ginger, Gill Farms, Creston, OH; 3. R-Way Neon Sami, R-Way Guernseys, Southington, OH

Junior Best Three (11)

1. R-Way Guernseys, Southington, OH; 2. Tom Derr, Carey, OH; 3. Balmoral Farm, Wapokoneta, OH

Futurity (16)

1. Mar L Lesters Jasmine, Land of Living Farm, Mechanicsburg, OH; 2. Land Of Living PJ Jam ET, Land of Living Farm, Mechanicsburg, OH; 3. Land Of Living P Jiffy ET, Land of Living Farm, Mechanicsburg, OH

Junior 2-Year-Old (6)

1. Whispering Pines Lewis Jenny, Whispering Pines Farms, New Concord, OH; 2. Ayars Manion Sho Snow, Land of Living Farm, Mechanicsburg, OH; 3. Dales G Lewis Misty, Dale Langenkamp Family, New Weston, OH

Senior 2-Year-Old (16)

1. Land Of Living PJ Jam ET, Land of Living Farm, Mechanicsburg, OH; 2. Land Of Living P Jiffy ET, Land of Living Farm, Mechanicsburg, OH; 3. Land Of Living D Glossy ET, Land Of Living P Jiffy ET, Land of Living Farm, Mechanicsburg, OH

Junior 3-Year-Old (6)

1. Brand Jam Perfect Liberty, Jay Thomas Family, West Liberty, OH; 2. Balmorals Khan Scarlet, Balmoral Farm, Wapokoneta, OH; 3. Whispering Pines Khans Lois, Whispering Pines Farm, New Concord, OH



Senior 3-Year-Old (7)

1. Quality Quest Mentor Prize, Ralph Turley, Orient, OH; 2. Mona Lous Mastercard Star, Mandy Brause, Carey, OH; 3. Balmorals Khan Sheen, Balmoral Farm, Wapakoneta, OH

4-Year-Old (5)

1. Land Of Living Ace Lizzie ET, Land of Living Farm, Mechanicsburg, OH; 2. 1. Land Of Living JT Rockette ET, Land of Living Farm, Mechanicsburg, OH; 3. Dales G Denny Poppy, Dale Langenkamp, New Weston, OH

5-Years and Over (8)

1. Spring River Royal Happy, Land of Living Farm, Mechanicsburg, OH; 2. Brand Jam MM Laura, Jay Thomas Family, West Liberty, OH; 3. Balmorals S Sloopy, Balmoral Farm, Wapakoneta, OH  
Produce of Dam (5)

1. Land Of Living Farm, Mechanicsburg, OH; 2. Balmoral Farm, Wapakoneta, OH; 3. Balmoral Farm, Wapakoneta, OH

Dam & Daughter (11)

1. Balmoral Farm, Wapakoneta, OH; 2. Jay Thomas Family, West Liberty, OH; 3. Land Of Living Farm, Mechanicsburg, OH

Senior Best Three (8)

1. Land Of Living Farm, Mechanicsburg, OH; 2. Tom Derr, Carey, OH; 3. Balmoral Farm, Wapakoneta, OH

Exhibitors Herd (8)

1. Land Of Living Farm, Mechanicsburg, OH; 2. Tom Derr, Carey, OH; 3. Whispering Pines Farm, New Concord, OH

Premier Breeder & Exhibitor: Land Of Living Farm, Mechanicsburg, OH

**PRODUCTION RECORDS**

Records completed Jan 2009-Aug 2009

These records are the top 25 ranked according to Composite BCA

Rank	Yearlings	REGISTRATION	NAME	Purity	Class	Calving Year	Dim	Milk	Fat	%F	Prot	%P	BCA Milk	BCA Fat	BCA Prot	Total BCA	OWNER	CITY	PROV	
1		GUCANF7679997	BIG SPRING LANE JULIE	75	G	78	1	335	7742	313	4	252	3.2	273	224	250	747	BIG SPRING FARMS LTD	KITCHENER	ON
2		GUCANF8860673	EBY MANOR ANGELO DANIELLE	87	GP	83	1	360	6601	331	5	234	3.5	238	236	236	710	EBY MANOR LTD	WATERLOO	ON
3		GUCANF8860671	EBY MANOR LANE DEMI	PB	VG	85	1	292	6220	301	4.8	217	3.5	224	215	219	658	EBY MANOR LTD	WATERLOO	ON
4		GUCANF7680006	BIG SPRING DECISION WANDA	PB	GP	82	1	438	5635	246	4.4	195	3.5	208	185	203	596	BIG SPRING FARMS LTD	KITCHENER	ON
5		GUCANF7717990	SUN SET TILLER FANNY	PB	G	77	1	306	6011	230	3.8	187	3.1	223	170	195	588	ROBERT ASHTON	PORT PERRY	ON
6		GUCANF8863197	BLACKHOME T L WILLOW	PB	GP	83	1	345	4999	257	5.1	173	3.5	179	186	173	538	ALAN A BLACK	MOOREFIELD	ON
<b>Jr. 2 Yr Old</b>																				
1		GUCANF911202	CALLUMLEA LANE SHELBY	PB	GP	82	2	297	8954	399	4.5	285	3.2	318	283	285	886	KENNETH MCNABB	NEW HAMBURG	ON
2		GUCANF7433743	MAPLEHURST BOLEROS GIGGLES	PB	VG	87	2	498	8083	369	4.6	255	3.1	270	248	238	756	KEN D FORSTER	LYNDEN	ON
3		GUCANF7766138	EBY LAWN LUX BONNY	PB	GP	81	2	308	7178	333	4.6	254	3.5	258	238	257	753	EBY LAWN FARM	LISTOWEL	ON
4		GUCANF7433747	MAPLEHURST DECISION WINTER	PB	VG	86	2	443	7998	354	4.4	254	3.2	270	241	242	753	KEN D FORSTER	LYNDEN	ON
5		GUCANF8860662	EBY MANOR LEWIS SECELIA	PB	VG	86	2	315	7410	366	4.9	256	3.5	254	249	246	749	EBY MANOR LTD	WATERLOO	ON
6		GUCANF8860676	EBY MANOR ANGELO WHITNEY	PB	GP	81	2	308	6763	334	4.9	253	3.7	245	240	258	743	EBY MANOR LTD	WATERLOO	ON
7		GUCANF7388498	GLEN HAVEN BANGER RUBY	PB	G	76	2	335	7346	338	4.6	258	3.5	256	233	253	742	GLEN HAVEN FARMS	CRYSLER	ON
8		GUCANF7703640	BEAVERWOOD GLACIER'S SAMANTHA	PB	GP	82	2	336	7085	338	4.8	260	3.7	245	232	252	729	GARY WEST	DUNDAS	ON
9		GUCANF7433742	MAPLEHURST LES TWINKLES	PB	VG	85	2	412	7736	332	4.3	248	3.2	259	224	234	717	KEN D FORSTER	LYNDEN	ON
10		GUCANF7924794	GUERNSEY VIEW PANSY'S SHASTA	PB	G	75	2	321	7245	305	4.2	224	3.1	263	223	229	715	CEDAR RIDGE FARMS LTD	KESWICK RIDGE	ON
11		GUCANF8860674	EBY MANOR LANE LORAH	PB	GP	83	2	404	7026	313	4.5	232	3.3	254	225	234	713	EBY MANOR LTD	WATERLOO	ON
12		GUCANF7884994	GLEN HAVEN TILLER'S MAGGIE	PB	GP	80	2	334	7107	331	4.7	265	3.7	238	219	250	707	GLEN HAVEN FARMS	CRYSLER	ON
13		GUCANF7703630	BEAVERWOOD TROMBONE'S RINNA 2	PB	GP	80	2	380	7900	305	3.9	256	3.2	262	202	237	701	GARY WEST	DUNDAS	ON
14		GUCANF8860666	EBY MANOR LANE GINA	PB	GP	80	2	360	7091	320	4.5	232	3.3	247	221	227	695	EBY MANOR LTD	WATERLOO	ON
15		GUCANF7924796	GUERNSEY VIEW JAYDEN'S STAR	PB	GP	81	2	334	6558	304	4.6	219	3.3	240	222	226	688	CEDAR RIDGE FARMS LTD	KESWICK RIDGE	ON
16		GUCANF7433736	MAPLEHURST TILLER HUNIBUN	PB	VG	88	2	405	7854	337	4.3	244	3.1	251	216	220	687	KEN D FORSTER	LYNDEN	ON
17		GUCANF8508433	GUERNSEY VIEW MAGIC'S RETA	PB	VG	86	2	431	7384	324	4.4	235	3.2	243	215	218	676	CEDAR RIDGE FARMS LTD	KESWICK RIDGE	ON
18		GUCANF8508432	GUERNSEY VIEW MAMBY'S RUTHIE	PB	GP	80	2	357	7309	331	4.5	235	3.2	239	215	216	670	CEDAR RIDGE FARMS LTD	KESWICK RIDGE	ON
19		GUCANF7911206	CALLUMLEA LEWIS SEASIDE	PB	GP	81	2	296	6324	288	4.5	228	3.6	227	207	231	665	KENNETH MCNABB	NEW HAMBURG	ON
20		GUCANF7703636	BEAVERWOOD DECISION'S ROPER	PB	GP	81	2	429	7311	289	4	242	3.3	244	193	226	663	GARY WEST	DUNDAS	ON
21		GUCANF8860675	EBY MANOR ANGELO SANDY	PB	GP	84	2	320	6083	274	4.5	235	3.9	220	197	240	657	EBY MANOR LTD	WATERLOO	ON
22		GUCANF7924791	GUERNSEY VIEW KIT'S SARAH	PB	GP	82	2	331	6311	316	5	223	3.5	220	218	219	652	CEDAR RIDGE FARMS LTD	KESWICK RIDGE	ON
23		GUCANF8315977	MAPLEHURST CHILLER'S ZINGER	PB	G	78	2	313	6210	295	4.8	207	3.3	226	215	211	652	BRENDA J & R BRODIE CUPPLES	THORSBY	AB
24		GUCANF8860661	EBY MANOR VILTER RENNEE	PB	G	78	2	328	6408	300	4.7	234	3.6	219	204	225	648	EBY MANOR LTD	WATERLOO	ON
25		GUCANF7645046	COMFORT FARMS LAVENDER	PB	G	74	2	315	6507	288	4.4	208	3.2	232	204	208	644	CRAIG M COMFORT	ST. ANNS	ON
<b>Sr. 2 Yr Old</b>																				
1		GUCANF7477267	CALLUMLEA RUSTY RIVER	PB	GP	82	2	399	9890	494	5	346	3.5	305	303	298	906	KENNETH MCNABB	NEW HAMBURG	ON
2		GUCANF7433732	MAPLEHURST LEWIS BREA	PB	G	76	2	419	8565	362	4.2	269	3.1	266	223	234	723	CEDAR RIDGE FARMS LTD	KESWICK RIDGE	ON
3		GUCANF7703607	BEAVERWOOD B J'S PRISS	50	GP	80	2	458	8765	346	4	285	3.2	262	206	239	707	GARY WEST	DUNDAS	ON
4		GUCANF7433709	MAPLEHURST TURLEY'S TRINKET	PB	VG	86	2	571	7416	345	4.7	247	3.3	244	225	229	698	KEN D FORSTER	DUNDAS	ON
5		GUCANF7703642	BEAVERWOOD HERSHEY'S SOPHIE	PB	GP	85	2	303	6982	372	5.3	246	3.5	222	236	220	678	GARY WEST	DUNDAS	ON
6		GUCANF7433740	MAPLEHURST BOLERO BESSIE ET	PB	VG	85	2	361	6643	313	4.7	220	3.3	223	207	208	638	KEN D FORSTER	LYNDEN	ON
7		GUCANF7433725	MAPLEHURST KEANE GEORGIE	PB	GP	86	2	308	6699	343	5.1	235	3.5	204	208	201	613	KEN D FORSTER	LYNDEN	ON
8		GUCANF7776231	DON HAVEN GAVIN VALERIE	PB	GP	82	2	305	6196	279	4.5	215	3.5	207	184	201	592	JOHN W GORDON	ROCKWOOD	ON
9		GUCANF8821444	BIG SPRING LAMAR LACEY	PB	G	78	2	388	6242	295	4.7	218	3.5	200	187	196	583	BIG SPRING FARMS LTD	KITCHENER	ON
10		GUCANF8723246	CEDAR ROCK RUSS DOLLY	PB	GP	80	2	489	6309	302	4.8	224	3.5	192	182	191	565	WANAMAKER BROTHERS	NAUWIGEAUK	ON
11		GUCANF7657409	BROADVIEW ROMADA	PB	GP	80	2	338	5864	263	4.5	192	3.3	189	169	175	533	ROBERT BEYNON	MAPLE	ON
12		GUCANF8686734	HOLDFAST RUTHIE	PB	GP	81	2	494	6090	253	4.2	201	3.3	188	155	173	516	COLIN MACLEOD	EMBRO	ON
13		GUCANF7703616	BEAVERWOOD LAMAR'S RACHEL	PB	GP	81	2	474	6129	249	4.1	208	3.4	185	150	176	511	GARY WEST	DUNDAS	ON
14		GUCANF7665515	CEDAR ROCK LAMAR ROSEBUD	PB	G	79	2	327	5677	237	4.2	179	3.1	188	155	167	510	WANAMAKER BROTHERS	NAUWIGEAUK	ON
15		GUCANF7645017	COMFORT FARMS LUMIERE	PB	GP	81	2	349	6036	244	4	206	3.4	182	147	175	504	CRAIG M COMFORT	ST. ANNS	ON
16		GUCANF7665511	CEDAR ROCK LAMAR MISSY	PB	G	77	2	342	5629	234	4.2	185	3.3	178	148	164	490	WANAMAKER BROTHERS	NAUWIGEAUK	ON
17		GUCANF7657391	BROADVIEW RHODA 2ND	PB	GP	81	2	476	5092	239	4.7	160	3.1	161	150	143	454	ROBERT BEYNON	MAPLE	ON
18		GUCANF8860645	EBY MANOR LEWIS DEEANE	PB	GP	80	2	418	4952	230	4.6	165	3.3	155	144	145	444	EBY MANOR LTD	WATERLOO	ON

**PRODUCTION RECORDS**

Records completed Jan 2009-Aug 2009

These records are the top 25 ranked according to Composite BCA

Rank	REGISTRATION	NAME	Purity	Class	Calving	DIM	Milk	Fat	%F	Prot	%P	BCA	BCA	BCA	Total	OWNER	CITY	PROV
1	GUCANF9517997	COANWOOD SUZANNE	PB	G	71	3	309	11472	457	4	378	3.3	357	280	332	969 JOHN & LARRY WIGHAM	CHILLIWACK	BC
2	GUCANF8821443	BIG SPRING REWARD KATIE	PB	G	70	3	325	11285	452	4	332	2.9	347	272	286	905 EBY MANOR LTD	WATERLOO	ON
3	GUCANF8938497	LINDRIAN GARRETT DISH 486	PB	GP	82	3	380	10111	422	4.2	330	3.3	294	245	268	807 JOHN & LINDA TAMIS	SURREY	BC
4	GUCANF7388483	GLEN HAVEN BANGER NICKY	PB	G	75	3	341	7940	388	4.9	302	3.8	255	244	272	771 GLEN HAVEN FARMS	KESWICK RIDGE	ON
5	GUCANF8508427	GUERNSEY VIEW KIT'S RUBY	PB	VG	85	3	366	8407	355	4.2	285	3.4	265	222	252	739 CEDAR RIDGE FARMS LTD	CRESWICK	ON
6	GUCANF8486506	BEAVERWOOD ROY'S PATSY	PB	VG	88	3	422	9297	366	3.9	297	3.2	272	214	243	729 GARY WEST	DUNDAS	NB
7	GUCANF7766122	EY LAWN V FLIP	PB	VG	88	3	304	8232	392	4.8	297	3.6	247	232	250	729 EBY LAWN FARM	LISTOWEL	ON
8	GUCANF7703619	BEAVERWOOD ALSTAR'S RONNIE	PB	GP	81	3	318	7435	335	4.5	268	3.6	240	213	244	697 GARY WEST	DUNDAS	ON
9	GUCANF8863176	BLACKHOME BINGO ROSEY	PB	GP	81	3	465	8397	359	4.3	265	3.2	249	210	221	680 EBY MANOR LTD	WATERLOO	ON
10	GUCANF8821436	BIG SPRING RUSS DINAH	PB	VG	86	3	357	7904	335	4.2	292	3.7	236	198	245	679 BIG SPRING FARMS LTD	KITCHENER	ON
11	GUCANF8860544	EY MANOR LARMER LOTTIE	PB	VG	87	3	372	6565	357	5.4	251	3.8	214	229	230	673 EBY MANOR LTD	WATERLOO	ON
12	GUCANF8860548	EY MANOR GAVIN LEEANDRA	PB	GP	83	3	316	6459	368	5.7	231	3.6	212	239	214	665 EBY MANOR LTD	WATERLOO	ON
13	GUCANF8860542	EY MANOR MA ROYAL	PB	GP	83	3	348	6871	336	4.9	256	3.7	220	213	231	664 EBY MANOR LTD	WATERLOO	ON
14	GUCANF8821429	BIG SPRING TILLER LYNSEY	PB	VG	85	3	335	8346	356	4.3	264	3.2	242	207	215	664 EBY MANOR LTD	WATERLOO	ON
15	GUCANF8821437	BIG SPRING LAMAR LEANN	PB	VG	88	3	315	7611	324	4.3	256	3.4	235	198	223	656 EBY MANOR LTD	WATERLOO	ON
16	GUCANF8860540	EY MANOR BANGER DEB	PB	VG	86	3	328	7401	322	4.3	262	3.5	226	195	224	645 EBY MANOR LTD	WATERLOO	ON
17	GUCANF8860533	EY MANOR VILTER IDA	PB	VG	87	3	331	7350	344	4.7	268	3.6	218	204	223	645 EBY MANOR LTD	WATERLOO	ON
18	GUCANF8818390	COMFORT FARMS SILVER LILLIAN	PB	GP	82	3	416	7724	335	4.3	262	3.4	228	197	217	642 CRAIG M COMFORT	ST. ANNS	ON
19	GUCANF7703605	BEAVERWOOD B J'S PAL	50			3	317	7493	302	4	279	3.7	224	179	234	637 GARY WEST	DUNDAS	ON
20	GUCANF7703613	BEAVERWOOD LEWIS'S ROCHELLE	PB	GP	84	3	303	6796	314	4.6	243	3.6	210	192	212	614 GARY WEST	DUNDAS	NB
21	GUCANF8508426	GUERNSEY VIEW MURIEL'S PEGGY	PB	GP	84	3	404	6816	326	4.8	240	3.5	207	195	205	607 CEDAR RIDGE FARMS LTD	KESWICK RIDGE	NB
22	GUCANF7433706	MAPLEHURST TURLEYS MARTHA	PB	GP	85	3	366	7326	310	4.2	263	3.6	211	179	214	604 KEN D FORSTER	LYNDEN	ON
23	GUCANF7703608	BEAVERWOOD RONALD'S PORKY	PB	GP	80	3	412	7203	294	4.1	240	3.3	220	177	205	602 CEDAR RIDGE FARMS LTD	KESWICK RIDGE	NB
24	GUCANF8818398	COMFORT FARMS ANISSA	PB	G	75	3	406	7475	298	4	245	3.3	220	175	202	597 BRUCE W COMFORT	ST. ANNS	ON
25	GUCANF8723250	CEDAR ROCK M A NESLIE	PB	G	75	3	384	6662	308	4.6	228	3.4	201	186	193	580 WANAMAKER BROTHERS	NAUWIGEAUWUK	NB
1	GUCANF102214908	BONNIEGLEN JB CHOCOLATE	50	G	77	3	348	11150	413	3.7	350	3.1	313	232	276	821 ROBERT MASON	ORMSTOWN	QC
2	GUCANF8860632	EY MANOR GAVIN SARAH	PB	GP	83	3	332	7969	355	4.5	283	3.5	249	219	248	716 EBY MANOR LTD	WATERLOO	ON
3	GUCANF7703601	BEAVERWOOD ROY'S PONY	PB	GP	81	3	321	8219	321	3.9	282	3.4	258	198	250	706 CEDAR RIDGE FARMS LTD	KESWICK RIDGE	NB
4	GUCANF8661589	ASHAWAY ROGER PEPSI	50			3	454	8330	379	4.5	271	3.2	241	217	220	678 DAVID BYERLAY	WOODSTOCK	ON
5	GUCANF7433718	MAPLEHURST MAGICMAN BEAUTY ET	PB	VG	86	3	307	7949	329	4.1	258	3.2	249	202	226	677 KEN D FORSTER	LYNDEN	ON
6	GUCANF8486494	BEAVERWOOD LEWIS' PEGGY	PB	GP	80	3	536	8232	361	4.4	279	3.4	239	207	229	675 GARY WEST	DUNDAS	NB
7	GUCANF8860631	EY MANOR RUSS BETTIE	PB	GP	80	3	322	7100	353	5	262	3.7	221	215	230	666 EBY MANOR LTD	WATERLOO	ON
8	GUCANF7433692	MAPLEHURST MAGIC LANA	PB	VG	87	3	500	7702	393	5.1	265	3.4	214	218	207	639 KEN D FORSTER	LYNDEN	ON
9	GUCANF7433698	MAPLEHURST TILLER SNOBIRD ET	PB	VG	85	3	541	8725	334	3.8	242	2.8	246	188	192	628 KEN D FORSTER	LYNDEN	ON
10	GUCANF7433707	MAPLEHURST RESPONSE ABILITY	PB	VG	85	3	313	7079	347	4.9	226	3.2	211	204	190	605 KEN D FORSTER	LYNDEN	ON
11	GUCANF8723239	CEDAR ROCK DOLLAR MARIE	PB	GP	81	3	534	7258	363	5	247	3.4	204	203	196	603 WANAMAKER BROTHERS	NAUWIGEAUWUK	NB
12	GUCANF7703604	BEAVERWOOD D L'S PROXY	PB	GP	81	3	310	6669	308	4.6	238	3.6	203	186	203	592 GARY WEST	DUNDAS	NB
13	GUCANF7433712	MAPLEHURST MAGICMAN BRITNEY ET	PB	EX	91	3	349	7124	302	4.2	244	3.4	209	176	200	585 KEN D FORSTER	LYNDEN	ON
14	GUCANF8486507	BEAVERWOOD D L'S PIXIE 2	PB	GP	83	3	396	6704	299	4.5	227	3.4	203	179	194	576 GARY WEST	DUNDAS	NB
15	GUCANF7433702	MAPLEHURST BINGO PATTY	PB	GP	83	3	370	6795	298	4.4	238	3.5	195	170	192	557 WOODRUFF FARM	BELWOOD	ON
16	GUCANF8280380	BROADVIEW PAT 2	PB	G	77	3	450	6829	305	4.5	232	3.4	192	171	184	547 ROBERT BEYNON	MAPLE	ON
17	GUCANF8280389	BROADVIEW PRIMROSE 2	PB	GP	80	3	321	6280	281	4.5	218	3.5	191	169	186	546 ROBERT BEYNON	MAPLE	ON
18	GUCANF7376472	BROWN EDEN GAVIN NICKI	PB	GP	82	3	302	6137	308	5	218	3.5	182	179	182	543 BROWN EDEN FARMS	MAPLE	ON
19	GUCANF8280383	BROADVIEW PAM	PB	GP	81	3	408	6286	318	5.1	229	3.6	178	181	182	541 ROBERT BEYNON	SHELburne	ON
20	GUCANF7433708	MAPLEHURST TURLEYS MARISSA	PB	GP	83	3	313	5952	243	4.1	197	3.3	178	144	166	488 KEN D FORSTER	LYNDEN	ON
21	GUCANF8486503	BEAVERWOOD TRADITIONS POE	PB	GP	83	3	330	5113	249	4.9	200	3.9	150	145	164	459 GARY WEST	DUNDAS	NB

St. 3 Yr Old

**PRODUCTION RECORDS**

Records completed Jan 2009-Aug 2009

These records are the top 25 ranked according to Composite BCA

Rank	REGISTRATION	NAME	Purity	Class	Calving	DIM	Milk	Fat	%F	Prot	%P	BCA	BCA	Total	OWNER	CITY	PROV	
1	GUCANF7477253	CALLUMLEA MAGICMAN PHOENIX	PB	GP	82	4	303	9959	399	4	327	3.3	298	235	274	807 KENNETH MCNABB	NEW HAMBURG	ON
2	GUCANF7477251	CALLUMLEA QUEBEC PAIGE	PB	G	77	4	342	9922	435	4.4	346	3.5	280	244	275	799 KENNETH MCNABB	NEW HAMBURG	ON
3	GUCANF8508413	GUERNSEY VIEW GLORY'S NADINE	PB	GP	81	4	334	9046	400	4.4	289	3.2	269	235	241	445 CEDAR RIDGE FARMS LTD	KESWICK RIDGE	NB
4	GUCANF8486485	BEAVERWOOD ROY'S NORMA	PB	GP	81	4	323	7456	383	5.1	269	3.6	221	223	224	668 GARY WEST	DUNDAS	NB
5	GUCANF8723229	CEDAR ROCK JB LAURIE	PB	GP	81	4	479	8409	373	4.4	282	3.4	230	204	217	651 WANAMAKER BROTHERS	NAUWIGEAUK	NB
6	GUCANF8486482	BEAVERWOOD ROY'S NANETTE	PB	GP	81	4	472	9560	312	3.3	286	3	260	170	218	648 GARY WEST	DUNDAS	NB
7	GUCANF8280355	BROADVIEW NIBBLE	PB	VG	85	4	486	7918	385	4.9	282	3.6	219	210	219	648 ROBERT BEYNON	MAPLE	NB
8	GUCANF8723236	CEDAR ROCK D L YVETTE	PB	G	76	4	331	7760	380	4.9	270	3.5	219	213	214	646 WANAMAKER BROTHERS	NAUWIGEAUK	NB
9	GUCANF8818363	COMFORT FARMS DEANNE	PB	EX	90	4	437	8024	368	4.6	283	3.5	219	200	216	635 CRAIG M COMFORT	ST. ANNS	ON
10	GUCANF8860604	EBY MANOR LEWIS ISABEL	PB	GP	80	4	404	7294	390	5.3	263	3.9	199	213	218	630 NATIONAL MUSEUM OF SCIENCE & LYNDEN	OTTAWA	ON
11	GUCANF8531568	MAPLEHURST ROMEO LENA	PB	VG	88	4	343	7799	356	4.6	263	3.4	220	200	209	629 ROBERT FORSTER	LYNDEN	ON
12	GUCANF8661578	ASHAWAY PEANUT	PB	GP	88	4	529	8583	348	4	272	3.2	233	187	208	628 DAVID BYERLAY	WOODSTOCK	ON
13	GUCANF8818368	COMFORT FARMS HILMA	PB	GP	80	4	360	7319	330	4.5	261	3.6	216	193	216	625 BRUCE W COMFORT	ST. ANNS	ON
14	GUCANF8486462	BEAVERWOOD RONALD MALLY	PB	PB	80	4	519	7921	309	4.2	256	3.5	218	181	213	612 GARY WEST	DUNDAS	NB
15	GUCANF8531562	MAPLEHURST BANGER CELESTE	PB	VG	86	4	326	7620	334	4.4	260	3.4	213	186	205	604 KEN D FORSTER	LYNDEN	ON
16	GUCANF8818385	COMFORT FARMS LUCI	PB	GP	82	4	340	7012	313	4.5	236	3.4	214	186	202	602 CRAIG M COMFORT	ST. ANNS	ON
17	GUCANF8863156	BLACKHOME DOUBLE L PEONY	PB	G	74	4	566	7155	313	4.4	219	3.1	220	190	189	599 ALAN A BLACK	MOOREFIELD	ON
18	GUCANF7359449	MAPLEHURST BUBU ET	PB	VG	85	4	313	6797	339	5	251	3.7	197	195	204	596 KEN D FORSTER	LYNDEN	ON
19	GUCANF8676617	REDGOLD TRADITION'S PRAXIS	PB	PB	85	4	329	6995	303	4.3	251	3.6	207	177	207	591 ALAN SPENCE	VANKLEEK HILL	ON
20	GUCANF8818370	COMFORT FARMS HEART OF GOLD	PB	VG	86	4	344	6895	331	4.8	258	3.7	197	187	206	590 BRUCE W COMFORT	ST. ANNS	ON
21	GUCANF8860615	EBY MANOR S GLORIA	PB	GP	81	4	320	6597	322	4.9	228	3.5	197	191	192	580 EBY MANOR LTD	WATERLOO	ON
22	GUCANF8509287	BIG SPRING D L KAYLA	PB	GP	83	4	325	7361	335	4.5	249	3.4	201	183	192	576 BIG SPRING FARMS LTD	KITCHENER	ON
23	GUCANF8838463	LINDRIAN SILVERADO BABE 452	PB	VG	85	4	293	7385	321	4.3	244	3.3	205	177	191	573 JOHN & LINDA TAMIS	SURREY	BC
24	GUCANF8280356	BROADVIEW NATALIE 2	PB	VG	87	4	351	7288	305	4.2	244	3.4	199	167	188	554 ROBERT BEYNON	MAPLE	ON
25	GUCANF101891960	REYLA VILTNER LENA	PB	GP	80	4	341	6826	299	4.5	253	3.8	183	165	196	544 ROBERT MASON	ORMSTOWN	QC
1	GUCANF8506193	EBY LAWN LUX TANIA	PB	VG	87	5	448	11172	436	3.9	352	3.1	294	231	261	786 EBY LAWN FARM	LISTOWEL	ON
2	GUCANF7334431	GLEN HAVEN GOLDEN'S BONNIE	PB	GP	82	5	509	9008	466	5.2	330	3.7	253	257	260	770 GLEN HAVEN FARMS	CRYSLER	ON
3	GUCANF10034326	MARODORE LOGIC LAINEY-ET ET	PB	EX	93	5	1184	10225	441	4.3	333	3.3	270	232	247	749 KEN D FORSTER	LYNDEN	ON
4	GUCANF8666912	DON HAVEN LORAL VIXEN	PB	EX	90	5	494	8792	422	4.8	319	3.6	233	224	236	693 JOHN W GORDON	ROCKWOOD	ON
5	GUCANF8508212	BROWN EDEN VISA SPECTACULAR	PB	VG	88	5	444	7938	377	4.8	274	3.5	220	208	212	640 BROWN EDEN FARMS	SHELburne	ON
6	GUCANF9261619	MEADOW VIEW NITRO'S KITTEN	PB	GP	80	5	272	7692	325	4.2	288	3.7	217	180	229	626 KENNETH MCNABB	NEW HAMBURG	ON
7	GUCANF8412439	BEAVERWOOD RONALD MELLA	PB	EX	90	5	501	7804	350	4.5	262	3.4	221	194	208	623 KEN D FORSTER	LYNDEN	ON
8	GUCANF8486466	BEAVERWOOD PATTON MICHAELA	PB	PB	80	5	417	7824	361	4.6	254	3.2	220	203	200	623 GARY WEST	DUNDAS	NB
9	GUCANF8486463	COMFORT FARMS SYLVIE	PB	PB	80	5	285	7409	322	4.3	262	3.5	217	187	215	619 GARY WEST	DUNDAS	NB
10	GUCANF8818354	BEAVERWOOD LUXURY MARTA	PB	G	78	5	285	7513	374	5	258	3.4	209	208	202	619 CRAIG M COMFORT	ST. ANNS	ON
11	GUCANF8486448	EBY MANOR WARDEN SELESTE	PB	PB	80	5	368	8227	373	4.5	279	3.4	216	197	205	618 GARY WEST	DUNDAS	NB
12	GUCANF8665234	MAPLEHURST MAGICMAN GRACIOUS ET	PB	GP	84	5	375	7436	324	4.4	282	3.8	207	179	220	606 EBY MANOR LTD	WATERLOO	ON
13	GUCANF8531561	BEAVERWOOD POKER MILLY	PB	VG	87	5	311	7405	318	4.3	227	3.1	217	184	186	587 KEN D FORSTER	LYNDEN	ON
14	GUCANF8486453	BEAVERWOOD RONALD'S NINA	PB	PB	82	5	328	7531	319	4.2	283	3.8	202	172	213	587 GARY WEST	DUNDAS	NB
15	GUCANF8486472	COMFORT FARMS SHAWNA 2	PB	GP	82	5	296	7780	312	4	248	3.2	209	166	187	562 GARY WEST	DUNDAS	NB
16	GUCANF8508361	HOLDFAST MEGAN	PB	GP	82	5	670	8481	313	4.8	238	3.7	187	180	193	560 CRAIG M COMFORT	ST. ANNS	ON
17	GUCANF8666710	COMFORT FARMS ROGER MARINA	PB	G	76	5	333	7490	325	4.3	259	3.5	196	172	190	558 COLIN MACLEOD	EMBRO	ON
18	GUCANF8508378	BIG SPRING JODY ERIN	PB	VG	85	5	413	7793	296	3.8	253	3.2	208	159	189	556 GEORGE A COMFORT	ST. ANNS	ON
19	GUCANF8509284	GUERNSEY VIEW KAREN'S MARTHA	PB	EX	91	5	329	6293	292	4.6	236	3.8	185	171	195	551 EBY MANOR LTD	WATERLOO	ON
20	GUCANF8508410	BEAVERWOOD RONALD'S NINA	PB	VG	85	5	314	6382	289	4.5	216	3.4	187	168	179	534 CEDAR RIDGE FARMS LTD	KESWICK RIDGE	NB
21	GUCANF8540813	BEAVERWOOD POKER MILLY	PB	VG	85	5	305	6175	295	4.8	232	3.8	171	163	181	515 MORRIS & PENNY BARTLETT	CALEDONIA	ON
22	GUCANF8486454	BEAVERWOOD DOLLAR MELANIE	PB	PB	85	5	322	6459	222	3.4	231	3.6	186	128	186	500 GARY WEST	DUNDAS	NB
23	GUCANF8723203	CEDAR ROCK GOLDEN WILLA 6M	PB	GP	83	5	481	6389	274	4.3	228	3.6	170	147	170	487 WANAMAKER BROTHERS	NAUWIGEAUK	NB
24	GUCANF8821379	BIG SPRING JODY JENNY	PB	GP	80	5	298	6042	260	4.3	205	3.4	163	139	155	457 LEON MACLEOD	NEUSTADT	ON
25	GUCANF8666712	HOLDFAST MIKKI	PB	GP	80	5	424	5131	245	4.8	186	3.6	147	141	150	438 COLIN MACLEOD	EMBRO	ON

5 Yr Old

# PRODUCTION RECORDS

Records completed Jan 2009-Aug 2009

These records are the top 25 ranked according to Composante BCA

Rank	REGISTRATION	NAME	Purity	Class	Calving	Dim	Milk	Fat	%F	Prot	%P	BCA	BCA	BCA	Total	OWNER	CITY	PROV
1	GUCANF10034740	BEAVERWOOD KODY	PB	VG	7	507	12231	487	4	406	3.3	314	256	292	862	GARY WEST	DUNDAS	ON
2	GUCANF10033966	GUERNSEY VIEW HEIDI'S KAREN	PB	GP	7	361	8460	410	4.8	279	3.3	242	240	225	707	CEDAR RIDGE FARMS LTD	KESWICK RIDGE	NB
3	GUCANF10033581	EBY MANOR JORDAN DEKOTA	PB	EX	8	350	7329	368	5	273	3.7	214	220	224	658	EBY MANOR LTD	WATERLOO	ON
4	GUCANF8454012	EBY MANOR DYNASTY WESTIN	PB	VG	7	352	7590	375	4.9	276	3.6	211	213	216	640	EBY MANOR LTD	WATERLOO	ON
5	GUCANF10033505	MARSHDENE NOBIL MARY	PB	VG	8	418	7651	356	4.7	280	3.7	205	199	211	615	CHRIS & BRIANNE BROWN	SHELburne	ON
6	GUCANF10033872	BROADVIEW KARA	PB	GP	7	479	7885	348	4.4	261	3.3	209	186	195	590	ROBERT BEYNON	MAPLE	ON
7	GUCANF10035868	CEDAR ROCK GOLDFOOT LISA 1M	PB	GP	6	358	7337	342	4.7	247	3.4	200	188	190	578	WANAMAKER BROTHERS	NAUWIGEWALK	NB
8	GUCANF8676602	REDGOLD WARDEN'S MILKSHAKE	PB	VG	6	305	6483	347	5.3	242	3.7	185	199	194	578	ALAN SPENCE	VANKLEEK HILL	ON
9	GUCANF8531510	MAPLEHURST ROGER'S WENDY	PB	G	7	316	7009	277	4	234	3.3	204	163	190	562	KEN D FORSTER	LYNDEN	ON
10	GUCANF8486416	BEAVERWOOD LORNE	PB	GP	6	457	6815	347	5.1	232	3.4	186	191	177	554	GARY WEST	DUNDAS	NB
11	GUCANF8486439	BEAVERWOOD LIDA	PB	GP	6	451	7564	344	4.5	244	3.2	195	180	177	552	KEN D FORSTER	DUNDAS	NB
12	GUCANF8531499	MAPLEHURST WARDEN CHERRY	PB	GP	8	415	6909	325	4.7	259	3.8	179	174	188	541	GARY WEST	LYNDEN	ON
13	GUCANF10033629	BEAVERWOOD KARLA 2	PB	GP	7	454	6714	301	4.5	233	3.5	180	168	175	523	BRUCE W COMFORT	DUNDAS	NB
14	GUCANF10032874	COMFORT FARMS ELVERA	PB	VG	6	352	6919	291	4.2	242	3.5	183	166	179	518	WANAMAKER BROTHERS	ST. ANNS	ON
15	GUCANF10035148	CEDAR ROCK GOLDEN'S HOLLY 7L	PB	GP	6	337	6036	289	4.8	205	3.4	173	166	165	504	COLIN MACLEOD	NAUWIGEWALK	NB
16	GUCANF8686708	HOLDFAST MORGAN	PB	GP	8	384	6327	281	4.4	219	3.5	170	158	166	494	GARY WEST	EMBRO	ON
17	GUCANF10033381	BEAVERWOOD HISTEN	PB	GP	7	238	6932	254	3.7	227	3.3	184	136	170	490	GARY WEST	DUNDAS	NB
18	GUCANF8486414	BEAVERWOOD LUCKY 2	PB	EX	9	290	5700	265	4.7	196	3.4	165	159	160	484	KEN D FORSTER	DUNDAS	NB
19	GUCANF10033023	MAPLEHURST G GOLD	PB	GP	8	324	5753	248	4.3	200	3.5	157	139	154	450	ROBERT BEYNON	LYNDEN	ON
20	GUCANF10033311	BROADVIEW JULIE 2	PB	GP	6	306	5109	235	4.6	194	3.8	148	135	158	441	GLEN HAVEN FARMS	MAPLE	ON
21	GUCANF7334419	GLEN HAVEN GOLDEN GIRL	PB	G	7	319	5059	263	5.2	195	3.9	140	145	151	436	MICHAEL J MATHIESON	CRYSLER	ON
22	GUCANF8335759	WESTBROOK WARDEN'S GWEN	PB	GP	6	264	5725	239	4.2	180	3.1	159	134	140	433	CRAIG M COMFORT	BRESLAU	ON
23	GUCANF8508363	COMFORT FARMS LUBA	PB	GP	8	322	4987	237	4.8	165	3.3	145	141	135	421	TERRY R BECKETT	ST. ANNS	ON
24	GUCANF10033497	SUN SET MAGICMAN NATALIE-LYNNIE ET	PB	EX	9	322	4547	222	4.9	165	3.6	131	128	134	393	TERRY R BECKETT	SUNDERLAND	ON
25	GUCANF8410707	SUN SET BSR NATILDA	PB	VG	8	322	4547	222	4.9	165	3.6	131	128	134	393	TERRY R BECKETT	SUNDERLAND	ON

### CANADIAN DAIRY NETWORK / RÉSEAU LAITIÈRE CANADIEN

#### TOP 5 GUERNSEY HERDS BY LPI / 5 MEILLEURS TROUPEAUX GUERNSEY SELON L'IPV

Rank	LPI	IPV	No. Cows	No. Vaches	Name of Farm / Owner	City	Province	Milk	Fat	Protein	Fat %	Prot %	SCS	CONF	MS	F&L	DS	RP
1	406	352	49	49	EBY MANOR FARM LTD.	WATERLOO	ON	401	21	14	0.07	0.01	2.99	1.8	0.9	2.2	1.3	0.3
2	352	157	49	45	MAPLEHURST FARMS	LYNDEN	ON	596	21	16	-0.05	-0.05	2.92	1.0	0.7	0.4	1.0	1.7
3	140	140	42	42	CEDAR RIDGE FARMS LTD	KESWICK RIDGE	NB	189	10	5	0.04	-0.02	2.92	3.0	1.9	2.1	1.7	1.4
4	129	129	41	41	COMFORT FARMS	ST ANNS	ON	238	9	7	0.00	-0.01	2.88	0.9	0.8	0.3	0.1	1.2
5	129	129	41	41	BROADVIEW	MAPLE	ON	341	14	9	0.01	-0.03	3.02	1.1	1.2	0.7	0.8	0.8

# PHOTO GALLERY

Photos courtesy of : Cedar Ridge Farms, Callumlea Farm, Don Haven Farms & Eby Manor Ltd.





FALL ISSUE 2009

PRINTED SEPTEMBER 2009