



GUERNSEY JOURNAL

2018 EDITION



CANADIAN GUERNSEY JOURNAL

ISSN 0831-3008
Canada Post subsidy #1364

VOL. XCI NO. 1

Devoted to the Advancement of the Guernsey Breed
Published yearly by the Canadian Guernsey Association
Advertising Rates Available upon Request
Canadian Guernsey Journal Magazine
Design by Holly McFarlane

CANADIAN GUERNSEY ASSOCIATION

HEAD OFFICE

7660 Mill Road, Guelph, ON, N1H 6J1
Phone: 519-836-2141, Fax: 519-763-6582
Email: info@guernseycanada.ca
www.guernseycanada.ca
Second Class Mail Registration #40007699
Subsidy # 1364

OFFICERS & DIRECTORS

PRESIDENT Alan Spence, Vankleek Hill, ON
VICE-PRESIDENT Morris Bartlett, Caledonia, ON
FIELDMAN Rob Forster, Lynden, ON

ADMINISTRATOR Jessie Weir
7660 Mill Road, Guelph, ON

DIRECTORS

Ken Forster, Lynden, ON
Jim Eby, Waterloo, ON
Scott Gordon, Rockwood, ON
Paul Noble, Moorefield, ON
John Tamis, Surrey, BC
Amy Kemp, Selkirk, ON
Kyle Drost, Listowel, ON

ONTARIO DIRECTORS

PRESIDENT Colin Comfort, St. Anns, ON
VICE-PRESIDENT Paul Noble, Moorefield, ON

DIRECTORS

Scott Gordon, Rockwood, ON
Morris Bartlett, Caledonia, ON
Jocelyn Forster, Lynden, ON

Subscription cost ~ \$15.00 Cdn annually
(plus HST for Canadian Subscribers)

Cover photo submitted by Holly McFarlane

2018 NATIONAL GUERNSEY SHOW

FRIDAY, SEPTEMBER 21, 2018

ANCASTER FAIRGROUNDS, ANCASTER, ON

10:00 A.M.



2018 Table of Contents

2018 National Guernsey Show Information	2
President's Address	3
Board of Directors	3
Fieldman Reflections	4
Lindrian Farms Award	4
Breeder Profile	6
Latifa Legend Yoda	7
Canadian National Guernsey Show 2017 Results	8-12
Canadian National Guernsey Show Sponsors	13
CDN Genetic Evaluation Highlights - April 2018	14
Top 5 Guernsey Herds by LPI	14
Gold Star Breeder Award	14
"Magic" Cow Produces Milk That May Be Easier to Digest	16-17
Production Records	18-19
Canadian Guernsey Annual Awards	20
Guernsey Ontario Annual Awards	20
Canadian Class Leaders	21
80 Tonne Cows	21
Superior Production Awards	22
Classifications	23-24
Average Production by Breed	24
Wentworth-Niagara Guernsey Club Picnic	26
Fee Schedule	27

Advertiser's Index

Bydand Farm	5
Comfort Farm	13
Eby Manor Farms Inc.	15
Maplehurst Farm	25
RednGold Guernseys	26
Rob, Julie, Jesse & Jocelyn Forster	Back Cover

PRESIDENT'S ADDRESS

Our annual Canadian Guernsey Journal highlights the best of our breed, from show winners and top classifying cows to superior production leaders. When it comes to milk production, it has been said that a combination of good management and strong genetics provides maximum results. Canadian Guernsey breeders are fortunate to have several tools available when it comes to genetic selection. The Canadian Dairy Network (www.cdn.ca) is an invaluable source of information. We now have access to genomic data, and bull proof reliability will continue to improve as more animals are sampled. This is especially important for our young sire selection. CDN also provides cow indexes and a useful inbreeding calculator that predicts the parent average of the offspring. Another handy feature is the inclusion of beta casein results for breeders who select A2A2

matings. The Guernsey breed is known for its high percentage of A2 beta casein animals, and we should continue to work towards becoming entirely A2A2.

Looking at our national average production over the last ten years, it is encouraging to see progress. To obtain maximum genetic gain, embryo transfer should be considered for your best animals. Implant the embryos in non-Guernsey recipients and use sexed semen with your heifers and young cows. This will result in superior quality replacements for your herd.

I would like to congratulate and thank our member breeders who care for their Guernsey cattle on a daily basis, providing constant support and promotion. We are aware of the benefits of the Guernsey breed and of their quality milk – let's share the secret!

CANADIAN & ONTARIO GUERNSEY ASSOCIATION BOARD OF DIRECTORS



Standing (L to R): Scott Gordon, Colin Comfort (ON President), Jim Eby, Paul Noble (ON Vice-President), Jessie Weir, Morris Bartlett (CAN Vice-President), Kyle Drost

Sitting (L to R): Jocelyn Forster, Ken Forster, Rob Forster Absent: Alan Spence (CAN President), Amy Kemp, John Tamis

FIELDMAN REFLECTIONS

Rob Forster, Canadian Guernsey Fieldman

Opportunities are abound for the Guernsey breed! Demand for animals exceeds supply! This is a good problem to have however breeders need to be open to selling animals as well. In years past, inquiries would be made for "house cows" (and still are), but now inquiries are also being made for animals to be added to existing herds. This is exactly what is needed for Guernsey growth! The Guernsey cow is an attractive alternative due to the milk's high quality and health benefits.

West Coast Holsteins of Chilliwack, B.C. recently made a splash in the Guernsey world with their purchase of the Junior Champion at World Dairy Expo to add to their 30 head of Guernseys that originated from Washington State. The milk from these animals is currently being used for cheese production. West Coast is also looking for a significant number of A2A2 Guernseys to supply products to an infinite market in British Columbia. We look forward to providing assistance to them as they embark on the Guernsey adventure! We are also working on a project with the American Guernsey Association regarding the export of a significant number of embryos.

Last year's Canadian Guernsey National Show was exceptional and I would expect nothing less at this year's show scheduled for September 21 at the Ancaster Fair. Many thanks to Jessie Weir for scorekeeping, Marie McNabb for announcing, Harry Emmott for serving as our ringman, Glenn Barkey as our official judge, Frank Robinson as our

photographer, and to our many class sponsors and exhibitors for participating at the 2017 show.

Our first young sire entrant into the Canadian Guernsey Association program, Lindrian Grumpy Pilot has a few daughters that have freshened and I would expect a proof on the next round in August. Pilot also has his first son in A.I., Walnut Ridge Prince Charming who is available from Select Sires. Our next entrants are about a year away so we have been looking at other options to fill the gap. Unfortunately, a couple of prospective UK sires did not meet health requirements. We are currently looking at another UK sire that already in stud and eligible for export to Canada.

This report would not be complete without mentioning the continued successes of Eby Manor Ltd. 2017 included the release of Guernsey ice cream. It comes in various flavours and is made in small batches. I had the pleasure to enjoy this little piece of heaven. There are very few products that have cream based Guernsey milk as the first ingredient listed on the box!

All the best in 2018,

Rob Forster

Canadian Guernsey Fieldman
rforster@guernseycanada.ca

Pictured (right):
Lindrian Farms Award for
highest butterfat herd average
Scott Gordon, Rockwood, ON



Bydand Farm



2018 marks the Gordon families 80th anniversary at our farm on the edge of the village of Eramosa. What started as a mixed farm is now strictly dairy and we have made so many changes over the years that my grandfather would hardly recognize the place. The dairy business has served us well allowing our family and farm to grow and mature. We have been honoured to receive a few superior production awards, milk quality gold seals, bred a few excellent cows including an All American and 2 Canadian junior champions. A solid foundation has been set by the generations before and I will continue to build on that as I watch my farm and family mature and flourish.

Scott & Katrina Gordon
Hanna & Kayla
(519) 994-6910

Bydand Holsteins & Don Haven Guernseys and Ayrshires
5436 Wellington Rd. 26, Rockwood, ON N0B 2K0
bydandfarm@gmail.com

John & Nancy Gordon
(519) 824-9548

BREEDER PROFILE



Kyle, Adrienne Drost and family farm about 10 minutes east of Listowel, just on the edge of Wellington County. Kyle's grandparents immigrated from the Netherlands in 1959, and bought the Drost's current farm in 1961. Kyle's parents, John & Linda purchased it from them in 1981, and Kyle and Adrienne bought it from John and Linda as third generation farmers in 2013. The home farm is 150 acres and Kyles parents own 100 acres down the road in which they crop share. They milk 55 cows in a tie stall, (approx. 50 Holsteins and 5 Guernseys).

The Guernsey breed caught Kyles eye a few years ago. He was looking for a dairy cow that no one else had, yet still had good milk production, a beautiful colour and markings plus A2A2.

They currently grow 90 acres of hay ground (80% Alfalfa, 20% Timothy), 22 acres of beans, 26 acres wheat and 53 acres of corn silage. Cows are fed a TMR ration of corn silage, haylage, and a complete feed from Molesworth Farm Supply.

Kyle and Adrienne have three children, Sophie (7), Bianca (6) and John (4.5) whom (most of the time) enjoy being a part of the daily milking, feeding calves, and summer fieldwork. Kyle and Adrienne love hunting in their spare time and enjoy taking the kids along as well. They are involved in their school and church as well. A family holiday is usually planned for a few days away each summer.

Rockystart Holsteins (and Guernseys!) have a current production average of 33L with a BF of 4.45 as of last testing. Their latest classification was exciting for the Drost family with 25 VG's, 33 GP's, 5 G's. Their cows are bred to Proven Sires with maybe one young sire on the breeding program at a time. Bulls must be A2!! All calves born on their farm now are 100% A2 sired! Chosen bulls must also have positive milk, fat, and protein numbers as well as good feet and legs and a medium stature. Kyle really enjoys the looking into the reproduction side of dairy farming. Kyle started AI eight years ago and currently still breeds the cows, and Eastgen breeds the heifers starting at 13 months old. The first two services are to sexed semen, and then conventional after that. The heifers are fed corn silage, dry hay and a complete chop.

After two generations milking in the bank barn, it was time for it to retire as a milking barn. Kyle's parents built a new tie still barn in 2008 (with 64 stalls) and heifers were raised in the bank barn. In 2015 Kyle and Adrienne built at Britespan pack barn for heifers, and added onto it in the fall of 2017. The Britespan is 50x210 with ten pack pens and a scrape alley. A few goals for the farm would include receiving an Excellent cow in classification as well as reaching a 100% A2 status.

The largest challenge the Drosts see as new breeders is the lack of live animals available to new breeders. They also find it challenging to "convince" other dairy farmers that there are good milking cows that aren't black and white – something they're hoping changes soon!

LATIFA LEGEND YODA

HB No. 43931

Tested A2A2

The grandam of Yoda is Latifa Pacific Mary Ex 92(2) purchased by Caroline Moody from a local herd as an unregistered cow due to calve her third calf. Mary has had 4 calves with Caroline and all have been heifers.

<http://www.holstein-uk.org/animaldata/animal/factsheet/38649738>

The link above shows her milk records and her progeny



Latifa Pacific Mary Ex92(2)

Her daughter Latifa Princess Leia VG 89 3yo has just calved her third calf and In her 2nd lactation set a new UK Guernsey production record of 1063 kgs of Fat +Protein from a record of 3/04 10539 kgs milk 683 kgs Fat 6.49% Fat 380 kgs Prot 3.61% Prot.

<http://www.holstein-uk.org/animaldata/animal/factsheet/38649743>



Latifa Princess Leia VG 89 3yo

Her full sister Latifa Andantes Mary 2 is due to calve shortly and is another very stylish heifer.



Latifa Andantes Mary 2

CANADIAN NATIONAL GUERNSEY SHOW 2017 RESULTS

JUNIOR CALF

- 1 - **DON HAVEN LATIMER VESPA**, John & Scott Gordon
- 2 - **MAPLEHUST PISTOLL WHISKER**, Ken D. Forster
- 3 - **SELKIRK VINCENT LADY**, Selkirk View Farms
- 4 - **EBY MANOR LEVI WINDY**, Eby Manor Farm Inc.
- 5 - **EBY MANOR JULIUS IRIS**, Eby Manor Farm Inc.
- 6 - **DON HAVEN LATIMER VAVOOM**, John & Scott Gordon



JUNIOR CALF - Don Haven LATIMER VESPA, John & Scott Gordon



INTERMEDIATE CALF - Broadview LEVI ARLENE, Rob Forster

INTERMEDIATE CALF

- 1 - **BROADVIEW LEVI ARLENE**, Rob Forster
- 2 - **EBY MANOR NAVAJO ISLA**, Eby Manor Farm Inc.
- 3 - **SELKIRK VINCENT LYRIC**, Selkirk View Farms
- 4 - **RUNNING SPRING LEVI TOOTSIE**, Morris & Penny Bartlett
- 5 - **MAPLEHURST PISTOLL TRIP**, Ken D Forster
- 6 - **SELKIRK VINCENT LEXI**, Selkirk View Farms

SENIOR CALF

- 1 - **COMFORT FARMS DAENRYS**, Comfort Farms
- 2 - **MAPLEHURST LOGO ROSALEE**, Ken D. Forster
- 3 - **EBY MANOR NAVAJO INSPIRATION**, Eby Manor Farm Inc.



SENIOR CALF - Comfort Farms DAENRYS, Comfort Farms



INTERMEDIATE YEARLING - Maplehurst TOBY PANDORA, Ken D. Forster

INTERMEDIATE YEARLING

- 1 - **MAPLEHURST TOBY PANDORA**, Ken D. Forster
- 2 - **BROADVIEW LEVI APPLE**, John & Scott Gordon
- 3 - **COMFORT FARMS AVELINE**, Comfort Farms

SENIOR YEARLING

- 1 - **MAPLEHURST PILOT NIMBLE**, Ken D. Forster
- 2 - **FREELEA AARON CRYSTAL**, Freelea Farms Inc.
- 3 - **COMFORT FARMS DEANA**, Comfort Farms
- 4 - **SELKIRK FREDDIE MABELLE**, Selkirk View Farms



SENIOR YEARLING - Maplehurst PILOT NIMBLE, Ken D. Forster



RES. Jr. Champion. - Maplehurst TOBY PANDORA, Ken D. Forster,
Jr Champion. - Broadview Levi Arlene, Ken D. Forster

JUNIOR CHAMPION

BROADVIEW LEVI ARLENE, Rob Forster

RESERVE JUNIOR CHAMPION

MAPLEHURST TOBY PANDORA, Ken D. Forster

JUNIOR HERD

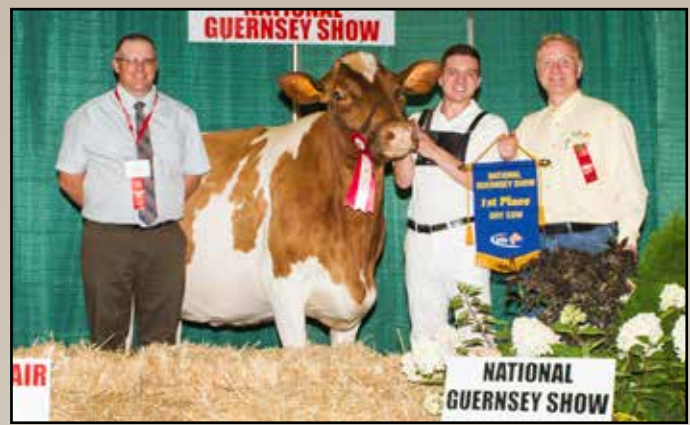
- 1 - **KEN D. FORSTER**
- 2 - **EBY MANOR FARM INC.**
- 3 - **COMFORT FARMS**
- 4 - **SELKIRK VIEW FARMS**



JUNIOR HERD - KEN D. FORSTER

DRY COW

- 1 - **MAPLEHURST DYNAMIC LAUGH**, Ken D. Forster
- 2 - **COMFORT FARMS SHARON**, Comfort Farms
- 3 - **SELKIRK PYTHON LYNETTE**, Selkirk View Farms



DRY COW - Maplehurst DYNAMIC LAUGH, Ken D. Forster

2 YEAR OLD

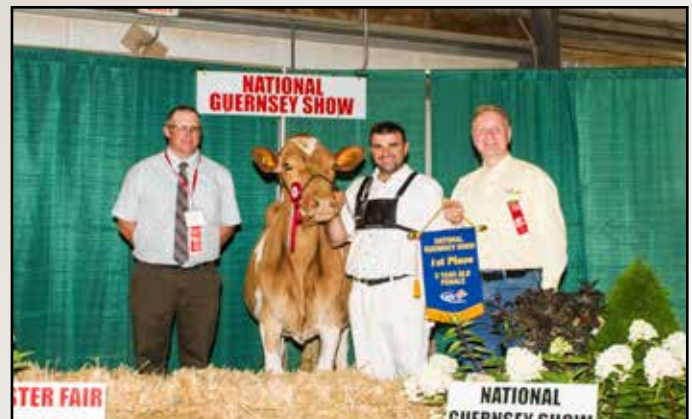
- 1 - **COULEE CREST CARTER LINDY-ET**, Jocelyn Forster
- 2 - **COMFORT FARMS SHALEINE**, Comfort Farms
- 3 - **MAPLEHURST TURLEY GREAT**, Ken D. Forster
- 4 - **MAPLEHURST LEGEND CUTIE**, Ken D. Forster
- 5 - **EBY MANOR CORDELL SAMANTHA**, Eby Manor Farm Inc.
- 6 - **CALLUMLEA PIES BERTHA**, Selkirk View Farms
- 7 - **COMFORT FARMS GOLDY**, Comfort Farms



2 YEAR OLD - Coulee Crest CARTER LINDY, Jocelyn Forster

3 YEAR OLD

- 1 - **MAPLEHURST LES ZELDA**, Rob Forster
- 2 - **EBY MANOR JACKSON FEBRUARY**, Eby Manor Farm Inc.
- 3 - **DON HAVEN TITAN VIVAN**, John & Scott Gordon
- 4 - **DON HAVEN TITAN VISION**, John & Scott Gordon
- 3 - **COMFORT FARMS MARGRET**, Comfort Farms



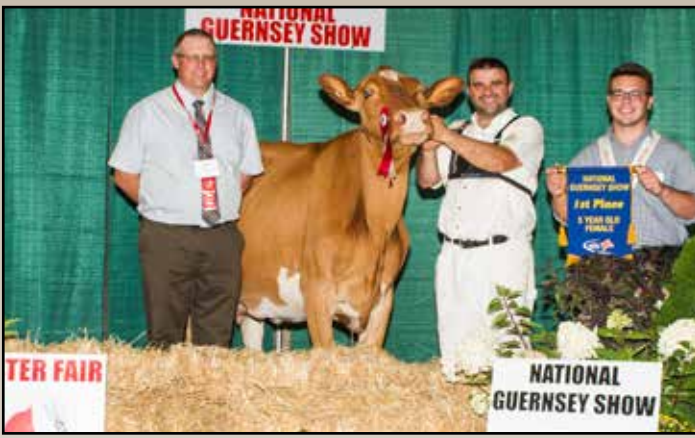
3 YEAR OLD - Maplehurst LES ZELDA, Rob Forster

4 YEAR OLD

- 1 - **MAPLEHURST PRADAS WHISK**, Ken D. Forster
- 2 - **MAPLEHURST PHOENIX BLAZE**, Ken D. Forster
- 3 - **COMFORT FARMS MILEY**, Comfort Farms
- 4 - **MAPLEHURST PHOENIX FEATHERS**, Ken D. Forster
- 5 - **COMFORT FARMS MEG**, Comfort Farms
- 6 - **DON HAVEN ACHIEVE VERMONT**, John & Scott Gordon
- 7 - **BROADVIEW APRICOT**, John & Scott Gordon



3 YEAR OLD - Maplehurst PRADAS WHISK, Ken D. Forster



5 YEAR OLD - Maplehurst GRUMPY NAG, Ken D. Forster

5 YEAR OLD

- 1 - MAPLEHURST GRUMPY NAG, Ken D. Forster
- 2 - MAPLEHURST LES PATOOTY, Ken D. Forster
- 3 - EBY MANOR JUDGEMENT FRAN, Eby Manor Farm Inc.
- 4 - BROADVIEW ZOOBY, Morris & Penny Bartlett
- 5 - GUERNSEY VIEW UPTON'S ZENDA, Rob Forster
- 6 - DON HAVEN LEGION VICTORIA, John & Scott Gordon
- 7 - COMFORT FARMS LYNDSAY, Comfort Farms
- 8 - COMFORT FARMS MADISON, Comfort Farms

BREEDER'S HERD

- 1 - KEN D. FORSTER
- 2 - JOHN & SCOTT GORDON
- 3 - EBY MANOR FARM INC.
- 4 - COMFORT FARMS
- 5 - SELKIRK VIEW FARMS



BREEDER'S HERD - KEN D. FORSTER



PROGENY OF DAM. - Comfort Farms DENNY, Comfort Farms Ltd.

PROGENY OF DAM

COMFORT FARMS DENNY, Comfort Farms

PREMIER EXHIBITOR

KEN D. FORSTER

PREMIER BREEDER

KEN D. FORSTER

GRAND CHAMPION

MAPLEHURST LES ZELDA, Rob Forster

RESERVE GRAND CHAMPION

MAPLEHURST GRUMPY NAG, Ken D. Forster



HERDSMAN AWARD

SELKIRK VIEW FARMS



HERDSMAN AWARD - SELKIRK VIEW FARMS

JUNIOR SHOWMANSHIP

- 1 - JOCELYN FORSTER
- 2 - DEBORAH EBY
- 3 - SARAH VERHEY
- 4 - MARTY DYKSTRA
- 5 - ERIC KLASSEN
- 6 - SARAH PECK
- 7 - ABBEY COCKING
- 8 - KATIE COCKING
- 9 - BRANDON BARTLETT



JUNIOR SHOWMANSHIP - JOCELYN FORSTER

PEEWEE SHOWMANSHIP

- 1 - AUSTIN BOULT
- 2 - AVA FORSTER
- 3 - ELLYSE FORSTER
- 4 - ALYSSA TIERSMA



PEEWEE SHOWMANSHIP - AUSTIN BOULT

CANWEST DHI AWARD

MAPLEHURST PRADAS WHISK, Ken D. Forster

PHOTOGRAPHY

FRANK ROBINSON



CANWEST DHI AWARD - Maplehurst PRADAS WHISK, Ken D. Forster

2017 NATIONAL GUERNSEY SHOW SPONSORS

*We wish to extend our appreciation to all the sponsors that helped to make the 2017
Canadian National Guernsey Show a success!*

BROADVIEW FARMS
YANTZI'S FEED & SEED
WENTWORTH NIAGARA GUERNSEY CLUB
UPPER CANADA CHEESE COMPANY
EASTGEN
TERRY & GLENDA BECKETT
EBY MANOR FARMS INC.
CONESTOGO AGRI SYSTEMS INC.

METRO HIGHLANDS CLUB
GENEX CANADA
KEN D. FORSTER
DUNDAS ANIMAL HOSPITAL
W S FEED & SUPPLIES LTD.
FLORADALE FEED MILL LTD.
SELECT SIRES GENERATIONS
RKD WEB STUDIOS

DOUG GREEN
QUALITY SEEDS LTD.
BRUCE & SHERRY TELFER
CANWEST DHI
KEN & MARIE MCNABB
ROB FORSTER



Comfort Farms
We wish everyone a successful 2018.

Our cattle are outstanding in their field.

4272 and 4312 Regional Road 69,
RR 1 St. Anns, ON L0R 1Y0
Bruce & Family Craig & Family
905-719-7224 905-957-7553

CDN GENETIC EVALUATION HIGHLIGHTS

APRIL 2018

Some Reshuffling Among Top LPI Guernsey Sires

Newly proven last round, Dairyman Double Dawson experiences the highest LPI gain this round due to production increases and moves from #5 to #3 LPI (tied #2 Fat). His sire, Pine Ridge Double L, also makes a move upward to regain his former #1 LPI position (tied #4 Fat), which forces Trotacre Enhancer Lewis ET back to #2 LPI (#3 Milk, tied #3 Protein). The Top 5 LPI list is completed by Golden J Ronald Grumpy at #4 LPI and Idle Gold E Challenge in #5 LPI spot. Given the implementation of new minimum criteria for official production and type proofs this round, several older bulls now receive an official production proof. Those achieving top 5 ranking include Spring Walk Karis Trumpet at #1 Milk and #5 Protein, Golden J Skipper Gary at #1 Protein and #2 Milk, Trotacre Jay Mr Luxury at #2 Protein and #5 Milk and Ripley Farms Enhancer Reward at #4 Milk. As with last round, the top trio of LPI cows remains unchanged with Glen Haven Lewis Lana at #1 LPI (tied #4 Protein), Eby Manor D L Indy at #2 LPI (#2 Fat) and Lindrian Polite at #3 LPI (#1 Milk, tied #4 Fat, #1 Protein). Now at #4 LPI, Guernsey View Winner's Zuri switches places with Guernsey View Urma's Expense, who rounds out the Top 5 LPI list in #5 position. The highest newly indexed cow this round is Warrindale Dawson Kelly at #37 LPI.

CANADIAN DAIRY NETWORK / RÉSEAU LAITIÉR CANADIEN																
April/Avril 2018																
TOP 5 GUERNSEY HERDS BY LPI / 5 MEILLEURS TROUPEAUX GUERNSEY SELON L'IPV																
(minimum 10 active cows with official LPI) / (minimum de 20 vaches actives avec un IPV officiel)																
Rank Rang	LPI IPV	No. Cows No. Vaches	Name of Farm / Owner Nom de la Ferme / Propriétaire	City Ville	Province	Milk Lait	Fat Gras	Protein Protéine	Fat % % Gras	Prot % % Prot	SCS CCS	CONF	MS SM	F&L P&M	DS PL	RP Cr
1	967	12	BRITTANY CAPLIN	KESWICK RIDGE	NB	256	18	12	0.12	0.05	2.93	3.9	2.8	2.8	1.2	1.4
2	917	16	LINDRIAN FARMS	SURREY	BC	511	15	11	-0.09	-0.07	2.96	2.9	3.2	1.4	-0.1	-0.4
3	849	49	COMFORT FARMS	ST ANNS	ON	110	5	3	0.00	-0.01	2.87	3.0	3.0	1.2	1.0	-0.3
4	834	61	EBY MANOR FARM LTD.	WATERLOO	ON	190	7	7	0.01	0.01	3.05	3.2	2.8	1.7	1.3	1.0
5	751	60	MAPLEHURST FARMS	LYNDEN	ON	59	3	3	0.01	0.02	3	2.8	2.6	1.1	0.9	1.6



Gold Star BREEDER AWARD



Maplehurst Farm

Lynden, ON

Eby Manor Farm

Waterloo, ON

Congratulations on your achievement!

To achieve this honour, a homebred herd will have at least 15 completed records, with classification score average at least 82.5% and BCA 10 points above the National Herd Average for Butterfat and Protein.

EBY MANOR.



GOLDEN GUERNSEY



EBY MANOR DL INDY EX-92-2E

Born: June 12, 2012

Dam: Eby Manor Aaron Indigo -VG

Sire: Pine Ridge Double L ET

3yr 305 8130 M 495 F 6.09% 302 P 3.7% (250-298-260)

4yr 305 9334 M 562 F 6.02% 345 P 3.7% (272-319-283)

5yr Proj. 10095 M 572 F 373P (272-306-283)

EBY MANOR JACKSON FEBRUARY VG-87

Born: December 5, 2013

Dam: Eby Manor Judgement Fran

Sire: Brown Eby Jackson

2yr 305 7704 M 345 F 4.48% 249 P 3.23% (258-233-235)

3yr 305 10771 M 475 F 4.4% 305 P 3.3% (336-293-307)

WE WERE PLEASED TO BE AWARDED THE GOLD STAR BREEDER AWARD AT THE ANNUAL GENERAL MEETING.

DEMAND FOR OUR MILK AND MILK PRODUCTS CONTINUE TO INCREASE ACROSS ONTARIO AND INTO QUEBEC AS CONSUMERS DISCOVER THE QUALITY AND UNIQUENESS OF GOLDEN GUERNSEY MILK.

EBY MANOR INC.

Jim & Ruth Eby
519-664-2560
info@ebymanor.ca

1174 Weeby Place
RR 1, Waterloo, ON N2J 4G8
www.ebymanor.ca

Ben & Sheri Eby
519-664-2819

“MAGIC” COW PRODUCES MILK THAT MAY BE EASIER TO DIGEST

A cow named Magic at the Canada Agriculture and Food Museum has distinguished herself from the rest of the herd – by testing positive for a special form of beta casein protein that may make her milk easier to digest.

Magic — one of two Guernsey cows in a herd of 60 — was tested earlier this year by the Canadian Guernsey Association.

“It’s a gene test – you just pull hair and you can test the DNA,” explains Jennifer Russell, a herds person for the museum, which is a working farm in Ottawa. Russell says the test results revealed that Magic is producing what’s known in the dairy industry as “A2 milk,” which has been enjoying an increased popularity in Canada and other parts of the world.

According to a paper about A2 milk — published by the Canadian Dairy Network (CDN) in 2016 — the genotype of dairy animals is expressed as either A1A1, A1A2, or A2A2, with each copy of the beta casein allele leading to the production of the corresponding type of beta casein. A2A2 cows are the only ones that can be considered producers of “A2 milk” since A1A2 cows will produce milk with a mixture of A1 and A2 beta casein.

Rob Forster, a fieldman for the Canadian Guernsey Association, explains that the majority of cows produce either A1A1 or A1A2 – which is what most consumers are buying in stores. Guernsey cows are one of the breeds with a higher frequency of the A2A2 genome.

Forster says the Canadian Guernsey Association considers this an advantage because there’s a growing belief that A2 milk may be easier for people to digest.

“Right now, a lot of people envision ‘milk is milk is milk’ which really isn’t the case,” says Forster. He adds he’s heard anecdotal accounts of A2 milk improving

human health conditions including Irritable Bowel Syndrome (IBS), skin rashes, and hayfever.

For some individuals — the CDN points to studies that suggest up to 25 per cent of people — a perceived lactose intolerance may in fact be a sensitivity to one of the proteins that are released upon the digestion of A1 milk.

“A proportion of people who believe they have a lactose intolerance might be sensitive to A1 beta casein,” writes Lynsay Beavers and Brian Van Doormaal in their CDN paper. “One human study showed that more gastrointestinal discomfort occurs following the consumption of A1 milk compared to A2 milk.”

Outside of Canada, companies have already started to capitalize on an emerging niche market for A2 milk. A New Zealand-based company, the a2 Milk Company, licenses and markets all A2 products. These products — sold in Australia, China, and the United States — sell for about the same price as organic milk.

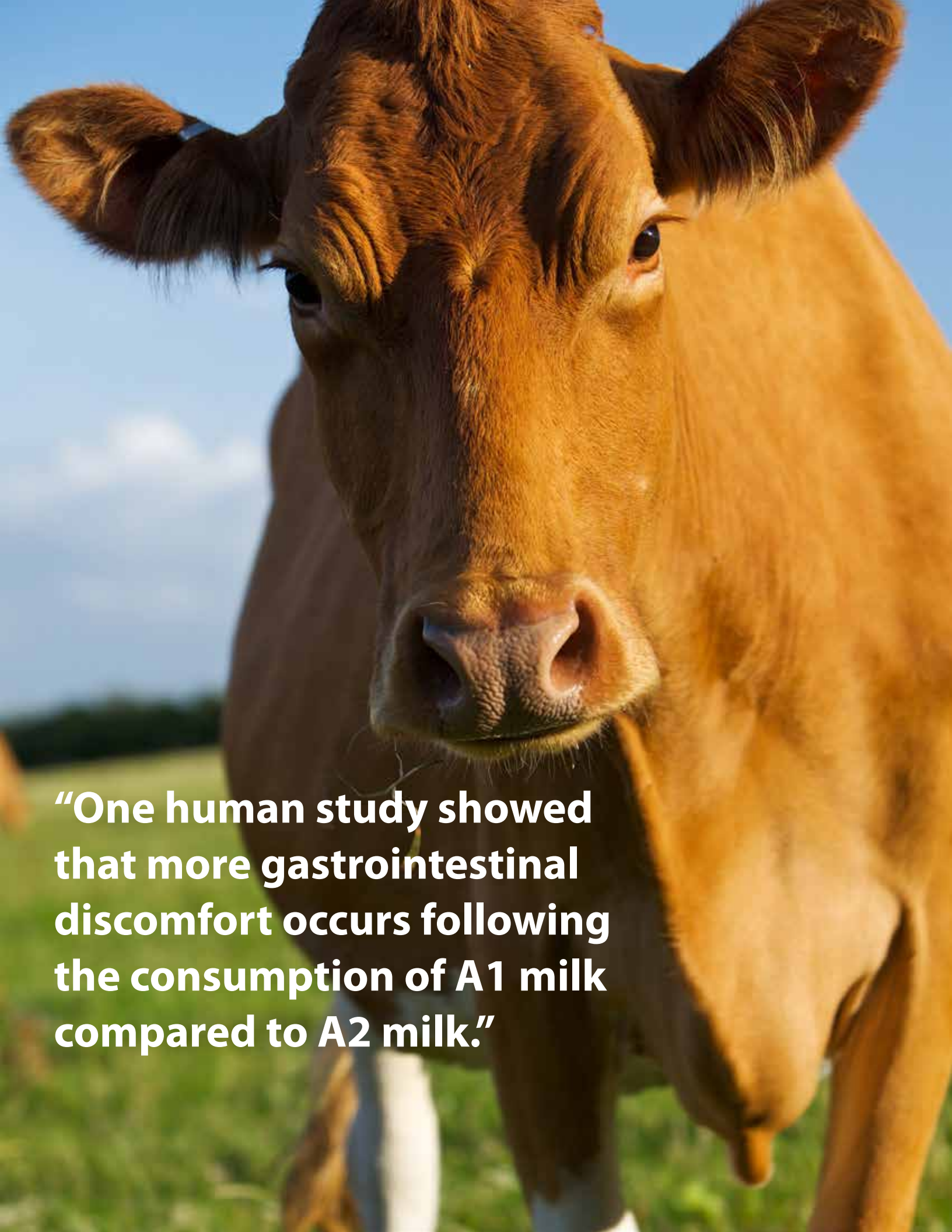
Here in Canada, some small producers are starting to market A2 milk under their own labels; they cannot use “A2” in product names because of copyright restrictions from the a2 Milk Company. One such small supplier is Eby Manor – a Guernsey farm located in Waterloo, Ontario. Eby Manor sells Golden Guernsey Milk — and a number of other dairy products — from its on-site market, and distributes its products in the Greater Toronto Area, Guelph, Hamilton, and Ottawa.

While the A2 phenomenon has not yet infiltrated the mainstream, public consciousness, Forster believes that could soon change.

“It’s starting out as a niche market, but at some point this could become mainstream if it’s advertised and promoted correctly,” he says. “I think there’s more and more people out there that have certain issues with respect to digesting milk; the A2 is not a cure-all, but it’s an option.”

“It’s starting out as a niche market, but at some point this could become mainstream if it’s advertised and promoted correctly.”

- Rob Forster



“One human study showed that more gastrointestinal discomfort occurs following the consumption of A1 milk compared to A2 milk.”

PRODUCTION RECORDS

Production Records completed January - April 2018 and listed by composite BCA

Yearlings

GUCANF12062948	EBY MANOR SHERBERT VICTORY	PB GP	84	1	11	8100	397	4.9	256	3.2	285	280	253	818	EBY MANOR LTD	ON
GUCANF11983689	CALLUMLEA TURLEY DAPHNE	PB G	79	1	10	7363	377	5.1	241	3.3	269	273	246	788	KENNETH MCNABB	ON
GUCANF11902296	COMFORT FARMS GOLDY	PB GP	82	1	9	6897	277	4.0	218	3.2	240	196	214	650	COMFORT FARMS LTD	ON
GUCANF11902301	COMFORT FARMS SHALEINE	PB VG	85	1	10	6648	269	4.0	217	3.3	237	192	217	646	COMFORT FARMS LTD	ON
GUCANF11903159	SPRING ROSE LEGEND DESTINY	75 GP	82	1	10	4871	265	5.4	190	3.9	181	196	198	575	AARON HENHOEFFER	ON
GUCANF11902302	COMFORT FARMS MARB	PB GP	81	1	10	5554	231	4.2	172	3.1	198	165	172	535	COMFORT FARMS LTD	ON
GUCANF11902303	COMFORT FARMS SYNTHIA	PB G	79	1	11	4212	209	5.0	159	3.8	148	147	157	452	COMFORT FARMS LTD	ON

Jr. 2 Year Old

GUCANF12062945	EBY MANOR DAWSON ROSALYN	PB GP	82	2	3	8226	411	5.0	291	3.5	282	280	280	842	EBY MANOR LTD	ON
GUCANF11632483	LINDRIAN LEGEND PATI	PB GP	83	2	3	7964	366	4.6	274	3.4	273	249	263	785	JOHN & LINDA TAMIS	BC
GUCANF11356259	MAPLEHURST LEGEND KINDNESS	PB VG	86	2	0	6649	297	4.5	234	3.5	226	203	223	652	KEN D FORSTER	ON
GUUSAF78004247	COULLEE CREST CARTER LINDY-ET ET	PB VG	87	2	3	6782	282	4.2	216	3.2	227	188	202	617	JOCELYN FORSTER	ON
GUCANF12292427	MAPLEHURST JUDGMENT BRENDA ET ET	PB GP	83	2	0	6146	268	4.4	201	3.3	218	189	201	608	KEN D FORSTER	ON
GUCANF11632484	LINDRIAN PUTZI ASSUALT	PB G	77	2	0	5226	269	5.2	174	3.3	179	186	167	532	JOHN & LINDA TAMIS	BC
GUCANF11902294	COMFORT FARMS MELEFICENT	PB G	78	2	0	4933	211	4.3	159	3.2	165	143	150	458	COMFORT FARMS LTD	ON

Sr. 2 Year Old

GUCANF11553898	EBY MANOR J ELLIE	PB VG	85	2	11	8737	415	4.8	291	3.3	269	255	251	775	EBY MANOR LTD	ON
GUCANF12088225	BEAVERWOOD MR. AMERICA'S SONIA	PB	85	2	7	7733	301	3.9	235	3.0	254	195	216	665	GARY WEST	NB
GUCANF12062938	EBY MANOR PHOENIX POLLY	PB	80	2	6	6901	368	5.3	232	3.4	220	236	207	663	EBY MANOR LTD	ON
GUCANF12031150	DON HAVEN ACHIEVE VICTORY	PB GP	80	2	10	6023	357	5.9	218	3.6	198	233	202	633	JOHN W GORDON	ON
GUCANF12062939	EBY MANOR PHOENIX SHELBY	PB	83	2	6	6333	330	5.2	236	3.7	205	212	215	632	EBY MANOR LTD	ON
GUCANF11632510	WARRINDALE DAWSON MARY	PB GP	83	2	7	7160	319	4.5	230	3.2	224	199	202	625	KYLE & ADRIENNE	ON
GUCANF12088213	BEAVERWOOD BRUCE'S PAULINE	PB	83	2	6	6225	319	5.1	227	3.6	195	199	199	593	GARY WEST	NB
GUCANF11755697	BEAVERWOOD ASSUALT'S GOLDEN	PB	83	2	10	5920	301	5.1	224	3.8	181	185	193	559	GARY WEST	NB

Jr. 3 Year Old

GUCANF12031144	DON HAVEN TITAN VIVIAN	PB VG	85	3	0	7312	411	5.6	278	3.8	237	263	253	753	JOHN W GORDON	ON
GUCANF11859844	GUERNSEY VIEW EXTREME'S ANNE	PB G	78	3	3	7574	365	4.8	276	3.6	220	212	224	656	CEDAR RIDGE FARMS	NB
GUCANF11755670	BEAVERWOOD GARY'S ALYSSA	75	85	3	5	7604	358	4.7	255	3.4	219	207	207	633	GARY WEST	NB
GUCANF12031145	DON HAVEN TITAN VISION	PB VG	85	3	0	6354	326	5.1	229	3.6	206	209	208	623	JOHN W GORDON	ON
GUCANF11755680	BEAVERWOOD PYTHON'S HAYLEY	PB	86	3	5	6672	336	5.0	230	3.5	197	196	190	583	GARY WEST	NB
GUCANF11553893	EBY MANOR WARD JANESSA	PB VG	86	3	3	6792	285	4.2	207	3.0	203	169	174	546	EBY MANOR LTD	ON
GUCANF11755675	BEAVERWOOD ALSTAR'S CAITLYN	PB	83	3	1	5703	313	5.5	215	3.8	171	185	181	537	GARY WEST	NB
GUCANF10996448	COMFORT FARMS MEG	PB GP	83	3	5	6035	268	4.4	218	3.6	173	152	176	501	COMFORT FARMS LTD	ON

Sr. 3 Year Old

GUCANF11715320	CALLUMLEA YOGIBEAR CALYPSO	PB GP	81	3	11	9753	451	4.6	334	3.4	289	265	278	832	KENNETH MCNABB	ON
GUCANF11356218	MAPLEHURST GARY'S TOOPY	PB VG	85	3	11	8417	383	4.5	308	3.7	240	218	246	704	KEN D FORSTER	ON
GUCANF11356215	MAPLEHURST JACKPOT VISION ET	PB VG	88	3	10	7906	395	5.0	286	3.6	220	219	223	662	KEN D FORSTER	ON

PRODUCTION RECORDS

Production Records completed January - April 2018 and listed by composite BCA

GUCANF11755660	BEAVERWOOD PHONZE'S COCO	75		3	11	7899	337	4.3	287	3.6	222	189	226	637	GARY WEST	NB
GUCANF11320694	CEDAR ROCK ATLANTIC LILLY	PB	GP	80	3	10	6383	276	4.3	202	195	166	174	535	WANAMAKER BROTH-	NB
GUCANF11902275	COMFORT FARMS MIA	PB	GP	82	3	6	5741	288	5.0	207	175	174	177	526	COMFORT FARMS LTD	ON
GUCANF11755666	BEAVERWOOD PINTO'S LORRAINE	PB		3	8	5026	241	4.8	161	3.2	150	142	134	426	GARY WEST	NB
GUCANF11755678	BEAVERWOOD ALSTAR'S RACHEL	PB		3	6	4724	221	4.7	148	3.1	138	129	121	388	GARY WEST	NB

4 Year Old

GUCANF11009754	LINDRIAN POLITE	PB	GP	83	4	2	12780	528	4.1	412	350	287	317	954	JOHN & LINDA TAMIS	BC
GUCANF9989541	BROADVIEW ZENA	PB	EX	90	4	10	9773	570	5.8	352	260	305	263	828	EBY MANOR LTD	ON
GUCANF11591063	BROADVIEW APRICOT	PB	VG	85	4	7	9484	520	5.5	315	273	297	254	824	SCOTT GORDON	ON
GUCANF11755652	BEAVERWOOD SPRUCE'S FERN	PB		4	0	9375	431	4.6	316	3.4	260	238	247	745	GARY WEST	NB
GUCANF11755648	BEAVERWOOD POPEYE'S TARA	PB		4	3	9248	372	4.0	335	3.6	255	206	260	721	GARY WEST	NB
GUCANF11755657	BEAVERWOOD PHONZE'S LULU	PB		4	0	8377	376	4.5	318	3.8	234	210	248	692	GARY WEST	NB
GUCANF9989567	BROADVIEW ARLIE	PB	VG	85	4	7	8748	365	4.2	265	237	198	202	637	ROB FORSTER	ON
GUCANF11356219	MAPLEHURST PRADAS WHISK	PB	EX	93	4	1	7440	346	4.7	254	216	199	207	622	KEN D FORSTER	ON
GUCANF11356214	MAPLEHURST PHOENIX TABITHA	PB	EX	90	4	1	7360	355	4.8	248	207	199	197	603	KEN D FORSTER	ON
GUCANF11463028	DON HAVEN ACHIEVE VERMONT	PB	EX	90	4	0	7590	370	4.9	243	210	204	188	602	JOHN W GORDON	ON

5 Year Old

GUCANF11120523	EBY MANOR VANCE TILLY	PB	GP	80	5	6	10052	499	5.0	341	263	261	251	775	EBY MANOR LTD	ON
GUCANF11356189	MAPLEHURST GRUMPY NAGET	PB	EX	91	5	5	7229	362	5.0	255	200	200	198	598	KEN D FORSTER	ON
GUCANF10996403	COMFORT FARMS SIERRA	PB	GP	80	5	6	7916	301	3.8	257	218	167	199	584	COMFORT FARMS LTD	ON

Mature Cow

GUCANF10913632	EBY MANOR LEWIS ESTHER	PB	GP	82	7	5	10996	475	4.3	334	285	253	244	782	EBY MANOR LTD	ON
GUCANF9756136	CALLUMLEA SILVERADO VERNA	PB	VG	85	8	5	9533	477	5.0	340	248	255	248	751	CLARRIDGE NORTH	ON
GUCANF10848136	BEAVERWOOD LOMBARDI'S ALEXIS	PB		6	10	9554	489	5.1	309	3.2	253	260	231	744	GARY WEST	NB
GUCANF10913660	EBY MANOR ROYALTY POSIE	PB	EX	90	6	8	8359	475	5.7	270	217	251	197	665	EBY MANOR LTD	ON
GUCANF11255585	BEAVERWOOD CASPIAN'S EMILY	PB		6	0	8908	333	3.7	279	3.1	244	183	215	642	GARY WEST	NB
GUCANF10848154	BEAVERWOOD KAIN'S ELLA	PB		6	4	7818	394	5.0	294	3.8	202	207	213	622	GARY WEST	NB
GUCANF10848142	BEAVERWOOD LEGION'S ISLA	PB		6	11	7553	377	5.0	261	3.5	200	203	193	596	GARY WEST	NB
GUCANF9594208	MAPLEHURST MOREY SHINY	PB	VG	87	6	9	7460	316	4.2	242	203	174	185	562	KEN D FORSTER	ON
GUCANF10941436	DON HAVEN LEGION VICTORIA	PB	VG	87	7	2	6439	300	4.7	237	184	173	189	546	JOHN W GORDON	ON
GUCANF1120515	EBY MANOR VANCE RAE	PB	VG	85	6	4	6949	292	4.2	238	184	157	178	519	BRETT ALDERS	ON

CANADIAN GUERNSEY ASSOCIATION ANNUAL AWARDS 2017

MARSHDENE FARMS AWARD

To the Highest Lifetime Butterfat Producer completing a record in 2017

MAPLEHURST BOLERO VELVET (VG)

3286 kg in 10 lactations

Ken D Forster, Lynden, ON

CALLUMLEA FARM AWARD

To the Highest Lifetime Protein Producer completing a record in 2017

BIG SPRING DECISION WANDA (VG)

2341 kg in 8 lactations

Eby Manor Ltd, Waterloo, ON

GARTMORE FARMS AWARD

For the Highest Increase in BCA over the previous year (2015–2016)

EBY MANOR LTD, WATERLOO, ON

2015 BCA 626 – 2015 BCA 721 – Increase **95**

LINDRIAN FARMS AWARD

For the Highest Butterfat Herd Average (kg) 2016

SCOTT GORDON, ROCKWOOD, ON

7 records 8042 416 284 BCA 274M **254F** 245P

CHINOOK CREST DAIRY AWARD

For the Highest Protein Herd Average (kg) 2016

LINDRIAN FARMS, SURREY, BC

15 records 8829 394 303 BCA 280M 249F **270P**

LINDLEY FARM AWARD

For the Highest Composite Breed Class Average 2016

LINDRIAN FARMS, SURREY, BC

BCA 280M 249F 270P = Composite BCA Total **799**

GUERNSEY CATTLE BREEDERS' ASSOCIATION OF ONTARIO ANNUAL AWARDS 2017

Ontario Guernsey Association

*Awarded to the Breeder and Owner of the **Grand Champion***

***Cow** at 2017 Ontario Shows*

Based on lifetime records

MAPLEHURST LES ZELDA (VG-86)

Grand Champion National & Rockton Show 2017

12611M 490F 383P BCA 262M 205F 228P

Robert Forster, Lynden, ON

Ontario Guernsey Association Award for highest Butterfat Production (kg)

EBY MANOR VANCE FRAN (VG-85)

5-1 12441M **571F** 4.6% 385P 3.1% BCA 329M 304F 285P

Eby Manor Ltd, Waterloo, ON

Ontario Guernsey Association Award for highest Protein Production (kg)

EBY MANOR YOGI WYNN (GP-82)

4-11 11888M 546F 4.6% **407P** 3.4% BCA 316M 289F 304P

Eby Manor Ltd, Waterloo, ON

*Ontario Guernsey Association Award for the cow with the **Highest BCA***

Milk + Fat + Protein

EBY MANOR GARY SASHA

2-0 9851M 440F 4.5% 325P 3.3% BCA 342M 306F 316P

Total Breed Class Average: 964

Eby Manor Ltd., Waterloo, ON

CANADIAN CLASS LEADERS

Based on Breed Class Average January - December 2017 Records

BUTTERFAT

Mature

LINDRIAN PIPER BEAR ET 199 (EX-90)

11203 540 391 BCA 312M **303F** 305P

John & Linda Tamis, Surrey, BC

Five Year Old

EBY MANOR VANCE FRAN (VG-85)

12441 571 385 BCA 329M **304F** 285P

Eby Manor Ltd, Waterloo, ON

Four Year Old

EBY MANOR D L INDY (EX-92)

9334 562 345 BCA 272M **319F** 283P

Eby Manor Ltd., Waterloo, ON

Three Year Old

EBY MANOR NINJA IDAIRY (G-79)

9399 488 317 BCA 301M **305F** 286P

Eby Manor Ltd, Waterloo, ON

Two Year Old

EBY MANOR GARY SASHA

9851 440 325 BCA 342M **306F** 316P

Eby Manor Ltd, Waterloo, ON

Yearling

EBY MANOR DAWSON WRYLNN (G-78)

8894 436 290 BCA 301M **297F** 276P

Eby Manor Ltd, Waterloo, ON

PROTEIN

Mature

LINDRIAN PIPER BEAR ET 199 (EX-90)

11203 540 391 BCA 312M 303F **305P**

John & Linda Tamis, Surrey, BC

Five Year Old

GLEN HAVEN DYNAMIC MEG (VG-88)

12127 493 405 BCA 339M 275F **319P**

Glen Haven Farms, Crysler, ON

Four Year Old

GUERNSEY VIEW EXILE'S ZARA (VG-86)

9979 531 392 BCA 280M 293F **308P**

Cedar Ridge Farms Ltd, Keswick Ridge, NB

Three Year Old

GREENBROOK CANDY BLUE SPRUCE

(GP-83)

9594 486 349 BCA 295M 293F **301P**

Eby Manor Ltd, Waterloo, ON

Two Year Old

EBY MANOR GARY SASHA

9851 440 325 BCA 342M 306F **316P**

Eby Manor Ltd, Waterloo, ON

Yearling

EBY MANOR DAWSON WRYLNN (G-78)

8894 436 290 BCA 301M 297F 276P

Eby Manor Ltd, Waterloo, ON

80 TONNE COWS

		#LAC	MILK	FAT	PROT	OWNER	PROV
REDNGOLD COLUMBUS DAWN	VG	11	114824	5429	4283	ALAN SPENCE	ON
EBY MANOR JORDAN DEKOTA	GP	13	107818	5467	3859	EBY MANOR LTD	ON
LINDRIAN MAGICMAN POPPY	GP	7	102609	4685	3681	JOHN & LINDA TAMIS	BC
MAPLEHURST KINGS LILIAN	EX	10	90845	3965	3051	ROBERT FORSTER	ON
MAPLEHURST BEST SATINA	VG2	8	86583	3367	2622	KEN D FORSTER	ON
BEAVERWOOD MARION 2		13	84827	3658	3029	GARY WEST	NB
MAPLEHURST WARDEN BIANCA	VG	5	84347	3804	3023	KEN D FORSTER	ON
MAPLEHURST FALCON CANARY	GP	6	81997	3374	2930	PETER NOOYEN	ON
LINDRIAN PATSY LAMAR 27	GP	8	81746	3692	2658	JOHN & LINDA TAMIS	BC
LINDRIAN PIZZAZ	VG	7	81210	3473	2739	JOHN & LINDA TAMIS	BC
BROWN EDEN FAYVOR GEM	VG2	8	81187	3593	2757	BROWN EDEN FARMS	ON
MAPLEHURST FAYETTE MARSHA	EX	9	81102	4076	3013	ALAN SPENCE	ON

SUPERIOR PRODUCTION AWARDS

BASED ON 2017 PRODUCTION RECORDS

Butterfat + 475 kg

EBY MANOR VANCE FRAN (VG-85)

5 yr 12441 **571** 4.6% 385 3.1%
BCA 329M 304F 285P
Eby Manor Ltd., Waterloo,, ON

EBY MANOR D L INDY (EX-92)

4 yr 9334 **562** 6.0% 345 3.7%
BCA 272M 319F 283P
Eby Manor Ltd, Waterloo, ON

EBY MANOR WYNN (GP-82)

4 yr 11888 **546** 4.6% 407 3.4%
BCA 316M 289F 304P
Eby Manor Ltd., Waterloo, ON

LINDRIAN PIPER BEAR ET 199 (EX-90)

6 yr 11203 **540** 4.8% 391 3.5%
BCA 312M 303F 305P
John & Linda Tamis, Surrey, BC

GUERNSEY VIEW EXILE'S ZARA (VG-86)

4 yr 9979 **531** 5.3% 392 3.9%
BCA 280M 293F 308P
Cedar Ridge Farms Ltd., Keswick Ridge,
NB

BIG SPRING LEWIS JAMACIA (VG-87)

6 yr 11305 **527** 4.7% 363 3.2%
BCA 300M 280F 271P
Excelsior Farms Inc., Wyoming, ON

EBY MANOR VANCE WESTIN (GP-83)

4 yr 9622 **502** 5.2% 343 3.6%
BCA 287M 295F 288P
Eby Manor Ltd., Waterloo, ON

DON HAVEN YOGI'S VANA (VG-85)

5 yr 8763 **494** 5.6% 290 3.3%
BCA 249M 279F 232P
Eby Manor Ltd., Waterloo, ON

GLEN HAVEN DYNAMIC MEG (VG-88)

5 yr 12127 **493** 4.1% 405 3.3%
BCA 339M 275F, 319P
Glen Haven Farms, Chrysler, ON

EBY MANOR NINJA IDAIRY (G-79)

3 yr 9399 **488** 5.2% 317 3.4%
BCA 301M 305F 286P
Eby Manor Ltd, Waterloo, ON

Protein + 370 kg

EBY MANOR WYNN (GP-82)

4 yr 11888 546 4.6% **407** 3.4%
BCA 316M 289F 304P
Eby Manor Ltd., Waterloo, ON

GLEN HAVEN DYNAMIC MEG (VG-88)

5 yr 12127 493 4.1% **405** 3.3%
BCA 339M 275F 319P
Glen Haven Farms, Chrysler, ON

GUERNSEY VIEW EXILE'S ZARA (VG-86)

4 yr 9979 531 5.3% **392** 3.9%
BCA 280M 293F 308P
Cedar Ridge Farms Ltd, Keswick Ridge,
NB

LINDRIAN PIPER BEAR ET 199 (EX-90)

6 yr 11203 540 4.8% **391** 3.5%
BCA 312M 303F 305P
John & Linda Tamis, Surrey, BC

EBY MANOR VANCE FRAN (VG-85)

5 yr 12441 571 4.6% **385** 3.1%
BCA 329M 304F 285P
Eby Manor Ltd, Waterloo, ON

Honour Roll Additions Butterfat

Yearling ~ 6th

EBY MANOR DAWSON WRYLNN

8894 **436** 4.9%
Eby Manor Ltd, Waterloo, ON

Yearling ~ 10th

EBY MANOR GRUMPY PAIGE

6981 **404** 5.8%
Eby Manor Ltd, Waterloo, ON

Jr Two Year Old ~ 8th

EBY MANOR GARY SASHA

9851 **440** 4.5%
Eby Manor Ltd, Waterloo, ON

Sr Two Year Old ~ 4th

EBY MANOR ACHIEVE JANE A

8402 **437** 5.2%
Eby Manor Ltd., Waterloo, ON

Four Year Old ~ 5th

EBY MANOR D I LINDY

9334 **562** 6.0%
Eby Manor Ltd, Waterloo, ON

Five Year Old ~ 3rd

EBY MANOR VANCE FRAN

12441 **571** 4.6%
Eby Manor Ltd., Waterloo, ON

Mature Cow ~ 6th

Lindrian Piper Bear ET 199

11203 **540** 4.8%
John & Linda Tamis, Surrey, BC

Mature Cow ~ 8th

Big Spring Lewis Jamacia

11305 **527** 4.7%
Excelsior Farms Inc., Wyoming, ON

Honour Roll Additions Protein

Four Year Old ~ 4th

EBY MANOR WYNN

11888 **407** 3.4%
Eby Manor Ltd., Waterloo, ON

Five Year Old ~ 4th

GLEN HAVEN DYNAMIC MEG

12127 **405** 3.3%
Glen Haven Farms, Chrysler, ON

Five Year Old ~ 9th

EBY MANOR VANCE FRAN


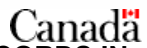
12441 **385** 3.1%
Eby Manor Ltd., Waterloo, ON

CLASSIFICATIONS

(JANUARY - APRIL 2018)

GUCANF9594203	MAPLEHURST DYNAMIC LAUGH	EX	93	2E	KEN D FORSTER	ON
GUCANF9594212	MAPLEHURST YB LYDIA	EX	92	3E	ROBERT FORSTER	ON
GUCANF11553846	EBY MANOR PRADA PORCHA	EX	91	2E	EBY MANOR LTD	ON
GUCANF11356202	MAPLEHURST LYNNDILLS ROSA	EX	91	2E	KEN D FORSTER	ON
GUCANF11120500	EBY MANOR MOREY SPECIAL	EX	90	4E	EBY MANOR LTD	ON
GUCANF11356203	MAPLEHURST LYNNDILLS TRUEY	EX	90	2E	KEN D FORSTER	ON
GUCANF9594223	MAPLEHURST JUDGMENT ROSIE	EX	90	2E	KEN D FORSTER	ON
GUCANF11255594	BEAVERWOOD CASPIAN'S AURORA	EX	90	2E	LISA FREEZE	NB
GUCANF11356234	MAPLEHURST GRUMPY BINOO	EX	90	1E	KEN D FORSTER	ON
GUCANF11632438	LINDRIAN LUCY PYTHON	EX	90	1E	JOHN & LINDA TAMIS	BC
GUCANF11356260	MAPLEHURST LEGEND WISE	VG	88		KEN D FORSTER	ON
GUCANF11356253	MAPLEHURST LEGEND CUTIE	VG	88		KEN D FORSTER	ON
GUCANF11356248	MAPLEHURST LEGEND GLADYS	VG	88		KEN D FORSTER	ON
GUCANF11356240	MAPLEHURST LES LOGIC	VG	88		KEN D FORSTER	ON
GUCANF12292424	MAPLEHURST LEGEND WINTER	VG	88		KEN D FORSTER	ON
GUCANF12062934	EBY MANOR PHOENIX LUCY	VG	87		EBY MANOR LTD	ON
GUCANF11356249	MAPLEHURST ARCHIE BINGO	VG	87		KEN D FORSTER	ON
GUCANF11790176	CEDAR ROCK BIGSHOTTOO DIME	VG	87		WANAMAKER BROTHERS	NB
GUCANF11356230	MAPLEHURST GARY NICE	VG	87		KEN D FORSTER	ON
GUCANF11356252	MAPLEHURST LEGENDS LACI	VG	87		KEN D FORSTER	ON
GUCANF11553891	EBY MANOR JACKSON FEBRUARY	VG	87		EBY MANOR LTD	ON
GUCANF11356251	MAPLEHURST DAWSON NORA	VG	87		KEN D FORSTER	ON
GUCANF11356256	MAPLEHURST GEO ROSEBUD	VG	86		KEN D FORSTER	ON
GUCANF12062942	EBY MANOR GRUMPY JANEY	VG	85		EBY MANOR LTD	ON
GUCANF10996447	COMFORT FARMS LAUREN	VG	85		COMFORT FARMS LTD	ON
GUCANF11632468	LINDRIAN PASSALT	VG	85		JOHN & LINDA TAMIS	BC
GUCANF11632429	LINDRIAN PATCHY PYTHON	VG	85		JOHN & LINDA TAMIS	BC
GUCANF11356224	MAPLEHURST PRADA LEADER	VG	85		KEN D FORSTER	ON
GUCANF12292444	MAPLEHURST PILOT NIMBLE	VG2	88		KEN D FORSTER	ON
GUCANF12292452	MAPLEHURST LEGEND FAMOUS	VG2	87		KEN D FORSTER	ON
GUCANF12292442	MAPLEHURST LEGENDS LEGACY	VG2	87		KEN D FORSTER	ON
GUCANF12292435	MAPLEHURST GOTCHA RITA	VG2	86		KEN D FORSTER	ON
GUCANF12292440	MAPLEHURST PILOT KAYLEE	VG2	86		KEN D FORSTER	ON
GUCANF12292447	MAPLEHURST LEGEND FOUND	VG2	86		KEN D FORSTER	ON
GUCANF12062971	EBY MANOR JAGUAR ERICA	VG2	86		EBY MANOR LTD	ON
GUCANF12292446	MAPLEHURST LEGEND NELLIE	VG2	85		KEN D FORSTER	ON
GUCANF12292430	MAPLEHURST PIES BETSY	VG2	85		KEN D FORSTER	ON
GUCANF12292437	MAPLEHURST GOTCHA ABBY	VG2	85		KEN D FORSTER	ON
GUCANF11788450	REDNGOLD LEGEND CONSTELLATION	VG2	85		ALAN SPENCE	ON
GUCANF12236374	LINDRIAN PILOT DALIE	GP	84		JOHN & LINDA TAMIS	BC
GUCANF12292433	MAPLEHURST GARY LISA	GP	84		KEN D FORSTER	ON

GUCANF11902316	COMFORT FARMS JENELLE	GP	83	JENNIKA FULLER	NS
GUCANF12062967	EBY MANOR PILOT SIERRA	GP	83	EBY MANOR LTD	ON
GUCANF11902286	COMFORT FARMS AZELIA	GP	83	COMFORT FARMS LTD	ON
GUCANF11902310	COMFORT FARMS DIAMOND	GP	83	LEWIS LAND AND STOCK	ON
GUCANF12292432	MAPLEHURST GEO LADDIE	GP	83	KEN D FORSTER	ON
GUCANF11902309	COMFORT FARMS COURTNEY	GP	82	COMFORT FARMS LTD	ON
GUCANF11788448	REDNGOLD GRUMPY COMET	GP	82	ALAN SPENCE	ON
GUCANF12236372	LINDRIAN DEASHA CASPIAN	GP	82	JOHN & LINDA TAMIS	BC
GUCANF12062969	EBY MANOR GOTCHA LIZA	GP	82	EBY MANOR LTD	ON
GUCANF12292431	MAPLEHURST GEO VESUVIUG	GP	82	KEN D FORSTER	ON
GUCANF12292449	MAPLEHURST PYTHON NIFTY	GP	82	KEN D FORSTER	ON
GUCANF10996415	COMFORT FARMS MANDY	GP	82	COMFORT FARMS LTD	ON
GUCANF12292448	MAPLEHURST JAGUAR LAVERNE	GP	82	ROBERT FORSTER	ON
GUCANF11902305	COMFORT FARMS AUDREY 2	GP	81	COMFORT FARMS LTD	ON
GUCANF11902314	COMFORT FARMS GLADYS 2	GP	81	COMFORT FARMS LTD	ON
GUCANF11553877	EBY MANOR NINJA IDAIRY	GP	81	EBY MANOR LTD	ON
GUCANF12062944	EBY MANOR DAWSON WRYLNN	GP	81	EBY MANOR LTD	ON
GUUSAF78003329	PEACEFULL VALLEY NIRVANA NIBBL	GP	81	LISA FREEZE	NB
GUCANF11902319	COMFORT FARMS MIKHAELA	GP	80	COMFORT FARMS LTD	ON
GUCANF12062977	EBY MANOR NAVAJO KENZY	GP	80	EBY MANOR LTD	ON
GUCANF12062968	EBY MANOR CASPIAN KARA	GP	80	EBY MANOR LTD	ON
GUCANF12127187	EXCELSIOR DOUBLE L JOYSTICK	GP	80	EXCELSIOR FARMS INC	ON
GUCANF109660241	CHARLUSON DAWSON LADY	GP	80	FERME CHARLUSON INC.	QC
GUCANF11902324	COMFORT FARMS LUMEN	GP	80	COMFORT FARMS LTD	ON
GUCANF11902304	COMFORT FARMS ANARIA	G	79	COMFORT FARMS LTD	ON
GUCANF11902320	COMFORT FARMS SHERYL	G	79	COMFORT FARMS LTD	ON
GUCANF11902308	COMFORT FARMS ELLERY	G	79	COMFORT FARMS LTD	ON
GUCANF11902311	COMFORT FARMS ELIANNA	G	78	COMFORT FARMS LTD	ON
GUCANF11902315	COMFORT FARMS MADELYN	G	78	COMFORT FARMS LTD	ON
GUCANF12062972	EBY MANOR GOTCHA LENA	G	78	EBY MANOR LTD	ON
GUCANF11902322	COMFORT FARMS MARION	G	76	COMFORT FARMS LTD	ON
GUCANF11755689	BEAVERWOOD LEGEND'S DANDY	G	75	MICHAEL B SANDESON	NS
GUCANF11902317	COMFORT FARMS JENINE	G	73	COMFORT FARMS LTD	ON
GUCANF11902321	COMFORT FARMS POLARIS	G	72	COMFORT FARMS LTD	ON


 Government of Canada / Gouvernement du Canada
 

AVERAGE PRODUCTION BY BREED BASED ON OFFICIAL - SUPERVISED RECORDS IN CANADA
2008 - 2017
GUERNSEY

	Number of Records	Milk	Fat		Protein		BCA		
		kg	kg	%	kg	%	Milk	Fat	Protein
2017	317	7,389	351	4.77	254	3.46	222	210	214
2016	351	7,086	331	4.69	241	3.42	214	199	205
2015	384	6,730	313	4.67	228	3.40	203	189	194
2014	370	6,759	315	4.69	231	3.43	205	191	197
2013	375	6,952	322	4.64	239	3.45	211	195	204
2012	374	6,831	313	4.60	234	3.44	207	190	200
2011	371	7,062	322	4.57	241	3.42	216	196	207
2010	357	6,891	310	4.51	235	3.43	208	187	200
2009	419	6,812	310	4.56	233	3.43	205	186	198
2008	415	6,820	305	4.51	234	3.45	208	186	200

GRASS IS GREENER AT

Maplehurst

OUR RECENT CLASSIFICATION:

14 EX, 45 VG, 3 GP

PHOENIX RISES TO THE TOP – 2 SISTERS WENT EXCELLENT!



MAPLEHURST PHOENIX BLAZE (EX-90)

3-2 305 6319 323 5.1 226 3.6



MAPLEHURST PHOENIX FEATHERS (EX-90)

3-4 305 7706 356 4.6 233 3.0



NATIONAL GUERNSEY SHOW
PREMIER BREEDER & EXHIBITOR
THANK YOU TO OUR SHOW TEAM!

THANK YOU TO ALL PURCHASERS OF MAPLEHURST LIVESTOCK AND EMBRYOS THIS PAST YEAR.

Maplehurst Farm

KEN & CHRIS FORSTER & FAMILY // ROB & JOCELYN FORSTER

278 Hwy 52, Lynden, Ontario, L0R 1T0

Phone: 905-304-0131, holycow1952@live.ca

www.facebook.com/MaplehurstFarms/ 

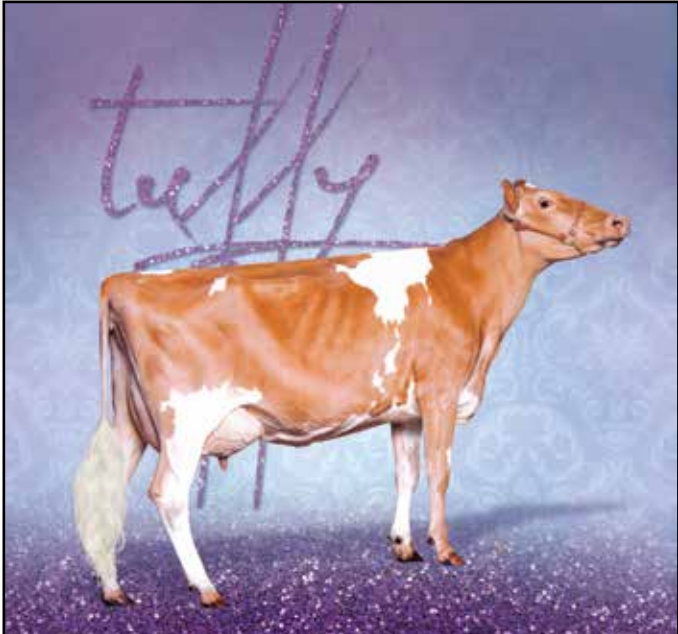


**WENTWORTH-NIAGARA
GUERNSEY CLUB PICNIC**

SATURDAY, JULY 21, 2018

**DAVE & SHIELA LINDSAY'S
3881 RAINHAM RD, SELKIRK, ON**

**ONTARIO BREEDER CUP AWARDS
WILL BE PRESENTED.**



RednGold Guernseys

Alan Spence
redngoldguernseys@gmail.com
642 Aberdeen Rd. East
Vankleek Hill, Ontario K0B 1R0
(613) 678-6225





FEE SCHEDULE

JANUARY 1, 2018

Membership:	Fee
Annual	\$85.00
Registration:	
0 to 3 months	\$15.00
3 to 6 months	\$18.00
6 to 12 months	\$40.00
12 to 24 months	\$50.00
24 months and over	\$60.00
Females 50% Purity or Less	\$11.00
Additional fee for non-members (No Extra Fee for <50% Animals)	\$25.00
Registration of Imported Animal	\$26.00
Transfer:	
Transfer of Ownership	\$25.00
Bulk Transfer (15+ animals)	\$10.00
Transfer within Family	\$10.00
Whole Herd Transfer within Family	\$250.00
Embryo Registry Work:	
Recovery	\$10.00
Freezing	\$5.00
Transfer (export only)	\$50.00
Other Fees:	
Duplicate Certificate	\$17.00
Registration of Lease	\$22.00
Registration of Prefix	\$22.00
Transfer of Prefix	\$22.00
Registration of Tattoo Letters	\$22.00
Transfer of Tattoo Letters	\$22.00
Extended Pedigree - 3 gen	\$20.00
Extended Pedigree - 4 gen	\$25.00

A SMALL PART OF THE MAPLEHURST HERD

HOME OF 2017 NATIONAL CHAMPIONS *from A TO Z*



BROADVIEW LEVI **ARLENE**

Junior Champion 2017 National Guernsey Show
Dam: Broadview Arlie VG-85
3yr old record: 8979kg milk, 394Kg F, 270kg P
Thanks to Rob Beynon for making Arlie available



MAPLEHURST LES **ZELDA** VG-89

Grand Champion 2017 National Guernsey Show
3yr old projection – 8741kg milk, 339kg F, 277kg P
Congratulations to the Canadian Agriculture
Museum in Ottawa for recently purchasing
Zelda as their new foundation Guernsey animal.



CONGRATULATIONS

to Jocelyn and Pandora for their
successful 2017.

1st Junior Yearling and Reserve Junior Champion – Canadian National Guernsey Show
1st Interbreed Junior Yearling – Brant County 4-H show
3rd Interbreed Junior Yearling – West Niagara 4-H show
3rd Interbreed Junior Yearling – Rockton 4-H show
4th Coloured Breeds calf – TD Scotiabank Classic



ROB, JULIE, JESSE & JOCELYN FORSTER
276 Highway 52, Lynden, ON L0R 1T0
rforster@guernseycanada.ca