

December 2021

# Guernsey NEWS



## President's Message

Guernsey board members were saddened to learn that Jessie Weir, would no longer be available to continue her role as administrator for our breed. This is a position which she performed with excellence for the past 11 years. Eastgen's manager, Brian O'connor, informed us that Jessie would be assuming the role as his new assistant and that Eastgen did not have anyone available to take on the administrative work for Guernsey.

We greatly value the relationship that we have benefited from with Eastgen, and in particular with Jessie Weir. I know that you would be more than happy to join me in a heartfelt , thank you to Jessie for the years of service she gave us. We genuinely congratulate Jessie for her new position with Eastgen and wish her all the best moving forward.

This brings us to a time for new beginnings. Paul McLeod the Vice President of Canadian Guernsey and myself have been in discussion with Holstein Canada regarding the possibility of their organization taking on the administrative duties of Guernsey. We feel that this could be a natural fit for us as Holstein currently does our registrations, transfers and classifications. Holstein has agreed to develop a proposal for our Guernsey Boards consideration. Eastgen has assured us that they will be available to assist us in transitioning to another administrator.

We are grateful for Russell Gammon, our field rep, for the assistance, guidance and stability which he provides for our Association.

In November, the Forster family wound down their dairy operation, selling their famed Maplehurst Guernsey herd. Congratulations for the many achievements they have attained over the years with their herd, climaxing with a highly successful sale. It is difficult to envision the Guernsey breed without Maplehurst.

However, the sale of their cattle created an opportunity for new breeders to acquire high quality guernseys. Two new startups are the Marlin Martin family near Conestogo and the Kyle Horst family near Elmira. They are excited to be part of the guernsey fraternity and we wish them well with their new breed.

The Maplehurst sale has again confirmed the high interest and enthusiasm for Guernsey cattle. These are indeed exciting times for the Guernsey Breed.

*Wishing all a Very Merry Christmas and a Happy, Healthy and Prosperous New Year.*

**Jim Eby**  
President



---

Canadian Fieldman: Russell Gammon  
Email: rggammon1@gmail.com  
Phone: 226-751-3618

Registrar Contact Information:  
Canadian Guernsey, P O Box 610  
Brantford, ON, N3T 5R4.  
For general inquires please call Janine  
Eygenraam at 1-855-756-8300, Ext 283  
or guernsey@holstein.ca

For DNA or genomic testing inquires,  
Amy Earle or parentageresearch@  
holstein.ca

---



# Report from the “Fergus Office” of the CGA

## ALL OF A SUDDEN....

Yes, all of a sudden we have kicked into overdrive! Was this very rapid shifting of gears due to the Maplehurst Sale alone?

Thankfully, the sale of the Forster's storied herd is an integral part of an explosion of interest in the Guernsey breed that looks like it has sustaining “legs”!!!!

In recent weeks we had a conversation with a young woman from Manitoba who is determined that Guernseys will be added back into her family's sizable dairy herd.

We had a great phone conversation with a member of the family who operate Promise Valley Farm on Vancouver Island. They are rolling into production with their dairy plant, an element of which is a milk dispenser! They are also expanding a social media presence with top quality photos.

A number of people have expressed interest in the Maplehurst sale who we would never have dreamed would have an interest in Guernseys based on their commitment to other breeds.

By the time you read this we'll know how the big sale went. The overall number of people who expressed an interest in the sale was amazing-both from within Canada and the USA!

There are two young bulls still in isolation at Semex, one of them a son of the 95-point Malt cow, now a two-time Supreme Champion at Louisville! Newsflash: *Malt has just*

*scored 96 points at Valley Gem!*

Java and Indigo calves are looking good and drawing attention.

We are thrilled to welcome the Martin family near Waterloo to the Guernsey ranks! They bring another dairy family with them!

The Martin's purchased a sizable number of great cows from the Forster herd and had a thrilling first classification in early November. They have also purchased foundation cows in the Midwest USA and a few choice head in Ontario.

Two major cattle moving companies, one in Ontario and one in Quebec have indicated a rising tide of interest in Guernseys which they are set to fill!

The establishment of medium to long term goals for the Guernsey breed has been met with two thumbs up in many corners! You as a Board did a great job refining the draft goals prepared by staff!

They read very, very well!

We enter winter on a Guernsey high!

We say that because we know the sale to be held in a few hours will be a huge success and propel us forward!

**Russell G (For Guernsey?) Gammon**  
*National Guernsey Fieldman*

# Goals for the Guernsey Breed

- **Increase the number of members** to 75 over the next three years.
- **Increase the number of registrations** to 500 per year over the next three years.
- **Increase national average production** to 375 kgs butterfat and 275 kgs protein by 2026.
- **Increase the number of Guernsey animals available for sale** through expanded use of embryo transfer, IVF, sexed semen, and cattle sales.
- **Continue to support and encourage production of Guernsey dairy products** by assisting producers to access high quality genetics. Continue to market the quality of the Guernsey cow, especially her milk.
- Increase the number of animals in the breed genomic tested and classified.
- Reduce and eventually eliminate monetary dependency on investment income.

## Classification Schedule



**Early December**  
**ON** - Waterloo  
**QC** - Kamouraska  
**QC** - [MR] North Shore Central

**Mid December**

**ON** - [MR] Northumberland  
**QC** - [MR] Quebec North Central  
**QC** - Levis, Quebec, Montmorency

**Late December**  
**QC** - [MR] Portneuf

**January**  
**ON** - [MR] Peterborough, Ontario Central  
**ON** - Oxford  
**QC** - [MR]- Lac St-Jean, Roberval, Lapointe, Chicoutimi, Vaudreuil, Huntingdon  
**QC** - Riviere-du-Loup, Rimouski, Temiscouata, Matapedia, Matane, Bonaventure  
**AB**

*\*This schedule is subject to change within a 1-2 week period\**

**Please submit possible syndicate program pedigrees to Russell Gammon.**



# Maplehurst

## SALE A HUGE SUCCESS!

### SALE AVERAGE \$3225!!!

There are always two ways to regard events that happen in life.

The Guernsey family in Canada and beyond could be sad about the autumn 2021 dispersion of the storied Maplehurst herd owned by the Forster family of Lynden, Ontario.

Four generations of Forsters have worked with Guernseys since the establishment of the herd in 1929 with animals from Wisconsin, USA. During those 92 years the family has known great success with high production awards, Master Breeder honours, countless Championship victories, abundant sales of quality breeding stock, use of the herd's milk to create award-winning dairy products, sales of young Maplehurst sires to AI, demand for Maplehurst cattle at leading sales and decades of leadership by multiple generations of the Forster family with the breed association.

On the other hand the lead up to the sale and the actual sale itself and the follow up proved that demand for top quality Guernseys is booming!

Before the sale Ken Forster and family sold a large portion of the milking herd to Marlin Martin and family of Waterloo, Ontario. The Martins have now converted their dairy herd to Guernseys so that he can be a valued supplier of Golden Guernsey milk to processors working with Guernsey product lines.

Before the sale, phones were ringing and private messages flying about the sale itself and individual animals in the sale. Interest was spectacular and sustained from across Canada and the USA with comments offered by folks outside of North America too! A flat out circus, in a great way!

The sale itself on November 11th represented a hybrid mix of live and online action. The Boulet family of Montmagny,

Quebec were selected as co-sale managers along with Jeff Stephens a cattle marketing pro who is a dairy and beef owning neighbour of Forsters.

All the cattle stayed home at the farm west of Hamilton, Ontario. The live portion of the sale and the hub for online bidding was in place at Ancaster Fairgrounds about three kilometers south of Maplehurst.



*Pierre Boulet and Murray Reissner launch the ship!*

The world-renowned Pierre Boulet, family leader of Encans Boulet served as auctioneer. Murray Reissner, former sire analyst for the Semex family of companies and a long term family friend of the Forsters served as capable pedigree reader.

Action started fast and became even faster as the sale went on. Given the sale of many milking age females to the Martin family and a few other buyers the sale offering consisted of a fanastically good group of heifers and a handful of cows with just under 50 head sold on November 11<sup>th</sup>.

Pre-sale interest turned into a firestorm of activity on sale day! At sale time over 200 head of Jerseys were on site at Ancaster Fairgrounds as the National Jersey show was set for November 12 and 13. Numerous Jersey owners popped

into the Maplehurst sale. Once the dust had settled they and folks in the barns were deeply impressed by the overall price level and extreme demand for Guernseys.

In total there were 15 different buyers for the offering, some established Guernsey owners and some brand new to the breed. Sale cattle were dispersed to British Columbia, Ontario and Quebec in Canada and US states of Wisconsin, Ohio, Pennsylvania, and Illinois.

We know that there were numerous other bidders who were unable to add cattle to their herds on sale day but who retain a keen interest in the breed.

A main driver of sale success was the Kooyman family of Westcoast Farms at Chiiliwack, British Columbia. They purchased 20 head! Westcoast has been assembling a Guernsey herd as part of their extensive dairy cattle portfolio with imports from the USA. There are definite plans to expand their Guernsey-specific operation. Two head sold for over \$5000 both at \$5100. Both of these animals were bought by Westcoast. Another ten head sold for over \$4000!! Westcoast purchased three of the top ten.

The two high sellers were Maplehurst Navarro Wilma 2, VG a Lang Haven Allstar Navarro daughter from four generations of high production cows with three of them EX, two at 93 points and one at VG 88. Wilma had a first lactation of over 9,000 kilograms of milk and sold due in February 2022 to a service to sexed Java-P.

The other high seller was Maplehurst Excalibur Gwennie, a September 2020 heifer sired by UK sire Beechgroves Excalibur. She carried short service. Again, she is from a deep pedigree with her nearest three dams all VG87 points or higher with plus production records. As noted both were purchased by Westcoast.



Other animals selling for more than \$4000 were Maplehurst Indigo Fantasia Bred heifer by Eby Manor Indigo \$4900 Josh Smith buyer.

Maplehurst Drone Trick October 2020 heifer by Hi Guern View Levi Drone \$4800 to Jocelyn Forster.

Maplehurst Legend Wilderness September 2020 daughter of Coulee Crest Grumpy Legend \$4700 Scott Gordon and family, Rockwood, Ontario.

Maplehurst Latimer Liza an October 30, 2020 daughter of

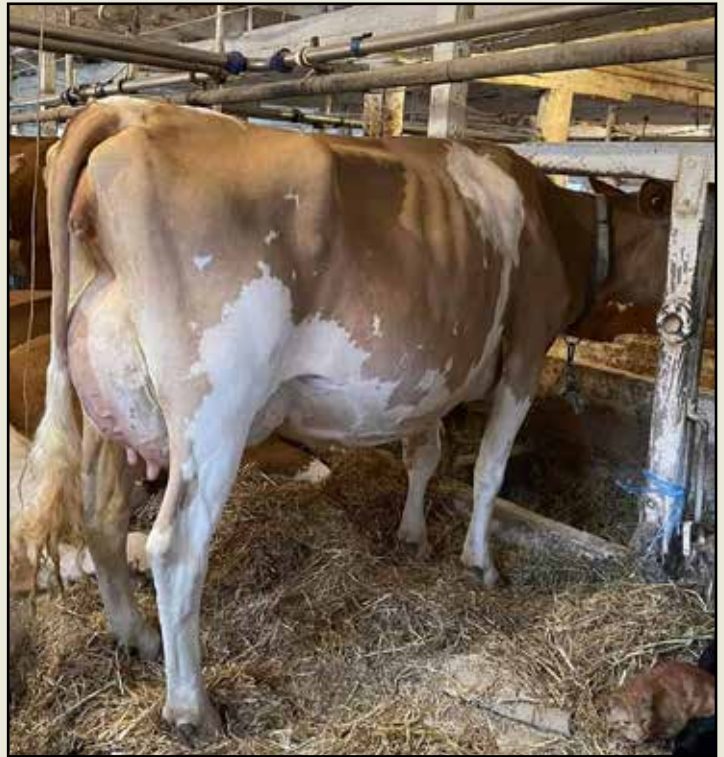
Coulee Crest Fame Latimer \$4500 to Westcoast.

Maplehurst Lightning Kinder a fresh milking yearling by Marodore Les Lightning \$4500 to Maxime Benoit, Quebec.

Maplehurst Jaguar's Lottie a late February 2021 heifer by Springhill Jokes Jaguar \$4400 to D and J Henisee of Pennsylvania and Jack Melia of Ontario.

Maplehurst Pilot Lady a March 2021 Lindrian Grumpy Pilot calf \$4300 Robin K Alden, Ohio.

Maplehurst Alann Laden VG-88 (*pictured below*), second calver by Sniders Blue Spruce Alann \$4200 Valley Gem Farm, Wisconsin.



**Photo: Jack Melia**

Maplehurst Drone Nugget an August 2020 Drone daughter \$4200 Brian and Kristy Dinderman, Illinois.

Maplehurst Pistoll Gwenith VG-87 Marodore Gary Pistoll daughter due with second calf in January \$4200 Kyle Horst, Ontario.

The challenge now is to find Guernseys for those who are keenly interested in Guernsey breeding and production stock and and who were unable to add animals from this great sale. And, find more animals for those who did buy but who have indicated they want more golden cows.

Our hearts are warmed and we are thrilled that Ken and Chris, Rob and Jocelyn Forster all own a few good Guernseys still. We thank the entire family for their readily expressed passion for the breed and all that they and their ancestors contributed to Guernsey fortunes over the decades. Thank you!

And let's build on the terrific momentum this sale created!

# Very Good 2 Year Olds

## (January - November 2021)

GUCANF13262774	MAPLEHURST PISTOLL GWENITH	VG2	87	KEN D FORSTER	ON
GUCANF13262779	MAPLEHURST LATIMER LEGS	VG2	86	KEN D FORSTER	ON
GUCANF13262785	MAPLEHURST LEGEND NIM	VG2	85	KEN D FORSTER	ON
GUCANF13262787	MAPLEHURST LEGEND LOTTO	VG2	85	KEN D FORSTER	ON
GUCANF13262781	MAPLEHURST DOUBLE NELL	VG2	85	KEN D FORSTER	ON
GUCANF12949207	EBY MANOR BEAU KENDRA	VG2	85	EBY MANOR LTD	ON
GUCANF12949214	EBY MANOR BEAU LUCILLE	VG2	85	EBY MANOR LTD	ON
GUCANF13517920	AUCHINLECK KEZIAH LAKODA	VG2	85	AUCHINLECK FARMS LTD	PE
GUCANF13159219	GREYSTONE NOVAK FELICITY	VG2	85	FULLER VIEW FARM	NS
GUCANF13262783	MAPLEHURST DOUBLE LITA	VG2	85	KEN D FORSTER	ON
GUCANF13262773	MAPLEHURST LIGHTNING SASSY	VG2	85	KEN D FORSTER	ON
GUCANF13262788	MAPLEHURST BLUE SPRUCE RITUAL	VG2	85	KEN D FORSTER	ON

# Excellents

## (January - November 2021)

GUCANF12292424	MAPLEHURST LEGEND WINTER	EX	93	KEN D FORSTER	ON	
GUCANF11356202	MAPLEHURST LYNNDILLS ROSA	EX	92	KEN D FORSTER	ON	
GUCANF12292442	MAPLEHURST LEGENDS LEGACY	EX	92	KEN D FORSTER	ON	
GUCANF12292488	LINDRIAN LEVI PEPPY	EX	92	KEN D FORSTER	ON	
GUCANF12292464	MAPLEHURST PILOT TREAT	EX	92	KEN D FORSTER	ON	
GUCANF11356238	MAPLEHURST MENTOR FELICIA	EX	91	KEN D FORSTER	ON	
GUCANF11632483	LINDRIAN LEGEND PATI	EX	91	JOHN & LINDA TAMIS	BC	
GUCANF12292432	MAPLEHURST GEO LADDIE	EX	91	2E	KEN D FORSTER	ON
GUCANF12292440	MAPLEHURST PILOT KAYLEE	EX	91	2E	KEN D FORSTER	ON
GUCANF12292468	MAPLEHURST PISTOLL RAIN	EX	91	1E	KEN D FORSTER	ON
GUCANF12292481	MAPLEHURST NAVARRO BRIDGET	EX	91	1E	KEN D FORSTER	ON
GUCANF12292476	MAPLEHURST PISTOLL WILLOW	EX	91	1E	KEN D FORSTER	ON
GUCANF11902310	COMFORT FARMS DIAMOND	EX	90	2E	LEWIS LAND AND STOCK	ON
GUCANF11356259	MAPLEHURST LEGEND KINDNESS	EX	90	2E	KEN D FORSTER	ON
GUCANF12292440	MAPLEHURST PILOT KAYLEE	EX	90	2E	KEN D FORSTER	ON
GUCANF12292436	MAPLEHURST TURLEY GREAT	EX	90	1E	KEN D FORSTER	ON
GUUSAF97002319	ROZELYN DANIEL MARTHA	EX	90	1E	PROMISE VALLEY FARM	BC
GUCANF12292469	MAPLEHURST PILOT SAFFIRE	EX	90	1E	KEN D FORSTER	ON
GUCANF12236404	LINDRIAN POLLY LEVI	EX	90	1E	JOHN & LINDA TAMIS	BC
GUCANF11356227	MAPLEHURST GARY'S LIBBY	EX	90	1E	KEN D FORSTER	ON
GUCANF12063004	EBY MANOR LEVI WINDY	EX	90	1E	EBY MANOR LTD	ON
GUCANF12292457	MAPLEHURST JAGUAR LUCY	EX	90	1E	KEN D FORSTER	ON
GUCANF11902324	COMFORT FARMS LUMEN	EX	90	1E	COMFORT FARMS LTD	ON
GUCANF12292435	MAPLEHURST GOTCHA RITA	EX	90	1E	KEN D FORSTER	ON
GUCANF11902305	COMFORT FARMS AUDREY 2	EX	90	1E	COMFORT FARMS LTD	ON
GUCANF12292439	MAPLEHURST GEO GRETCHEN	EX	90	1E	KEN D FORSTER	ON



**Production Records (January - November 2021) Ranked by Composite Milk, Fat, Protein**

14	GUUSAF97004824	COULEE CREST JUDGMENT KIRA	PB	2	11	7000	364	5.2	259	3.7	221	226	229	676	FERME IMPERIALE SENC.	QC
15	GUCANF13072229	DON HAVEN LATIMER ABBIE	PB	2	6	7233	345	4.8	251	3.5	226	214	220	660	SCOTT GORDON	ON
Jr. 3 Yr-Old																
1	GUCANF12677188	LINDRIAN POLLA LEVIET	PB	VG	85	3	0	10950	498	4.5	352	323	326	1009	JOHN & LINDA TAMIS	BC
2	GU840F3135939973	MARODORE HP NOVAK PORTIA-ETV	PB	VG	85	3	3	11514	470	4.1	367	273	298	905	FULLER VIEW FARM, J. FULLER,	NS
3	GUCANF12062996	EBY MANOR JETHRO EMILY	PB	GP	83	3	5	10271	473	4.6	345	287	297	899	EBY MANOR LTD	ON
4	GUCANF12063011	EBY MANOR ERNIE JANA	PB	VG	87	3	2	10022	500	5	326	310	283	896	EBY MANOR LTD	ON
5	GUCANF12615109	DON HAVEN LATIMER VESPA	PB	VG	87	3	0	8842	426	4.8	337	277	312	880	SCOTT GORDON	ON
6	GUCANF12062989	EBY MANOR JAGUAR INSPIRE	PB	VG	85	3	4	9340	557	6	333	273	273	872	EBY MANOR LTD	ON
7	GU840F3134140262	JENS GOLD NOVAK VIDEO	75	GP	81	3	1	11083	422	3.8	356	248	294	868	FERME IMPERIALE SENC.	QC
8	GUUSAF97005236	LAND OF LIVING A DEWDROP ET ET	PB		3	1		8508	480	5.6	298	295	261	821	EBY MANOR LTD	ON
9	GUUSAF97003205	OAK KNOB PHONZE FERN	PB	VG	85	3	2	9478	460	4.8	334	267	274	818	FERME IMPERIALE SENC.	QC
10	GUCANF12063014	EBY MANOR PISTOLL CAILEY	PB	GP	82	3	1	8506	431	5.1	296	264	260	789	EBY MANOR LTD	ON
11	GUCANF12063002	EBY MANOR NAVAJO ISLA	PB	VG	85	3	1	9113	442	4.8	293	272	246	783	EBY MANOR LTD	ON
12	GUCANF12062993	EBY MANOR JETHRO WANITA	PB	GP	83	3	5	9537	380	4	299	228	256	773	EBY MANOR LTD	ON
13	GUCANF12062988	EBY MANOR JAGUAR PEARL	PB	VG	85	3	1	8117	444	5.5	307	244	258	765	EBY MANOR LTD	ON
14	GUUSAF97004277	COULEE CREST NAVAJO ETHEL-TW	PB		3	0		8071	362	4.5	283	266	262	763	FERME IMPERIALE SENC.	QC
15	GUCANF12677196	LINDRIAN PAYA LATIMER	PB	VG	86	3	3	9129	433	4.7	306	249	249	763	JOHN & LINDA TAMIS	BC
Sr. 3 Yr-Old																
1	GUCANF12062990	EBY MANOR JAGUAR FAITH	PB	VG	88	3	9	11998	556	4.6	398	341	349	1065	EBY MANOR LTD	ON
2	GUCANF12792985	BEAVERWOOD ERNIE'S ELYSE	87		3	7		9182	500	5.5	331	286	267	816	BEAVERWOOD FARMS INC.	NB
3	GUCANF12062986	EBY MANOR NAVAJO INSPIRATION	PB	GP	82	3	10	9079	418	4.6	305	282	268	805	EBY MANOR LTD	ON
4	GUCANF12292476	MAPLEHURST PISTOLL WILLOW	PB	EX	91	3	7	8852	380	4.3	315	277	233	786		
5	GUCANF12251483	BEAVERWOOD CIMERON'S DIANNE	PB		3	6		8652	393	4.5	319	250	259	735	BEAVERWOOD FARMS INC.	NB
6	GUCANF12792959	BEAVERWOOD CASPIAN'S DOROTHY 2	PB		3	6		7584	377	5	270	240	241	715	BEAVERWOOD FARMS INC.	NB
7	GUCANF12251489	BEAVERWOOD GOTCHAS DERIKA	PB		3	6		7784	368	4.7	285	234	242	695	BEAVERWOOD FARMS INC.	NB
8	GUCANF12251480	BEAVERWOOD CIMERON'S DORIS	PB		3	6		8342	372	4.5	297	213	240	692	BEAVERWOOD FARMS INC.	NB
9	GUCANF12292473	MAPLEHURST PISTOLL TRIP	PB	VG	88	3	7	7389	291	3.9	249	180	220	633	KEN D FORSTER	ON
10	GUCANF12251484	BEAVERWOOD CIMERON'S DEVON	PB		3	6		6591	345	5.2	260	201	213	607	BEAVERWOOD FARMS INC.	NB
11	GUCANF12251472	BEAVERWOOD PILOT'S DESIREE	PB		3	11		7241	330	4.6	276	185	217	605	BEAVERWOOD FARMS INC.	NB
12	GUCANF12792965	BEAVERWOOD LEVI'S ELSPEITH	PB		3	9		6851	366	5.3	262	203	206	601	BEAVERWOOD FARMS INC.	NB
13	GUCANF12792963	BEAVERWOOD ABBOTT'S ELOISE	PB		3	6		5650	327	5.8	244	178	202	596	BEAVERWOOD FARMS INC.	NB
14	GUCANF11902339	COMFORT FARMS EDWINA	PB	G	78	3	6	7168	299	4.2	228	178	193	587	COMFORT FARMS LTD	ON
15	GUCANF12792974	BEAVERWOOD ABBOTT'S ERIN	PB		3	7		6260	320	5.1	249	177	198	556	BEAVERWOOD FARMS INC.	NB
4 Yr Old																
1	GUCANF12062980	EBY MANOR LOGO SYLVIA	PB	GP	82	4	1	13020	578	4.4	419	383	346	1065	EBY MANOR LTD	ON
2	GUCANF12062970	EBY MANOR CASPIAN FAIRE	PB	VG	85	4	8	10665	541	5.1	373	318	311	945	EBY MANOR LTD	ON
3	GUCANF12236406	LINDRIAN POLLIE LEVIET	PB	VG	87	4	0	11070	553	5	399	307	317	936	JOHN & LINDA TAMIS	BC
4	GUCANF12292454	MAPLEHURST JAGUAR NATCHO	PB	EX	90	4	3	10417	421	4	348	304	285	832	KEN D FORSTER	ON
5	GUUSAF78007072	OAK KNOB COTTER ZAP	PB	VG	86	4	5	10583	498	4.7	338	268	256	810	FERME IMPERIALE SENC.	QC
6	GUCANF12292433	MAPLEHURST GARY LISA	PB	VG	86	4	11	9738	398	4.1	312	290	260	784	KEN D FORSTER	ON
7	GUCANF12792961	BEAVERWOOD RUSSELL'S ELIZABETH	PB		4	0		9496	404	4.2	352	263	275	761	BEAVERWOOD FARMS INC.	NB
8	GUCANF12292456	MAPLEHURST TOBY PANDORA	PB	VG	87	4	6	9086	435	4.8	326	251	253	740	KEN D FORSTER	ON
9	GUCANF12292467	MAPLEHURST JAGUAR PEANUTS	PB	VG	88	4	0	7858	406	5.2	294	241	243	737	KEN D FORSTER	ON
10	GUCANF12062981	EBY MANOR NAVAJO DESTINY	87	GP	80	4	7	9760	445	4.6	300	262	226	727	EBY MANOR LTD	ON



**Production Records (January - November 2021) Ranked by Composite Milk, Fat, Protein**

11	GUCANF12062983	EBY MANOR LEO WILLOW	PB	VG	87	4	8	8746	419	4.8	304	3.5	247	235	241	723	EBY MANOR LTD	ON	
12	GUCANF12292455	MAPLEHURST PILOT SEABISC	PB	EX	90	4	3	8625	381	4.4	303	3.5	252	220	248	720	KEN D FORSTER	ON	
13	GUCANF11356251	MAPLEHURST DAWSON NORA	PB	VG	87	4	11	8338	378	4.5	282	3.4	248	222	235	705	MORRIS & PENNY BARTLETT	ON	
14	GUCANF11356251	MAPLEHURST DAWSON NORA	PB	VG	87	4	11	8338	378	4.5	282	3.4	248	222	235	705	MORRIS & PENNY BARTLETT	ON	
15	GUCANF12292464	MAPLEHURST PILOT TREAT	PB	EX	92	4	2	8180	401	4.9	285	3.5	229	222	224	675	KEN D FORSTER	ON	
5 Yr Old																			
1	GUCANF11356253	MAPLEHURST LEGEND CUIE	PB	EX	90	5	9	9431	439	4.7	354	3.8	276	255	290	821	KEN D FORSTER	ON	
2	GUCANF12251438	BEAVERWOOD SHERMAN'S CLARA	PB	PB		5	10	9581	518	5.4	344	3.6	249	273	251	773	BEAVERWOOD FARMS INC.	NB	
3	GUCANF11632483	LINDRIAN LEGEND PATI	PB	EX	91	5	3	9069	396	4.4	336	3.7	256	222	267	745	JOHN & LINDA TAMIS	BC	
4	GUCANF12292442	MAPLEHURST LEGENDS LEGACY	PB	EX	92	5	0	8926	424	4.8	319	3.6	242	228	244	714	KEN D FORSTER	ON	
5	GUCANF12062952	EBY MANOR SHERBERT INDIA	PB	GP	80	5	7	7914	479	6	320	4	207	252	235	694	EBY MANOR LTD	ON	
6	GUCANF12251435	BEAVERWOOD SHERMAN'S MAKAYLA	PB	PB		5	4	9039	373	4.1	296	3.3	250	206	229	685	BEAVERWOOD FARMS INC.	NB	
7	GUCANF11902310	COMFORT FARMS DIAMOND	PB	EX	90	5	0	8302	400	4.8	275	3.3	235	222	218	675	LEWIS LAND AND STOCK	ON	
8	GUCANF11356249	MAPLEHURST ARCHIE BINGO	PB	EX	90	5	10	7518	373	5	265	3.5	220	217	217	654	KEN D FORSTER	ON	
9	GUCANF12088224	BEAVERWOOD NAVAJO'S ALEXIS	87	GP		5	11	8715	277	3.2	277	3.2	253	159	225	637	BEAVERWOOD FARMS INC.	NB	
10	GU840F3014321879	JENS GOLD GRUMPY YEVA	PB	GP	83	5	0	7267	345	4.8	269	3.7	212	201	220	633	FERME IMPERIALE SENC.	QC	
11	GUCANF11755692	BEAVERWOOD GRUMPY'S BERNADETTE	PB	PB		5	10	7754	390	5	282	3.6	202	205	206	613	BEAVERWOOD FARMS INC.	NB	
12	GUCANF11356256	MAPLEHURST GEO ROSEBUD	PB	EX	90	5	7	7390	317	4.3	269	3.6	207	178	212	597	KEN D FORSTER	ON	
13	GUCANF11755700	BEAVERWOOD LEGEND'S NARUA	PB	PB		5	7	8043	324	4	284	3.5	210	171	209	590	BEAVERWOOD FARMS INC.	NB	
14	GUUSAF78004856	MAR MILK JOSEPHINE JAMESON GEO	PB	VG	85	5	0	6740	342	5.1	239	3.5	188	190	188	566	WANAMAKER BROTHERS	NB	
15	GUCANF12251436	BEAVERWOOD NIINJA'S LAURYN	PB	PB		5	6	6340	292	4.6	242	3.8	186	171	200	557	BEAVERWOOD FARMS INC.	NB	
Mature Cow																			
1	GUCANF11553843	EBY MANOR VANCE FERN	PB	VG	87	8	4	10647	455	4.3	321	3	309	268	261	838	EBY MANOR LTD	ON	
2	GUCANF11464475	GREENBROOK CANDY BLUE SPRUCE	PB	VG	85	6	10	10763	458	4.3	377	3.5	293	252	288	833	EBY MANOR LTD	ON	
3	GUCANF11553869	EBY MANOR GEO SAPPHIRE	PB	VG	85	7	0	11042	468	4.2	354	3.2	292	252	262	806	EBY MANOR LTD	ON	
4	GUCANF11120539	EBY MANOR JUDGMENT FRAN	PB	VG	87	8	10	9393	442	4.7	328	3.5	274	263	269	806	EBY MANOR LTD	ON	
5	GUCANF11983689	CALLUMLEA TURLEY DAPHINE	PB	GP	82	6	2	8757	466	5.3	323	3.7	253	268	263	784	KENNETH MCNABB	ON	
6	GUCANF11356212	MAPLEHURST PHOENIX FEATHERS	PB	EX	90	6	11	10410	469	4.5	329	3.2	269	246	238	753	KEN D FORSTER	ON	
7	GUCANF11356212	MAPLEHURST PHOENIX FEATHERS	PB	EX	90	6	11	10410	469	4.5	329	3.2	269	246	238	753	KEN D FORSTER	ON	
8	GUCANF11553870	EBY MANOR WARD BELLA	87	VG	86	6	10	10165	357	3.5	316	3.1	261	187	227	675	EBY MANOR LTD	ON	
9	GUCANF11553898	EBY MANOR J ELLIE	PB	VG	85	6	4	8208	355	4.3	285	3.5	237	204	232	673	EBY MANOR LTD	ON	
10	GUCANF11755689	BEAVERWOOD LEGEND'S DANDY	PB	GP	81	6	3	8529	368	4.3	275	3.2	238	207	215	660	MICHAEL B SANDESON	NS	
11	GUCANF11255577	BEAVERWOOD NACHO'S ISABELLA	PB	PB		8	6	8035	323	4	278	3.5	234	191	228	653	BEAVERWOOD FARMS INC.	NB	
12	GUCANF11632414	LINDRIAN PAY STAR	PB	GP	83	7	3	8113	330	4.1	265	3.3	234	192	215	641	JOHN & LINDA TAMIS	BC	
13	GUCANF11356240	MAPLEHURST LES LOGIC	PB	VG	88	6	2	7499	372	5	261	3.5	215	214	210	639	KEN D FORSTER	ON	
14	GUCANF11553891	EBY MANOR JACKSON FEBRUARY	PB	VG	87	6	9	8532	364	4.3	288	3.4	226	194	215	635	EBY MANOR LTD	ON	
15	GUCANF12088227	BEAVERWOOD DAWSON'S RUBY	PB	PB		6	0	7988	328	4.1	259	3.2	222	180	202	604	BEAVERWOOD FARMS INC.	NB	
Aged Cow																			
1	GUCANF7886213	MATT-AMIA TROMBONE BONNIE-SUE	PB	EX	90	14	6	9890	423	4.3	334	3.4	298	275	283	856	CARDINAL CREEK HOLSTEINS	ON	
2	GUCANF9984888	EBY LAWN NEON FLIPPER	PB	VG	88	10	2	10303	451	4.4	332	3.2	273	249	248	770	EBY MANOR LTD	ON	
3	GUCANF10913652	EBY MANOR AARON WHEY ET	PB	VG	87	10	4	8307	371	4.5	269	3.2	247	229	224	700	EBY MANOR LTD	ON	
4	GUCANF10837638	CEDAR ROCK BOLERO ZELLA	PB	G	76	10	8	5454	274	5	204	3.7	161	170	170	501	WANAMAKER BROTHERS	NB	
5	GUCANF9668153	CEDAR ROCK R.D. BABE	PB	GP	83	11	2	5031	241	4.8	171	3.4	138	140	132	410	WANAMAKER BROTHERS	NB	



## Coloured Breed Highlights - December 2021 -

### “Novak” Attracts Attention Among Guernsey Sires

For two consecutive rounds, the Guernsey breed welcomes a sire that receives official proven status in Canada and arrives in #3 LPI position. This December, this achievement goes to Lang Haven Grumpy Novak (#3 LPI, Grumpy x Natural), who also becomes the new breed leader for Protein and occupies the #4 position for both Milk and Fat. The breed leading duo remain solid as Dairyman Double Dawson maintains #1 LPI (#3 Fat) and his sire, Pine Ridge Double L, follows at #2 LPI (#2 Fat). Two sire experience some LPI gain, enough to move them into the Top 5 list, as Paokie Lil Ernie grabs #4 LPI (from #8, Jetstream x American Pie) and Edgewater Meadows Yogibear follows in #5 LPI position (from #7, Tiller x Goliath, tied #3 Conformation).

As with the top sire, the top two LPI cows remain unchanged this round. Lindrian Pamper Bear ET 200 stays firm at #1 LPI and the same is true for Eby Manor D L Indy at #2 LPI (#2 Fat). An elite dam-daughter team climb the LPI list as Guernsey View Urma's Expense takes #3 LPI (#4 Fat) and is immediately followed by her daughter, Guernsey View Jaguar Erin at #4 LPI (#8 Fat). Lindrian Pollie Levi also moves up the LPI list as she now grabs #5 position from #9 LPI last round. The highest newly indexed cow this round is PR Dairyman Beau 4180 Dashca (Beau x Phonze) at #63 LPI.

### Taureaux Guernsey Bulls

Newly Proven Bulls by LPI			Top 5 LPI Bulls			Bulls with Biggest LPI Change			Sires of Top 25 LPI Bulls (Average LPI)		
Nouvellement Éprouvés selon IPV			5 Meilleurs selon l'IPV			Taureaux avec changement d'IPV important			Pères des 25 Meilleurs (Moyenne d'IPV)		
3	NOVAK	GRUMPY 1205	1 DOUBLE DAWSON	-	1341	GRUMPY	+69	991	GRUMPY	12%	1045
			2 DOUBLE L	+	1261				ENHANCER	12%	946
			3 NOVAK	N	1205				TILLER	8%	1012
			4 ERNIE	+	1122						
			5 YOGIBEAR	+	1107						
Milk / Lait (kg)			Fat / Gras (kg)			Protein / Protéine (kg)			Conformation		
1	TRUMPET	+ 1277	1 BINGO	0	35	1 NOVAK	+	35	1 LEVI	0	12
2	LEWIS	+ 1098	2 DOUBLE L	+	31	2 LUXURY	0	27	2 PRADA	0	10
3	GARY	- 1096	3 DOUBLE DAWSON	-	30	3 LEWIS	+	26	3 YOGIBEAR	0	9
4	NOVAK	+ 1093	4 NOVAK	+	28	4 TRUMPET	+	25	3 PHOENIX	0	9
5	REWARD	+ 1074	5 AARON	+	25	4 GARY	0	25	3 BILLY JO	0	9
			5 KRUNCH	0	25						

### Vaches Guernsey Cows

Top 5 LPI Cows			Sires of Top 400 LPI Cows			Dams of Top 400 LPI Cows			New Top LPI Cows		
5 Meilleures Vaches selon l'IPV			Pères des 400 Meilleures selon l'IPV			Mères des 400 Meilleures selon l'IPV			Meilleures Nouvelles Vaches selon l'IPV		
1	LINDRIAN PAMPER BEAR ET 200	+ 1633	DOUBLE L	9.25%	1121	LINDRIAN PAMPER BEAR ET 200	6	63 PR-DAIRYMAN BEAU 4180 DASHCA	1206		
2	EBY MANOR D L INDY	- 1569	YOGIBEAR	5.75%	1123	LINDRIAN GARRETT PIPPY 465	5	65 EBY MANOR NOVAK TAMAR	1200		
3	GUERNSEY VIEW URMA'S EXPENSE	+ 1511	LEGEND	4.50%	1016	LINDRIAN PIZZAZ	4	73 DAIRYMAN BEAU 4227 ALLOY	1187		
4	GUERNSEY VIEW JAGUAR ERIN	+ 1497	AARON	4.00%	1091						
5	LINDRIAN POLLIE LEVI	+ 1461	BLUE SPRUCE	3.50%	1099						
Milk / Lait (kg)			Fat / Gras (kg)			Protein / Protéine (kg)			Conformation		
1	LINDRIAN DUNGOEN NEWTON	- 2038	1 LINDRIAN AARON PENNY TWO	+	61	1 JENS GOLD PROFIT EUNICE	+	61	1 BROADVIEW ZOOBY	0	15
2	JENS GOLD PROFIT EUNICE	+ 1901	2 EBY MANOR D L INDY	0	59	2 LINDRIAN DUNGOEN NEWTON	0	48	2 EBY MANOR TILLER WESLIE	0	14
3	LINDRIAN POLITE	+ 1668	3 EBY MANOR JULIUS JOCELYN	0	56	3 LINDRIAN POLITE	+	45	2 SUN SET MAGIC NATALIE	0	14
4	EBY MANOR LOGO SYLVIA	- 1588	4 GUERNSEY VIEW URMA'S EXPENSE	+	55	4 GLEN HAVEN LEWIS LANA	+	42	2 SUN SET MAGICMAN NATALIE-ANN	0	14
5	LINDRIAN PALANE 231	+ 1571	5 MAPLEHURST AARONS BIANCA	+	54	5 EBY MANOR GARY SASHA	-	40	2 COMFORT FARMS LYNSEY	0	14

TOP GUERNSEY YOUNG BULLS BY GENOMIC PARENT AVERAGE FOR LPI (GPA LPI) - DECEMBER 2021 GENETIC EVALUATIONS																			
MEILLEURS JEUNES TAUREAUX GUERNSEY SELON LA MOYENNE DES PARENTS GÉNOMIQUE POUR L'IPV (IPV MPG) - ÉVALUATIONS GÉNÉTIQUES DÉCEMBRE 2021																			
<i>(Based on young bulls at least 11 months old with semen available in Canada / Basée sur les jeunes taureaux âgés d'au moins 11 mois dont la semence est disponible au Canada)</i>																			
RANK	GPA LPI	REGISTRATION	NAME	NAAB MARKETING	NAAB CODE	AGE	MILK	FAT	PROT	%F	%P	SCS	CONF	MS	F&L	DS	RP	NAME of SIRE	NAME of DAM
RANG	IPV MPG	ENREGISTREMENT	NOM	CODE	CODE NAAB	ÂGE	LAIT	GRAS	PROT	%F	%P	CSS	CONF	SM	P&M	PL	Cr	NOM du PÈRE	NOM de la MÈRE
1	1251	840 3214098840	COULEE CREST TSUNAMI-ETV	200	0200GU00124	20	491	27	19	0.07	0.03	104	7	6	4	1	2	COULEE CREST TOBY KEITH	COULEE CREST PILOT LAVA
2	1127	840 3200731885	DAIRYMAN TOBY PHARMER	7	0006GU00110	39	120	19	13	0.18	0.12	103	4	3	4	0	2	RIPLEY FARMS PIE C TOBY	DAIRYMAN CORDELL PHANNY
3	1122	840 3214098913	COULEE CREST CARVER-ET	200	0200GU00126	12	189	13	6	0.06	0.00	101	7	8	4	1	-1	MARODORE RANDALLS VENGEANCE	COULEE CREST NET WORTH CARA
4	1093	840 3208361479	COULEE CREST RICHARD CHECKMATE	7	0006GU00116	22	334	6	12	-0.13	0.01	100	4	6	2	0	-3	DAIRYMAN LEGEND RICHARD	COULEE CREST LOGO CHARLOTTE
5	1075	USA 97009643	MEADOW GLOW L KANDYMAN	7	0006GU00117	21	625	22	14	-0.08	-0.11	100	5	2	4	3	5	GOLDEN I LONDON	MEADOW GLOW JAGUAR KANDYAPPE
6	1066	840 3146571505	RIPLEY FARMS NETWORK C THEO	7	0006GU00112	43	-264	6	-3	0.24	0.07	104	7	7	4	0	-1	LANG HAVEN JUDGMENT NET WORTH	RIPLEY FARMS DL C TILLIE
7	1060	840 3200731886	DAIRYMAN CHARMING CRAIG	7	0006GU00111	39	-336	3	-7	0.26	0.07	107	4	9	-1	-2	-1	WALNUT RIDGE PRINCE CHARMING	DAIRYMAN LAREDO 2303 CHLOE
8	1058	CAN 12949167	EBY MANOR INDIGO	200	0200GU00122	50	362	32	10	0.21	-0.05	104	2	4	2	1	-2	MARODORE T LES LIGHTNING	EBY MANOR D L INDY
9	1057	840 3128910114	BLA ARL NOVAK POPEYE	7	0006GU00103	58	474	12	15	-0.11	-0.03	101	5	4	4	3	4	LANG HAVEN GRUMPY NOVAK	BLA ARL AARONS POPCORN
10	1043	840 3151591406	SPRINGHILL JC PENNEY	7	0006GU00114	36	-155	-4	-3	0.06	0.05	101	11	12	7	2	5	COULEE CREST NOVAK LAMBEAU	SPRINGHILL MENTOR JAZZY
11	1033	840 3142332608	PINE-TREE JORDY BUILT	7	0006GU00108	45	344	20	14	0.05	0.03	103	0	-1	0	1	0	DAIRYMAN DAWSON JORDY	SANDY KNOLL GRUMPY BIBI
12	1014	840 3009973861	DAIRYMAN NOVAK BROGDON	513	0551GU00901	63	878	8	20	-0.42	-0.15	104	3	2	2	1	2	LANG HAVEN GRUMPY NOVAK	ROLLING PRAIRIE BELLA BLUE
13	1010	840 3132117311	PINE-TREE LEVI BEAVER	7	0006GU00104	58	-51	-3	-2	-0.03	-0.01	103	8	7	5	2	4	MARODORE AARONS LEVI	PAOKIE LIL ERNA BEA
14	1005	840 3009973862	DAIRYMAN ORBIT PHANTASTIC	7	0006GU00106	54	105	7	8	0.03	0.05	101	5	3	-1	2	2	BREEZY POINT GRUMPY ORBIT	DAIRYMAN CORDELL PHANNY
15	1003	USA 97006805	MARODORE RANDALLS VENGEANCE	7	0006GU00113	40	287	13	8	0.00	-0.02	103	6	5	0	1	2	DAIRYMAN COPPER RANDALL	MARODORE BOOMERS VALIUM



# Benchmarks for Genetic Herd Inventory Reports

Provincial and National Averages Used as Benchmarks for Genetic Herd Inventory Reports

Moyennes provinciales et nationales à titre de point de repère pour les rapports d'inventaire génétique du troupeau

Breed: Guernsey

- December 2021 / Décembre 2021 -

Race: Guernsey

All Active Cows / Toutes les Vaches Actives														
Province	No. Cows	% Inbreeding	Milk	Fat	Protein	% Fat	% Protein	SCS	CONF	Mammary System	Feet & Legs	Dairy Strength	Rump	LPI
	No. Vaches	% Consanguinité	Lait	Gras	Protéine	% Gras	% Protéine	CCS		Système mammaire	Pieds & membres	Puissance laitière	Croupe	IPV
PEI / IPE	1	6.69	-70	2.0	2.0	0.07	0.06	103.0	0.0	0.0	3.0	3.0	-2.0	859
NS / NÉ	8	9.35	-50	1.5	0.9	0.06	0.04	101.4	3.0	3.3	2.4	0.9	0.6	886
NB	22	7.42	-209	0.3	-4.0	0.14	0.04	103.5	1.1	1.5	0.7	-1.4	-0.5	815
QC	36	3.11	959	22.3	24.6	-0.22	-0.10	104.3	2.0	1.8	0.4	0.3	0.5	1135
ON	180	7.46	54	2.7	2.2	0.02	0.01	101.9	2.6	2.4	1.6	0.5	0.5	870
BC / CB	17	6.25	180	6.0	4.9	-0.01	-0.01	103.8	4.6	4.8	1.9	1.4	0.4	1011
<b>CANADA</b>	<b>264</b>	<b>6.84</b>	<b>160</b>	<b>5.3</b>	<b>4.9</b>	<b>-0.01</b>	<b>0.00</b>	<b>102.4</b>	<b>2.5</b>	<b>2.4</b>	<b>1.4</b>	<b>0.4</b>	<b>0.4</b>	<b>911</b>

Active Cows With Publishable Production Indexes / Vaches Actives avec Indices de Production Publiables														
Province	No. Cows	% Inbreeding	Milk	Fat	Protein	% Fat	% Protein	SCS	CONF	Mammary System	Feet & Legs	Dairy Strength	Rump	LPI
	No. Vaches	% Consanguinité	Lait	Gras	Protéine	% Gras	% Protéine	CCS		Système mammaire	Pieds & membres	Puissance laitière	Croupe	IPV
PEI / IPE	0	---	---	---	---	---	---	---	---	---	---	---	---	---
NS / NÉ	6	8.22	2	2.7	1.5	0.05	0.02	101.2	3.0	3.5	2.2	0.8	0.7	893
NB	5	6.82	-326	-1.0	-6.6	0.19	0.06	99.0	-0.2	-0.2	2.0	-1.4	0.6	712
QC	5	8.47	71	3.2	5.6	0.02	0.05	102.0	4.2	4.0	-0.6	2.4	0.6	940
ON	168	7.57	50	2.5	2.0	0.02	0.01	101.8	2.5	2.4	1.6	0.5	0.5	868
BC / CB	17	6.25	180	6.0	4.9	-0.01	-0.01	103.8	4.6	4.8	1.9	1.4	0.4	1011
<b>CANADA</b>	<b>201</b>	<b>7.48</b>	<b>51</b>	<b>2.8</b>	<b>2.1</b>	<b>0.02</b>	<b>0.01</b>	<b>101.9</b>	<b>2.7</b>	<b>2.6</b>	<b>1.6</b>	<b>0.6</b>	<b>0.5</b>	<b>879</b>

Active Cows With Unpublishable Production Indexes / Vaches Actives avec Indices de Production Non-Publiables														
Province	No. Cows	% Inbreeding	Milk	Fat	Protein	% Fat	% Protein	SCS	CONF	Mammary System	Feet & Legs	Dairy Strength	Rump	LPI
	No. Vaches	% Consanguinité	Lait	Gras	Protéine	% Gras	% Protéine	CCS		Système mammaire	Pieds & membres	Puissance laitière	Croupe	IPV
PEI / IPE	1	6.69	-70	2.0	2.0	0.07	0.06	103.0	0.0	0.0	3.0	3.0	-2.0	859
NS / NÉ	2	12.76	-203	-2.0	-1.0	0.1	0.08	102.0	3.0	2.5	3.0	1.0	0.5	866
NB	17	7.59	-175	0.6	-3.2	0.12	0.04	104.8	1.5	2.1	0.3	-1.4	-0.8	846
QC	31	2.24	1102	25.4	27.7	-0.26	-0.12	104.7	1.6	1.4	0.5	-0.1	0.5	1166
ON	12	6.01	107	4.3	4.4	-0.01	0.01	102.6	3.1	2.4	1.2	0.8	1.8	903
BC / CB	0	---	---	---	---	---	---	---	---	---	---	---	---	---
<b>CANADA</b>	<b>63</b>	<b>4.81</b>	<b>508</b>	<b>13.5</b>	<b>13.6</b>	<b>-0.09</b>	<b>-0.04</b>	<b>104.2</b>	<b>1.9</b>	<b>1.8</b>	<b>0.7</b>	<b>-0.2</b>	<b>0.4</b>	<b>1015</b>

## Top 5 Guernsey Herds by LPI

LACTANET CANADA																
December / Décembre 2021																
TOP 5 GUERNSEY HERDS BY LPI / 5 MEILLEURS TROUPEAUX GUERNSEY SELON L'IPV																
(minimum 10 active cows with official LPI) / (minimum de 10 vaches actives avec un IPV officiel)																
Rank Rang	LPI IPV	No. Cows No. Vaches	Name of Farm / Owner Nom de la Ferme / Propriétaire	City Ville	Province	Milk Lait	Fat Gras	Protein Protéine	Fat % % Gras	Prot % % Prot	SCS CCS	CONF	MS SM	F&L P&M	DS PL	RP Cr
1	1011	17	LINDRIAN FARMS	SURREY	BC	180	6	5	-0.01	-0.01	103.8	4.6	4.8	1.9	1.4	0.4
2	981	30	FERME IMPERIALE	NOYAN	QC	202	6	7	-0.01	0.03	102.2	2.8	3.2	2.0	0.7	0.3
3	902	61	EBY MANOR FARM LTD.	WATERLOO	ON	137	5	4	0.01	0.00	100.3	2.9	2.8	2.1	0.5	0.9
4	868	43	COMFORT FARMS	ST ANNS	ON	-10	0	1	0.02	0.02	104.7	2.3	2.0	2.0	1.0	-0.6
5	831	52	MAPLEHURST FARMS	LYNDEN	ON	-11	1	1	0.04	0.02	101.1	1.8	2.1	0.9	-0.2	0.3





# Administrator's Message

Dear Guernsey members,

It is with mixed emotions I write this my final newsletter message to our Guernsey members. I have truly enjoyed my 11-year tenure with the Association, its board, and members. With the retirement of a staff member at the end of December, EastGen is making organizational changes. The re-organization will involve me taking on new responsibilities as the Executive Assistant to the General Manager and the EastGen Board of Directors. Unfortunately, with this change EastGen will not be providing services to the Association in the future. I am very excited for this new opportunity and for the new path ahead. The Guernsey breed has an amazing board of directors and fieldman who will guide you through this transition. I have no doubt there are great things ahead for the breed and I wish the Association every success.

As Russell has mentioned in his report, the iconic Maplehurst Guernsey herd sold with an outstanding sale average. The Forster's have been huge supporters of the breed and the Association. I would like to congratulate the whole Forster family and wish Chris & Ken well on their retirement. A retirement well earned! For the lucky individuals who purchased a Maplehurst animal, you have chosen wisely. For some, this will be your first Guernsey animal and we welcome you to the Association.

This past month, our thoughts and prayers have been with the farmers and people affected by the floods in British Columbia. Such a huge tragedy and loss. Having said that, the past 20 months have been very trying for everyone but as things begin to open up, the board will continue to make decisions in the best interest of

the membership. The Annual General Meeting will be a virtual meeting again this year on Friday, March 18, 2022, at 10:30 a.m. More details will follow as they become available, and I encourage you to participate. The virtual avenue gives the opportunity for more participation from members across all provinces and for those where the distance does not allow for an in-person event.

On another positive note, membership, transfers, and registration are all up from the same time period as last year. At a recent board of directors meeting, the board accepted the proposed goals for the Guernsey breed. The goals are printed in the newsletter, and we encourage members to review and put emphasis on as many of the goals as possible. It is with your help the goals will be met and surpassed.

Wishing you and your family a safe, healthy, and enjoyable holiday season.

Until we meet again,

**Jessie Weir**  
Administrator



## CANADIAN GUERNSEY ASSOCIATION & GUERNSEY CATTLE BREEDERS' OF ONTARIO

Invite you to attend the  
VIRTUAL ANNUAL MEETING  
to be held on Friday, March 18, 2022 at 10:30 a.m.

Further information will follow.  
Amendments are due to the office by January 18, 2022



# 2022 Newsletter & Journal Schedule

---

May – Journal (copy due April 1<sup>st</sup>)

August – Newsletter (copy due July 15<sup>th</sup>)

December – Newsletter (copy due November 15<sup>th</sup>)

## Newsletter Advertising Rates

Size	Member Rate	Non Member Rate
Full Page	\$120	\$130
Half Page	\$75	\$90
Quarter Page	\$50	\$60

Colour is available at an additional cost of \$20.

## Journal Advertising Rates

Size	Member Rate	Non Member Rate
Full Page	\$240	\$420
Half Page	\$150	\$240
Third Page	\$120	\$180
Quarter Page	\$100	\$150
Front Cover	\$360	n/a

All advertisements in the Journal are in full colour.



*Photo Contest! Keep snapping!*

Please continue to forward your candid Guernsey pictures to the office.

**The winner of the picture contest will have their winning picture on the cover of the next Journal.**

---

## Tattoo letter for 2022 is K

### 1<sup>ST</sup> YEAR 4-H MEMBERS

Guernsey Canada provides 1<sup>st</sup> year 4-H members showing a Guernsey calf with a leather halter.

