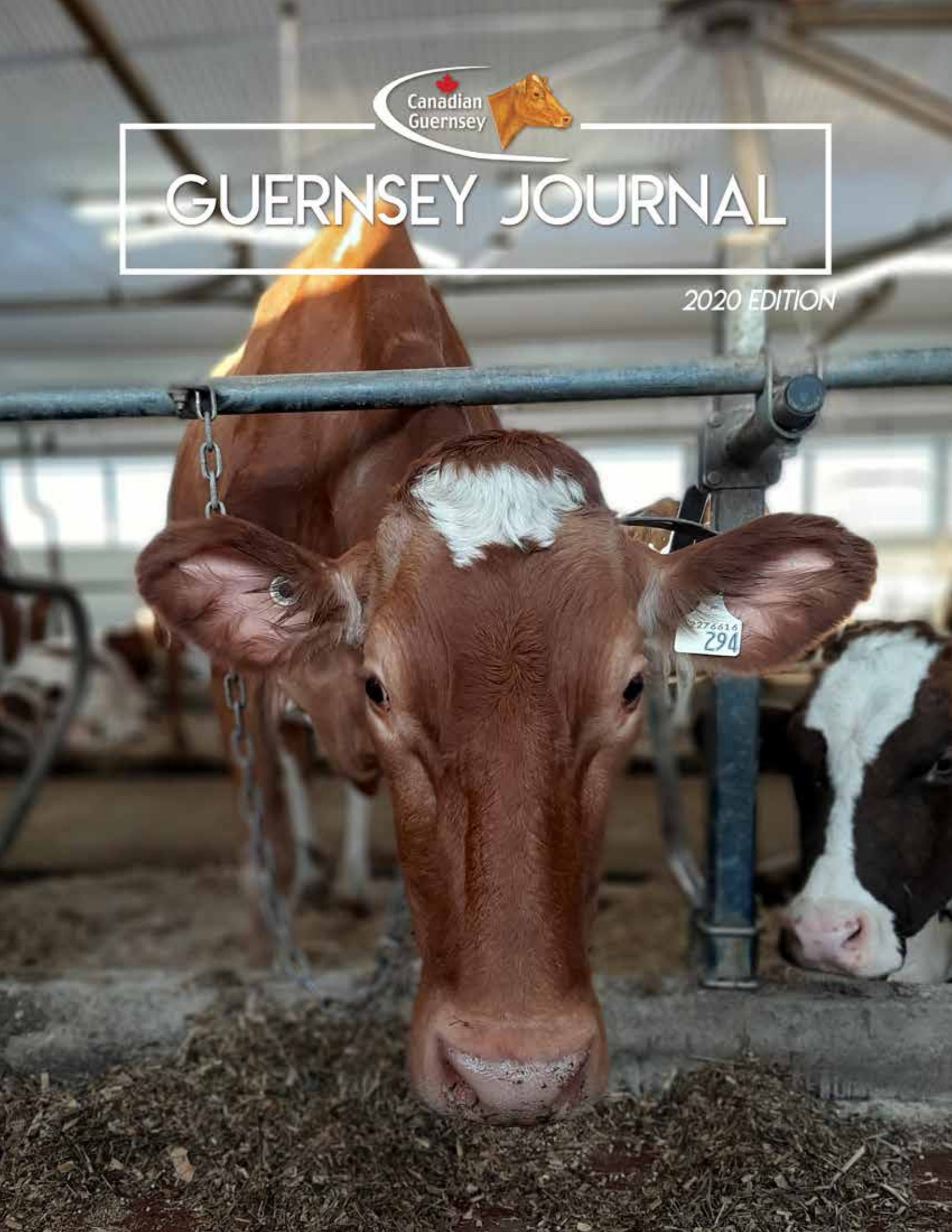




# GUERNSEY JOURNAL

2020 EDITION



# CANADIAN GUERNSEY JOURNAL

ISSN 0831-3008  
Canada Post subsidy #1364

**VOL. XCIII NO. 1**

Devoted to the Advancement of the Guernsey Breed  
Published yearly by the Canadian Guernsey Association  
Advertising Rates Available upon Request  
Canadian Guernsey Journal Magazine  
Design by Holly McFarlane

## CANADIAN GUERNSEY ASSOCIATION

### HEAD OFFICE

7660 Mill Road, Guelph, ON, N1H 6J1  
Phone: 519-836-2141, Fax: 519-763-6582  
Email: info@guernseycanada.ca  
www.guernseycanada.ca  
Second Class Mail Registration #40007699  
Subsidy # 1364

### OFFICERS & DIRECTORS

**PRESIDENT** Morris Bartlett, Caledonia, ON

**VICE-PRESIDENT** Jim Eby, Waterloo, ON

**FIELDMAN** Russell Gammon, Fergus, ON

**ADMINISTRATOR** Jessie Weir  
7660 Mill Road, Guelph, ON

### DIRECTORS

Ken Forster, Lynden, ON

Rob Forster, Lynden, ON

Scott Gordon, Rockwood, ON

Christian Kaiser, Noyan, QC

Paul MacLeod, Embro, ON

Alan Spence, Vankleek Hill, ON

John Tamis, Surrey, BC

### ONTARIO DIRECTORS

**PRESIDENT** Colin Comfort, St. Anns, ON

**VICE-PRESIDENT** Jocelyn Forster, Lynden, ON

### DIRECTORS

Morris Bartlett, Caledonia, ON

Rob Forster, Lynden, ON

Scott Gordon, Rockwood, ON

Subscription cost ~ \$15.00 Cdn annually  
(plus HST for Canadian Subscribers)

Cover photo submitted by Scott Gordon



## **2020 Table of Contents**

2020 National Guernsey Show Information	2
President's Address	3
Farm Profile: Christian Kaiser, Ferme Imperiale Senc.	4-5
CDN Genetic Evaluation Highlights - April 2020	5
Gold Star Breeder Award	5
Fieldman Reflections	6-7
Canadian National Guernsey Show 2019 Results	8-11
World Guernsey Conference Summary - Part 1	12-14
Production Records	16-17
Canadian Guernsey Annual Awards	19
Guernsey Ontario Annual Awards	19
Canadian Class Leaders	20
80 Tonne Cows	20
Superior Production Awards	21-22
National Guernsey Show Sponsors	22
Classifications	24-25
Average Production by Breed	25
CDN Top 5 Guernsey Herds by LPI	25
2020 Fee Schedule	26

## **Advertiser's Index**

Rob Forster & Family	7
Bydand Farm	15
Eby Manor Farms Inc.	18
Maplehurst Farm	23
Alan Spence	27
Comfort Farms	27
Semex	Back Cover

2020 NATIONAL GUERNSEY SHOW  
FRIDAY, SEPTEMBER 25, 2020 10:00 A.M.  
ANCASTER FAIRGROUNDS, ANCASTER, ON

# PRESIDENT'S ADDRESS

---

I hope everyone has been staying safe in these uncertain times. It has been two months since Covid 19 had taken over the world. It's hard to believe that we are in May already, grass is growing and flowers are blooming.

We chose to use a conference call to do our annual meeting this year because of the social distancing. It worked out great because we had some breeders from other provinces attend. I would like to thank everyone who attended the annual meetings. I would like to thank Jessie our administrator for setting up the meetings and her continued support.

I would like to welcome Christian Kaiser to our board of directors. I would also like to thank our fieldman, Russell, for everything he does and keeping our

facebook page updated. It's great to see that we have over 30 entries for the breeder's cup that we opened up this year to all breeders across Canada. This year it is being judged online only.

Remember our demand for our Golden Guernsey's has never been better. I would like to welcome all new breeders. It will be interesting to see if any fall fairs will be able to run this year or be postponed until next year.

Until next time, milk and love our Golden Girls, we will see you on the Golden Trail along the way, six feet apart...

**Morris Bartlett**



# FARM PROFILE



## CHRISTIAN KAISER, FERME IMPERIALE SENC. (NATIONAL GUERNSEY DIRECTOR)

### **Where are your farming operations located within Quebec?**

My father (Matthias) , brother Nathan , nephew Jonathan and I run a dairy and cropping operation in Noyan, Quebec (right on the Vermont and New York border). We also own and operate a dairy called Laiterie Chagnon for the past 3 years. The dairy is located in Waterloo, Quebec.

### **What is the scope/size of your farming and business operations?**

We have 600 head of cattle, milking around 150 cows and raise about 180 replacements a year for sale. We grow around 140ha organic corn, 130ha soybeans, 70 ha corn silage , 160ha hay and alfalfa and 249ha grain corn. We also do custom chopping , combining and levelling. The dairy is a medium size dairy that sells milk, cream, butter, ice cream and yogurt.

### **Why did you invest in Guernseys and when was the first investment?**

We bought our first guernseys in March of 2019. We were looking into making specialty products out of a different breed than Jerseys or Holsteins. We also wanted the milk to be 100% from A2A2 cows. When we started looking into the different options , we learned a lot about the Guernsey breed. Their components are ideal for processing. The Guernsey cow is also a very efficient cow. The vast majority of guernseys are A2A2 and to top it off they make Golden Milk.

### **What were your prime criteria when you went searching for Guernseys to add to your operation?**

Our first criteria was they had to be A2A2, then we wanted good commercial cows with good feet and legs and good production. At the same time as we were looking for cows to milk, we started investing in top genomic animals to

multiply. In those animals, production, components and health traits are really important.

### **How many Guernseys does your family own now?**

We own about 110 Guernseys at this time. About 50 milking and the rest are young stock.

### **Are you doing any embryo transfer work?**

We are doing embryo transfers with the top genomic heifers and with my favorite cows. It has been somewhat of a challenge to get good results. We have now identified a few animals that yield good results and will focus on them and use mostly conventional semen for flushes, which we should do anyways on top animals to get more bulls to pick from.

### **What sires are you using for matings? Why?**

Sires used are Lambeau, Theo, JC Penney, Indigo, Craig, Pharmer and Toby Keith. We are trying to use the best bulls available for every mating and also keep some diversity.

### **What have been your favourite Guernsey investments to date?**

My favorite cow to date in Oak Knob Cotter Zap. She is just the type of cow everyone would love to work with. On the heifer side, we have 3 daughters out of Coulee Crest Pilot Lava. They are just great looking heifers with awesome numbers.

### **What is the range of products made from Guernsey milk at the dairy your family has purchased?**

At the dairy we make a 5% milk in glass bottles and a 5% chocolate milk in glass bottles. We also make full fat greek yogurt in glass jars (plain, caramel and sea salt and a vanilla, with more to come).

**What steps do the Association and the breed need to take to grow the breed?**

To grow the breed, producers need to know the breed exists, then we need to quantify the efficiency of good Guernseys. We need to multiply and make available the type of cows that commercial farms want without sacrificing the breeds characteristics.

**What are Guernsey strengths and what areas need focus and improvement?**

The Guernsey cows have a real good temperament, they are really nice to work with. They eat a lot less than the Holsteins but can produce the same amount of solids. They have really high components which is good for processing and they can fit really well into grazing herds. We really need to focus on making the breed more uniform, higher total components, better fertility and livability, the two latter being the most important.

**What are your plans and goals for your Guernsey involvement?**

I really want to help the breed grow and become a real option for producers in any way I can. Our plan is to be able to sell lots of good commercial Guernseys to new Guernsey breeders. I would also like to help the board grow this breed by bringing some new ideas.

**What do you foresee for the breed in Quebec? The rest of Canada?**

This breed has lots of untapped potential. If we do the right things the numbers could explode in the next few years as we move more and more towards sustainable farming and put real numbers behind the words .

**Anything else you want to add?**

When the first cows walked off the truck in March 2019 , I fell in love with the Guernsey breed!

## CDN GENETIC EVALUATION HIGHLIGHTS - APRIL 2020

### The Guernsey Breed Welcomes Two Newly Indexed Cows Among Top 10 LPI

As the breed-leading duo stay firmly in place, namely Eby Manor D L Indy at #1 LPI (#2 Fat) and Lindrian Pamper Bear ET 200 at #2 LPI (tied #8 Conformation), two interesting newly indexed cows this round manage to achieve Top 10 status. The highest new cow is Eby Manor Julius Jocelyn who makes her debut tied at #6 LPI (#3 Fat) while Jens Gold Profit Eunice lands not far behind taking #8 LPI spot but also becomes the new breed leader for both Milk and Protein. The list of Top 5 cows is completed by the same group of elite cows as last round,

including Glen Haven Lewis Lana at #3 LPI (tied #7 Fat, #5 Protein), Eby Manor Logo Sylvia at #4 LPI (#10 Milk, tied #7 Fat, #6 Protein) and Guernsey View Urma's Expense taking #5 LPI position (#6 Fat).

Like for cows, the pair of sires leading the breed for LPI, which are also a sire-son duo, remain unchanged as Pine Ridge Double L stays at #1 LPI (#3 Fat) and Dairyman Double Dawson follows at #2 LPI (#2 Fat, #10 Protein). The Top 5 LPI list this round includes sires that had this same status in December, namely Trotacre Enhancer Lewis at #3 LPI (#3 Milk, #9 Fat, #3 Protein), Coulee Crest Grumpy Legend at #4 LPI (tied #8 Conformation) and Idle Gold E Challenge in #5 LPI position.



## Gold Star BREEDER AWARD

**Maplehurst Farm**  
Lynden, ON

**Eby Manor Farm**  
Waterloo, ON

### Congratulations on your achievement!

To achieve this honour, a homebred herd will have at least 15 completed records, with classification score average at least 82.5% and BCA 10 points above the National Herd Average for Butterfat and Protein.

# FIELDMAN REFLECTIONS

---

*Russell Gammon, Canadian Guernsey Fieldman*

We are excited to make contact with all members and Guernsey owners and fans again!

The forward-looking nature of the Board and members at our online meetings in the latter part of March was really impressive! And a bunch of good news items has helped to keep our enthusiasm level high! Among the delightful pieces of news was the expansion of the decade old Breeders Cup into a National event! By the time you read this we will know if all the potential that existed in this digital/online competition has been milked! The prospects for having cattle across Canada entered were huge! We have a great chance to show the larger public how good Canadian Guernseys are via social media! Looking into the future we hope that by May 1st we saw at least 50 entries in the five classes!

Our panel of international judges are primed to go to work! Good things can come from horrible times and the birth of this contest sure is a good thing for marketing of the breed to the wider dairy industry!

As part of further planning for a golden future a strategic planning working group has been launched. They are currently in round one of the process of drafting a plan for consideration by the Board!

If you have any ideas on how the breed association can be growing our future please let us know as soon as you can!

We are thrilled by the number of young people working with Guernsey projects in 4-H and how this number has moved up in recent years! Once things right themselves we anticipate even more growth in these numbers!

One of our 2020 projects will be ensuring that as many of the animals from the USA, that are expanding the Canadian population, as possible are registered in the Canadian herd book. And, that their owners become CGA members! Numbers grew in 2019 so we know there is more growing to do!

We have had telephone meetings with both of the Holstein Association of Canada employees who are working with us on extension work in Eastern and Western Canada. They had some very good ideas on how the breed could gain a higher

profile in this country and we have followed up with them on these prospects!

Semex have decided that it is time to get back in the game with purchase of Guernsey sires. This would be over and above any work with CGA syndicates. We are hopeful that this decision will materialize into a steady supply of high quality young sires. We foresee that the supply of available Guernsey genetic/sires will be augmented nicely by this move! Thank you, Semex for the vote of confidence. A bull is already well along in health testing!

Hopefully the great National Guernsey Show at Ancaster Fair will be a reality on September 25th.

We are ready with acceptance of the CGA offer to judge the show coming from Brent Howe of Aylmer, Ontario.

During March a couple of keen newer Canadian Guernsey owners were investing in very high quality lots in sales in the USA. One of these folks, Eric Salonen and associates from Legend Farm near New Dundee, Ontario have been welcoming shipments of cattle from the USA in recent weeks with more to come soon! The cows will be milked in a robotic milking barn.

We hear word of some serious amounts of embryo transfer work on Guernsey females so anticipate the arrival of a large



number of high pedigree calves to further grow our Canadian Golden Guernsey population!

Social media has been a valuable tool for making the world outside the breed aware of Guernsey attributes and fanning the flames of interest in Guernseys which have been burning brightly!

To date our Facebook admin team have made at least 125 posts on our Facebook page! We are moving on toward our goal of exceeding 366 posts this leap year! Send us your photos of clean, healthy cows please!

And as always, let us know how we can help you with Guernsey questions and forward your comments on what we can be doing to grow Guernsey influence in the Canadian dairy industry!

It is ALL about Golden Guernsey Growth!

Thanks to Jessie Weir for handling a ton of work on a wide range of Guernsey topics with such grace and efficiency!

Your Board is engaged and focused on the future!

As they say, so often, in Quebec: LET'S GO!!!!

Russell Gammon as in Russe!! Excited about where we are going!

*Russell Gammon*

Canadian Guernsey Fieldman  
rgammon@guernseycanada.ca

A SMALL PART OF THE MAPLEHURST HERD -

*Continuing to build for the future!*



FRANK ROBINSON

**BROADVIEW LEVI *Arlene* VG-86**  
1<sup>st</sup> 2-Yr Old & HM Grand Champion  
2019 National Guernsey Show  
Junior Champion 2018 National Guernsey Show  
Junior Champion 2017 National Guernsey Show  
Due June 2020 to Coulee Crest Grumpy Legend  
Dam: Broadview Arlie VG-85  
5-10. 365D 11188kg Milk, 5284 Kg F, 363 Kg P



DIX LEE HP GG DOMINO-ETV

**MAPLEHURST DRONE *Domino***  
Born December 15, 2019  
Sire: Hi Guern View Levi Drone  
Dam: Dix Lee HP GG Domino-ETV  
1st Senior calf 2018 National Guernsey Show  
1st Senior Yearling & Res. Jr. Champion  
2019 National Guernsey Show



ANOTHER ADDITION TO OUR HERD:

**WARWICK MANOR LS *Pretty* -ET**  
who was purchased at the 2019 Blue Halter Sale.  
2<sup>nd</sup> Int. Yearling 2019 National Guernsey Show  
Pretty is due in July to Drone. She is a Great Grand daughter to the one and only Indian Acres Pistachio Pie (Supreme Champion WDE 2007)!

*We look forward to developing all of these strong pedigreed individuals!*

**ROB, JULIE, JESSE & JOCELYN FORSTER**  
276 Highway 52, Lynden, ON L0R 1T0  
farmer9640@yahoo.ca

# CANADIAN NATIONAL GUERNSEY SHOW

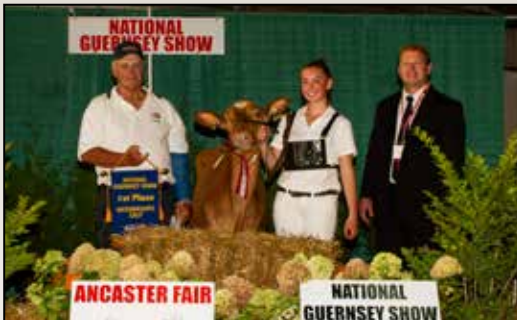
## 2019 RESULTS



Junior Calf - Maplehurst Lightning Wilma, Ken D Forster

### JUNIOR CALF | *Sponsored by Broadview Farms, Rob Beynon, Maple, ON*

- 1 **Maplehurst Lightning Wilma**, Ken D Forster
- 2 **Eby Manor Latimer Becca**, Eby Manor Farm Inc
- 3 **Don haven Lady Verona**, Bydand Farm
- 4 **Don Haven Lady Vava**, Bydand Farm
- 5 **Maplehurst Legend Loco**, Ken D Forster
- 6 **Spring Rose Levi Darcy**, Aaron Henhoeffler



Intermediate Calf - Eby Manor Lightning Lianna,  
Eby Manor Farms Ltd

### INTERMEDIATE CALF | *Sponsored by Wentworth Niagara Guernsey Club, St Anns, ON*

- 1 **Eby Manor Lightning Lianna**, Eby Manor Farm Inc
- 2 **Maplehurst Legend Lotto**, Rob Forster
- 3 **Maplehurst Leopold Gladie**, Katie Cocking
- 4 **Spring Rose Ladys Man Barbie**, Aaron Henhoeffler
- 5 **Eby Man Ladys Mano Lavender**, Eby Manor Inc



Senior Calf - Don Haven Latimer Violet, Bydand Farm

### SENIOR CALF | *Sponsored by Yantzi's Feed & Seed, Tavistock, ON*

- 1 **Don Haven Latimer Violet**, Bydand Farm
- 2 **Maplehurst Double L Abbs**, Ken D Forster
- 3 **Comfort Farms Audra**, Comfort Farms
- 4 **Maplehurst Pistoll Gwenith**, Ken D Forster
- 5 **Maplehurst Ladysman Hopeful**, 2 Bridges Farm
- 6 **Holdfast Double Pilot Emma**, Selkirk View Farms



Intermediate Yearling - Don Haven Latimer Vi, Bydand Farm

### INTERMEDIATE YEARLING | *Sponsored by Upper Canada Cheese Company, Jordan Station, ON*

- 1 **Don Haven Latimer Vi**, Bydand Farm
- 2 **Warwick Manor LS Pretty (ET)**, Jocelyn Forster
- 3 **Eby Manor Lightning Felicia**, Eby Manor Farm Inc
- 4 **Comfort Farms Lua**, Comfort Farms
- 5 **Shady Haven Ginger**, Caitlynn Noble
- 6 **Selkirk Daunte Leanne**, Selkirk View Farms





Senior Yearling - Dix Lee GP GG Domino-ETV, Jocelyn Forster

**SENIOR YEARLING** | *Sponsored by EastGen, Guelph, ON*

- 1 Dix Lee GP GG Domino-ETV, Jocelyn Forster
- 2 Eby Manor Norval Wreath, Eby Manor Farm Inc
- 3 Maplehurst Pistoll Trudee, Ken D Forster
- 4 Don Haven Kakadu Velma, Bydand Farm
- 5 Comfort Farms Phoenix, Comfort Farms



Junior Champion - Don Latimer Vi, Bydand Farm  
Res. Junior Champion - Dix Lee HP GG Domino-ETV, Jocelyn Forster

**JUNIOR CHAMPION** | *Sponsored by Eldale Veterinary Clinic, Elmira, ON*  
Don Haven Latimer Vi, Bydand Farm

**RESERVE JUNIOR CHAMPION** | *Sponsored by Eby Manor Farms Inc, Waterloo, ON*  
Dix Lee HP GG Domino-ETV, Jocelyn Forster

**H.M. JUNIOR CHAMPION** Maplehurst Lightning Wilma, Ken D Forster



Junior Herd - Scott Gordon

**JUNIOR HERD** | *Sponsored by Conestogo Agri Systems Inc., Alma, ON*

- 1 Scott Gordon
- 2 Ken D Forster
- 3 James Eby
- 4 Comfort Farms
- 5 Selkirk View Farms



Junior Showmanship - Brandon Bartlett

**JUNIOR SHOWMANSHIP** | *Sponsored by Canadian Guernsey, Guelph, ON*

- |                             |                     |
|-----------------------------|---------------------|
| 1 Brandon Bartlett          | 8 Aaron Henhoeffler |
| 2 Sarah Verhey              | 9 Jack Melia        |
| 3 Madison Bartlett          | 10 Jennika Fuller   |
| 4 Adrianna Barnia-Plazzotta | 11 Abbey Cocking    |
| 5 Caitlynn Noble            | 12 Katie Cocking    |
| 6 Deborah Eby               | 13 Brock Bartlett   |
| 7 Sarah Peck                |                     |



PeeWee Showmanship - Tyson Eby-Allan

**PEEWEE SHOWMANSHIP** | *Sponsored by Canadian Guernsey, Guelph, ON*

- 1 Tyson Eby-Allan
- 2 Olwynn Lindsay
- 3 Edith Lindsay
- 4 Iris Lindsay



Dry Cow - Maplehurst Legend Wise, Ken D Forster

**DRY COW | Sponsored by Genex, Guelph, ON**

- 1 Maplehurst Legend Wise, Ken D Forster
- 2 Maplehurst Turley Great, Ken D Forster
- 3 Selkirk Python Lynette, Selkirk View Farms



2 Year Old - Broadview Levi Arlene, Rob Forster

**2 YEAR OLD | Sponsored by Ken D Forster, Lynden, ON**

- 1 Broadview Levi Arlene, Rob Forster
- 2 Don Haven Latimer Vespa, Bydand Farm
- 3 Eby Manor Jaguar Faith, Eby Manor Farm Inc
- 4 Eby Manor Kakdu Faye, Eby Manor Farm Inc
- 5 Eby Manor Ernie Jana, Eby Manor Farm Inc
- 6 Maplehurst Pistoll Trip, Ken D Forster
- 7 Don Haven Latimer Vavoom, Bydand Farm
- 8 Comfort Farms Lynsey, Comfort Farms



3 Year Old - Maplehurst Jaguar Lucy, Ken D Forster

**3 YEAR OLD | Sponsored by Dundas Animal Hospital, Dundas, ON**

- 1 Maplehurst Jaquar Lucy, Ken D Forster
- 2 Maplehurst Legend Whisper, Ken D Forster
- 3 Maplehurst Jaguar Natcho, Ken D Forster
- 4 Broadview Levi Apple, Bydand Farm
- 5 Eby Manor Jethro Beatrice, Eby Manor Farm Inc
- 6 Comfort Farms Lumen, Comfort Farms
- 7 Comfort Farms Gabrielle, Comfort Farms



4 Year Old - Maplehurst Legend Cutie, Ken D Forster

**4 YEAR OLD | Sponsored by WS Feed & Supplies, Conestogo, ON**

- 1 Maplehurst Legend Cutie, Ken D Forster
- 2 Comfort Farms Ellery, Comfort Farms
- 3 Comfort Farms Jedi, Comfort Farms
- 4 Coulee Crest Carter Lindy, Jocelyn Forster



5 Year Old - Maplehurst Pheonix Blaze, Ken D Forster

**5 YEAR OLD | Sponsored by Floradale Feed Mill, Conestogo, ON**

- 1 Maplehurst Phoenix Blaze, Ken D Forster
- 2 Maplehurst Legend Gladys, Ken D Forster
- 3 Eby Manor D L Indy, Eby Manor Farm Inc
- 4 Maplehurst Archie Bingo, Ken D Forster
- 5 Comfort Farms Sharon 2, Comfort Farms
- 6 Maplehurst Pradas Whisk, Ken D Forster
- 7 Don Haven Titan Vision, Bydand Farm



Breeder's Herd - Ken D. Forster

**BREEDER'S HERD** | *Sponsored by Select Sires Generations, Kemptville, ON*

- 1 Ken D Forster
- 2 James Eby
- 3 Scott Gordon
- 4 Comfort Farms



Premier Exhibitor & Premier Breeder -  
Maplehurst, Ken D Forster

**PROGENY OF DAM** | *Sponsored by RKD Web Studios, Guelph, ON*

None shown

**PREMIER EXHIBITOR** | *Sponsored by Ayr Farmers Mutual Ins. Co.*

Maplehurst, Ken D Forster



Grand Champion Cow - Maplehurst Jaquar Lucy, Ken D Forster

**PREMIER BREEDER** | *Sponsored by Ayr Farmers Mutual Ins. Co.*

Maplehurst, Ken D Forster

**GRAND CHAMPION FEMALE** | *Sponsored by Quality Seeds Ltd., Woodbridge, ON*

Maplehurst Jaquar Lucy, Ken D Forster



Res. Grand Champion Cow - Maplehurst Pheonix Blaze,  
Ken D Forster

**RES. GRAND CHAMPION FEMALE** | *Sponsored by Bruce & Sherry Telfer, Paris, ON*

Maplehurst Phoenix Blaze, Ken D Forster

**LACTANET AWARD** | *Sponsored by Lactanet, Guelph, ON*

Maplehurst Turley Great, Ken D Forster



Herdsmen Award - Eby Manor Farms

**HERDSMAN AWARD** | *Sponsored by Ken & Marie McNabb, New Hamburg, ON*

Eby Manor Farms

**PHOTOGRAPHY** | *Frank Robinson*

# WORLD GUERNSEY CONFERENCE SUMMARY

---

***Thank you to Courtney Walker for providing a detailed summary of the numerous farm visits, sites of interest and World Guernsey conference summary. As the full report is ten pages and filled with great information the summary has been split into 3 parts. The first part will be printed in the Guernsey Journal, second in the August newsletter and final in the December newsletter.***

All great WGCF conferences have a fantastic pre-conference tour in front of them, and John & Patty McMurray had arranged the trip of a lifetime for the USA. Starting in Houston, Texas, we thought we would have a cow free day touring the Johnson Space Center, but lo and behold there were Texan Longhorns grazing in the field nearby! The great part of these tours is experiencing the host country, as well as seeing great herds as well.

## **23/5**

Our next day was a visit to the impressive facility of ST Genetics in Fort Worth. Viewing the ET and collection facilities, we were able to see the work going on improving many beef client's herds, and a number of animals destined for South America. We also viewed the GrowSafe trial pens which are contributing to ST's Ecofeed breeding value, looking to find those animals most efficient with their feed. Looking forward to seeing Guernseys being put forward in these trials!

Back at the offices, there were some thought provoking presentations on the ways we can utilise genetics and genomics to improve the breed and our own herds. Also of interest was the history of sexed semen and how ST are working to improve the technology and the success rate of the straws. With their interest in the Guernsey breed and supplying sexed it is certainly one area of keen interest.

From there we headed off to our hotel before adventuring out for a night on the town at Billy Bob's Honkeytonk – apparently the largest honkytonk around. We were treated to some line dancing lessons and got up to some great boot scooting before dinner, with a few extra rounds of the dancefloor for the younger members of the group.

## **24/5**

Next up was the AT&T stadium at Arlington, home of the Dallas Cowboys. An impressive piece of architecture, this stadium is a multipurpose events centre with an amazing hidden team behind the scenes to keep it running. We're able to spend a bit

of time on the hallowed turf, and get some great views up on the VIP decks!

From there we return to Fort Worth to explore the historic stockyards. Cowboy boots galore, there is a re-enactment of when the longhorns would be mustered into the stockyards, and the herd of steers ambles down the cobblestoned roads. To top it off, in the evening we're treated to a rodeo full of entertainment of whips & lassos, bull-riding, and barrel racing with some incredible riders and amazingly muscled true quarter horses.

## **25/5**

With the group starting to suffer cow withdrawals, we headed off towards Lavon Farms. The Moore family are milking approximately 400 cows being a 50/50 split with Jerseys – lucky for us, we only see the sorted herd of Golden Guernseys – a lovely uninterrupted view. The herd is essentially grazing only with a ration in the bail at milking, and locomotion is a feature of the herd. With the Texan heat, teams of bulls are used, with the milk from the cows going into branded Lucky Layla products – drinking yogurt being a best seller.

Some of the standouts were a 4 year old 2nd lactation Novak daughter, a 5 year old 3rd Lactation Conqueror daughter; offspring of a homebred bull sired by Royal Oak Royalty, a 9 year old by Aaron, and multiple neat udder Behold daughters. From Lavon Farms it's on the road to Oklahoma City.

## **26/5**

A slightly concerning evening where tornado alerts caused some concerns, but the morning was clear and we headed to the National Cowboy and Western Heritage Museum. An amazing insight into how the West was developed, the life of a cowboy and what it was like out in the 'Wild West'. Outside the Chuck Wagon festival was in full swing, with sample settler fare being prepared over campfire. A real-life Annie Oakley demonstrated some remarkable sharp shooting. A thoroughly enjoyable mix of art, history and culture. From there it was the drive to Tulsa, OK.

## **27/5**

The following day we headed off to Branson, Missouri, but not before stopping in to the Bass Pro Shop and Wonders of Wildlife National Museum & Aquarium. Talk about a sleeper feature of the tour! An amazing aquarium filled with an amazing array of live animals, and then the museum being filled with stunning taxidermy specimens – an interesting place that was focussed

on history and conservation. Our journey onwards got us to Branson in time for the fabulous show at Dolly Parton's Dixie Stampeder. Brilliant horsemanship, dancing and entertainment capped off by delicious feast.

### **28/5**

The bus was pretty excited for the following day we started the part we'd been looking forward to – Guernsey cows! The late morning was spent looking around the herd of the Dixon family – 60 grazed cows who on the day were enjoying the sunshine. A standout was the rising 19 year old cow Dix Lee Gargoyle Dela EX91 who had 15 lactations under her belt and was still going strong – even if moving a bit slower than some of her younger herdmates. We got to see a number of young daughters of the Dixon's own bull Jester Freedom – open, silky dairy cows with high and wide snug udders. There are also a few Dudes (Dela's son), with the heifers exhibiting good strength and width from front to back.

There are a number of different bulls represented in the overall herd, but the Dixons have pulled out a few standout numbers into the catering tent along with Brett's cows from Still Dreamin dairy. Tinkerbell (Aaron) and Fawn EX-93 (Kojack) make lunch a very pleasant affair. Missouri hospitality is in full swing and we are treated to a full cookout to enjoy. From Dix Lee we start the long drive to Keokuk, IA, taking in the open plains of the Mid-West, and seeing firsthand the tornado destruction that we seem to either be just in front of, or just behind.

### **29/5**

In Iowa we visit the Knapps herd of Guernseys – where the barn is full of Tambourine and Tamera family members. Some of the pics were some neat Copper daughters, and early milking Top Gun 2 years olds – very fresh (under 2 weeks) but promising. There are also some lovely older Pilots maturing nicely. There is a big mix of young sires and proven bulls – the Knapps are using the right bull for the cow rather than the latest numbers. Over a delicious lunch we are visited by the Church family & the Dindermans also drop in for the day. Unfortunately we can't quite wrangle a visit out to see Diva! From Knapps it is onwards to Prairie du Chein, WI.

### **30/5**

An early start to the day with 3 herds on the cards. First up is Coulee Crest Guernseys. The family run operation has moved to a freestall operation with a compost pack, and boasts an RHA over 9000 kg Milk. A large number of animals have been shipped to Canada and other parts of the US to start new herd, but the quality is strong and consistent throughout the herd. There are some nice Logo daughters her, a balance of dairyness and strength with silky udders. There's also good bone quality

throughout the herd as we walk past the cows at the back where they have been locked into the headstalls so we can see individual animals, and quality feet and legs.

There are groups by Latimer, Copper and Novak who are neat and correct getting the job done. The young Lava cow sired by Pilot who is #50 on the CPI list is a favourite, along with some hard working American Pie daughters in the compost barn. A treat is getting to see Lorilyn still going strong, if a little heavy! Yet another delicious lunch – enjoying Guernsey beef hamburgers.

Onwards we head out to Lang Haven, where the Langrehr family milk around 70 cows in a 50/50 Guernsey/Holstein split. We get to see multiple relatives of the very successful Nicolette family. There is a wide variety of sires used – we get to see daughters sired by Novak, Network, Latimer, Laredo, Prada and Alstar. A pick is a Blue Spruce who had 5 calves under her belt and still had an udder above the hock.

Afternoon tea of Wisconsin cheese platters and ice cream thanks to the Wisconsin Breeders association goes down a treat in the warm weather.

On the way to Deb Lakeys' Prairie Cream heifers, we visit the Lock & Dam No. 6 at Trempealeau and learn a bit about the history of the lock network, which is currently open due to flooding of the Mississippi river. At Deb's there's a great array of Guernsey memorabilia as well as some extremely well grown heifers. When the cows calve they are sent to either Valley Gem or Coulee Crest.

We're treated to wine tasting at the local vineyard before dinner in the local region with Guernsey breeders before heading onwards to Eau Claire.

### **31/5**

In the heart of Wisconsin it's time for a full day of Guernseys with the Jensions. We start with Golden J – where Trent & Leann are celebrating 20 years, with their children now actively farming with them. Chelsea leads us through the fastidiously labelled herd – 85 strong being rotated through a 50-cow tie stall barn. With an RHA just shy of 8500kg milk 4.8% fat, the herd is a reflection of the quality of young sires available in the Guernsey breed, and Guernsey Gold Sires fill the calf pens – which is also reflected later at Idle Gold.

We see some standout Novak daughters – on their 2nd lactations, the width and ligament has been a standout on the trip so far. We see more neat Logo daughters and some nice older cows. The consistency of the herd is apparent, with width and strength being a feature.

Refreshments (chocolate milk of course) matched with a marshmallow chocolate slice is a break on the way to the Jens Gold herd. There are some wonderful older cows here, with a standout being the dam of Copper Coin, Jens Gold Grumpy Cocoa – EX90 and still going strong on her current lactation. We see some extremely balanced Copper daughters – width at front end, great mammarys and open rib. In the freestall barn there is a neat 2nd lactation Reggie daughter that attract the eye; some Logo daughters with considerable strength and power and more Copper/Challenge/Caspian daughters who have width of chest, a good amount of rib and solid attachments.

The lunch at the local church is a feast – provided by the Jenson family – we have certainly not been underfed on this trip! We travel to Valley Gem farms – Brandon & the team milk a number of different breeds as well as purebreds and are a great showcase for crossbreeding with Guernseys for crossbred animals so nice they are upgraded to purebred Guernseys. Valley Gem are active in the show ring, and the Guernseys are split out to allow us to observe. Deb has a number of her cows here also, including a fresh young Lonestar who has only calved 5 days.

We then head to Neil & Janice Jensens – Idle Gold Guernseys. The Jensions now have 300 animals on farm, with 120 Guernseys. The Holsteins on farm are here to carry Guernsey embryos, and if crossbred to Guernsey are then started on the grading up process. Idle Gold has a RHA of 7900kg M at 4.7%F 3.5%P. During the summer months the cows are grazed, then supplemented with a TMR. In winter the TMR becomes the bulk of their diet.

Neil uses just about every young sire who comes through, so there is extensive use of young bulls throughout. There are some standout cows – an EX-93 Grumpy, an EX91 Hawk and the now famous bull mother, the EX90-3yr Hera, the dam of Herald-P. Daughters of Lonestar, Jaguar, Winslow, Logo feature. There is also a daughter of Kakadu in milk. All open-ribbed, walk on great feet & legs, with strong mammary systems. The cows then head into milk, and we check out the heifers – daughters of Prince Charming, Renegade, Toby etc fill the pens. There's also some great crossbred daughters showcasing the value of the Guernsey breed.

We're treated to a lovely meal thanks to the Wisconsin Breeders Association – it's a great chance to catch up with the local breeders and relax for a short while.

## 1/6

The start of June has us travelling along the Wisconsin countryside to visit Gurn-Z Meadow, a 120 cow herd that is 70% Holstein, 30% Guernsey being milked by 2 Lely A4 robots. The

focus here is on high DPR/health traits along with production – with the Guernseys that are here being equal or better than the Holsteins for milk solids, and getting in calf within 150 days. The new facility was built in 2012, and the cows are milked on average 2.8x per day for an RHA if 10,780 kg M 4.5%F and 3.4%P. Julie commented that the Guernseys were faster to train up than the Holsteins into the robot milkers! In the barns we see some solid cows thriving in the freestalls. There are Cordell, Judgement, Sputnik and Copper daughters as well as some Latimer and Top Notch daughters. With the focus on health traits and the need for the udders to be correct for the robots, the udders are all above the hock, with ideal teat placement. The majority of the cows we view are 1st or 2nd lactation and classified between 80-85 points. They are balanced young cows which makes it exciting to think of how they will develop over further lactations into cows with strength.

The family is currently working on producing their own artisanal dairy products, of which we get to sample a delicious range of homemade flavoured butters, and cheeses that are made with the Orchards milk. There is also ice cream from the local creamery that Gurn-Z Meadow supplies.

As thunderstorms loom we roll out of the farm onwards to Fort Atkinson, WI.

We head to Hoard's Dairyman – immediately apparent is the brand new freestall barn, with 4 brand new DeLaval robots milking the 200 Guernsey cows. Jason Yurs, the herd manager is tired as the robots only started up on Wednesday, and each of the cows' udder pattern has had to be programmed into the computer. However, the majority of the cows have already learnt the behaviour of coming into the robots to be milked, but we stay on the outside of the freestall in order to keep further disturbance to a minimum.

Hoard's Dairyman is the oldest continually tested and registered herd of purebred Guernseys in America, since WD Hoard set up the dairy in 1885. The farm was designed to showcase best practices in animal health, cropping and production and communicate this through the Hoards Dairyman magazine.

Since Jason has taken over the breeding focus has moved to DPR and health traits, and the number of Jerseys on the farm has dropped as the Guernseys have outcompeted their herd mates on an efficiency per kg/milk solids basis and are back to being the dominant breed on the farm.

As we walk through the new robotic milking barn, the cows we see are strong, wide and open-ribbed with well attached udders. They carry slightly more condition, but bone quality

**...continued on Page 22**

# BRED TO Impress



Photo: Frank Robinson

## DON HAVEN LATIMER VI

1<sup>st</sup> Junior Yearling and Junior Champion  
at the 2019 Canadian National Show & Rockton Fair.

Coulee Crest Fame Latimer x VG-87 Titan X GP-83 Yoglobear X  
VG-88 Royalty (Grand Champion Rockton 2010) x EX-92-4E Magicman



Photo: Frank Robinson  
Dam of Don Haven Latimer VI

## DON HAVEN TITAN VIVIAN VG-87

Lifetime 23,146 kg M 5.2F 3.5P  
1<sup>st</sup> 2-Yr. Old Canadian National Show 2016  
2<sup>nd</sup> 4-Yr. Old & Production Award Winner 2018  
Canadian National Show & Rockton Fair



Don Haven Latimer Vespa



Don Haven Latimer Violet - 1<sup>st</sup> Senior Calf Canadian National Show & Rockton Fair.  
1<sup>st</sup> Junior Herd Canadian National Show & Rockton Fair

Don Haven Latimer Vespa - 2<sup>nd</sup> 2-Yr. Old Canadian National Show & Rockton Fair (Reserve Grand Champion, Rockton)

## BYDAND FARM

Scott & Katrina Gordon  
Hanna & Kayla  
(519) 994-6910

Bydand Holsteins & Don Haven Guernseys and Ayrshires  
5436 Wellington Rd. 29, Rockwood, ON N0B 2K0  
bydandfarm@gmail.com

John & Nancy  
(519) 824-9548

# PRODUCTION RECORDS

Production Records completed January - April 2020 and listed by composite BCA

## Yearlings

GUCANF12615110	DON HAVEN LATIMERVAVOOM	PB	GP	84	1	11	7100	338	4.8	254	3.6	260	247	262	769	SCOTT GORDON	ON
GUCANF12292481	MAPLEHURST NAVARRO BRIDGET	PB	GP	84	1	11	7363	306	4.2	250	3.4	259	215	248	722	KEN D FORSTER	ON
GUCANF11902339	COMFORT FARMS EDWINA	PB	G	78	1	11	6332	278	4.4	211	3.3	225	197	211	633	COMFORT FARMS LTD	ON
<b>Jr. 2 Year Old</b>																	
GUCANF12062996	EBY MANOR JETHRO EMILY	PB	GP	83	2	2	8528	425	5.0	294	3.5	285	285	275	845	EBY MANOR LTD	ON
GUCANF12615109	DON HAVEN LATIMER VESPA	PB	VG	86	2	0	7602	363	4.8	285	3.8	276	265	291	832	SCOTT GORDON	ON
GUCANF12062993	EBY MANOR JETHRO WANITA	PB	GP	83	2	1	8799	381	4.3	271	3.1	295	257	256	808	EBY MANOR LTD	ON
GUCANF12063008	EBY MANOR JULIUS IRIS	PB	GP	83	2	0	6028	357	5.9	240	4.0	218	257	243	718	EBY MANOR LTD	ON
GUCANF12063002	EBY MANOR NAVAJO ISLA	PB	GP	83	2	1	7290	362	5.0	234	3.2	246	246	223	715	EBY MANOR LTD	ON
GUCANF12677171	LINDRIAN PASSIVE RUSSEL	PB	GP	81	2	0	6853	338	4.9	234	3.4	238	235	227	700	JOHN & LINDA TAMIS	BC
GUCANF12062986	EBY MANOR NAVAJO INSPIRATION	PB	GP	82	2	2	7225	356	4.9	232	3.2	235	233	213	681	EBY MANOR LTD	ON
GUCANF12062997	EBY MANOR NAVARRO LAURA	PB			2	4	6665	330	5.0	231	3.5	226	221	220	667	EBY MANOR LTD	ON

## Sr. 2 Year Old

GUCANF12251483	BEAVERWOOD CIMERON'S DIANNE	PB			2	7	7806	343	4.4	275	3.5	250	218	248	716	BEAVERWOOD FARMS	NB
GUCANF12062979	EBY MANOR JETHRO BEATRICE	PB	VG	86	2	11	7164	309	4.3	251	3.5	221	190	216	627	EBY MANOR LTD	ON
GUCANF12251484	BEAVERWOOD CIMERON'S DEVON	PB			2	6	5662	307	5.4	223	3.9	183	197	203	583	BEAVERWOOD FARMS	NB
GUCANF12292467	MAPLEHURST JAGUAR PEANUTS	PB	VG	86	2	7	5608	275	4.9	214	3.8	179	175	193	547	KEN D FORSTER	ON
GUCANF12251477	BEAVERWOOD LOGO'S DELLA	PB			2	8	5948	269	4.5	216	3.6	184	167	188	539	BEAVERWOOD FARMS	NB
GUCANF12082859	SLEEPY HOLLOW ROSIE	PB	GP	82	2	9	6204	277	4.5	209	3.4	188	167	179	534	BRETT ALDERS	ON

## Jr. 3 Year Old

GUCANF12062980	EBY MANOR LOGO SYLVIA	PB	GP	82	3	0	11432	537	4.7	375	3.3	359	334	332	1025	EBY MANOR LTD	ON
GUCANF12062968	EBY MANOR CASPIAN KARA	PB	GP	83	3	3	9266	463	5.0	339	3.7	273	272	280	825	EBY MANOR LTD	ON
GUCANF12121709	SHOWCASE LEGEND MAGIC	PB	G	77	3	5	7963	379	4.8	280	3.5	228	217	226	671	NATIONAL MUSEUM	ON
GUCANF12292454	MAPLEHURST JAGUAR NATCHO	PB	VG	85	3	1	7878	325	4.1	262	3.3	239	196	224	659	KEN D FORSTER	ON
GUCANF12062967	EBY MANOR PILOT SIERRA	PB	GP	83	3	3	7481	321	4.3	276	3.7	219	188	226	633	EBY MANOR LTD	ON
GUCANF12276617	DON HAVEN PILOT VINNI	PB	G	78	3	0	6099	305	5.0	209	3.4	198	196	190	584	JOHN W GORDON	ON
GUCANF11902325	COMFORT FARMS LYRA	PB	GP	80	3	2	5776	268	4.6	208	3.6	179	163	181	523	COMFORT FARMS LTD	ON
GUCANF12470405	GUERNSEY VIEW WHIS CANDY	PB	VG	85	3	0	5474	276	5.0	198	3.6	164	165	166	495	WANAMAKER BROTH-	NB
GUCANF12251455	BEAVERWOOD GOTCHA'S COOKIE	PB			3	2	5465	287	5.2	193	3.5	163	169	162	494	BEAVERWOOD FARMS	NB

## Sr. 3 Year Old

GUCANF12292441	MAPLEHURST PILOT RESCUE	PB	VG	86	3	6	7769	382	4.9	287	3.7	227	222	235	684	KEN D FORSTER	ON
GUCANF12251445	BEAVERWOOD LEGION'S CORAL	PB			3	9	6431	374	5.8	245	3.8	182	213	194	589	BEAVERWOOD FARMS	NB
GUCANF11902308	COMFORT FARMS ELLERY	PB	GP	83	3	7	7151	296	4.1	239	3.3	208	171	196	575	COMFORT FARMS LTD	ON
GUUSAF78004856	MAR MILK JOSEPHINE JAMESON GEO	PB	VG	85	3	11	6507	317	4.9	234	3.6	185	180	187	552	WANAMAKER BROTH-	NB
GUCANF12251460	BEAVERWOOD LEVI'S CHANTAL	PB			3	8	6223	291	4.7	224	3.6	188	173	190	551	BEAVERWOOD FARMS	NB



# PRODUCTION RECORDS

Production Records completed January - April 2020 and listed by composite BCA

## 4 Year Old

GUCANF11356253	MAPLEHURST LEGEND CUTIE	PB	EX	90	4	3	9904	475	4.8	374	3.8	271	260	288	819	KEN D FORSTER	ON
GUCANF11632483	LINDRIAN LEGEND PATI	PB	VG	85	4	3	9113	389	4.3	323	3.5	266	225	265	756	JOHN & LINDA TAMIS	BC
GUCANF12251435	BEAVERWOOD SHERMAN'S MAKAYLA	PB			4	1	8452	414	4.9	299	3.5	233	229	232	694	BEAVERWOOD FARMS	NB
GUCANF11755696	BEAVERWOOD BRUCE'S HONEY	PB			4	7	8643	409	4.7	312	3.6	232	219	236	687	BEAVERWOOD FARMS	NB
GUUSAF78004247	COULLEE CREST CARTER LINDY ET	PB	EX	90	4	4	8256	341	4.1	273	3.3	237	194	220	651	JOCELYN FORSTER	ON
GUCANF12088219	BEAVERWOOD DAWSON'S ANNIE	PB			4	7	8153	351	4.3	273	3.4	225	193	212	630	BEAVERWOOD FARMS	NB
GUCANF11787135	WINTERTHyme NAVAJO SAGE	PB	EX	90	4	1	6992	264	3.8	251	3.6	203	152	204	559	LISA FREEZE	NB
GUCANF12251439	BEAVERWOOD SHERMAN'S CINDY	PB			4	2	6050	326	5.4	216	3.6	170	182	170	522	BEAVERWOOD	NB
GUCANF11902292	COMFORT FARMS JEDI	PB	GP	82	4	4	6246	246	3.9	223	3.6	171	135	172	478	COMFORT FARMS LTD	ON

## 5 Year Old

GUCANF11464475	GREENBROOK CANDY BLUE SPRUCE	PB	VG	85	5	4	11018	518	4.7	396	3.6	297	277	300	874	EBY MANOR LTD	ON
GUCANF11553878	EBY MANOR PIES WINTTANA	PB	GP	81	5	10	8470	414	4.9	305	3.6	226	223	228	677	EBY MANOR LTD	ON
GUCANF11755683	BEAVERWOOD MINT'S ANDI	PB			5	0	7565	425	5.6	301	4.0	200	226	225	651	BEAVERWOOD FARMS	NB
GUCANF11790176	CEDAR ROCK BIGSHOTTOO DIME	PB	EX	90	5	1	6083	373	6.1	268	4.4	179	216	221	616	WANAMAKER BROTH-	NB
GUCANF11356240	MAPLEHURST LES LOGIC	PB	VG	88	5	0	7376	369	5.0	258	3.5	206	205	203	614	KEN D FORSTER	ON
GUCANF12031145	DON HAVEN TITAN VISION	PB	VG	85	5	0	6110	297	4.9	221	3.6	178	173	181	532	SCOTT GORDON	ON
GUCANF11755690	BEAVERWOOD SPRUCE'S KELLY	PB			5	2	6719	267	4.0	215	3.2	182	144	163	489	BEAVERWOOD FARMS	NB
GUCANF11755677	BEAVERWOOD VIP'S DAWN 3	PB			5	8	5053	247	4.9	176	3.5	145	142	142	429	BEAVERWOOD FARMS	NB

## Mature Cow

GUCANF11553855	EBY MANOR D L JULIE	75	VG	86	6	6	11056	539	4.9	379	3.4	287	285	277	849	EBY MANOR LTD	ON
GUCANF11553843	EBY MANOR VANCE FERN	PB	VG	87	6	8	10034	447	4.5	319	3.2	258	234	231	723	EBY MANOR LTD	ON
GUCANF10996410	COMFORT FARMS AVATARIAN	PB	G	78	6	8	8748	368	4.2	311	3.6	253	211	253	717	COMFORT FARMS LTD	ON
GUCANF1120500	EBY MANOR MOREY SPECIAL	PB	EX	90	8	5	8920	420	4.7	317	3.5	232	227	231	690	EBY MANOR LTD	ON
GUCANF11553846	EBY MANOR PRADA PORCHA	PB	EX	91	6	7	8307	407	4.9	302	3.6	214	213	219	646	EBY MANOR LTD	ON
GUCANF11755646	BEAVERWOOD POPEYE'S PAMELA	PB			6	2	6494	324	5.0	226	3.5	168	170	164	502	BEAVERWOOD FARMS	NB
GUCANF10837658	CEDAR ROCK JUDGEMENT JENNY	PB	VG	86	7	10	6515	306	4.7	227	3.5	168	164	164	496	WANAMAKER BROTH-	NB
GUCANF9668153	CEDAR ROCK RD. BABE	PB	GP	83	9	11	5540	259	4.7	190	3.4	146	144	141	431	WANAMAKER BROTH-	NB
GUCANF11255626	BEAVERWOOD LEON'S DANIELLE	PB			6	10	4481	203	4.5	154	3.4	130	119	125	374	BEAVERWOOD FARMS	NB

## Aged Cow

GUCANF7886213	MATT-AMIA TROMBONE BONNIE-SUE	PB	EX	90	13	7	9981	430	4.3	349	3.5	305	281	298	884	CARDINAL CREEK	ON
GUCANF7868072	BROADVIEW TULIP 2	PB	EX	92	11	8	9127	386	4.2	292	3.2	252	227	226	705	MORRIS & PENNY	ON

# EBY MANOR FARMS INC.

Growing demand for quality Guernsey milk products has translated into an unprecedented demand for Guernsey cattle.



Guernsey milk products are now being produced, processed, and marketing in British Columbia, Ontario and Quebec, as well as a growing number of places in the USA. It is exciting to be part of the rebirth of our wonderful breed.

## EBY MANOR INC.

1174 Weeby Place

RR 1, Waterloo, ON N2J 4G8

[www.ebymanor.ca](http://www.ebymanor.ca) [info@ebymanor.ca](mailto:info@ebymanor.ca)

**Jim & Ruth Eby**  
519-664-2560

**Ben & Sheri Eby**  
519-664-2819

# CANADIAN GUERNSEY ASSOCIATION ANNUAL AWARDS 2019

---

## MARSHDENE FARMS AWARD

To the Highest Lifetime Butterfat Producer completing a record in 2019

### BIG SPRING DECISION WANDA (VG)

**3900** kg in 9 lactations

Eby Manor Ltd, Waterloo, ON

## CALLUMLEA FARM AWARD

To the Highest Lifetime Protein Producer completing a record in 2019

### BIG SPRING DECISION WANDA (VG)

**2820** kg in 9 lactations

Eby Manor Ltd, Waterloo, ON

## GARTMORE FARMS AWARD

For the Highest Increase in BCA over the previous year (2018–2019)

### EBY MANOR LTD., WATERLOO, ON

2017 BCA 481 – 2018 BCA 506 – Increase **25**

## LINDRIAN FARMS AWARD

For the Highest Butterfat Herd Average (kg) 2018

### EBY MANOR LTD., WATERLOO, ON

61 records 8537 415 295 BCA 260M **253F** 253P

## CHINOOK CREST DAIRY AWARD

For the Highest Protein Herd Average (kg) 2018

### EBY MANOR LTD., WATERLOO, ON

61 records 8537 415 295 BCA 260M 253F **253P**

## LINDLEY FARM AWARD

For the Highest Composite Breed Class Average 2018

### EBY MANOR LTD., WATERLOO, ON

BCA 253F 253P = Fat + Protein BCA Total **506**

# GUERNSEY CATTLE BREEDERS' ASSOCIATION OF ONTARIO ANNUAL AWARDS 2019

---

## Ontario Guernsey Association

Awarded to the Breeder and Owner of the **Grand Champion Cow** at 2019 Ontario Shows  
Based on lifetime records

### MAPLEHURST JAGUAR LUCY

Grand Champion National Show 2019

14224M 632F 467P BCA 225M 196F 206P

Ken D Forster, Lynden, ON

Ontario Guernsey Association Award for highest Butterfat Production (kg)

### EBY MANOR GRUMPY JANEY (VG-87)

3-3 11548M **603F** 5.2% 398P 3.5% BCA 340M 355F 329P

Eby Manor Ltd, Waterloo, ON

Ontario Guernsey Association Award for highest Protein Production (kg)

### EBY MANOR YOGI KATE (VG-86)

3-11 10926M 576F 5.3% **405P** 3.7% BCA 303M 316F 316P

Eby Manor Ltd., Waterloo, ON

Ontario Guernsey Association Award for the cow with the Highest BCA

Milk + Fat + Protein

### EBY MANOR GRUMPY JANEY (VG-87)

3-3 11548M 603F 5.2% 398P 3.5% BCA 340M 355F 329P

**Total Fat + Protein BCA: 684**

Eby Manor Ltd., Waterloo, ON

# CANADIAN CLASS LEADERS

Based on Breed Class Average January - December 2019 Records

## BUTTERFAT

### Yearling

**LINDRIAN POLLIE LEVI ET (VG-85)**

7307 361 263 BCA: 276M **273F** 280P  
John & Linda Tamis, Surrey, BC

### Two Year Old

**CALLUMLEA LEGEND FLORA (GP-83)**

9633 435 347 BCA: 342M **306F** 347P  
Kenneth McNabb, New Hamburg, ON

### Three Year Old

**EBY MANOR GRUMPY JANEY (VG-87)**

11548 603 398 BCA: 340M **355F** 329P  
Eby Manor Ltd, Waterloo, ON

### Four Year Old

**CALLUMLEA TURLEY DAPHINE (GP-82)**

9975 565 396 BCA: 302M **338F** 336P  
Kenneth McNabb, New Hamburg, ON

### Five Year Old

**LINDRIAN POLITE (GP-83)**

14709 737 460 BCA: 394M **396F** 346P  
John & Linda Tamis, Surrey, BC

### Mature Cow

**EBY MANOR IVAN SARAH (GP-83)**

8957 522 305 BCA: 230M **273F** 221P  
Eby Manor Ltd, Waterloo, ON

## PROTEIN

### Yearling

**EBY MANOR CIMERON KAYLA (GP-82)**

7898 382 290 BCA: 274M **267F** 284P  
Eby Manor Ltd, Waterloo, ON

### Two Year Old

**CALLUMLEA LEGEND FLORA (GP-83)**

9633 435 347 BCA: 342M 306F 347P  
Kenneth McNabb, New Hamburg, ON

### Three Year Old

**EBY MANOR GRUMPY JANEY (VG-87)**

11548 603 398 BCA: 340M 355F 329P  
Eby Manor Ltd, Waterloo, ON

### Four Year Old

**CALLUMLEA TURLEY DAPHINE (GP-82)**

9975 565 396 BCA: 302M 338F 336P  
Kenneth McNabb, New Hamburg, ON

### Five Year Old

**LINDRIAN POLITE (GP-83)**

14709 737 460 BCA: 394M **396F** 346P  
John & Linda Tamis, Surrey, BC

### Mature Cow

**BEAVERWOOD NACHO'S ISABELLA**8213

11550 445 369 BCA: 306M 237F 275P  
Beaverwood Farms Inc., Dundas, NB

## GUERNSEYS WHO HAVE PRODUCED 80 TONNES LIFETIME

		#LAC	MILK	FAT	PROT	OWNER	PROV
REDNGOLD COLUMBUS DAWN	VG	11	114824	5429	4283	ALAN SPENCE	ON
EBY MANOR JORDAN DEKOTA	GP	13	107818	5467	3859	EBY MANOR LTD	ON
LINDRIAN MAGICMAN POPPY	GP	7	102609	4685	3681	JOHN & LINDA TAMIS	BC
MAPLEHURST KINGS LILIAN	EX	10	90845	3965	3051	ROBERT FORSTER	ON
MAPLEHURST BEST SATINA	VG2	8	86583	3367	2622	KEN D FORSTER	ON
BEAVERWOOD MARION 2		13	84827	3658	3029	GARY WEST	NB
MAPLEHURST WARDEN BIANCA	VG	5	84347	3804	3023	KEN D FORSTER	ON
BIG SPRING DECISION WANDA	VG	9	82509	3956	2857	EBY MANOR LTD	ON
MAPLEHURST FALCON CANARY	GP	6	81997	3374	2930	PETER NOOYEN	ON
LINDRIAN PATSY LAMAR 27	GP	8	81746	3692	2658	JOHN & LINDA TAMIS	BC
LINDRIAN PIZZAZ	VG	7	81210	3473	2739	JOHN & LINDA TAMIS	BC
BROWN EDEN FAYVOR GEM	VG2	8	81187	3593	2757	BROWN EDEN FARMS	ON
MAPLEHURST FAYETTE MARSHA	EX	9	81102	4076	3013	ALAN SPENCE	ON

# SUPERIOR PRODUCTION AWARDS

Based on 2019 Production Records

## **Butterfat + 475 kg**

### **LINDRIAN POLITE (GP-83)**

5 Yr 14709 737 5.0% 460 3.1%  
BCA 394M **396F** 346P  
John & Linda Tamis, Surrey, BC

### **EBY MANOR GRUMPY JANEY (VG-87)**

3 Yr 11548 603 5.2% 398 3.5%  
BCA 340M **355F** 329P  
Eby Manor Ltd., Waterloo, ON

### **CALLUMLEA TURLEY DAPHINE (GP-82)**

4 Yr 9975 565 5.7% 396 4.0%  
BCA 302M **338F** 336P  
Kenneth McNabb, New Hamburg, ON

### **EBY MANOR JACKSON IMPRINT (GP-80)**

4 Yr 9998 582 5.8% 347 3.5%  
BCA 277M **322F** 271P  
Eby Manor Ltd., Waterloo, ON

### **MATT-AMIA TROMBONE BONNIE-SUE (EX-90)**

12 Yr 9731 489 5.0% 353 3.6%  
BCA 299M **319F** 304P  
Cardinal Creek Holsteins, Port Elgin, ON

### **EBY MANOR YOGI KATE (VG-86)**

3 Yr 10926 576 5.3% 405 3.7%  
BCA 303M **316F** 316P  
Eby Manor Ltd., Waterloo, ON

### **EBY MANOR D LINDY (EX-92)**

5 Yr 10095 565 5.6% 367 3.6%  
BCA 272M **302F** 278P  
Eby Manor Ltd., Waterloo, ON

### **EBY MANOR GEO SAPPHIRE (VG-85)**

5 Yr 11088 508 4.6% 375 3.4%  
BCA 327M **297F** 310P  
Eby Manor Ltd., Waterloo, ON

### **EBY MANOR JACKSON FEBRUARY (VG-87)**

3 Yr 10771 475 4.4% 350 3.2%  
BCA 336M **293F** 307P  
Eby Manor Ltd., Waterloo, ON

### **BEAVERWOOD SPRUCE'S FERN (-)**

5 Yr 11689 519 4.4% 382 3.3%  
BCA 316M **281F** 289P  
Beaverwood Farms Inc., Dundas, NB

### **EBY MANOR IVAN SARAH (GP-83)**

6 Yr 8957 522 5.8% 305 3.4%  
BCA 230M **273F** 221P  
Eby Manor Ltd., Waterloo, ON

### **EBY MANOR GARY SASHA (-)**

3 Yr 10883 478 4.4% 375 3.5%  
BCA 308M **269F** 298P  
Eby Manor Ltd., Waterloo, ON

### **BEAVERWOOD CRUNCH'S HARPER (-)**

7 Yr 9487 502 5.3% 347 3.7%  
BCA 245M **263F** 251P  
Beaverwood Farms Inc., Dundas, NB

### **EBY MANOR VANCE PETRINA (VG-87)**

5 Yr 9729 496 5.1% 347 3.6%  
BCA 253M **260F** 253P  
Eby Manor Ltd., Waterloo, ON

## **Protein + 370 kg**

### **LINDRIAN POLITE (GP-83)**

5 Yr 14709 737 5.0% 460 3.1%  
BCA 394M 396F **346P**  
John & Linda Tamis, Surrey, BC

### **CALLUMLEA TURLEY DAPHINE (GP-82)**

4 Yr 9975 565 5.7% 396 4.0%  
BCA 302M 338F **336P**  
Kenneth McNabb, New Hamburg, ON

### **EBY MANOR GRUMPY JANEY (VG-87)**

3 Yr 11548 603 5.2% 398 3.5%  
BCA 340M 355F **329P**  
Eby Manor Ltd., Waterloo, ON

### **EBY MANOR YOGI KATE (VG-86)**

3 Yr 10926 576 5.3% 405 3.7%  
BCA 303M 316F **316P**  
Eby Manor Ltd., Waterloo, ON

### **EBY MANOR GEO SAPPHIRE (VG-85)**

5 Yr 11088 508 4.6% 375 3.4%  
BCA 327M 297F **310P**  
Eby Manor Ltd., Waterloo, ON

### **EBY MANOR WARD BELLA (VG-86)**

5 Yr 11982 469 3.9% 388 3.2%  
BCA 335M 259F **306P**  
Eby Manor Ltd., Waterloo, ON

### **BEAVERWOOD SPRUCE'S FERN (-)**

5 Yr 11689 519 4.4% 382 3.3%  
BCA 316M 281F **289P**  
Beaverwood Farms Inc., Dundas, NB

### **EBY MANOR GARY SASHA (-)**

3 Yr 10883 478 4.4% 375 3.5%  
BCA 308M 269F **298P**  
Eby Manor Ltd., Waterloo, ON

### **BIG SPRING LEWIS JAMACIA (VG-87)**

7 Yr 12301 470 3.8% 372 3.0%  
BCA 318M 251F **270P**  
Excelsior Farms Inc, Wyoming, ON

## **Honour Roll Additions Butterfat**

### **Sr Two Year Old ~ 6th**

#### **LINDRIAN BAMBOO LEGEND**

9655 **433** 4.5%  
John & Linda Tamis, Surrey, BC

### **Jr 3 Yr Old ~ 4th**

#### **EBY MANOR GRUMPY JANEY**

11548 **603** 5.2%  
Eby Manor Ltd., Waterloo, ON

### **Sr Three Year Old ~ 1st**

#### **EBY MANOR YOGI KATE**

10926 **576** 5.3%  
Eby Manor Ltd., Waterloo, ON

### **Four Year Old ~ 3rd**

#### **EBY MANOR JACKSON IMPRINT**

9998 **582** 5.8%  
Eby Manor Ltd., Waterloo, ON

### **Four Year Old ~ 5th**

#### **CALLUMLEA TURLEY DAPHINE**

9975 **565** 5.7%  
Kenneth McNabb, New Hamburg, ON

### **Five Year Old ~ 2nd**

#### **LINDRIAN POLITE**

14709 **737** 5.0%  
John & Linda Tamis, Surrey, BC

**Continued from page 14...**

is evident, texture is soft and silky on the udders and the animals all move on functional feet and legs, with locomotion being a self-selecting trait in the free stall operation. We see a wide mix of sires being used, and multiple daughters standing out – Copper & Cordell frequently being in the mix. The cows have multiple lactations behind them, and the average calving interval is 12.8 months. The cows are eating a superfine TMR, and the wide muzzles are ensuring there's plenty of dry matter going in to produce quality golden Guernsey milk. The animals are relatively settled given they have been in the facility for less than a week.

Hoard's have started to make their own cheese, and are looking at processing their own milk – however they have a good relationship with their current creamery, and receive a premium for the Guernsey milk based on cheese yield, allowing them to test the market with the cheese, and continue to focus on the farm operation.

The heifers are kept offsite at a different facility that isn't as close to town as the home farm – we see some higher pedigreed heifers that are currently in the hutches – well grown, vigorous young calves by Prince Charming are standouts. We enjoy dinner courtesy of Hoard's Dairyman, which is greatly appreciated.

*...to be continued in the August 2020 Newsletter*

## SUPERIOR PRODUCTION AWARDS CONTINUED

**Five Year Old ~ 5th**

**EBY MANOR D L INDY**

10095 **565** 5.6%

Eby Manor Ltd., Waterloo, ON

**Aged Cow ~ 2nd**

**MATT-AMIA TROMBONE**

**BONNIE-SUE**

9731 **489** 5.0%

Cardinal Creek Holsteins, Port Elgin, ON

**Honour Roll Additions  
Protein**

**Jr Two Year Old ~ 4th**

**CALLUMLEA LEGEND FLORA**

9633 **347** 3.6%

Kenneth McNabb, New Hamburg, ON

**Sr Two Year Old ~ 9th**

**LINDRIAN BAMBOO LEGEND**

9655 **338** 3.5%

John & Linda Tamis, Surrey, BC

**Jr Three Year Old ~ 5th**

**EBY MANOR GRUMPY JANEY**

11548 **398** 3.5%

Eby Manor Ltd., Waterloo, ON

**Sr Three Year Old ~ 1st**

**EBY MANOR YOGI KATE**

10926 **405** 3.7%

John & Linda Tamis, Surrey, BC

**Sr Three Year Old ~ 6th**

**EBY MANOR GARY SASHA**

10883 **375** 3.5%

Eby Manor Ltd., Waterloo, ON

**Five Year Old ~ 1st**

**LINDRIAN POLITE**

14709 **460** 3.1%

John & Linda Tamis, Surrey, BC

**Five Year Old ~ 10th**

**EBY MANOR WARD BELLA**

11982 **388** 3.2%

Eby Manor Ltd., Waterloo, ON

**Aged Cow ~ 2nd**

**MATT-AMIA TROMBONE**

**BONNIE-SUE**

9731 **353** 3.6%

Cardinal Creek Holsteins,  
Port Elgin, ON

## NATIONAL GUERNSEY SHOW 2019 SPONSORS

*We wish to extend our appreciation to all the sponsors that helped to make the  
2019 Canadian National Guernsey Show a success!*

BROADVIEW FARMS  
WENTWORTH NIAGARA  
GUERNSEY CLUB  
YANTZI'S FEED & SEED  
UPPER CANADA CHEESE COMPANY  
EASTGEN  
ELDALE VETERINARY CLINIC  
EBY MANOR FARMS INC.

CONESTOGO AGRI SYSTEMS INC.  
METRO HIGHLAND CLUB  
GENEX CANADA  
KEN D. FORSTER  
DUNDAS ANIMAL HOSPITAL  
W-S FEED & SUPPLIES LTD.  
FLORADALE FEED MILL LTD  
RKD WEB STUDIOS

SELECT SIRES GENERATIONS  
QUALITY SEEDS LTD.  
CALLUMLEA FARMS  
BRUCE & SHERRY TELFER  
AYR FARMERS MUTUAL INS. CO  
LACTANET



Frank Robinson

MAPLEHURST JAGUAR

*Lucy*

VG-86

03-01 305 7138M 311F 4.4 232P 3.2 (222-191-204)

Awarded Ontario Grand Champion Cow with highest lifetime records.

Following our last classification, our herd is now home to 20 EX cows.  
Check out pictures from the Breeder's Cup Competition!

*Maplehurst Farm*

Ken & Chris Forster & Family / Rob & Jocelyn Forster  
278 Hwy 52, Lynden, Ontario L0R 1T0  
Phone: 905-304-0131 Email: [holycow1952@live.ca](mailto:holycow1952@live.ca)  
[www.facebook.com/MaplehurstFarms/](http://www.facebook.com/MaplehurstFarms/)

# CLASSIFICATIONS


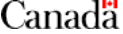
(January - March 2020)

---

GUCANF11356219	MAPLEHURST PRADAS WHISK	EX	94	3E	KEN D FORSTER	ON
GUCANF11356248	MAPLEHURST LEGEND GLADYS	EX	92	2E	KEN D FORSTER	ON
GUCANF11356202	MAPLEHURST LYNNDHELLS ROSA	EX	91	4E	KEN D FORSTER	ON
GUCANF11356238	MAPLEHURST MENTOR FELICIA	EX	91	3E	KEN D FORSTER	ON
GUCANF11356212	MAPLEHURST PHOENIX FEATHERS	EX	90	3E	KEN D FORSTER	ON
GU840F3012469104	WEE KIN FARM YOGI SAFFRON	EX	90	2E	BETSY MCKENNA	NY
GUCANF12292442	MAPLEHURST LEGENDS LEGACY	EX	90	1E	KEN D FORSTER	ON
GUCANF11902310	COMFORT FARMS DIAMOND	EX	90	1E	LEWIS LAND AND STOCK	ON
GUCANF12292440	MAPLEHURST PILOT KAYLEE	EX	90	1E	KEN D FORSTER	ON
GUCANF12292432	MAPLEHURST GEO LADDIE	EX	90	1E	KEN D FORSTER	ON
GUCANF12292439	MAPLEHURST GEO GRETCHEN	VG	88		KEN D FORSTER	ON
GUCANF12292446	MAPLEHURST LEGEND NELLIE	VG	88		KEN D FORSTER	ON
GUCANF12292469	MAPLEHURST PILOT SAFFIRE	VG	87		KEN D FORSTER	ON
GUCANF12292448	MAPLEHURST JAGUAR LAVERNE	VG	87		ROBERT FORSTER	ON
GUCANF11788450	REDNGOLD LEGEND CONSTELLATION	VG	87		ALAN SPENCE	ON
GUCANF12292456	MAPLEHURST TOBY PANDORA	VG	87		KEN D FORSTER	ON
GUCANF12292464	MAPLEHURST PILOT TREAT	VG	87		KEN D FORSTER	ON
GUCANF11902338	COMFORT FARMS MELANIA	VG	86		COMFORT FARMS LTD	ON
GUCANF11902335	COMFORT FARMS MAGGIE	VG	85		COMFORT FARMS LTD	ON
GUCANF12292466	MAPLEHURST LEOPOLD LILA	VG	85		KEN D FORSTER	ON
GUCANF12292474	MAPLEHURST NAVARRO LOTTERY	VG	85		ROBERT FORSTER	ON
GUCANF12725334	WARRINDALE REINDEER PILOT	VG	85		LILLIES HOLSTEINS (SAMUEL	ON
GUCANF12677196	LINDRIAN PAYA LATIMER	VG2	86		JOHN & LINDA TAMIS	BC
GUCANF12292497	MAPLEHURST ALANN LADEN	VG2	86		KEN D FORSTER	ON
GUCANF11902351	COMFORT FARMS LYNSEY	VG2	86		COMFORT FARMS LTD	ON
GUCANF12292503	MAPLEHURST NAVARO WILMA	VG2	85		KEN D FORSTER	ON
GUCANF11902350	COMFORT FARMS PRELUDE	VG2	85		COMFORT FARMS LTD	ON
GUCANF11902347	COMFORT FARMS DYNA	GP	84		COMFORT FARMS LTD	ON
GUCANF12292491	MAPLEHURST ERNIE FEATURE	GP	83		KEN D FORSTER	ON
GUCANF12677203	LINDRIAN PATIMER LATIMER	GP	83		JOHN & LINDA TAMIS	BC
GUCANF12292495	MAPLEHURST LIGHTNING LIZZIE	GP	83		KEN D FORSTER	ON
GUCANF110734597	CHARLUSON CORDELL ERIKA	GP	82		FERME CHARLUSON INC.	QC
GUCANF11788459	REDNGOLD KAKADU EUCALYPTUS	GP	82		ALAN SPENCE	ON
GUCANF109789169	SEROL LIBIDO EDNA	GP	82		LES CORNES MUSES INC	QC
GUCANF12615118	DON HAVEN KAKADU VELMA	GP	82		SCOTT GORDON	ON
GUCANF12677206	LINDRIAN DUNGOEN NEWTON	GP	81		JOHN & LINDA TAMIS	BC
GUCANF11902317	COMFORT FARMS JENINE	GP	81		COMFORT FARMS LTD	ON
GUCANF11902357	COMFORT FARMS MICHELLE	GP	81		COMFORT FARMS LTD	ON
GUCANF11902355	COMFORT FARMS ANASTASIA	GP	81		COMFORT FARMS LTD	ON
GUCANF11902352	COMFORT FARMS LEIGH ANNE	GP	80		COMFORT FARMS LTD	ON



GUCANF11902359	COMFORT FARMS PHOENIX	GP	80	COMFORT FARMS LTD	ON
GUCANF11902356	COMFORT FARMS ADELINE	G	78	COMFORT FARMS LTD	ON
GUCANF11902358	COMFORT FARMS GLENYS	G	78	COMFORT FARMS LTD	ON
GUCANF12936093	COMFORT FARMS MELANIE LYNN	G	77	COMFORT FARMS LTD	ON
GUCANF11788460	REDNGOLD LEOPOLD'S ENGLAND	G	77	ALAN SPENCE	ON
GUCANF12936096	COMFORT FARMS ALINA	G	77	COMFORT FARMS LTD	ON
GUCANF11902353	COMFORT FARMS SHYLA	G	76	COMFORT FARMS LTD	ON
GUCANF11902334	COMFORT FARMS AVITA	G	74	COMFORT FARMS LTD	ON


 Government of Canada / Gouvernement du Canada
 

**Average Production by Breed based on Official - Supervised Records in Canada**  
**2010 - 2019**  
**GUERNSEY**

	Number of Records	Milk	Fat		Protein		BCA		
		kg	kg	%	kg	%	Milk	Fat	Protein
2019	278	7,276	344	4.74	255	3.51	219	206	216
2018	295	7,273	340	5.00	251	3.00	220	206	213
2017	317	7,389	351	4.77	254	3.46	222	210	214
2016	351	7,086	331	4.69	241	3.42	214	199	205
2015	384	6,730	313	4.67	228	3.40	203	189	194
2014	370	6,759	315	4.69	231	3.43	205	191	197
2013	375	6,952	322	4.64	239	3.45	211	195	204
2012	374	6,831	313	4.60	234	3.44	207	190	200
2011	371	7,062	322	4.57	241	3.42	216	196	207
2010	357	6,891	310	4.51	235	3.43	208	187	200

**LACTANET CANADA**

April/Avril 2020 **TOP 5 GUERNSEY HERDS BY LPI / 5 MEILLEURS TROUPEAUX GUERNSEY SELON L'IPV**  
(minimum 10 active cows with official LPI) / (minimum de 10 vaches actives avec un IPV officiel)

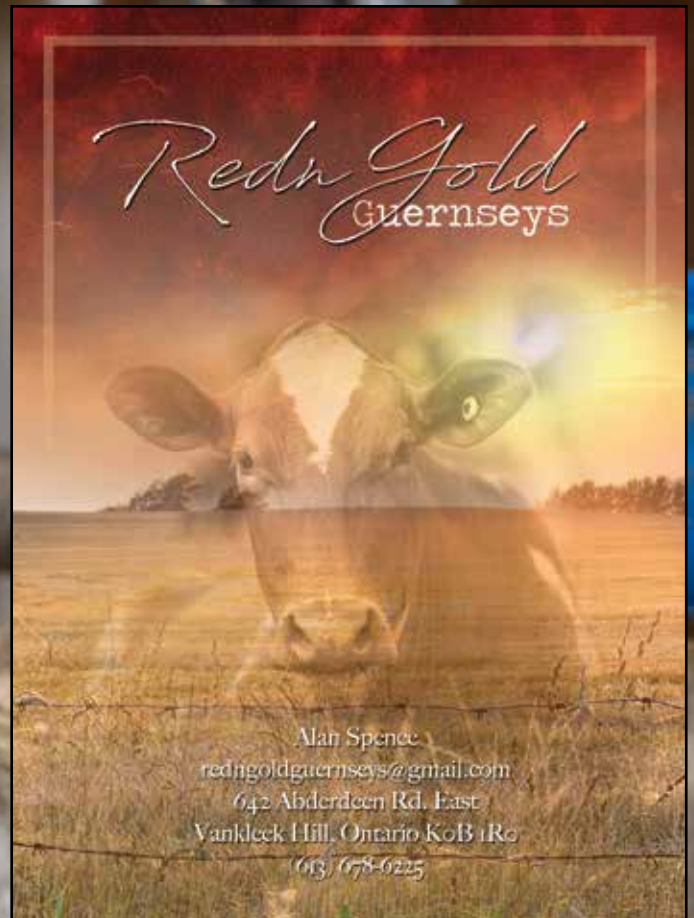
Rank Rang	LPI IPV	No. Cows No. Vaches	Name of Farm / Owner Nom de la Ferme / Propriétaire	City Ville	Province	Milk Lait	Fat Gras	Protein Protéine	Fat % % Gras	Prot % % Prot	SCS CCS	CONF	MS SM	F&L P&M	DS PL	RP Cr
1	1080	13	LINDRIAN FARMS	SURREY	BC	189	12	10	0.06	0.04	103.4	5.5	5.5	2.4	1.8	0.8
2	1031	11	FERME IMPERIALE	NOYAN	QC	336	11	12	-0.06	0.01	101.9	2.3	2.8	1.0	-0.4	-0.3
3	931	60	EBY MANOR FARM LTD.	WATERLOO	ON	187	8	7	0.01	0.00	99.9	2.7	2.7	2.1	0.8	0.7
4	846	51	COMFORT FARMS	ST ANNS	ON	-123	-3	-2	0.03	0.03	104.8	2.9	2.5	2.0	0.8	0.1
5	822	61	MAPLEHURST FARMS	LYNDEN	ON	-38	0	1	0.03	0.03	101.3	2.6	2.5	1.3	0.5	1.4

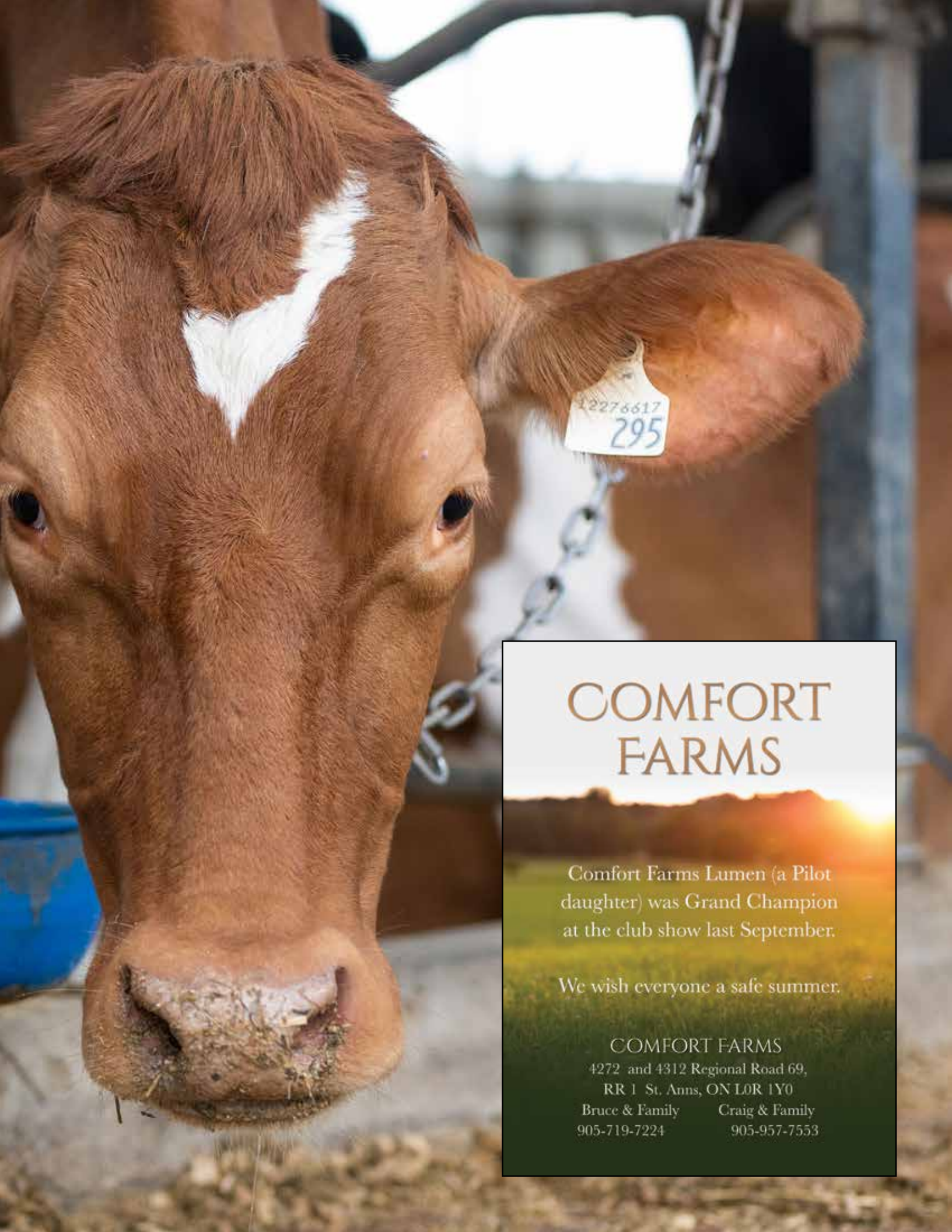
# FEE SCHEDULE

MARCH 25, 2020

---

<b>Membership:</b>	<b>Fee</b>
Annual	\$85.00
<b>Registration:</b>	
0 to 3 months	\$15.00
3 to 6 months	\$18.00
6 to 12 months	\$40.00
12 to 24 months	\$50.00
24 months and over	\$60.00
Females 50% Purity or Less	\$11.00
Additional fee for non-members (No Extra Fee for <50% Animals)	\$25.00
Registration of Imported Animal	\$26.00
<b>Transfer:</b>	
Transfer of Ownership	\$25.00
Bulk Transfer (15+ animals)	\$10.00
Transfer within Family	\$10.00
Whole Herd Transfer within Family	\$250.00
<b>Embryo Registry Work:</b>	
Recovery	\$10.00
Freezing	\$5.00
Transfer (export only)	\$50.00
<b>Other Fees:</b>	
Duplicate Certificate	\$17.00
Registration of Lease	\$22.00
Registration of Prefix	\$22.00
Transfer of Prefix	\$22.00
Registration of Tattoo Letters	\$22.00
Transfer of Tattoo Letters	\$22.00
Extended Pedigree - 3 gen	\$20.00
Extended Pedigree - 4 gen	\$25.00





# COMFORT FARMS

Comfort Farms Lumen (a Pilot daughter) was Grand Champion at the club show last September.

We wish everyone a safe summer.

## COMFORT FARMS

4272 and 4312 Regional Road 69,  
RR 1 St. Anns, ON L0R 1Y0

Bruce & Family  
905-719-7224

Craig & Family  
905-957-7553

# #2 GPA LPI SIRE AND A2A2



Dam of Indigo: EBV MANOR D L INDY EX-92-CAN, #1 Cow for GLPI at +1589, #2 Cow for GEBV Fat at +59  
4 Lactations: 39,389M 2370F 6.0% 1491P 3.8% kg Photo: Frank Robinson

## EBV MANOR INDIGO

0200GU00122 LIGHTNING x DOUBLE L



- |                               |                           |
|-------------------------------|---------------------------|
| <b>+1191</b> GPA LPI          | <b>+103</b> MILKING SPEED |
| <b>+102</b> HERD LIFE         | <b>+5</b> CONFORMATION    |
| <b>102</b> SOMATIC CELL SCORE | <b>+8</b> MAMMARY SYSTEM  |

Source: CDN GPA 20\*APR

**SEMEX**  
Genetics for Life®

[www.semex.com](http://www.semex.com)

**WestGen**

[www.westgen.com](http://www.westgen.com)

**EastGen**

[www.eastgen.ca](http://www.eastgen.ca)

**ciaq**

[www.ciaq.com](http://www.ciaq.com)