

Canadian  
Guernsey



# GUERNSEY JOURNAL

2019 EDITION



# CANADIAN GUERNSEY JOURNAL

ISSN 0831-3008  
Canada Post subsidy #1364

**VOL. XCII NO. 1**

Devoted to the Advancement of the Guernsey Breed  
Published yearly by the Canadian Guernsey Association  
Advertising Rates Available upon Request  
Canadian Guernsey Journal Magazine  
Design by Holly McFarlane

## CANADIAN GUERNSEY ASSOCIATION

### HEAD OFFICE

7660 Mill Road, Guelph, ON, N1H 6J1  
Phone: 519-836-2141, Fax: 519-763-6582  
Email: info@guernseycanada.ca  
www.guernseycanada.ca  
Second Class Mail Registration #40007699  
Subsidy # 1364

### OFFICERS & DIRECTORS

**PRESIDENT** Morris Bartlett, Caledonia, ON

**VICE-PRESIDENT** Jim Eby, Waterloo, ON

**FIELDMAN** Russell Gammon, Fergus, ON

**ADMINISTRATOR** Jessie Weir  
7660 Mill Road, Guelph, ON

### DIRECTORS

Ken Forster, Lynden, ON

Rob Forster, Lynden, ON

Scott Gordon, Rockwood, ON

Paul MacLeod, Embro, ON

Paul Noble, Moorefield, ON

Alan Spence, Vankleek Hill, ON

John Tamis, Surrey, BC

### ONTARIO DIRECTORS

**PRESIDENT** Colin Comfort, St. Anns, ON

**VICE-PRESIDENT** Paul Noble, Moorefield, ON

### DIRECTORS

Morris Bartlett, Caledonia, ON

Jocelyn Forster, Lynden, ON

Scott Gordon, Rockwood, ON

Subscription cost ~ \$15.00 Cdn annually  
(plus HST for Canadian Subscribers)

Cover photo submitted by Days Like This Photography



## **2019 Table of Contents**

2019 National Guernsey Show Information	2
President's Address	3
Board of Directors	3
Farm Profile: Rudundancy Fuels Passion for Career	4
Fieldman Reflections	6-7
Canadian National Guernsey Show 2018 Results	8-12
Canadian National Guernsey Show Sponsors	12
CDN Genetic Evaluation Highlights - April 2019	13
Gold Star Breeder Award	13
Production Records	14-15
Canadian Guernsey Annual Awards	17
Guernsey Ontario Annual Awards	17
Canadian Class Leaders	18
80 Tonne Cows	18
Superior Production Awards	19
Classifications	20
Average Production by Breed	21
CDN Top 5 Guernsey Herds by LPI	21
Golden Opportunities - South of the Border	24
2019 Fee Schedule	26
Wentworth-Niagara Guernsey Club Picnic	27

## **Advertiser's Index**

Comfort Farm	7
Bydand Farm	16
Eby Manor Farms Inc.	22
Semex	23
Maplehurst Farm	25
RednGold Guernseys	27
Semex	Back Cover

2019 NATIONAL GUERNSEY SHOW  
FRIDAY, SEPTEMBER 20, 2019 10:00 A.M.  
ANCASTER FAIRGROUNDS, ANCASTER, ON



# PRESIDENT'S ADDRESS

---

It's hard to believe that we are in May already, it seems like the year 2019 just started.

Well it looks like another late planting season with all the rain that Mother Nature keeps sending our way. One day soon it will turn hot and dry and we will be doing haying and planting all at once.

2019 marks change for our Guernsey Association, Rob Forster resigned as our Fieldman after ten years, thank you for all your hard work. But as luck would have it we are able to welcome Russell Gammon as our new Fieldman. Russell needs no introduction to the dairy industry with his enthusiasm and excitement I am sure the Golden Girls will be in good hands. I would like to welcome Paul MacLeod to our board of directors.

Remember our demand for our Golden Guernsey's has never been better. Come and support our championship show in September at Ancaster Fair by showing your finest Golden girls or in person just to watch.

The Wentworth Niagara Guernsey picnic is July 20th, at 12 noon, potluck salads and desserts, held at Comfort Farms. Everyone welcome, games for all ages and breeders cup results.

Milk and love our Golden Girls, we will see you on the Golden Trail along the way.

Morris Bartlett

## CANADIAN & ONTARIO GUERNSEY ASSOCIATION BOARD OF DIRECTORS



Standing (L to R): Rob Forster, Jim Eby (CAN Vice-President), Colin Comfort (ON President), Paul Noble (ON Vice-President), Scott Gordon, Paul MacLeod  
Sitting (L to R): Morris Bartlett (CAN President), Jocelyn Forster, Ken Forster, Jessie Weir  
Absent: Alan Spence, John Tamis

# FARM PROFILE

## REDUNDANCY FUELS PASSION FOR CAREER

Source: Farmers Guardian, UK



Redundancy created the opportunity for Jason and Katharine Salisbury to follow their farming dream. Clemmie Gleeson met the couple who are finding success through diversifying into cheese.

Being made redundant from his job as a herdsman prompted Jason Salisbury to make some brave decisions. Friends advised him to retrain for a new career, but Jason was determined to set up a dairy herd and cheesemaking business with wife Katharine.

He had been working as herdsman for Lord and Lady de Saumarez, then of the Shrubland estate in Suffolk, managing their Holstein Friesians, while Katharine was employed locally as a vet. But in April 2004, the devastating news came that the herd was to be dispersed. "The dairy needed investment and the choice was should they invest or get rid of the herd. They decided to do the latter," says Jason.

"Katharine was on maternity leave at the time. We had a two-year-old daughter and two-month-old son and we lived in tied accommodation. "We had no savings and were very much living day-to-day."

The timing could not have been worse to be out of work, but the couple resolved to turn the potential disaster into an opportunity and asked to rent the buildings that the black and white herd were vacating.

### BUILDING

Within a few months, they had also completed a basic cheesemaking course at Reaseheath College in Cheshire

and sourced cheesemaking equipment. Next on the list was to purchase some cows and they decided on the Guernsey because of the high butterfat and protein contents, a decision that has been key to their long-term success. "We wanted to make something a bit different," says Katharine.

"No-one locally had Guernseys and it would not have been possible without the uniqueness of the cow." It has, however, proven tricky to source new blood with no local herds and the couple's resolve not to source stock from high-risk TB areas. Katherine says: "Being a vet, I am keen to maintain a high health status and keep the herd as closed as possible."



By October 2004, everything was in place for their new business. "We were in milk production and started trying to make cheese using the recipe from the course," says Jason. "But that was for hard cheese and it didn't work with our high protein milk."

While some people questioned what they were doing, the Salisburys remained positive. "A lot of people said 'why are you doing this?' but farming is all I know and that was the soft option for me, although it was not the soft option for us as a family," admits Jason. Katharine no longer works as a vet, but maintains her registration to take care of the herd's health, as well as being a full-time cheesemaker.

### SELLING

After much trial and error, they discovered they could make a soft cheese very successfully and, before long, were

producing enough to sell at farmers' markets both locally and in London. "Katharine would drop me off at one market and go and sell at another before coming back to collect me at the end of the day," says Jason. "We'd pack up and travel home and start all over again the following day. It was exhausting."

After a few months they started taking orders from wholesalers and could reduce the number of markets they attended. Now they just sell at important markets including large Christmas events when they see a peak in sales, particularly the blue cheese. Initially, Jason and Katharine had a 10-year plan which included buying their own farm, but their plans quickly changed. "Three years in, it was announced the whole estate was to be sold," says Jason.



They had the security of the five-year minimum term on their farm business agreement, but the couple started looking in earnest for a farm to buy. They went to view a property on Guernsey which they were seriously considering but, on their return to Suffolk, they heard that Whitegate Farm, just 2.5 miles from their rented farm, was for sale. With 40 hectares (100 acres), a selection of farm buildings and a house, it was ideal. The purchase was completed in August 2007 but it took nearly two years to turn it into a working dairy farm. "It's a beautiful Grade 2 listed house, but it wasn't our priority," says Katharine. "The bank, however, said we had to fix it as a condition of the mortgage."

## INVESTMENT

They invested in a second-hand parlour, removed some ramshackle buildings and repaired others. "We couldn't move the cows until we had everything ready, including the cheesemaking facilities and it all had to happen together," says Jason. The cows moved to Whitegate Farm in June 2009, just a week after exhibiting at the Suffolk Show and 10 days before the gates were opened for their first Open Farm Sunday.

The next few years were spent settling in and establishing where the business was going. Jason says: "We needed to work out if we could do all that we needed to do." They put up a sign at the end of the farm drive on the busy A140, inviting visitors to buy milk and cheese and started selling from a painted garden shed and an honesty box.

Additions over the next few years included a small herd of rare breed pigs fed on the whey – a waste product from the cheesemaking process – and they added a small shop on the farm.

In 2011, inspired by seeing one in action on a rare family holiday, they imported a milk vending machine from Switzerland. This meant they could conveniently sell milk to the public. Now, the vending machine is accessible from 7am to 9pm seven days a week and, as well as milk, customers can buy cheese and eggs from the machine, too.

By summer 2017, the parlour needed expensive updates, but a visiting engineer suggested they consider a milking robot instead. "We were milking 30 cows and I couldn't justify the salary of hiring a herdsman," says Jason. "Instead, the Delaval VMS Spectra will be paid off within 10 years and will more than pay for itself." Within three days the cows were getting used to it, but it took about 18 months to fully get to grips with the system."

## EXPANSION

One major positive is that he knows the cows better from the different way of working and from the wealth of data provided by the robot. "In November 2017, we were approached by local farmers, Glynn and Debbie Thomas," says Jason. "They wanted to retire and asked if we would take on their Jersey cows. Expansion was not in our sights, our 30 cows provided us with enough milk."

The herd was then producing 450 litres per day which was the ideal quantity for the cheese business. "But we were open minded," says Katharine. "We went to see them and didn't have the heart to walk away. Their ethos was the same as ours and it was a really established herd, so it would have been so sad for it to be split up."

They bought about 25 Jerseys which took the milking herd up to the maximum 50 that the robot can manage. The additional milk (around 300 litres per day) is sold to local farmer-owned dairy, Marybelle, so they now have a milk collection once a week.

There have also been a few other purchases along the way, including a handful of Ayrshires and one Montbeliarde bought as a show cow for daughter Emily.

As well as dairy AI, they use a Hereford bull to produce some cross-breed calves. All bull calves are reared to nine months of age for rose veal, and they have managed to generate a market for their veal

**Continued on page 7**



# FIELDMAN REFLECTIONS

---

*Russell Gammon, Canadian Guernsey Fieldman*

If someone can tell me where the month of April 2019 has gone I will gladly accept any reasonable explanation!

I write this message on April 29th, having watched in shock as snow fell here in Fergus this afternoon!

What a great joy it has been to dive into this new role! The best surprise of all has been: How much interaction there has been with both owners of established herds and those who are interested in becoming Guernsey owners. Not a day goes by without some motivating Guernsey activity!

Here's a summary of highlights:

-GROWTH is taking place in the number of quality Guernsey females in Canada! Recently the registry team at Holstein Canada have processed registration of over 20 American females into the Canadian herdbook!

These animals are owned in three "new to Guernsey" herds one on Vancouver Island in BC; one in the interior of BC, in the Okanagan Valley, and one is in Western Quebec! It is great to see Guernseys returning to these areas! #GROWTH!

The best news is that more top-quality animals are headed to the new herd in Quebec from two different parts of the USA! #BOOM

During April Guernsey products went on the market in Quebec-courtesy of some of those imported Guernseys owned by Christian and Marie-Pier Kaiser and family of Ferme Imperiale Inc. at Noyan, Quebec! #MEGABOOM



In addition Christian Kaiser (pictured below, left) was on a panel sponsored by Trouw Nutrition/Shur-Gain discussing business diversification at Canadian Dairy Xpo in early April in Stratford, Ontario! What a gift it was to meet them briefly! They were able to connect with other Guernsey supporters! #ANOTHERBIGBOOM!

What a great delight it was to take part in the Ontario Breeder's Cup On Farm Competition with Judge Kerry Alexander on Saturday, April 27th! This year we had 18 animals entered from six herds. While April 27th was a cold, blustery day the welcome we received from all herd owners was wonderful and warm! We had a new entrant this year with Marlin Bauman and family who had two nice milking two-year olds, bred at Maplehurst, to nominate for inspection. Cattle on display and in the herds visited were impressive! #YES!

Also great news, from a National perspective, was that the Wanamakers from New Brunswick were at Canadian Dairy Xpo and were able to visit three Ontario Guernsey herds while in the province! #NATIONALACTIVITY

When Kerry Alexander and I were at Eby Manor for Breeder's Cup judging Jim Eby mentioned to Kerry that they had averaged five cars per hour at their farm store that morning! The Eby Manor product line is expanding and that means consumers will have an even wider range of Guernsey-based

products to enjoy! #PROGRESS (ps Not to make you jealous but I am treating myself to some amazing Four All Coconut Cream Pie ice cream made with Golden Guernsey milk from Eby Manor as I write this report!  
#MMMMMMGOOD!)

We receive a constant supply of great news about the burgeoning renaissance of the Guernsey breed south of us in the USA from one of the most enthusiastic folks on this planet, Brent Clements! Brent is doing spectacular work for US Guernsey and the breed at large! And not only are Brent and his associates working hard they are enjoying a rich harvest of business from people new to the breed! #EXPLOSIVE

The second Guernsey Association Syndicate bull Eby Manor Indigo is now readily available via the Semex Global network! A very nice order from England has recently been placed!  
#ACTION

Over the next few months we'll be working on finding cattle for those seeking good Guernsey genetics and milk and planning travel to the World Guernsey Conference in the Eastern USA and revving up for the National Show in Ancaster in September, while upping use of social media relating to Guernseys!

And "be warned" Board of Directors, we'll have some ideas for further breed improvement and growth for you to consider!  
#LETSGO

THANKS to Rob Forster, Scott Gordon and the ever and always amazing Jessie Weir for guidance and support as we have roared into the first month of transition! The shoes that Rob left to fill are huge and we are daily inspired to get to work!

Let me conclude with this final hashtag wordsmithed by Alan Spence: #EVERYTHINGGOLDISNEWAGAIN

Onward, ever ONWARD!  
Russe!!

*Russell Gammon*

Canadian Guernsey Fieldman  
rgammon@guernseycanada.ca

## Story continued from page 5

through talking to customers.

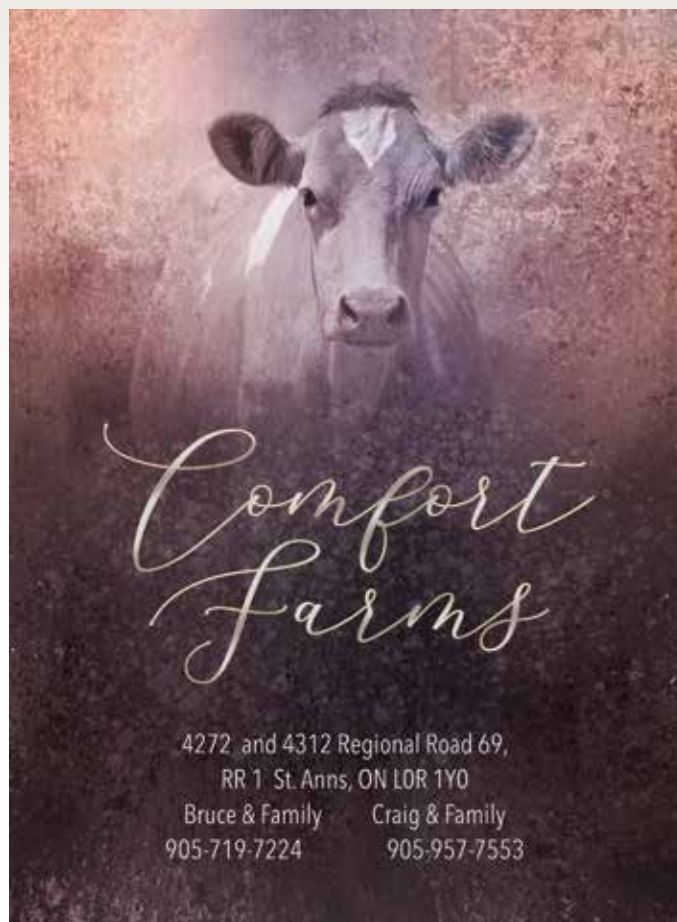
"We do have to tell the story and I made some information boards for Open Farm Sunday so people really understand it. It is a lovely meat and healthy too," says Katharine.

Average yield is around 5,800 litres per cow per year. "Our focus is quality, not quantity," says Katharine. Butterfat is typically 5 per cent and protein 3.8 per cent.

Katharine has one part-time helper for cheesemaking and together they produce about 18 tonnes per year. The range includes three main products – the Suffolk Gold, Blue and Brie – and they are introducing Blue Brie this year. They supply local farm shops and delicatessens through wholesalers, as well as selling through their own shop on the farm and vending machine.

"We are at capacity," she says. "So, our future plans are to expand outwards – maybe school visits and a tea room. There is so much potential.

"We love what we do and we feel so fortunate to do a job that we love."





# CANADIAN NATIONAL GUERNSEY SHOW 2018 RESULTS

---



JUNIOR CALF - Don Haven LATIMER VI, Bydand Farm

## JUNIOR CALF

- |   |                                     |                    |
|---|-------------------------------------|--------------------|
| 1 | <b>DON HAVEN LATIMER VI</b>         | BYDAND FARM        |
| 2 | <b>SELKIRK DAUNTE LEANNE</b>        | SELKIRK VIEW FARMS |
| 3 | <b>MAPLEHURST NOVAK FAULTLESS</b>   | KEN D FORSTER      |
| 4 | <b>RUNNING SPRING LATIMER TILLY</b> | KEN D FORSTER      |
| 5 | <b>SELKIRK DAUNTE BECCA</b>         | SELKIRK VIEW FARMS |



INTERMEDIATE CALF - Don Haven KAKADU VELMA, Bydand Farm

## INTERMEDIATE CALF

- |   |                                  |               |
|---|----------------------------------|---------------|
| 1 | <b>DON HAVEN KAKADU VELMA</b>    | BYDAND FARM   |
| 2 | <b>COMFORT FARMS GRACE</b>       | COMFORT FARMS |
| 3 | <b>MAPLEHURST PISTOLL TRUDEE</b> | KEN D FORSTER |



SENIOR CALF - Dix Lee GG DOMINO-ETV, Jocelyn Forster

## SENIOR CALF

- |   |                                 |                 |
|---|---------------------------------|-----------------|
| 1 | <b>DIX LEE HP GG DOMINO-ETV</b> | JOCELYN FORSTER |
|---|---------------------------------|-----------------|



**INTERMEDIATE YEARLING**

- |   |                                   |                    |
|---|-----------------------------------|--------------------|
| 1 | <b>DON HAVEN LATIMER VESPA</b>    | BYDAND FARM        |
| 2 | <b>MAPLEHURST PISTOLL WHISKER</b> | KEN D FORSTER      |
| 3 | <b>COMFORT FARMS DYNA</b>         | COMFORT FARMS      |
| 4 | <b>DON HAVEN LATIMER VAVOOM</b>   | BYDAND FARM        |
| 5 | <b>SELKIRK VINCENT LADY</b>       | SELKIRK VIEW FARMS |



INTERMEDIATE YEARLING - Don Haven LATIMER VESPA, Bydand Farm

**SENIOR YEARLING**

- |   |                                  |                    |
|---|----------------------------------|--------------------|
| 1 | <b>BROADVIEW LEVI ARLENE</b>     | ROB FORSTER        |
| 2 | <b>COMFORT FARMS DAENRYS</b>     | COMFORT FARMS      |
| 3 | <b>FSV SELKIRK VINCENT LYRIC</b> | SELKIRK VIEW FARMS |
| 4 | <b>MAPLEHURST LOGO ROSALEE</b>   | KEN D FORSTER      |



SENIOR YEARLING - Broadview LEVI ARLENE, Rob Forster

**JUNIOR CHAMPION**

**BROADVIEW LEVI ARLENE**, Rob Forster

**RESERVE JUNIOR CHAMPION**

**DON HAVEN LATIMER VESPA**, Bydand Farm



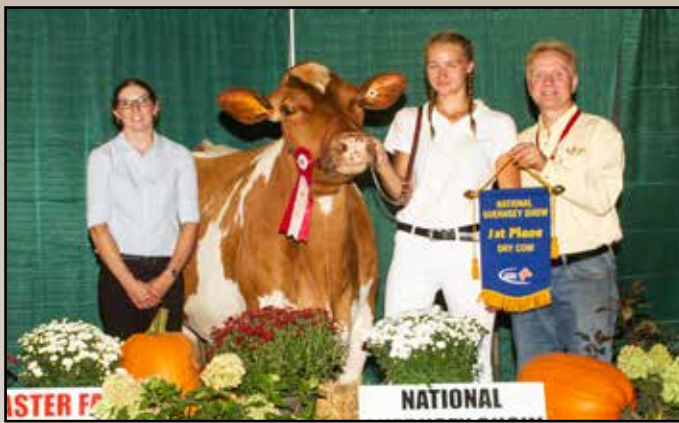
Jr Champion. - Broadview Levi Arlene, Ken D. Forster  
RES. Jr. Champion. - Don Haven Latimer Vespa, Bydand Farm

**JUNIOR HERD**

- 1 - **BYDAND FARM**
- 2 - **KEN D. FORSTER**
- 3 - **COMFORT FARMS**
- 4 - **SELKIRK VIEW FARMS**



JUNIOR HERD - BYDAND FARM



DRY COW - Maplehurst DYNAMIC LAUGH, Ken D. Forster

## DRY COW

- |   |                                 |               |
|---|---------------------------------|---------------|
| 1 | <b>MAPLEHURST DYNAMIC LAUGH</b> | KEN D FORSTER |
| 2 | <b>COMFORT FARMS AQUARIUS</b>   | COMFORT FARMS |



2 YEAR OLD - Broadview LEVI APPLE, Bydand Farm

## 2 YEAR OLD

- |   |                                |               |
|---|--------------------------------|---------------|
| 1 | <b>BROADVIEW LEVI APPLE</b>    | BYDAND FARM   |
| 2 | <b>MAPLEHURST TOBY PANDORA</b> | KEN D FORSTER |
| 3 | <b>MAPLEHURST PYTHON NIFTY</b> | KEN D FORSTER |
| 4 | <b>MAPLEHURST PILOT NIMBLE</b> | KEN D FORSTER |
| 5 | <b>COMFORT FARMS GABRIELLE</b> | COMFORT FARMS |



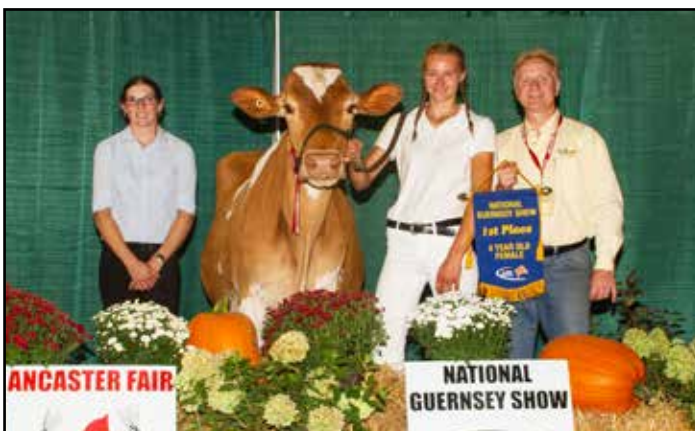
3 YEAR OLD - Maplehurst LES ZELDA, Rob Forster

## 3 YEAR OLD

- |   |                                     |                 |
|---|-------------------------------------|-----------------|
| 1 | <b>MAPLEHURST LEGEND WISE</b>       | KEN D FORSTER   |
| 2 | <b>MAPLEHURST LEGEND WINTER</b>     | KEN D FORSTER   |
| 3 | <b>MAPLEHURST TURLEY GREAT</b>      | KEN D FORSTER   |
| 4 | <b>COULEE CREST CARTER LINDY-ET</b> | JOCELYN FORSTER |
| 5 | <b>COMFORT FARMS AYL A</b>          | COMFORT FARMS   |
| 6 | <b>COMFORT FARMS ELLERY</b>         | COMFORT FARMS   |

## 4 YEAR OLD

- |   |                                 |                    |
|---|---------------------------------|--------------------|
| 1 | <b>MAPLEHURST LEGEND GLADYS</b> | KEN D FORSTER      |
| 2 | <b>DON HAVEN TITAN VIVIAN</b>   | BYDAND FARM        |
| 3 | <b>SELKIRK PYTHON LYNETTE</b>   | SELKIRK VIEW FARMS |
| 4 | <b>COMFORT FARMS MARGRET</b>    | COMFORT FARMS      |

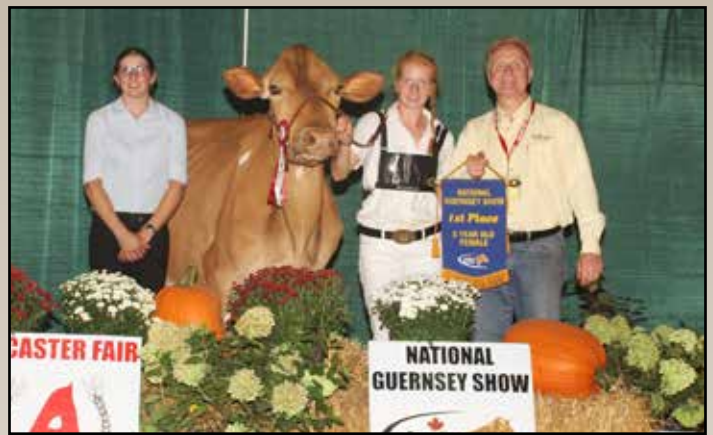


3 YEAR OLD - Maplehurst LEGEND GLADYS, Ken D. Forster



## 5 YEAR OLD

- |   |                                     |               |
|---|-------------------------------------|---------------|
| 1 | <b>MAPLEHURST PRADAS WHISK</b>      | KEN D FORSTER |
| 2 | <b>MAPLEHURST PHOENIX BLAZE</b>     | KEN D FORSTER |
| 3 | <b>WEE KIN FARM YOGI SAFFRON-ET</b> | KEN D FORSTER |
| 4 | <b>COMFORT FARMS MEG</b>            | COMFORT FARMS |
| 5 | <b>COMFORT FARMS SHARON 2</b>       | COMFORT FARMS |
| 6 | <b>DON HAVEN ACHIEVE VERMONT</b>    | BYDAND FARM   |



5 YEAR OLD - Maplehurst PRADAS WHISK, Ken D. Forster

## BREEDER'S HERD

- 1 - KEN D. FORSTER
- 2 - COMFORT FARMS
- 3 - BYDAND FARM
- 4 - SELKIRK VIEW FARMS



BREEDER'S HERD - KEN D. FORSTER

## PROGENY OF DAM

- |   |                                 |                    |
|---|---------------------------------|--------------------|
| 1 | <b>MAPLEHURST LEGEND WINTER</b> | KEN D FORSTER      |
| 2 | <b>SELKIRK PYTHON LYNETTE</b>   | SELKIRK VIEW FARMS |

## PREMIER EXHIBITOR

**KEN D. FORSTER**

## PREMIER BREEDER

**KEN D. FORSTER**



PROGENY OF DAM. - Comfort Farms DENNY, Comfort Farms Ltd.

## GRAND CHAMPION

**BROADVIEW LEVI APPLE**, Bydand Farm

## RESERVE GRAND CHAMPION

**MAPLEHURST PRADAS WHISK**, Ken D. Forster





HERDSMAN AWARD - SELKIRK VIEW FARMS

**HERDSMAN AWARD**

**SELKIRK VIEW FARMS**

**PEEWEE SHOWMANSHIP**

- 1 - TYSON EBY
- 2 - ELISE FORSTER
- 3 - EDITH LINDSAY
- 4 - IRIS LINDSAY
- 5 - OLWYNN LINDSAY

**JUNIOR SHOWMANSHIP**

- 1 - JOCELYN FORSTER
- 2 - BRANDON BARTLETT
- 3 - SARAH VERHEY
- 4 - MADISON BARTLETT
- 5 - BROCK BARTLETT
- 6 - KATIE COCKING
- 7 - ABBY COCKING
- 8 - MARTY VAN SPRONSEN
- 9 - AVA FORSTER



CANWEST DHI AWARD - Don Haven TITAN VIVIAN, Bydand Farm

**CANWEST DHI AWARD**

**DON HAVEN TITAN VIVIAN**, Bydand Farm

**PHOTOGRAPHY**

**FRANK ROBINSON**

# 2018 NATIONAL GUERNSEY SHOW SPONSORS

---

*We wish to extend our appreciation to all the sponsors that helped to make the 2018 Canadian National Guernsey Show a success!*

BROADVIEW FARMS  
 WENTWORTH NIAGARA GUERNSEY CLUB  
 YANTZI'S FEED & SEED  
 UPPER CANADA CHEESE COMPANY  
 EASTGEN  
 ELDALE VETERINARY CLINIC  
 EBY MANOR FARMS INC.  
 CONESTOGO AGRI SYSTEMS INC.

METRO HIGHLAND CLUB  
 GENEX CANADA  
 KEN D. FORSTER  
 DUNDAS ANIMAL HOSPITAL  
 W-S FEED & SUPPLIES LTD.  
 FLORADALE FEED MILL LTD  
 RKD WEB STUDIOS  
 SELECT SIRES GENERATIONS

QUALITY SEEDS LTD.  
 CALLUMLEA FARMS  
 BRUCE & SHERRY TELFER  
 AYR FARMERS MUTUAL INS. CO  
 CANWEST DHI



# CDN GENETIC EVALUATION HIGHLIGHTS

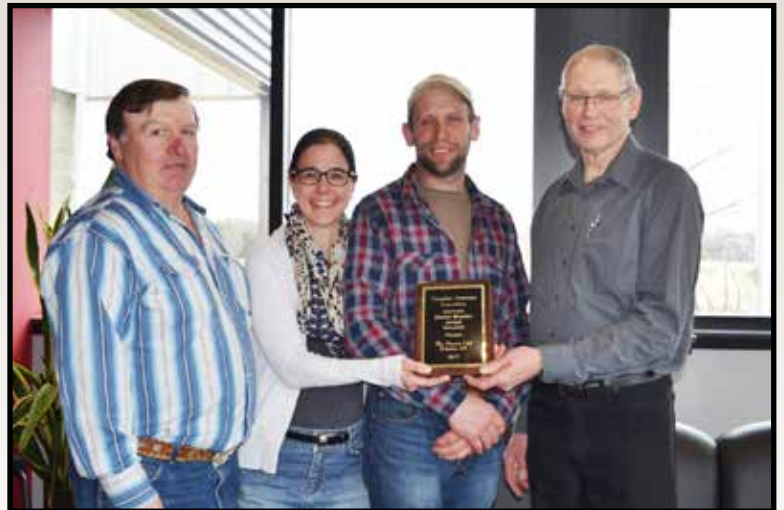
APRIL 2019

## "Indy" Takes Over as Queen of the Guernsey Breed

After years of being in the shadows, Eby Manor D L Indy gains 151 LPI points this April and takes over as the new #1 LPI cow in the breed (#2 Fat). For Glen Haven Lewis Lana, this means she is forced into #2 LPI spot following years of domination at the helm (#4 Protein). Two other cows also make significant gains this round to enter the Top 5 LPI list, namely Eby Manor Logo Sylvia at #3 LPI, who gained 116 points from her debut at #8 LPI in December (#5 Protein), and Lindrian Pamper Bear ET 200 at #4 LPI (up from #10 with a gain of 127 points). Guernsey View Urma's Expense experiences little change and completes the list of breed leaders at #5 LPI. The highest newly indexed cow this round is Eby Manor Cimeron Kayla at #23 LPI. For sires, the trio of leaders remains unchanged with Dairyman Double Dawson still at #1 LPI (#2 Fat), ahead of his sire, Pine Ridge Double L, at #2 LPI (tied #4 Fat) and Trotacre Enhancer Lewis in #3 LPI position (also #3 for Milk and Protein). Coulee Crest Grumpy Legend climbs for LPI to take #4 spot this April (#5 Protein) and surpasses his sire, Golden J Ronald Grumpy, who stays firm at #5 LPI.



Congratulations to award recipients at the 2018 Annual General Meeting (l to r): Morris & Penny Bartlett (Broadview Tulip), Ken Forster (Gold Star Breeder Award), Jim Eby (Gold Star Breeder Award, 2018 Master Breeder), and Scott Gordon (Broadview Apricot).



Congratulations Eby Manor Farms Ltd., receiving a 2018 Master Breeder Shield.



*Gold Star* **BREEDER AWARD**

**Maplehurst Farm**

Lynden, ON

**Eby Manor Farm**

Waterloo, ON

*Congratulations on your achievement!*

To achieve this honour, a homebred herd will have at least 15 completed records, with classification score average at least 82.5% and BCA 10 points above the National Herd Average for Butterfat and Protein.

# PRODUCTION RECORDS

Production Records completed January - April 2019 and listed by composite BCA

## Yearlings

GUCANF11903194	SPRING ROSE LIBIDO BUTTERCUP	PB	GP	82	1	11	7105	346	4.9	260	3.7	260	253	268	781	AARON HENHOEFFER	ON
GUCANF12062977	EBY MANOR NAVAJO KENZY	PB	GP	80	1	11	7580	346	4.6	254	3.4	261	240	247	748	EBY MANOR LTD	ON
GUCANF12062981	EBY MANOR NAVAJO DESTINY	87	GP	80	1	11	6772	312	4.6	217	3.2	244	223	219	686	EBY MANOR LTD	ON
GUCANF12062979	EBY MANOR JETHRO BEATRICE	93	GP	80	1	11	6169	298	4.8	213	3.5	214	210	209	633	EBY MANOR LTD	ON
GUCANF11902325	COMFORT FARMS LYRA	PB	GP	80	1	11	6175	279	4.5	213	3.5	215	196	209	620	COMFORT FARMS LTD	ON

## Jr. 2 Year Old

GUCANF12447964	CALLUMLEA LEGEND FLORA	PB	GP	83	2	0	9633	435	4.5	347	3.6	342	306	347	995	KENNETH MCNABB	ON
GUCANF12062980	EBY MANOR LOGO SYLVIA	PB	GP	82	2	0	8869	407	4.6	285	3.2	315	287	285	887	EBY MANOR LTD	ON
GUCANF12062974	EBY MANOR GOTCHA SAHARA	PB	G	76	2	1	8033	389	4.8	291	3.6	272	265	277	814	EBY MANOR LTD	ON
GUCANF12062972	EBY MANOR GOTCHA LENA	PB	G	78	2	0	6785	356	5.2	256	3.8	231	244	244	719	EBY MANOR LTD	ON
GUCANF12292450	MAPLEHURST LEGEND CARLA	PB	GP	83	2	4	6894	339	4.9	253	3.7	233	228	241	702	KEN D FORSTER	ON
GUCANF9594232	SANDMOOR SAMANTHA CLEO 7C	PB	GP	80	2	2	7073	330	4.7	248	3.5	236	221	232	689	MICHAEL B SANDESON	NS
GUCANF12292447	MAPLEHURST LEGEND FOUND	PB	VG	86	2	0	6776	322	4.8	233	3.4	227	218	220	665	KEN D FORSTER	ON
GUCANF12292457	MAPLEHURST JAGUAR LUCY	PB	VG	85	2	0	6543	291	4.5	214	3.3	227	202	208	637	KEN D FORSTER	ON
GUCANF12292433	MAPLEHURST GARY LISA	PB	VG	86	2	3	6970	296	4.2	227	3.3	228	193	208	629	KEN D FORSTER	ON
GUCANF12062978	EBY MANOR PILOT JESS	PB	G	78	2	0	5848	322	5.5	206	3.5	203	223	200	626	EBY MANOR LTD	ON

## Sr. 2 Year Old

GUCANF12236336	LINDRIAN BAMBOO LEGEND	PB	VG	88	2	9	9655	433	4.5	338	3.5	297	266	291	854	JOHN & LINDA TAMIS	BC
GUCANF11787135	WINTERHIME NAVAJO SAGE	PB	VG	88	2	11	7378	271	3.7	258	3.5	224	164	221	609	LISA FREEZE	NB
GUCANF11903159	SPRING ROSE LEGEND DESTINY	75	GP	82	2	10	5785	336	5.8	218	3.8	187	215	198	600	AARON HENHOEFFER	ON
GUCANF11902307	COMFORT FARMS AYLA	PB	GP	83	2	7	5806	255	4.4	202	3.5	186	162	182	530	COMFORT FARMS LTD	ON
GUCANF12251445	BEAVERWOOD LEGION'S CORAL	PB			2	7	5201	293	5.6	205	3.9	163	183	180	526	GARY WEST	NB
GUCANF12088219	BEAVERWOOD DAWSON'S ANNE	PB			2	6	5921	245	4.1	197	3.3	189	157	176	522	GARY WEST	NB
GUCANF12251454	BEAVERWOOD LEVI'S CAMMI	PB			2	8	5562	263	4.7	174	3.1	181	169	158	508	GARY WEST	NB

## Jr. 3 Year Old

GUCANF11632483	LINDRIAN LEGEND PATI	PB	VG	85	3	3	8980	407	4.5	319	3.5	279	250	280	809	JOHN & LINDA TAMIS	BC
GUCANF12292424	MAPLEHURST LEGEND WINTER	PB	VG	89	3	0	8784	368	4.2	310	3.5	263	220	261	744	KEN D FORSTER	ON
GUCANF11356260	MAPLEHURST LEGEND WISE	PB	VG	89	3	0	8180	347	4.2	286	3.5	245	208	240	693	KEN D FORSTER	ON
GUCANF12088239	BEAVERWOOD LEGION'S MONICA	PB			3	1	7925	392	5.0	253	3.2	235	232	211	678	GARY WEST	NB
GUCANF11356256	MAPLEHURST GEO ROSEBUD	PB	VG	87	3	3	7975	348	4.4	282	3.5	233	204	231	668	KEN D FORSTER	ON
GUCANF12251436	BEAVERWOOD NINJA'S LAURYN	PB			3	4	6828	328	4.8	265	3.9	211	200	230	641	GARY WEST	NB
GUCANF11632474	LINDRIAN PIPPET ASSAULT	PB	VG	85	3	2	7172	352	4.9	249	3.5	213	208	208	629	JOHN & LINDA TAMIS	BC
GUUSAF78004247	COULEE CREST CARTER LINDY-ET	PB	VG	88	3	3	7688	330	4.3	238	3.1	230	195	200	625	JOCELYN FORSTER	ON
GUCANF11632484	LINDRIAN PUTZI ASSUALT	PB	GP	81	3	1	5782	276	4.8	200	3.5	180	169	175	524	JOHN & LINDA TAMIS	BC
GUCANF12251439	BEAVERWOOD SHERMAN'S CINDY	PB			3	0	4354	245	5.6	173	4.0	131	148	147	426	GARY WEST	NB

## Sr. 3 Year Old

GUCANF11553896	EBY MANOR GARY SASHA	PB			3	7	10883	478	4.4	375	3.5	308	269	298	875	EBY MANOR LTD	ON
----------------	----------------------	----	--	--	---	---	-------	-----	-----	-----	-----	-----	-----	-----	-----	---------------	----



# PRODUCTION RECORDS

Production Records completed January - April 2019 and listed by composite BCA

GUCANF12088213	BEAVERWOOD BRUCE'S PAULINE	PB	3	8	7775	415	5.3	299	3.9	222	236	239	697	GARY WEST	NB
GUCANF11356240	MAPLEHURST LES LOGIC	PB	3	9	8321	427	5.1	276	3.3	234	240	219	693	KEN D FORSTER	ON
GUCANF12062938	EBY MANOR PHOENIX POLLY	PB	3	7	7587	361	4.8	266	3.5	227	214	224	665	EBY MANOR LTD	ON
GUCANF12031145	DON HAVEN TITAN VISION	PB	3	11	7189	364	5.1	251	3.5	213	214	209	636	JOHN W GORDON	ON
GUCANF11755689	BEAVERWOOD LEGEND'S DANDY	PB	3	10	7320	331	4.5	253	3.5	204	183	198	585	MICHAEL B SANDESON	NS
GUCANF11755697	BEAVERWOOD ASSUALT'S GOLDEN	PB	3	11	6011	300	5.0	228	3.8	171	170	182	523	GARY WEST	NB
<b>4 Year Old</b>															
GUCANF11356230	MAPLEHURST GARY NICE	PB	4	1	9447	462	4.9	319	3.4	276	264	261	801	KEN D FORSTER	ON
GUCANF11553875	EBY MANOR GOLIATH DINAH	PB	4	6	10009	469	4.7	323	3.2	270	252	245	767	EBY MANOR LTD	ON
GUCANF11553878	EBY MANOR PIES WINTTANA	PB	4	5	8636	443	5.1	324	3.8	239	242	251	732	EBY MANOR LTD	ON
GUCANF11553898	EBY MANOR J ELLIE	PB	4	0	8539	417	4.9	288	3.4	249	241	236	726	EBY MANOR LTD	ON
GUCANF11755670	BEAVERWOOD GARY'S ALYSSA	75	4	7	8659	434	5.0	292	3.4	238	238	226	702	GARY WEST	NB
GUCANF11755675	BEAVERWOOD ALSTAR'S CAITLYN	PB	4	5	7039	385	5.5	271	3.9	195	213	212	620	GARY WEST	NB
GUCANF11356234	MAPLEHURST GRUMPY BINOO	PB	4	2	7311	358	4.9	261	3.6	201	197	201	599	KEN D FORSTER	ON
GUCANF11755695	BEAVERWOOD BOLERO'S RACHEL	87	4	4	6129	333	5.4	217	3.5	183	197	182	562	GARY WEST	NB
GUCANF11755678	BEAVERWOOD ALSTAR'S RACHEL	PB	4	8	4917	245	5.0	161	3.3	141	139	130	410	GARY WEST	NB
<b>5 Year Old</b>															
GUCANF11009754	LINDRIAN POLITE	PB	5	7	14709	737	5.0	460	3.1	394	396	346	1136	JOHN & LINDA TAMIS	BC
GUCANF11120547	EBY MANOR VANCE PETRINA	PB	5	10	9729	496	5.1	347	3.6	253	260	253	766	EBY MANOR LTD	ON
GUCANF11755660	BEAVERWOOD PHONZE'S COCO	75	5	0	9390	379	4.0	312	3.3	255	206	238	699	GARY WEST	NB
GUCANF11463028	DON HAVEN ACHIEVE VERMONT	PB	5	3	8620	424	4.9	284	3.3	232	229	215	676	JOHN W GORDON	ON
GUCANF11755647	BEAVERWOOD POPEYE'S SHEILA	PB	5	1	8978	409	4.6	295	3.3	237	218	219	674	GARY WEST	NB
GUCANF11356219	MAPLEHURST PRADAS WHISK	PB	5	1	8589	376	4.4	282	3.3	239	209	220	668	KEN D FORSTER	ON
GUCANF11591063	BROADVIEW APRICOT	PB	5	7	7789	416	5.3	270	3.5	218	234	212	664	SCOTT GORDON	ON
GUCANF11553871	EBY MANOR WARD LISA	PB	5	0	6865	326	4.8	237	3.5	186	177	181	544	EBY MANOR LTD	ON
GUCANF10996416	COMFORT FARMS MADISON	PB	5	11	6955	313	4.5	218	3.1	185	168	163	516	COMFORT FARMS LTD	ON
GUCANF11320694	CEDAR ROCK ATLANTIC LILLY	PB	5	9	6251	226	3.6	205	3.3	175	127	161	463	WANAMAKER BROTH-	NB
<b>Mature Cow</b>															
GUCANF11028525	BIG SPRING LEWIS JAMACIA	87	7	9	12301	470	3.8	372	3.0	318	251	270	839	EXCELSIOR FARMS INC	ON
GUCANF11120500	EBY MANOR MOREY SPECIAL	PB	7	5	9026	437	4.8	317	3.5	234	232	231	697	EBY MANOR LTD	ON
GUCANF11255571	BEAVERWOOD DYNAMIC'S CHLOE	PB	6	9	7410	424	5.7	277	3.7	214	244	225	683	GARY WEST	NB
GUCANF10848156	BEAVERWOOD KAIN'S STELLA	PB	7	3	8342	402	4.8	273	3.3	216	210	198	624	GARY WEST	NB
GUCANF9594203	MAPLEHURST DYNAMIC LAUGH	PB	7	6	7212	379	5.3	272	3.8	191	203	203	597	KEN D FORSTER	ON
GUCANF11120515	EBY MANOR VANCE RAE	PB	7	5	6740	280	4.2	227	3.4	183	155	173	511	BRETT ALDERS	ON
GUCANF10996366	COMFORT FARMS MARLIE	PB	8	0	5964	307	5.2	217	3.6	163	172	166	501	COMFORT FARMS LTD	ON
GUCANF10837642	CEDAR ROCK LEGION BETTY	PB	8	0	5650	273	4.8	198	3.5	150	149	148	447	WANAMAKER BROTH-	NB
GUCANF11320690	CEDAR ROCK PINTO ZENA	PB	8	0	5902	223	3.8	172	2.9	169	128	139	436	WANAMAKER BROTH-	NB
<b>Aged Cow</b>															
GUCANF7680006	BIG SPRING DECISION WANDA	PB	11	2	7857	378	4.8	257	3.3	216	217	199	632	EBY MANOR LTD	ON

# String of SUCCESS

Highlighting our success at the 2018 Canadian National Guernsey Show



**Broadview Levi** *Apple*

Grand Champion & 1<sup>st</sup> 2-Yr. Old  
2-01P 6955 5%F 3.4%P 252 253 241 BCA  
VG-85 RO Levi x VG Ninja x EX Bolero



**Don Haven Latimer** *Vespa*

Reserve Junior Champion & 1<sup>st</sup> Intermediate Yearling  
Latimer x VG-87 Legion x EX-91-3E Deemand x EX Loral x EX-92-4E Magicman

## Additional Highlights Include:

1<sup>st</sup> Junior Calf - Don Haven Latimer Vi  
1<sup>st</sup> Intermediate Calf - Don Haven Kakadu Velma  
1<sup>st</sup> Junior Herd



**Don Haven Titan** *Vivian*

2<sup>nd</sup> 4-Yr Old & CanWest DHI Award winner  
2-01 7534 5%f 3.4%p 268 265 258  
Dam of Latimer Vi  
VG-87 Titan x GP-83 Yogibear x VG-88 Royalty x EX-92-4E Magicman

## BYDAND FARM

Scott & Katrina Gordon  
Hanna & Kayla  
(519) 994-6910

Bydand Holsteins & Don Haven Guernseys and Ayrshires  
5436 Wellington Rd. 29, Rockwood, ON N0B 2K0  
bydandfarm@gmail.com

John & Nancy  
(519) 824-9548



# CANADIAN GUERNSEY ASSOCIATION ANNUAL AWARDS 2018

---

## MARSHDENE FARMS AWARD

To the Highest Lifetime Butterfat Producer completing a record in 2018

### CALLUMLEMA SILVERADO VERNA (VG)

**3189** kg in 7 lactations

Clarkridge North Farm, Coldwater, ON

## CALLUMLEA FARM AWARD

To the Highest Lifetime Protein Producer completing a record in 2018

### BROADVIEW TULIP 2 (EX)

**2310** kg in 7 lactations

Morris & Penny Bartlett, Caledonia, ON

## GARTMORE FARMS AWARD

For the Highest Increase in BCA over the previous year (2016–2017)

### WANAMAKER BROTHERS, NAUWIGEWAWUK, NB

2016 BCA 444 – 2017 BCA 501 – Increase **57**

## LINDRIAN FARMS AWARD

For the Highest Butterfat Herd Average (kg) 2017

### LINDRIAN FARMS, SURREY, BC

16 records 9194 405 301 BCA 281M **248F** 259P

## CHINOOK CREST DAIRY AWARD

For the Highest Protein Herd Average (kg) 2017

### LINDRIAN FARMS, SURREY, BC

16 records 9194 405 301 BCA 281M 248F **259P**

## LINDLEY FARM AWARD

For the Highest Composite Breed Class Average 2017

### LINDRIAN FARMS, SURREY, BC

BCA 281M 248F 259P = Composite BCA Total **788**

# GUERNSEY CATTLE BREEDERS' ASSOCIATION OF ONTARIO ANNUAL AWARDS 2018

---

## Ontario Guernsey Association

Awarded to the Breeder and Owner of the **Grand Champion**

**Cow** at 2018 Ontario Shows

Based on lifetime records

### MAPLEHURST LEGEND GLADYS

Grand Champion Rockton Show 2018

19933M 889F 679P BCA 241M 210F 226P

Ken D Forster, Lynden, ON

Ontario Guernsey Association Award for highest Butterfat Production (kg)

### BROADVIEW ZENA (EX-90)

4-10 9773M **570F** 5.8% 352P 3.6% BCA 260M 305F 263P

Eby Manor Ltd, Waterloo, ON

Ontario Guernsey Association Award for highest Protein Production (kg)

### EBY MANOR PIES SANDRA (GP-82)

4-8 12577M 506F 4.0% **425P** 3.4% BCA 370M 296F 351P

Eby Manor Ltd., Waterloo, ON

Ontario Guernsey Association Award for the cow with the Highest BCA

Milk + Fat + Protein

### EBY MANOR PIES SANDRA (GP-82)A

4-8 12577M 506F 4.0% 425P 3.4% BCA 370M 296F 351P

**Total Breed Class Average: 1017**

Eby Manor Ltd., Waterloo, ON

# CANADIAN CLASS LEADERS

Based on Breed Class Average January - December 2018 Records

## BUTTERFAT

### Mature

#### EBY MANOR VANCE FRAN (VG-85)

11481 514 351 BCA 319M **289F** 274P  
Eby Manor Ltd, Waterloo, ON

### Five Year Old

#### EBY MANOR D L JULIE (VG-86)

10912 535 378 BCA 322M **311F** 312P  
Eby Manor Ltd, Waterloo, ON

### Four Year Old

#### EBY MANOR VANCE LYDEL (GP-84)

10563 553 398 BCA 301M **309F** 318P  
Eby Manor Ltd., Waterloo, ON

### Three Year Old

#### COMFORT FARMS PRIUS (G-78)

11342 534 370 BCA 339M **320F** 311P  
Lewis Land and Stock, Holstein, ON

### Two Year Old

#### EBY MANOR CORDELL SAMANTHA (VG-85)

6750 480 259 BCA 246M **295F** 265P  
Eby Manor Ltd, Waterloo, ON

### Yearling

#### EBY MANOR PIES TIARA (G-78)

8213 409 291 BCA 301M **299F** 300P  
Eby Manor Ltd, Waterloo, ON

## PROTEIN

### Mature

#### EBY MANOR VANCE FRAN (VG-85)

11481 514 351 BCA 319M 289F **274P**  
Eby Manor Ltd, Waterloo, ON

### Five Year Old

#### EBY MANOR D L JULIE (VG-86)

10912 535 378 BCA 322M 311F **312P**  
Eby Manor Ltd, Waterloo, ON

### Four Year Old

#### EBY MANOR PIES SANDRA (GP-82)

12577 506 425 BCA 370M 296F **351P**  
Cedar Ridge Farms Ltd, Keswick Ridge, NB

### Three Year Old

#### COMFORT FARMS PRIUS (G-78)

11342 534 370 BCA 339M 320F **311P**  
Lewis Land and Stock, Holstein, ON

### Two Year Old

#### EBY MANOR DAWSON ROSALYN (VG-85)

8226 411 291 BCA 282M 280F **280P**  
Eby Manor Ltd, Waterloo, ON

### Yearling

#### EBY MANOR PIES TIARA (G-78)

8213 409 291 BCA 301M 299F **300P**  
Eby Manor Ltd, Waterloo, ON

## 80 TONNE COWS

		#LAC	MILK	FAT	PROT	OWNER	PROV
REDNGOLD COLUMBUS DAWN	VG	11	114824	5429	4283	ALAN SPENCE	ON
EBY MANOR JORDAN DEKOTA	GP	13	107818	5467	3859	EBY MANOR LTD	ON
LINDRIAN MAGICMAN POPPY	GP	7	102609	4685	3681	JOHN & LINDA TAMIS	BC
MAPLEHURST KINGS LILIAN	EX	10	90845	3965	3051	ROBERT FORSTER	ON
MAPLEHURST BEST SATINA	VG2	8	86583	3367	2622	KEN D FORSTER	ON
BEAVERWOOD MARION 2		13	84827	3658	3029	GARY WEST	NB
MAPLEHURST WARDEN BIANCA	VG	5	84347	3804	3023	KEN D FORSTER	ON
MAPLEHURST FALCON CANARY	GP	6	81997	3374	2930	PETER NOOYEN	ON
LINDRIAN PATSY LAMAR 27	GP	8	81746	3692	2658	JOHN & LINDA TAMIS	BC
LINDRIAN PIZZAZ	VG	7	81210	3473	2739	JOHN & LINDA TAMIS	BC
BROWN EDEN FAYVOR GEM	VG2	8	81187	3593	2757	BROWN EDEN FARMS	ON
MAPLEHURST FAYETTE MARSHA	EX	9	81102	4076	3013	ALAN SPENCE	ON

# SUPERIOR PRODUCTION AWARDS

BASED ON 2018 PRODUCTION RECORDS

---

## **Butterfat + 475 kg**

### **BROADVIEW ZENA (EX-90)**

4 yr 9773 570 5.8% 352 3.6%  
BCA 260M 305F 263P  
Eby Manor Ltd., Waterloo, ON

### **EBY MANOR VANCE LYDEL (GP-84)**

4 yr 10563 553 5.2% 398 3.8%  
BCA 301M **309F** 318P  
Eby Manor Ltd., Waterloo, ON

### **EBY MANOR D L JULIE (VG-86)**

5 yr 10912 535 4.9% 378 3.5%  
BCA 322M **311F** 312P  
Eby Manor Ltd., Waterloo, ON

### **COMFORT FARMS PRIUS (G-78)**

3 yr 11342 534 4.7% 370 3.3%  
BCA 339M **320F** 311P  
Lewis Land and Stock, Holstein, ON

### **GREENBROOK CANDY BLUE SPRUCE (VG-85)**

4 yr 11298 530 4.7% 398 3.5%  
BCA 306M **285F** 302P  
Eby Manor Ltd., Waterloo, ON

### **LINDRIAN POLITE (GP-83)**

4 yr 12780 528 4.1% 412 3.2%  
BCA 350M **287F** 317P  
John & Linda Tamis, Surrey, BC

### **EBY MANOR VANCE FERN (VG-87)**

5 yr 11088 525 4.7% 354 3.2%  
BCA 290M **276F** 260P  
Eby Manor Ltd., Waterloo, ON

### **EBY MANOR DAWSON WRYLNN (VG-85)**

3 yr 10269 524 5.1% 351 3.4%  
BCA 302M **308F** 290P  
Eby Manor Ltd., Waterloo, ON

### **BROADVIEW APRICOT (VG-85)**

4 yr 9484 520 5.5% 315 3.3%  
BCA 273M **297F** 254P  
Scott Gordon, Rockwood, ON

### **EBY MANOR IVAN SARAH (GP-83)**

5 yr 8981 517 5.8% 316 3.5%  
BCA 242M **276F** 239P  
Eby Manor Ltd., Waterloo, ON

## **Protein + 370 kg**

### **EBY MANOR PIES SANDRA (GP-82)**

4 yr 12577 506 4.0% 425 3.4%  
BCA 370M 296F **351P**  
Eby Manor Ltd., Waterloo, ON

### **LINDRIAN POLITE (GP-83)**

4 yr 12780 528 4.1% 412 3.2%  
BCA 350M 287F **317P**  
John & Linda Tamis, Surrey, BC

### **GREENBROOK CANDY BLUE SPRUCE (VG-85)**

4 yr 11298 530 4.7% 398 3.5%  
BCA 306M 285F **302P**  
Eby Manor Ltd., Waterloo, ON

### **EBY MANOR VANCE LYDEL (GP-84)**

4 yr 10563 553 5.2% 398 3.8%  
BCA 301M 309F **318P**  
Eby Manor Ltd., Waterloo, ON

### **EBY MANOR WARD BELLA (VG-86)**

4 yr 11138 452 4.1% 378 3.4%  
BCA 336M 267F **320P**  
Eby Manor Ltd., Waterloo, ON

### **EBY MANOR D L JULIE (VG-86)**

5 yr 10912 535 4.9% 378 3.5%  
BCA 322M 311F **312P**  
Eby Manor Ltd., Waterloo, ON

### **COMFORT FARMS PRIUS (G-78)**

3 yr 11342 534 4.7% 370 3.3%  
BCA 339M 320F **311P**  
Lewis Land and Stock, Holstein, ON

## **Honour Roll Additions** **Butterfat**

### **Yearling ~ 8th**

#### **EBY MANOR PIES TIARA**

8213 409 5.0%  
Eby Manor Ltd., Waterloo, ON

### **Jr Three Year Old ~ 10th**

#### **COMFORT FARMS PRIUS**

11342 **534** 4.7%  
Lewis Land and Stock, Holstein, ON

### **Four Year Old ~ 3rd**

#### **BROADVIEW ZENA**

9773 **570** 5.8%  
Eby Manor Ltd., Waterloo, ON

### **Four Year Old ~ 9th**

#### **EBY MANOR VANCE LYDEL**

10563 **553** 5.2%  
Eby Manor Ltd., Waterloo, ON

### **Five Year Old ~ 7th**

#### **EBY MANOR D L JULIE**

10912 **535** 4.9%  
Eby Manor Ltd., Waterloo, ON

### **Five Year Old ~ 9th**

#### **EBY MANOR VANCE FERN**

11088 **525** 4.7%  
Eby Manor Ltd., Waterloo, ON

## **Honour Roll Additions** **Protein**

### **Four Year Old ~ 3rd**

#### **EBY MANOR PIES SANDRA**

12577 **425** 3.4%  
Eby Manor Ltd., Waterloo, ON

### **Four Year Old ~ 4th**

#### **LINDRIAN POLITE**

12780 **412** 3.2%  
John & Linda Tamis, Surrey, BC

### **Four Year Old ~ 8th**

#### **GREENBROOK CANDY BLUE SPRUCE**

11298 **398** 3.5%  
Glen Haven Farms, Chrysler, ON

### **Four Year Old ~ 9th**

#### **EBY MANOR VANCE LYDEL**

10563 **398** 3.8%  
Eby Manor Ltd., Waterloo, ON




# CLASSIFICATIONS

(JANUARY - APRIL 2019)

---

GUCANF11356248	MAPLEHURST LEGEND GLADYS	EX	92	1E	KEN D FORSTER	ON
GUCANF11356202	MAPLEHURST LYNNDELLS ROSA	EX	91	3E	KEN D FORSTER	ON
GUCANF11356238	MAPLEHURST MENTOR FELICIA	EX	91	2E	KEN D FORSTER	ON
GUCANF9594223	MAPLEHURST JUDGMENT ROSIE	EX	90	3E	KEN D FORSTER	ON
GUCANF7886213	MATT-AMIA TROMBONE BONNIE-SUE	EX	90	1E	CARDINAL CREEK HOLSTEINS	ON
GUCANF11356253	MAPLEHURST LEGEND CUTIE	EX	90	1E	KEN D FORSTER	ON
GUCANF11182295	SHADY HAVEN BOLERO BELLA	VG	88		PAUL & CATHY NOBLE	ON
GUCANF11356227	MAPLEHURST GARY'S LIBBY	VG	88		KEN D FORSTER	ON
GUCANF12292442	MAPLEHURST LEGENDS LEGACY	VG	88		KEN D FORSTER	ON
GUCANF12292435	MAPLEHURST GOTCHA RITA	VG	88		KEN D FORSTER	ON
GUCANF9594206	MAPLEHURST LES VENUS	VG	87		KEN D FORSTER	ON
GUCANF10913652	EBY MANOR AARON WHEY	VG	87		EBY MANOR LTD	ON
GUCANF12292432	MAPLEHURST GEO LADDIE	VG	87		KEN D FORSTER	ON
GUCANF12292440	MAPLEHURST PILOT KAYLEE	VG	87		KEN D FORSTER	ON
GUCANF12292446	MAPLEHURST LEGEND NELLIE	VG	87		KEN D FORSTER	ON
GUCANF12292437	MAPLEHURST GOTCHA ABBY	VG	87		KEN D FORSTER	ON
GUCANF12062961	EBY MANOR LEGION PATIENCE	VG	86		EBY MANOR LTD	ON
GUCANF11464475	GREENBROOK CANDY BLUE SPRUCE	VG	85		EBY MANOR LTD	ON
GUCANF12062965	EBY MANOR CASPIAN PIXIE	VG	85		EBY MANOR LTD	ON
GUCANF12062983	EBY MANOR LEO WILLOW	VG	85		EBY MANOR LTD	ON
GUCANF12292448	MAPLEHURST JAGUAR LAVERNE	VG	85		ROBERT FORSTER	ON
GUCANF12236374	LINDRIAN PILOT DALIE	VG	85		JOHN & LINDA TAMIS	BC
GUCANF12299498	WINTERTHYME ERNIE CAYENNE	VG	85		LISA FREEZE	NB
GUUSAF78003329	PEACEFULL VALLEY NIRVANA NIBBL	VG	85		LISA FREEZE	NB
GUCANF108841512	MARDI ALSTAR MIROIR	VG	85		FERME ESPOIR	QC
GUCANF12292451	MAPLEHURST PHOENIX FABULOUS	VG	85		KEN D FORSTER	ON
GUCANF12292453	MAPLEHURST TITAN HOPE	VG	85		KEN D FORSTER	ON
GUCANF12292468	MAPLEHURST PISTOLL RAIN	VG2	86		KEN D FORSTER	ON
GUCANF12292473	MAPLEHURST PISTOLL TRIP	VG2	86		KEN D FORSTER	ON
GUCANF12292469	MAPLEHURST PILOT SAFFIRE	VG2	85		KEN D FORSTER	ON
GUCANF12292475	MAPLEHURST PISTOLL BONKERS	VG2	85		KEN D FORSTER	ON
GUCANF12062985	EBY MANOR JAGUAR FELICITY	GP	84		EBY MANOR LTD	ON
GUCANF110334225	MARDI NINJA MELO	GP	84		FERME ESPOIR	QC
GUCANF12062987	EBY MANOR LOGO WATERFALL	GP	83		EBY MANOR LTD	ON
GUCANF109759688	MARDI ASSAULT UKULÈLE	GP	83		FERME ESPOIR	QC
GUCANF110334228	MARDI CORDELL EBENEZER	GP	83		FERME ESPOIR	QC
GUCANF12292460	MAPLEHURST PYTHON FERN	GP	83		KEN D FORSTER	ON
GUCANF11182313	SHADY HAVEN PISTOL TILLY	GP	83		PAUL & CATHY NOBLE	ON
GUCANF12276613	DON HAVEN PILOT VIOLA	GP	83		JOHN W GORDON	ON
GUCANF12292474	MAPLEHURST NAVARRO LOTTERY	GP	83		ROBERT FORSTER	ON

GUCANF12062994	EBY MANOR CIMERON KAYLA	GP	82	EBY MANOR LTD	ON
GUCANF12725334	WARRINDALE REINDEER PILOT	GP	82	LILLIES HOLSTEINS (SAMUEL	ON
GUCANF12082859	SLEEPY HOLLOW ROSIE	GP	82	BRETT ALDERS	ON
GUCANF12062986	EBY MANOR NAVAJO INSPIRATION	GP	82	EBY MANOR LTD	ON
GUCANF11182300	SHADY HAVEN LEGEND TRUDY	GP	82	PAUL & CATHY NOBLE	ON
GUCANF109759686	MARDI PHOENIX EQUINACER	GP	82	FERME ESPOIR	QC
GUCANF12677167	LINDRIAN PITTY LIGHTNING	GP	82	JOHN & LINDA TAMIS	BC
GUCANF109759685	MARDI JUDGMENT RENETTE	GP	82	FERME ESPOIR	QC
GUCANF109759681	MARDI PISTOL MOKA	GP	82	FERME ESPOIR	QC
GUCANF109759680	MARDI WINSLOW MONGRIS	GP	82	FERME ESPOIR	QC
GUCANF12292466	MAPLEHURST LEOPOLD LILA	GP	81	KEN D FORSTER	ON
GUCANF12062988	EBY MANOR JAGUAR PEARL	GP	81	EBY MANOR LTD	ON
GUCANF110334233	MARDI LIGHTNING WILLMA	GP	80	FERME ESPOIR	QC
GUCANF109759682	MARDI CASPIAN URANNE	GP	80	FERME ESPOIR	QC
GUCANF110334224	MARDI PINTO TROTTINE	G	78	FERME ESPOIR	QC
GUCANF11182314	SHADY HAVEN LEVI PENELOPE	G	78	PAUL & CATHY NOBLE	ON
GUCANF110334226	MARDI PISTOL TIEUL	G	77	FERME ESPOIR	QC




Government of Canada / Gouvernement du Canada

**Average Production by Breed based on Official - Supervised Records in Canada**

**2008 - 2017**

**GUERNSEY**



	Number of	Milk	Fat		Protein		BCA		
	Records	kg	kg	%	kg	%	Milk	Fat	Protein
2017	317	7,389	351	4.77	254	3.46	222	210	214
2016	351	7,086	331	4.69	241	3.42	214	199	205
2015	384	6,730	313	4.67	228	3.40	203	189	194
2014	370	6,759	315	4.69	231	3.43	205	191	197
2013	375	6,952	322	4.64	239	3.45	211	195	204
2012	374	6,831	313	4.60	234	3.44	207	190	200
2011	371	7,062	322	4.57	241	3.42	216	196	207
2010	357	6,891	310	4.51	235	3.43	208	187	200
2009	419	6,812	310	4.56	233	3.43	205	186	198
2008	415	6,820	305	4.51	234	3.45	208	186	200

<b>CANADIAN DAIRY NETWORK / RÉSEAU LAITIÉRIEN CANADIEN</b>																
<b>April/Avril 2019</b>																
<b>TOP 5 GUERNSEY HERDS BY LPI / 5 MEILLEURS TROUPEAUX GUERNSEY SELON L'IPV</b>																
<small>(minimum 10 active cows with official LPI) / (minimum de 20 vaches actives avec un IPV officiel)</small>																
Rank Rang	LPI IPV	No. Cows No. Vaches	Name of Farm / Owner Nom de la Ferme / Propriétaire	City Ville	Province	Milk Lait	Fat Gras	Protein Protéine	Fat % % Gras	Prot % % Prot	SCS CCS	CONF	MS SM	F&L P&M	DS PL	RP Cr
1	922	15	LINDRIAN FARMS	SURREY	BC	26	4	2	0.04	0.02	101.6	5.2	5.3	2.1	1.0	0.7
2	921	56	EBY MANOR FARM LTD.	WATERLOO	ON	171	7	7	0.01	0.02	100.3	3.3	3.2	1.9	1.1	0.6
3	878	44	COMFORT FARMS	ST ANNS	ON	-68	1	-1	0.05	0.02	105.4	3.3	3.0	1.8	1.1	-0.3
4	824	55	MAPLEHURST FARMS	LYNDEN	ON	-5	2	2	0.04	0.03	101.3	2.9	2.9	1.6	0.8	1.5

# EBY MANOR INC.



Pleased to receive our 4<sup>th</sup> Master Breeder Award at the 2019 Guernsey AGM.

We will soon be introducing 10% Golden Guernsey cream to our product list. Currently working on Guernsey cheddar. Hoping to have eggnog available for Christmas season.



A few of our udderly beautiful 2 year olds!



Jim & Ruth Eby  
519-664-2560  
info@ebymanor.ca

Eby Manor Inc.  
1174 Weeby Place  
RR 1, Waterloo, ON N2J 4G8  
www.ebymanor.ca

Ben & Sheri Eby  
519-664-2819





Daughter of Pilot, **BRUANNA FRANCES 12<sup>TH</sup> VG-85-2YR-AUS**  
 Photo: Dean Malcolm, Crazy Cow.com.au©

# LINDRIAN GRUMPY PILOT



0200GU00307 GRUMPY x GARRETT

<b>+950</b> GLPI	<b>104</b> SOMATIC CELL SCORE	<b>+8</b> CONFORMATION
<b>107</b> HERD LIFE	<b>105</b> CALVING ABILITY	<b>+8</b> MAMMARY SYSTEM

Source: CDN GEBV 19\*APR



**Daughter of PILOT**  
**BRUANNA FRANCES 12<sup>TH</sup> VG-85-2YR-AUS**  
 2019 Immediate Champion International Dairy Week  
 Owners: B & C Hayden, Pilton, Queensland, Australia



**Dam of PILOT**  
**LINDRIAN GARRETT PIPPY 465 EX-92-CAN**  
 4 Lactations: 70,461M 901F 5.5% 2616P 3.7% kg



**LINDRIAN GRUMPY PILOT**



[www.westgen.com](http://www.westgen.com)



[www.eastgen.ca](http://www.eastgen.ca)



[www.ciaq.com](http://www.ciaq.com)

[www.semex.com](http://www.semex.com)







# GOLDEN OPPORTUNITY SOUTH OF THE BORDER

## **Demand for A2/A2 confirmed Guernseys has been explosive South of the Border for the past 24 months!!**

Guernsey Marketing Service (GMS), a division of the American Guernsey Association (AGA), along with Global Guernsey Marketing is fielding dozens of inquiries for Guernseys each month. The consensus is:

1. We don't have enough Guernsey replacements to fill large orders.
2. Nearly all buyers are seeking A2/A2 Guernseys.
3. Fertility is high on buyer's wish lists.
4. A2/A2 commercial Guernseys are priced at substantial price premiums over other breeds in the same category.

## **Turning Challenges into Opportunities... (Making More Guernseys)**

Less than 2 years ago, the U.S. Top 20 genomic young sires were at a deficit (-) for Daughter Pregnancy Rate (DPR). As recently as 2016, the U.S. Guernsey population placed last for Productive Life (PL) and DPR among all major dairy breeds, according to the Council of Dairy Cattle Breeding. The AGA took swift action by increasing the importance of DPR to a whopping 15% of the Guernsey Production Type Index (PTI) Formula. The most recent April 2019 Sire Summary averaged the Top 20 genomically ranked young sires at +0.73 DPR. This radical improvement didn't happen based solely on a change in formula, but in conjunction with the creation of the Guernsey Gold Sires (GGS) young sire group, in cooperation with Select Sires. Additionally, ST Genetics and Hoard's Dairyman released several breed-leading high fertility bulls. Lastly, several young sires with low DPR have graduated to active status and breeders are voting for higher fertility bulls with their wallets.

## **Guernsey Market Expands...**

Several existing Guernsey breeders have had the ability to use the services of GMS as they shift their focus from milk-only income to diversification by selling:

1. Confirmed A2/A2 females for milk marketing efforts in Canada, U.S. and Mexico;
2. Show heifers;
3. High DPR, index or genomic genetics.

Previously, only high type Guernseys earned a premium whereas today there's a robust market for all three segments. A2 confirmed Guernseys have the most demand for new U.S. milk markets where current economics don't provide financial gain to pool high quality Golden Guernsey Milk in the U.S. Federal Milk Market.

## **Adding Cash Flow with Sexed Semen...**

Several herds have pledged to use substantially more sexed semen on all 1st and 2nd services. This makes economical sense when Guernsey bull calves typically sell for \$20.00 USD/\$25.00 Canadian compared to heifer calves under 1 year selling for no less than \$800 USD/\$1,050 Canadian. Even with the use of 3 units, the outcome is substantially in your favor. Herds will have more replacements to choose from for the future milking string and/or to sell for additional cash flow. Sexed semen quality has greatly improved in the past 3 years and herds like Hoard's Dairyman & Idle Gold have had +60% conception rates. More sexed semen use will result in more robust offerings by your A.I. companies.

## **Take advantage of this Golden Opportunity...**

*Pictured is one of a dozen new U.S. Registered Guernsey herds established over the past 2 years. The herd is owned by Amanda Connors & Myles Rawson in South Londonderry, Vermont. It was established with the investment of nearly 40 A2/A2 Guernseys from JensGold & Idle Gold in Wisconsin.*





MAPLEHURST PROVIDED ALL  
THESE ANIMALS FOR THE  
WESTERN ONTARIO 4-H  
JUDGING COMPETITION IN PARIS

MAPLEHURST LEGEND GLADYS  
(EX-92) - DAM OF GWEN

CONGRATULATIONS TO MARLIN BAUMAN ON PURCHASING TWO TOP 2 YEAR OLDS  
FROM OUR HERD, BOTH FROM EXCELLENT DAMS. MARLIN PURCHASED GLADYS' DAUGHTER  
MAPLEHURST TOBY GWEN WHO RECENTLY PARTICIPATED IN THE BREEDER'S CUP CONTEST.

HOME OF WORLD CLASS GENETICS WITH 16 EX, 44 VG, 7 GP  
ANIMALS & EMBRYOS FREQUENTLY FOR SALE.

*Maplehurst Farm*

Ken & Chris Forster & Family / Rob & Jocelyn Forster  
278 Hwy 52, Lynden, Ontario L0R 1T0  
Phone: 905-304-0131 Email: [holycow1952@live.ca](mailto:holycow1952@live.ca)  
[www.facebook.com/MaplehurstFarms/](http://www.facebook.com/MaplehurstFarms/)



# FEE SCHEDULE

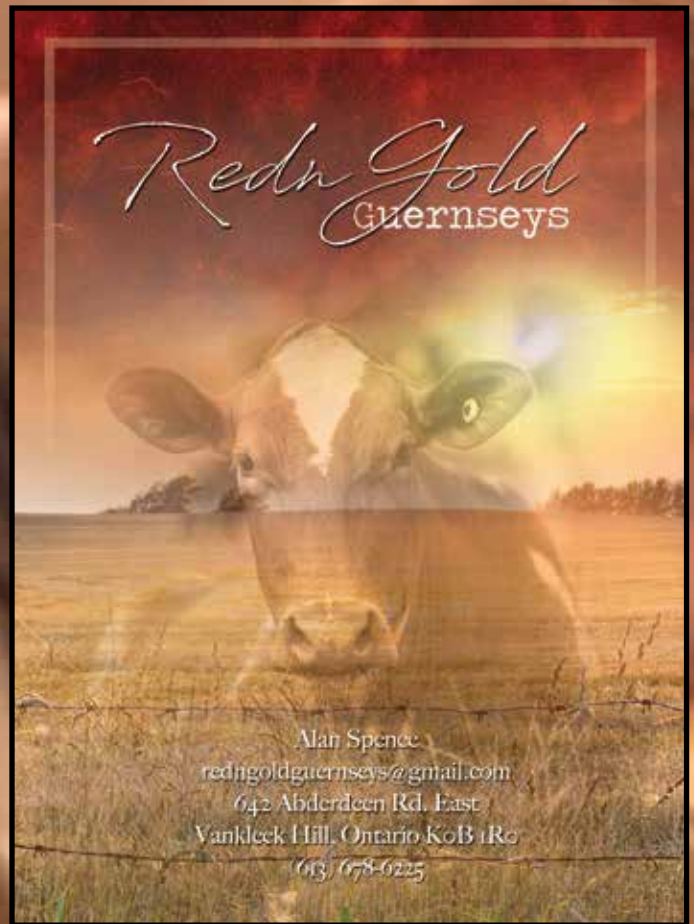
## MARCH 22, 2019

---

<b>Membership:</b>	<b>Fee</b>
Annual	\$85.00
<b>Registration:</b>	
0 to 3 months	\$15.00
3 to 6 months	\$18.00
6 to 12 months	\$40.00
12 to 24 months	\$50.00
24 months and over	\$60.00
Females 50% Purity or Less	\$11.00
Additional fee for non-members (No Extra Fee for <50% Animals)	\$25.00
Registration of Imported Animal	\$26.00
<b>Transfer:</b>	
Transfer of Ownership	\$25.00
Bulk Transfer (15+ animals)	\$10.00
Transfer within Family	\$10.00
Whole Herd Transfer within Family	\$250.00
<b>Embryo Registry Work:</b>	
Recovery	\$10.00
Freezing	\$5.00
Transfer (export only)	\$50.00
<b>Other Fees:</b>	
Duplicate Certificate	\$17.00
Registration of Lease	\$22.00
Registration of Prefix	\$22.00
Transfer of Prefix	\$22.00
Registration of Tattoo Letters	\$22.00
Transfer of Tattoo Letters	\$22.00
Extended Pedigree - 3 gen	\$20.00
Extended Pedigree - 4 gen	\$25.00







## **Wentworth Niagara Guernsey Picnic**

**July 20<sup>th</sup>, 2019**

**12:00 pm**

**Comfort Farms**

**Potluck Salads & Desserts.  
Everyone welcome - games for all ages.**

***Breeders Cup Results!***

# #2 GPA LPI SIRE AND A2



Dam of Indigo: EBY MANOR D L INDY EX-92-CAN, #1 Cow for GLPI at +1600, #2 Cow for GEBV Fat at +60  
4 Lactations: 39,389M 2370F 6.0% 1491P 3.8% kg Photo: Frank Robinson

## EBY MANOR INDIGO

0200GU00122

LIGHTNING x DOUBLE L



**+1242** GPA LPI

**102** HERD LIFE

**101** SOMATIC CELL SCORE

**103** MILKING SPEED

**+6** CONFORMATION

**+9** MAMMARY SYSTEM

Source: CDN GPA 19\*APR

**SEMEX**  
Genetics for Life®

[www.semex.com](http://www.semex.com)

**WestGen**

[www.westgen.com](http://www.westgen.com)

**EastGen**

[www.eastgen.ca](http://www.eastgen.ca)

**ciaq**

[www.ciaq.com](http://www.ciaq.com)