

Canadian
Guernsey

Guernsey

NEWS

WINTER 2025





Season's Greetings,
Happy Holidays,
and All the Best
for a Prosperous
New Year.

Table OF CONTENTS

03

Information Sheet for New Guernsey Members

04

President's Ramble

05

Invitation to the 2026 Annual General Meeting

06

Field Representative's Reflections

08

2025 National Guernsey Show Results

12

Behind the Scenes at the
2025 National Guernsey Show

14

Registrar's Message
Welcome New Members

15

4-H Awards

16

Producer Story: Lostst Savanna Farm

18

Production Records

20

Classification Schedule

21

Invest in Gold: The Future Is Guernsey

22

2025 Guernsey Recap

24

2026 Advertising Schedule

Information Sheet

FOR GUERNSEY MEMBERS

20 Corporate Place, Box 610, Brantford, ON, N3T 5R4
Phone: 1-855-756-8300, Fax: 519-756-3502
Website: www.guernseycanada.ca

ADMINISTRATION:

Linda Markle, Administrative Coordinator:
Phone: 1-855-756-8300, ext. 272
Email: guernseyinfo@holstein.ca

FIELD REPRESENTATIVE:

Russell Gammon
Phone: 226-751-3618
Email: rggammon1@gmail.com

REGISTRAR & CONTACT FOR MEMBERSHIP, REGISTRATIONS AND TRANSFERS:

Isabelle Passaretti
Phone: 1-855-756-8300, ext. 223
Email: lpassaretti@holstein.ca

FIELD SERVICE BUSINESS PARTNERS:

MB, SK, AB, BC
Toby Kleinsasser
Email: tkleinsasser@holstein.ca

NB, NS, PEI, NL
Toby Kleinsasser
Email: tkleinsasser@holstein.ca

VISIT THE CANADIAN GUERNSEY WEBSITE WWW.GUERNSEYCANADA.CA FOR:

- Current Director Listing
- Fee Schedule
- By-Laws
- Create a web account with our Registrar to proceed with online services, order DairyTrace tags, view herd management or classification reports
- Breed History
- Animal Inquiry
- Applications: Membership, Registrations and Transfers
- Newsletters, Updates, Journals, etc.

CONTACTS

American Guernsey Association: www.usguernsey.com
Milk Recording: Lactanet: www.lactanet.ca
Classification: Holstein Canada: www.holsteincanada.ca

AI UNIT WEBSITES

CIAQ: www.ciaq.com
EastGen: www.eastgen.ca
Genex: www.genexcanada.ca
Select Sires: www.selectsiresgenerations.com
Semex: www.semex.com
ST: www.stgen.ca
WestGen: www.westgen.com

BOARD OF DIRECTORS

President: Paul MacLeod
Vice President: Bruce Fuller

Board of Directors:

Christian Kaiser
Jim Eby
Brad Comfort
Colin Comfort
Scott Gordon
Liesl Thiessen
Morris Bartlett

GUERNSEY CATTLE BREEDERS ASSOCIATION OF ONTARIO

President: Morris Bartlett
Vice President: Marlin Martin

Board of Directors:

Ben Eby
Colin Comfort
Kyle Horst

BREED IMPROVEMENT COMMITTEE

Chair: Christian Kaiser

Committee Members:

Jim Eby
Scott Gordon
Kyle Horst
Russell Gammon
Paul MacLeod

FOLLOW US ON FACEBOOK

 **Canadian Guernsey Association**

President's Ramble

It's been a year of contrasts — great weather for some, and more challenging conditions for others. I hope everyone has secured enough feed for the winter ahead.

We were fortunate to enjoy beautiful fall weather for the National Show. It was wonderful to see new exhibitors participating — and even more exciting to see some of them win their classes. It's always a pleasure to visit with these newcomers and encourage them to stay involved.

Congratulations to all our participants, and a special shout-out to Mt. Elgin Dairy on their impressive achievement — Maplehurst Pilot Treat, now a 4-time National Show Champion! Treat also placed second in her class at the World Dairy Expo — an outstanding accomplishment.

Your board continues to refine and update the Guernsey awards program, aiming to take breed recognition and improvement to the next level of relevance and impact. As Russell would say, "Onward and upward!"

It's also encouraging to see the continued strong interest in the Guernsey breed. Sales remain solid — a reminder that we truly do need more good ones! If you're using genomic testing, please help spread the word so we can all share in the benefits and progress together.

In closing, I want to extend my sincere thanks to our dedicated staff for their professionalism and hard work throughout the year.

Here's to a successful 2026 — we are fortunate to live in one of the best countries in the world.

Cheers,

- Paul MacLeod.

National President

-A-
\\VERY//
MERRY
CHRISTMAS
—&—
HAPPY NEW YEAR
--





**CANADIAN GUERNSEY ASSOCIATION &
GUERNSEY CATTLE BREEDERS OF ONTARIO**

invite you to save the date for our:

ANNUAL GENERAL MEETING

Thursday March 26, 2026

Planning is under way for the AGM.

More information to come in the New Year



Field Representative's Reflections

PROGRESS BEING MADE! SUCCESS GROWS!!

Autumn 2025 is whipping at a stunning and stimulating pace and we have some great moments to celebrate!

You'll read about results of our National Show in Ancaster elsewhere in this edition! Numbers bumped up a tick and we welcomed a couple of first-time exhibitors who both had a successful day!

This show happens because of the sacrifice of time and energy that each exhibitor makes! What a thrill to see Maplehurst Pilot Treat capture her fourth consecutive National Grand Championship for Mount Elgin Dairy Farm Ltd.! Congrats to her breeders, the Forster Family at Maplehurst too!

The audience watching the show was good and Jeff Stephens applied serious consideration to his placings. We did have livestreaming thanks to Cowsmopolitan so that a wider audience was part of the process. Our admin team and their fellow employees from Holstein Canada did a terrific job of organization and filling so many roles on show day! Cooperation between breeds

bears so much fruit! Can you imagine that on August 17, 2025 the All Breeds Classification program celebrated its 20th Anniversary?! 20th! The combined efforts of Breed Associations have led to so much progress!

In early September I had the privilege of traveling to Australia on business with another dairy breed. While there I had the opportunity of seeing a number of members of the well-known Brookleigh herd at the Adelaide Royal Show. I also briefly met Josh Smith from Tasmania who was a Guernsey judge at this large-scale event. An additional gift was visiting the First Love Guernsey herd of Cassandra Custance and family. The farm is located in the scenic Gippsland region of Victoria, East of Melbourne. Cassandra and team milked a significant number of Guernsey's in a herd also populated with Holsteins and a handful of Jerseys. First Love is one of the stops on the tour program associated with the World Conference program next February/March. Those who are on the tour segment in Victoria will be treated to an amazing visit at First Love! Cassandra is full of passion for her herd and dairying and knows her cows inside out! She is thoroughly pumped about meeting the tour attendees and talking Guernsey's and showing them her wonderful cows and heifers!

World Guernsey Cattle Federation 18th World Guernsey Conference Australia 2026

Key Dates:

PRE-CONFERENCE TOUR: Starts February 26, 2026, in Melbourne, Victoria

WGCF CONFERENCE: March 9-12, Devonport, Tasmania

POST-CONFERENCE TOUR - March 12-23, covering NSW & QLD

The 2026 WGCF conference & tour program for Australia is now accepting bookings!
Info available at - <https://www.worldguernseys.com/>

We are ramping up our social media presence again after a hectic six weeks in September and first half of October. We continue to receive expressions of interest in the breed and address them in the most appropriate ways.

Take Advantage of Genotyping Support

We encourage all members to take full advantage of the financial assistance available for genotyping your animals. The Association has recently retrieved 117 stored Microsatellite test samples and had them re-tested using DNA technology. These additional results will increase the number of animals contributing to genomic evaluations and is an important step that strengthens the genetic base and improves the accuracy of evaluations across the breed.

Our breed made an impressive start with this initiative, and participation has grown significantly—with over 500 animals already tested. Now is the perfect time to catch up on genotyping any younger animals that have not yet been tested and to take advantage of the financial support offered by the Canadian Guernsey Association.

Financial Assistance Available:

For herds participating in either Milk Recording (MR) or Classification:

- \$20 credit per cow
- \$15 credit per heifer

For herds participating in both MR and Classification:

- \$33 credit per cow
- \$15 credit per heifer

Let's continue building a stronger, more data-driven future for our breed—one genotype at a time.

On the International level the World Guernsey Cattle Federation has been supporting efforts to move along and expand work on evaluations at a global level. Progress is being made. Progress is often incremental building on previous successes and learning as we grow. Let us be encouraged by any progress we experience and be agents of even more forward motion! It is a great time to be working with Guernseys!

Let us know how we can help you to make progress with Guernseys too!

- Russell Gammon

Fieldman



2025 National Guernsey Show Results

2. Junior Showmanship

Rank	Animal	Exhibitor	Registration#
1	DON HAVEN JAVA VEGAS	Scott Gordon	GUCANF14965129
2	DON HAVEN AUDREY VANDAL	Scott Gordon	GUCANF14965126
3	DON HAVEN GOLDMINE VIVID	Scott Gordon	GUCANF14965125
4	COMFORT FARMS SIMON ADA	Comfort Farms	GUCANF15128278
5	COMFORT FARMS CADET PARSLEY	Comfort Farms	GUCANF15128276
6	Lillies Jamie Toby Keith	Ronnie, Heidi & MarLee Dunster	CANF14749449

3. Spring Heifer

Rank	Animal	Exhibitor	Registration#
1	HIDDEN LANE WIPEOUT PANSY	Kyle Horst	GUCANF14699714
2	DON HAVEN JAVA VITA	Scott Gordon	GUCANF15375209
3	MAR-LEY ANDRE STAR	Marlin Martin	GUCANF15213523
4	DON HAVEN DJ VARINA	Scott Gordon	GUCANF14965141
5	HIDDEN LANE PELOTON CONTENDER	Kyle Horst	GUCANF14699713
6	Eby Manor Hurricane Lolypop	James Eby	CANF15189024
7	COMFORT FARMS SIMON ADA	Comfort Farms	GUCANF15128278

4. Winter Heifer

Rank	Animal	Exhibitor	Registration#
1	Eby Manor Denzel Fritter	James Eby	CANF14720362
2	MAR-LEY VIKING SECRET	Marlin Martin	GUCANF15213519
3	Prinsville Java Gem	David Prinzen	GUCANF15124896
4	COMFORT FARMS CADET PARSLEY	Comfort Farms	GUCANF15128276

5. Fall Heifer

Rank	Animal	Exhibitor	Registration#
1	COMFORT FARMS W ALLINA	Comfort Farms	GUCANF15128270
2	DON HAVEN JAVA VEGAS	Scott Gordon	GUCANF14965129
3	Eby Manor Jrue Edna	James Eby	CANF14720354

6. Female - Spring and Summer Yearling

Rank	Animal	Exhibitor	Registration#
1	COMFORT FARMS CHECKMATE APP	Comfort Farms	GUCANF14211868
2	DON HAVEN AUDREY VANDAL	Scott Gordon	GUCANF14965126
3	DON HAVEN GOLDMINE VIVID	Scott Gordon	GUCANF14965125
4	Lillies Jaime Toby Keith	Ronnie, Heidi & MarLee Dunster	CANF14749449
5	Eby Manor Denver Sylvia	James Eby	CANF14720340

7. Female - Fall and Winter Yearling

Rank	Animal	Exhibitor	Registration#
1	PRINSVILLE CARVER GEM	David Prinzen	GUCANF14965925
2	COMFORT FARMS PHARMER JENNA	Comfort Farms	GUCANF14211861
3	Mar-Ley Michelan Itzy	Ronnie, Heidi & MarLee Dunster	CANF14822831
4	Eby Manor Carver Whirly	James Eby	CANF14720321

Junior Champion Female

Rank	Animal	Exhibitor	Registration#
Ch	PRINSVILLE CARVER GEM	David Prinzen	GUCANF14965925
Res	COMFORT FARMS W ALLINA	Comfort Farms	GUCANF15128270

8. Junior Herd - Group of 3 Junior females.

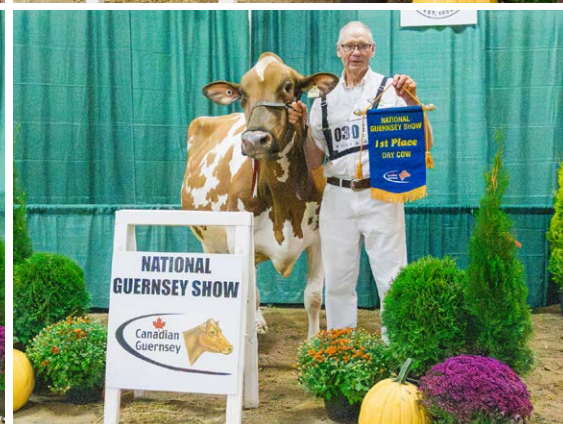
Rank	Animal	Exhibitor	Registration#
1	Comfort Farms	Comfort Farms	COMFORT FARMS JR
2	Don Haven	Scott Gordon	DON HAVEN JR
3	Eby Manor	James Eby	EBY MANOR JR

9. Dry Cow

Rank	Animal	Exhibitor	Registration#
1	EBY MANOR INDIGO EDEN	Eby Manor Farms Inc	GUCANF14028722
2	COMFORT FARMS TK SUNSHINE	Comfort Farms	GUCANF14211835
3	Maplehurst Drone Lego	Ronnie, Heidi & MarLee Dunster	CANF13900627

10. Female - 2 year old

Rank	Animal	Exhibitor	Registration#
1	Eby Manor Tsunami Sundance	James Eby	CANF14720311
2	SPRINGHILL JRUE JOLENE	Mt. Elgin Dairy Farms	3265818573
3	DON HAVEN JCP VACATION	Scott Gordon	GUCANF14173432
4	COMFORT FARMS PH PHOEBE	Comfort Farms	GUCANF14211840



11. Female - 3 year old

Rank	Animal	Exhibitor	Registration#
1	SPRINGHILL JD FESTIVE	Mt. Elgin Dairy Farms	3242487236
2	HARTDALE SPRINGHILL JCP CABO	Mt. Elgin Dairy Farms	3242487286
3	Eby Manor Theo Sophie	James Eby	CANF14028745
4	DON HAVEN JCP VIBRANT	Scott Gordon	GUCANF14173421
5	Eby Manor JC Penney Wynona	James Eby	CANF14028746
6	COMFORT FARMS JAVA ADELE	Comfort Farms	GUCANF14211827
7	Lillies Prancer Pharmer	Ronnie, Heidi & MarLee Dunster	CANF14352625

12. Female - 4 year old

Rank	Animal	Exhibitor	Registration#
1	COMFORT FARMS PILOT MISS MOLLY	Comfort Farms	GUCANF12936178
2	COMFORT FARMS BROGDON JULIET	Comfort Farms	GUCANF12936161

13. Female - 5 year old

Rank	Animal	Exhibitor	Registration#
1	MAPLEHURST PILOT TREAT	Mt. Elgin Dairy Farms	GUCANF12292464
2	Eby Manor Novak Fyre	James Eby	CANF13520635
3	COMFORT FARMS LUMEN	Comfort Farms	GUCANF11902324
4	COMFORT FARMS LAMBEAU JENESSA	Comfort Farms	GUCANF12936146

Grand Champion Female

Rank	Animal	Exhibitor	Registration#
Ch	MAPLEHURST PILOT TREAT	Mt. Elgin Dairy Farms	GUCANF12292464
Res	Eby Manor Tsunami Sundance	James Eby	CANF14720311

14. Breeder's Herd

Rank	Animal	Exhibitor	Registration#
1	Comfort Farms	Comfort Farms	COMFORT FARMS
2	Eby Manor	James Eby	EBY MANOR
3	Don Haven	Scott Gordon	DON HAVEN

15. Progeny of Dam

Rank	Animal	Exhibitor	Registration#
1	Eby Manor Theo Sophie	James Eby	CANF14028745
2	DON HAVEN AUDREY VANDAL	Scott Gordon	GUCANF14965126
3	DON HAVEN JAVA VITA	Scott Gordon	GUCANF15375209

Best Udder

Rank	Animal	Exhibitor	Registration#
1	Eby Manor Tsunami Sundance	James Eby	CANF14720311
1	SPRINGHILL JD FESTIVE	Mt. Elgin Dairy Farms	3242487236
1	COMFORT FARMS PILOT MISS MOLLY	Comfort Farms	GUCANF12936178
1	MAPLEHURST PILOT TREAT	Mt. Elgin Dairy Farms	GUCANF12292464

Junior Exhibitor

Rank	Exhibitor
1	BYDAND FARM / SCOTT GORDON (#7)
2	COMFORT FARMS (#5)
3	EBY MANOR FARM INC / JAMES EBY (#8)

Junior Breeder

Rank	Breeder
1	DON HAVEN
2	COMFORT FARMS
3	EBY MANOR

Premier Exhibitor

Rank	Exhibitor
1	COMFORT FARMS (#5)
2	EBY MANOR FARM INC / JAMES EBY (#8)
3	MT. ELGIN DAIRY FARMS (#2761)

Premier Breeder

Rank	Breeder
1	COMFORT FARMS
2	EBY MANOR
3	DON HAVEN



THANK YOU TO OUR *Sponsors*



BRUCE AND SHERRY
TELFER



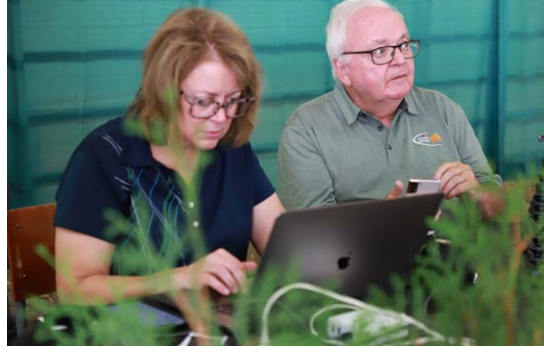
AYR FARMERS
MUTUAL INS. CO



BEHIND THE SCENES AT THE 2025 National Guernsey Show



BEHIND THE SCENES AT THE
2025 National Guernsey Show



Registrar's Message

Happy Winter to all!

As we bundle up and try to stay warm through these colder months, I thought it would be a great time to share a quick update.

As of November 1, we have completed 144 classifications and processed 289 registrations. Stats are slightly lower compared to this time last year however we are confident we will see these numbers rise!

We were thrilled with the excellent turnout at this year's National Show, which surpassed last year's entries! It was wonderful to see so many familiar faces and dedicated supporters of the breed — thank you for making it such a success.

We're always on the lookout for seasonal cover photos! This winter, grab your camera (and your Guernsey) and get creative with some festive Christmas decorations. Submit your photos to guernseyinfo@holstein.ca for a chance to be featured on our cover.

If you have any questions or need assistance, don't hesitate to contact me by email at: ipassaretti@holstein.ca

Warm regards,

- *Isabelle Passaretti*
Registrar

Welcome
NEW MEMBERS

JERRY SUDERMAN

SUDERMAN
Spallumcheen, BC

SOLOMON MATHESON

MATHESON
Kars, NB

JACLYN BRUBACHER

LYNDALE
Elmira, ON



4-H Awards

The Canadian Guernsey Association is pleased to support 4-H and we thank them for completing their 4-H project using a registered Guernsey.

If you or someone you know is participating in 4-H with Guernsey calves, please let us know by the end of November of the current year by submitting the application form on the website www.guernseycanada.ca / **Application**. A special award will be presented from applications received.





Lost Savanna Farm

VANCOUVER ISLAND, BRITISH COLUMBIA

We are a first-generation small family farm. Kris and Brittany along with our 5 young children (Layla 9, Lily 7, Eva 5, Luka 3 and baby Jeremiah) are involved and contribute to different aspects of the farm business.

We are located in Black Creek which is in the Comox Valley on beautiful Vancouver Island in British Columbia. We're in a temperate rainforest with mild wet winters and warm dry summers. We purchased raw land in 2014 and have spent a significant amount of time improving the original field and clearing for new pastures.

Before we were married, we both competed in competitive sports and we sought nutrient-dense food for performance. Inspired by Dr. Weston A. Price's research, we recognized that pasture-based livestock systems delivered the exceptional nutrition and flavor we were looking for. However, finding this food locally proved difficult, so we decided to start our own farm to produce the food ourselves. We also wanted to start something that our children could end up continuing. Now, more than 10 years later, we have found immense joy in working with our hands each day, laboring from dawn to dusk to bring our dreams to life, and instilling in our children the value and rewards of dedication and hard work.

Small scale direct-to-consumer dairy farming was the original vision for the farm but the challenges of regulation became

apparent to us early. For the last 8 years our farm has sold chicken, pork and beef through a meat box program while we navigated planning, building and starting our creamery. The meat box program is still running today but at a smaller scale than it was a few years ago to keep the focus on dairy. We have tried almost everything on our farm from sheep, rabbits, beef cows, pastured broiler, egg production, dairy cows and pigs. We find that the dairy cows and the pigs complement each other well, as the pigs can consume any creamery waste which keeps the grain cost for the pigs down. This was a much more common style of farm 50-100 years ago.

The desire for delicious and nutritious food led us into soil science and how rich, healthy soil creates healthy plants, which creates healthy animals, and results in healthy people. Our goal is to use organic and regenerative methods to build soil which in turn nourishes us and our customers. The soil food web under our cows' feet is fascinating and something humans have barely scratched the surface of understanding. We want to work with the land rather than against it and leave it in a better state than when we started for future generations.

We originally became aware of Guernsey's with our research into dairy breeds and specifically A2A2 milk. With other forms of milk all being A2A2, including human breast milk,



this “genetic mutation” that occurred in most cow breeds was something we wanted to avoid. This left us with only a few breeds to choose from which had a high percentage of A2A2. After visiting a farm in Ontario with Guernsey’s on pasture and trying the milk, we were set on Guernsey’s. It was the best milk we’d ever tasted. The gentle disposition of Guernsey’s and their beauty were definitely a bonus as well.

There were no Guernsey dairies on Vancouver Island at the time, and only a few farms in BC with Guernsey’s at all so our search began. Brittany is from Ontario so on another trip out there, we found a Guernsey farm retiring (Warrindale) and were able to bring our first Guernsey’s out to BC in 2015. Other Guernsey stock came from Rozelyn and most recently from Promise Valley, Hidden Lane, and Mar-Ley. We are very thankful for farms that helped us increase our stock and of course the help of the Guernsey Association for helping us source more Guernsey’s, originally Rob Forster and currently Russell Gammon.

Around 5 years ago we hit a crossroads in our farm where we had to make a choice to either pursue meat processing which would allow us to produce enough to meet customer demand and make a living, or pursue dairy processing as we would be too small to put our milk on a truck. Our desire to have a dairy persisted, and seeing an increased demand in the marketplace for local grass-fed dairy which was not being filled, we thought this was the best route for our family.

We are butter lovers and after making Guernsey butter for ourselves we knew others would be interested. Lots of the

grass-fed butter in stores comes from the other side of the world like New Zealand and France but it doesn’t have to. We can produce quality grass-fed butter in Canada, especially right here on Vancouver Island with our temperate climate. We currently market our butter directly to the consumer but are exploring other options such as small specialty stores.

Guernsey’s are good grazers, produce delicious A2A2 milk, have high butterfat content, and the color of the butter really comes through when they are grazing due to high beta-carotene content. We call it “grass-fed you can see”. The butter has been very well received with great reviews. We sell it in log form. One customer said they had been previously using a butter mule to bring in butter from Ireland and France through the U.S. and after trying Lost Savanna butter said: “This is fresh, high level AND way better!”.

What is next? We have some rough ideas for agritourism and a farm store but we’re focusing on some other fermented dairy products at the moment. Our children are interested in making ice cream so that could be an option down the road. It’s a blessing to have as a family vision where we can all work together.

Although we started our farming journey with self-study in books and courses, we found nothing compared to physical experience and gleaning wisdom from others. Being a 1st generation farm with a steep learning curve, we’ve been grateful for the help from friends and family, current farmers and retired farmers along the way.

Production Records

LACTATION RECORDS COMPLETED BETWEEN JULY 2025 TO OCTOBER 2025 ABOVE THE NATIONAL BCA COMPOSITE

Yearlings		Class	Yr	Mth	M	F	%F	P	%P	M	F	P	Comp BCA	Owner		
GUCANF14028755	EBY MANOR JAGUAR CLEMENTINE	GP	82	1	11	7159	328	4.6	237	3.3	265	243	247	755	EBY MANOR LTD, ON	
GUCANF14593112	MAR-LEY CRAIG LIBERTY	GP	82	1	11	6195	362	5.8	246	4	228	264	254	746	MARLEY FARMS INC, ON	
GUCANF14593113	MAR-LEY HELIOS ICECUBE	GP	83	1	11	7129	306	4.3	221	3.1	263	223	228	714	MARLEY FARMS INC, ON	
GUCANF14578107	RIGGFOOT JCPENNY TIMBIT	GP	82	1	10	6167	335	5.4	232	3.8	222	241	234	697	ROBERT & ANNE SKIDMORE, ON	
GUCANF14028758	EBY MANOR CRAIG EVELYN	GP	83	1	10	6354	308	4.8	220	3.5	237	228	232	697	EBY MANOR LTD, ON	
GUCANF14211833	COMFORT FARMS COPPER MAXINA	GP	80	1	10	6253	291	4.7	207	3.3	233	219	216	668	COMFORT FARMS LTD, ON	
GUCANF14028753	EBY MANOR JAGUAR EMMA	GP	82	1	11	6103	287	4.7	214	3.5	225	211	221	657	EBY MANOR LTD, ON	
GUUSAF97014765	INDIAN ACRES C PLAY TO WIN			1	11	6085	287	4.7	231	3.8	216	204	231	651	FULLER VIEW FARM, MUSQIE VALLEY FARMS, J. FUL, NS	
GUCANF14593118	MAR-LEY TSUNAMI DELIGHT	GP	82	1	11	6481	303	4.7	218	3.4	219	206	208	633	MARLEY FARMS INC, ON	
GUCANF14028765	EBY MANOR WINNER			1	9	5926	283	4.8	214	3.6	209	201	212	622	EBY MANOR LTD, ON	
GUCANF14699637	HIDDEN LANE HURRICANE ABBY	VG	85	1	9	5010	273	5.5	196	3.9	178	196	196	570	HIDDEN LANE DAIRY INC., ON	
Jr. 2 Yr Old		Class	Yr	Mth	M	F	%F	P	%P	M	F	P	Comp BCA	Owner		
GUCANF14028748	EBY MANOR INDIGO WAVERLY	GP	82	2	0	9797	392	4	293	3	354	282	296	932	EBY MANOR LTD, ON	
GUCANF120990121	CRÄTMEDOR VENGEANCE 121	GP	81	2	2	8162	415	5.1	291	3.6	291	292	291	874	ENTREPRISE FAMILIALE KAISER INC, QC	
GUCANF14291741	COULEE CREST BEAU KLOEY	GP	84	2	0	6954	364	5.2	260	3.7	236	249	248	733	MARLEY FARMS INC, ON	
GUCANF14291748	COULEE CREST JAVAP LEXUS	GP	84	2	2	7172	345	4.8	233	3.2	252	241	231	724	MARLEY FARMS INC, ON	
GUCANF14291753	MAR-LEY POPCORN	G	75	2	2	6501	345	5.3	245	3.8	232	243	245	720	MARLEY FARMS INC, ON	
GUCANF13897163	BEAVERWOOD MACES JOYFUL			2	4	6738	361	5.4	244	3.6	222	238	226	686	BEAVERWOOD FARMS INC., NB	
GUCANF14291757	MAR-LEY KANDYMAN APPLE	G	77	2	1	6833	309	4.5	237	3.5	237	213	230	680	MARLEY FARMS INC, ON	
GUCANF14291756	MAR-LEY HELIOS FROSTY	G	75	2	2	7247	314	4.3	231	3.2	245	213	219	677	MARLEY FARMS INC, ON	
GUCANF14173433	DON HAVEN KAKADU VIRGO	GP	81	2	1	6175	352	5.7	231	3.7	204	235	214	653	SCOTT GORDON, ON	
GUCANF14173434	DON HAVEN TSUNAMI VINDALOO	VG	86	2	0	6362	271	4.3	219	3.4	225	195	220	640	SCOTT GORDON, ON	
GUCANF14428264	BEAVERWOOD CHECKMATE KASSIE			2	0	5987	294	4.9	234	3.9	206	203	227	636	BEAVERWOOD FARMS INC., NB	
GUCANF14211835	COMFORT FARMS TK SUNSHINE	GP	81	2	0	5740	268	4.7	221	3.9	209	194	226	629	COMFORT FARMS LTD, ON	
GUCANF14593114	MAR-LEY CHECKMATE SUSIE	F	68	2	0	6781	255	3.8	219	3.2	230	173	209	612	MARLEY FARMS INC, ON	
GUCANF13897170	BEAVERWOOD MACE KHLOE			2	2	5925	261	4.4	211	3.6	210	185	211	606	BEAVERWOOD FARMS INC., NB	
GUCANF14028751	EBY MANOR JAGUAR SARAH	GP	81	2	1	5886	269	4.6	196	3.3	212	192	198	602	EBY MANOR LTD, ON	
GUCANF14428254	BEAVERWOOD MACE KATHRYN			2	3	5803	256	4.4	202	3.5	190	167	185	542	BEAVERWOOD FARMS INC., NB	
GUCANF14211837	COMFORT FARMS TK LENA	G	72	2	1	4854	239	4.9	181	3.7	162	160	171	493	COMFORT FARMS LTD, ON	
GUCANF14211831	COMFORT FARMS NAV. MADONNA	G	78	2	2	4911	219	4.5	179	3.6	168	149	172	489	COMFORT FARMS LTD, ON	
Sr. 2 Yr Old				Class	Yr	Mth	M	F	%F	P	%P	M	F	P	Comp BCA	Owner
GUCANF14291750	MAPLEHURST JAVAP WHISTLE	GP	80	2	6	9377	403	4.3	301	3.2	298	255	269	822	MARLEY FARMS INC, ON	
GUCANF14028729	EBY MANOR INDIGO FLARE	GP	83	2	11	8160	390	4.8	282	3.5	269	252	261	782	EBY MANOR LTD, ON	
GUCANF14291735	MAPLEHURST DRONE LILY	VG	85	2	10	7869	402	5.1	288	3.7	251	251	257	759	MARLEY FARMS INC, ON	
GUCANF13897175	BEAVERWOOD JAVA KARLEE			2	7	7957	364	4.6	273	3.4	250	228	242	720	BEAVERWOOD FARMS INC., NB	
GUCANF14211829	COMFORT FARMS LOGO ELLURA	GP	83	2	7	6310	315	5	220	3.5	202	201	198	601	COMFORT FARMS LTD, ON	

Jr. 3 Yr Old		Class	Yr	Mth	M	F	%F	P	%P	M	F	P	Comp BCA	Owner	
GUCANF13900612	MAPLEHURST LATIMER ABSOLUTE	GP	80	3	4	9009	430	4.8	329	3.6	275	259	281	815	HIDDEN LANE DAIRY INC., ON
GUCANF13799494	FULLER VIEW BEAU FORTUNE	VG	87	3	2	7845	457	5.8	312	4	243	277	271	791	FULLER VIEW FARM, MUSQIE VALLEY FARMS, J. FUL, NS
GUCANF13882590	BEAVERWOOD MACES JEAN MARIE			3	3	8372	400	4.8	303	3.6	268	250	273	791	BEAVERWOOD FARMS INC., NB
GUCANF13520676	EBY MANOR COIN WANDA	VG	85	3	4	8888	374	4.2	288	3.2	285	235	259	779	EBY MANOR LTD, ON
GUCANF13897146	BEAVERWOOD MACES JOANNE			3	4	8958	369	4.1	332	3.7	274	221	284	779	BEAVERWOOD FARMS INC., NB
GUCANF13900633	MAPLEHURST DRONE SEAH	VG	86	3	2	8131	402	4.9	288	3.5	252	244	250	746	MARLEY FARMS INC, ON
GUCANF14028718	EBY MANOR INDIGO LICORICE			3	1	8215	380	4.6	251	3.1	268	244	230	742	EBY MANOR LTD, ON
GUCANF14028723	EBY MANOR THEO WISCONSIN	GP	80	3	1	7635	419	5.5	278	3.6	238	257	244	739	EBY MANOR LTD, ON
GUCANF12936169	COMFORT FARMS JAGUAR SHAENA	GP	81	3	3	8059	361	4.5	256	3.2	251	221	225	697	COMFORT FARMS LTD, ON
GUCANF13842805	DON HAVEN INDIGO VIRTUE	VG	85	3	4	7452	415	5.6	281	3.8	219	241	232	692	FULLER VIEW FARM, MUSQIE VALLEY FARMS,& DEREK ISENER, NS
GUCANF13882588	BEAVERWOOD LAKODAS JELLY-BEAN			3	3	6323	363	5.7	262	4.1	204	231	238	673	BEAVERWOOD FARMS INC., NB
GUCANF14028715	EBY MANOR LIGHTNING STAR-BURST	GP	83	3	3	7240	335	4.6	249	3.4	234	213	226	673	EBY MANOR LTD, ON
GUCANF12936178	COMFORT FARMS PILOT MISS MOLLY	GP	82	3	5	7617	356	4.7	282	3.7	218	202	227	647	COMFORT FARMS LTD, ON
GUCANF14028722	EBY MANOR INDIGO EDEN	VG	85	3	1	6538	333	5.1	221	3.4	204	204	194	602	EBY MANOR LTD, ON
GUCANF13897157	BEAVERWOOD THEOS JULILLY			3	2	6451	322	5	241	3.7	188	187	198	573	BEAVERWOOD FARMS INC., NB
GUCANF12936175	COMFORT FARMS COPPER MELODI	GP	82	3	5	5507	243	4.4	200	3.6	167	145	171	483	COMFORT FARMS LTD, ON
GUCANF14211816	COMFORT FARMS JAGUAR MARIEL	G	75	3	3	5176	250	4.8	187	3.6	150	144	152	446	COMFORT FARMS LTD, ON

Sr. 3 Yr Old		Class	Yr	Mth	M	F	%F	P	%P	M	F	P	Comp BCA	Owner	
GU840F3209615577	JENS GOLD BUILT CECILY	GP	83	3	10	10415	525	5	373	3.6	292	293	294	879	HIDDEN LANE DAIRY INC., ON
GUUSAF97011470	LAESCHLAND LEGEND SHEBA	VG	86	3	8	9392	462	4.9	315	3.4	272	266	256	794	HIDDEN LANE DAIRY INC., ON
GUCANF12936157	COMFORT FARMS PREAKNESS	GP	82	3	11	7472	342	4.6	247	3.3	220	198	204	622	COMFORT FARMS LTD, ON
GUCANF12936158	COMFORT FARMS COPPER SUNRISE	GP	80	3	7	7096	295	4.2	237	3.3	220	181	206	607	COMFORT FARMS LTD, ON

4 Yr Old		Class	Yr	Mth	M	F	%F	P	%P	M	F	P	Comp BCA	Owner	
GUCANF13253910	BEAVERWOOD DAWSONS HELEN			4	5	10110	422	4.2	331	3.3	304	248	281	833	BEAVERWOOD FARMS INC., NB
GUCANF13520643	EBY MANOR DRONE WYNTER	VG	88	4	4	8737	432	4.9	295	3.4	265	259	252	776	EBY MANOR LTD, ON
GUCANF13253911	BEAVERWOOD ROYALS HELPER			4	6	9250	407	4.4	325	3.5	270	233	268	771	BEAVERWOOD FARMS INC., NB
GU840F3240477092	PRAIRIE MOON L ALOYA	G	78	4	5	9167	421	4.6	300	3.3	254	230	233	717	MARLEY FARMS INC, ON
GUCANF13253912	BEAVERWOOD INDIGOS HULA			4	4	7887	367	4.7	280	3.5	239	220	239	698	BEAVERWOOD FARMS INC., NB
GUCANF120187946	CRĂMEDITOR TK 7946 LYLY	VG	85	4	2	8719	398	4.6	316	3.6	239	216	243	698	ENTREPRISE FAMILIALE KAISER INC, QC
GUCANF13882561	BEAVERWOOD RUSSELL HOPEFUL			4	2	7890	406	5.2	280	3.5	232	232	232	696	BEAVERWOOD FARMS INC., NB
GUCANF13594831	SPRING ROSE LIBIDO DAWN	GP	80	4	4	7858	380	4.8	286	3.6	227	216	233	676	AARON HENHOEFFER, ON
GUCANF13882565	BEAVERWOOD BEAVER HALLI			4	3	7005	384	5.5	274	3.9	195	214	215	624	BEAVERWOOD FARMS INC., NB
GUCANF13882566	BEAVERWOOD BEAVER FLASHY			4	1	7831	333	4.2	267	3.4	220	184	210	614	BEAVERWOOD FARMS INC., NB
GUCANF12936144	COMFORT FARMS MARYLIE	GP	83	4	6	7502	291	3.9	250	3.3	222	170	208	600	COMFORT FARMS LTD, ON
GUCANF12936132	COMFORT FARMS MARCIA	GP	83	4	6	8055	325	4	262	3.2	218	176	198	592	COMFORT FARMS LTD, ON
GUCANF120187906	CRĂMEDITOR TK 7906	G	78	4	2	7144	329	4.6	257	3.6	200	182	202	584	ENTREPRISE FAMILIALE KAISER INC, QC
GUCANF12936161	COMFORT FARMS BROGDON JULIET	VG	85	4	0	6938	310	4.5	252	3.6	191	170	195	556	COMFORT FARMS LTD, ON
GUCANF12936145	COMFORT FARMS JAEGER MELODY	GP	82	4	7	6688	268	4	232	3.5	200	157	195	552	COMFORT FARMS LTD, ON
GUCANF13253902	BEAVERWOOD DAWSONS GIGI			4	2	6247	344	5.5	227	3.6	171	189	175	535	BEAVERWOOD FARMS INC., NB
GU840F3151591459	SPRINGHILL LS QUICKSILVER ET	VG	87	4	8	6362	255	4	213	3.4	182	142	170	494	MORSTAR GUERNSEYS, ON
GUCANF12936150	COMFORT FARMS AELLA	VG	85	4	6	5828	294	5	211	3.6	161	160	164	485	COMFORT FARMS LTD, ON
GUCANF12936143	COMFORT FARMS AUBREE	GP	81	4	7	5180	247	4.8	176	3.4	156	146	149	451	COMFORT FARMS LTD, ON

5 Yr Old		Class	Yr	Mth	M	F	%F	P	%P	M	F	P	Comp BCA	Owner		
GU840F321047717	PRAIRIE MOON LM ADNEY	EX	90	5	9	8969	392	4.4	280	3.1	251	220	220	691	MARLEY FARMS INC, ON	
GUCANF13253881	BEAVERWOOD JAGURARS GRACE		5	9	7811	360	4.6	263	3.4	211	194	200	605	BEAVERWOOD FARMS INC., NB		
GUCANF13253886	BEAVERWOOD JEDIS GWEN		5	6	6722	338	5	250	3.7	180	180	188	548	BEAVERWOOD FARMS INC., NB		
Mature Cow		Class	Yr	Mth	M	F	%F	P	%P	M	F	P	Comp BCA	Owner		
GU840F3012927820	COULEE CREST TOBY LINDSEY ET	GP	81	6	4	10855	526	4.8	375	3.5	316	306	307	929	MARLEY FARMS INC, ON	
GUCANF12292495	MAPLEHURST LIGHTNING LIZZIE		VG	88	7	1	10411	431	4.1	332	3.2	269	226	241	736	MARLEY FARMS INC, ON
GUCANF12792967	BEAVERWOOD LEVI'S EVA			7	6	8503	404	4.8	288	3.4	241	231	229	701	BEAVERWOOD FARMS INC., NB	
GUUSAF97007168	COULEE CREST NET WORTH LENNIE	VG	88	6	3	8545	421	4.9	310	3.6	227	223	231	681	MARLEY FARMS INC, ON	
GUCANF12793003	BEAVERWOOD CORDELL FAITH			6	6	7528	450	6	288	3.8	208	247	223	678	BEAVERWOOD FARMS INC., NB	
GUCANF12292509	RUNNING SPRING LATIMER TILLY		EX	90	6	5	8103	428	5.3	278	3.4	224	235	216	675	MARLEY FARMS INC, ON
GUCANF12793004	BEAVERWOOD LEVI FLOWER			6	6	7826	396	5.1	268	3.4	217	218	208	643	BEAVERWOOD FARMS INC., NB	
GUUSAF97012822	PRAIRIE MOON JW SISSY			6	11	7526	390	5.2	278	3.7	208	215	216	639	MARLEY FARMS INC, ON	
GUCANF13253874	BEAVERWOOD COPPERS FONZIE			6	1	7714	362	4.7	279	3.6	201	190	204	595	BEAVERWOOD FARMS INC., NB	
GUCANF11902359	COMFORT FARMS PHOENIX	GP	80	6	9	6196	308	5	236	3.8	179	177	192	548	COMFORT FARMS LTD, ON	
GUCANF13253869	BEAVERWOOD COPPERS FIREFLY			6	0	6119	325	5.3	239	3.9	163	172	178	513	BEAVERWOOD FARMS INC., NB	
GUCANF12936093	COMFORT FARMS MELANIE LYNN		G	77	6	9	6891	298	4.3	225	3.3	183	159	168	510	COMFORT FARMS LTD, ON
GUUSAF97007133	COULEE CREST NET WORTH LIBBY	VG	85	6	2	5899	336	5.7	228	3.9	153	176	167	496	MARLEY FARMS INC, ON	

Classification Schedule

DECEMBER

EARLY

ON – Wentworth, Brant, Haldimand & Norfolk

QC – Quebec, Montmorency, Portneuf, Richmond, Missisquoi, Vaudreuil & Soulanges, Wolfe

MID

ON – Perth

JANUARY

EARLY

ON – Elgin, Bruce, Grey

QC – Chateauguy, Sherbrooke, Stanstead

MID

ON – Halton, York, Peel, Northumberland, Victoria, Leeds, Grenville, Lanark

QC – Megantic, Lotbiniere

SK

NL, PE, NS, NB [2 Months]

LATE

ON – Huron, Peterborough, Renfrew

QC – Pontiac

AB

Fantastic Results at the GUERNSEY NATIONAL SHOW!

Impressive debut at the Guernsey National Show in Ancaster



🏆 1st Place Spring Heifer Class: HIDDEN LANE WIPEOUT PANSY

GPA: (08/25) -125M/L, +4F/G, +0.14% +3P, +0.09% RPT.17%

TYPE: (08/25)CONF +5(PA)(11% RPT)

LPI/IPV: +1041(PA) RK/RG: 63%

SCS: 99(PA), Inbr.C: 9.66%, R.Val: 17%, Dtr Fert: 98(PA)

PANSY's Dam:

HIDDEN LANE TOBY PARMASAN

GP-82-2YR-CAN



🏆 2nd Winter Heifer Class: MAR-LEY VIKING SECRET

GPA: (08/25) -75M/L, -19F/G, -0.20% -10P, -0.08% RPT.32%

TYPE: (08/25)CONF +5(PA)(22% RPT) GLPI/IPV: +867(PA) RK/RG: 36%

SCS: 104(PA), Inbr.C: 7.35%, R.Val: 16%, Dtr Fert: 99(PA)

SECRET's Dam:

MAPLEHURST LADYSMAN SEASON

GP-83-2YR-CAN



🏆 MTELGIN MCDREAMY TASIA Pregnancies coming!

PA: (08/25) -74M/L, +5F/G, +0.11% +3P, +0.08% RPT.34%

TYPE: (08/25)CONF +4(PA)(22% RPT) GLPI/IPV: +1088(PA) RK/RG: 68%

SCS: 104(PA), Inbr.C: 7.84%, R.Val: 16%, Dtr Fert: 99(PA)

TASIA's Dam:

MAPLEHURST PILOT TREAT

EX 95-4E / 4X National Show Champion

MARLEY FARMS INC.
Marlin Martin
(519)-504-8095

HIDDEN LANE DAIRY INC.
Kyle Horst
(519) 588-8229

DARCROFT FARMS
Paul & Kyle MacLeod
(519) 320-0728

2025 Guernsey Recap



2025 Guernsey Recap



Guernsey News

2026 SCHEDULE

May	Newsletter (submissions due by April 1)
August	Newsletter (submissions due by July 15)
December	Newsletter (submissions due by November 15)

We are always looking for advertisement submissions for our Guernsey News! **New discounted rates for advertisement frequency in multiple newsletters.**

If you could please provide any advertisements in the below format: Wording for art work specs i.e. design specs – CMYK at 300 ppi in PDF format. We encourage you to submit Camera ready / Completed ads to take advantage of an additional 25% discount.

If you need help putting an advertisement together kindly reach out to Emilie Wallace, and we can look into this on a case by case basis for costs to do ad layout.

SIZE	FREQUENCY 1 Member/Non-Member Rate	FREQUENCY 2 Member/Non-Member Rate (Discount of 15% for 2 ads)	FREQUENCY 3 Member/Non-Member Rate (Discount of 25% for 2 ads)
FULL PAGE 8.5" x 11" <i>with 0.25" bleed</i>	\$240.00 / \$420.00 PER ISSUE	\$200.00 / \$360.00 PER ISSUE	\$180.00 / \$315.00 PER ISSUE
1/2 PAGE 8.5" x 5.5" <i>with 0.25" bleed</i>	\$150.00 / \$240.00 PER ISSUE	\$130.00 / \$200.00 PER ISSUE	\$110.00 / \$180.00 PER ISSUE
1/3 PAGE 8.5" x 3.67" <i>with 0.25" bleed</i>	\$120.00 / \$180.00 PER ISSUE	\$105.00 / \$150.00 PER ISSUE	\$90.00 / \$135.00 PER ISSUE
1/4 PAGE 5.5" x 4.25" <i>with 0.25" bleed</i>	\$100.00 / \$150.00 PER ISSUE	\$85.00 / \$130.00 PER ISSUE	\$75.00 / \$110.00 PER ISSUE

Camera-ready Ads: ADDITIONAL 25% discount